

Keep With Operator's Manual

BACKHOE SUBFRAME KIT 75C, 85C, & 95C BACKHOES KIOTI DK75 & DK90 TRACTORS

Reference to right, left, front and back refers to operator seated in tractor seat in normal operating position.

NOTE: Leave all attaching hardware loose until mounting kit is completely assembled to facilitate assembly and proper alignment unless otherwise instructed. Tighten all hardware to torque specifications in operator's manual.

TRACTOR PREPARATION

1. Remove drawbar from tractor hitch bracket.
2. Remove tractor hitch bracket from tractor.

INSTALLING MOUNTING BRACKETS (Figure 2)

1. Replace hitch bracket removed in Tractor Preparation step 2 above with rear backhoe mounting bracket (2) using hardware removed from original hitch bracket.

NOTE: Tractor drawbar can be installed into rear backhoe mounting bracket (1) when backhoe is not being used only. Do not install when using backhoe.

2. Remove covers from beneath fuel tank. Support fuel tank and remove hardware securing front and rear support from underside of tractor. Install front mounting bracket (1) onto bottom side of tractor using 14mm x 120mm cap screws (5), 9/16" flat washers (6), and 9/16" lock washers (7).

NOTE: Keep covers to reinstall in event backhoe mounts are removed.

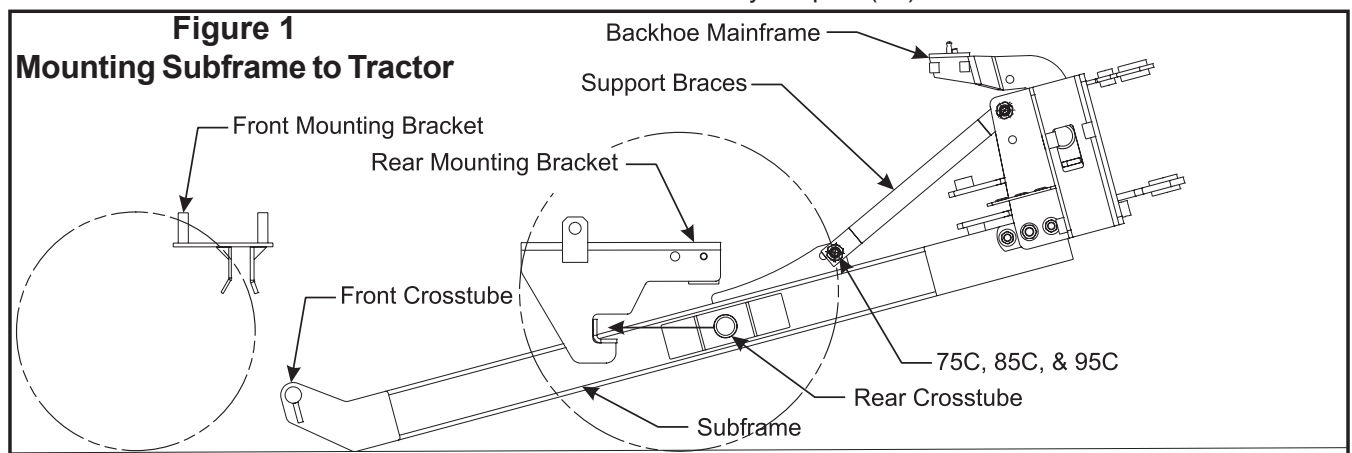
INSTALLING SUBFRAME

1. Install subframe assembly to backhoe mainframe using 3/4 x 4" cap screws (9) and 3/4" Spiral Lock nuts (12) in front and rear holes. Use 7/8 x 4-1/2" cap screws (10) and 7/8" Spiral Lock nuts (13) in middle holes.
2. Install support braces (4) onto subframe using 3/4 x 2-3/4" cap screws (8) and 3/4" lock nuts (11) in rear holes of attachment lug on subframe (3) and top holes on backhoe mainframe. (See figure 1)

NOTE: Double nut cap screw (items 8) after torquing first nut to 350 ft.-lbs.

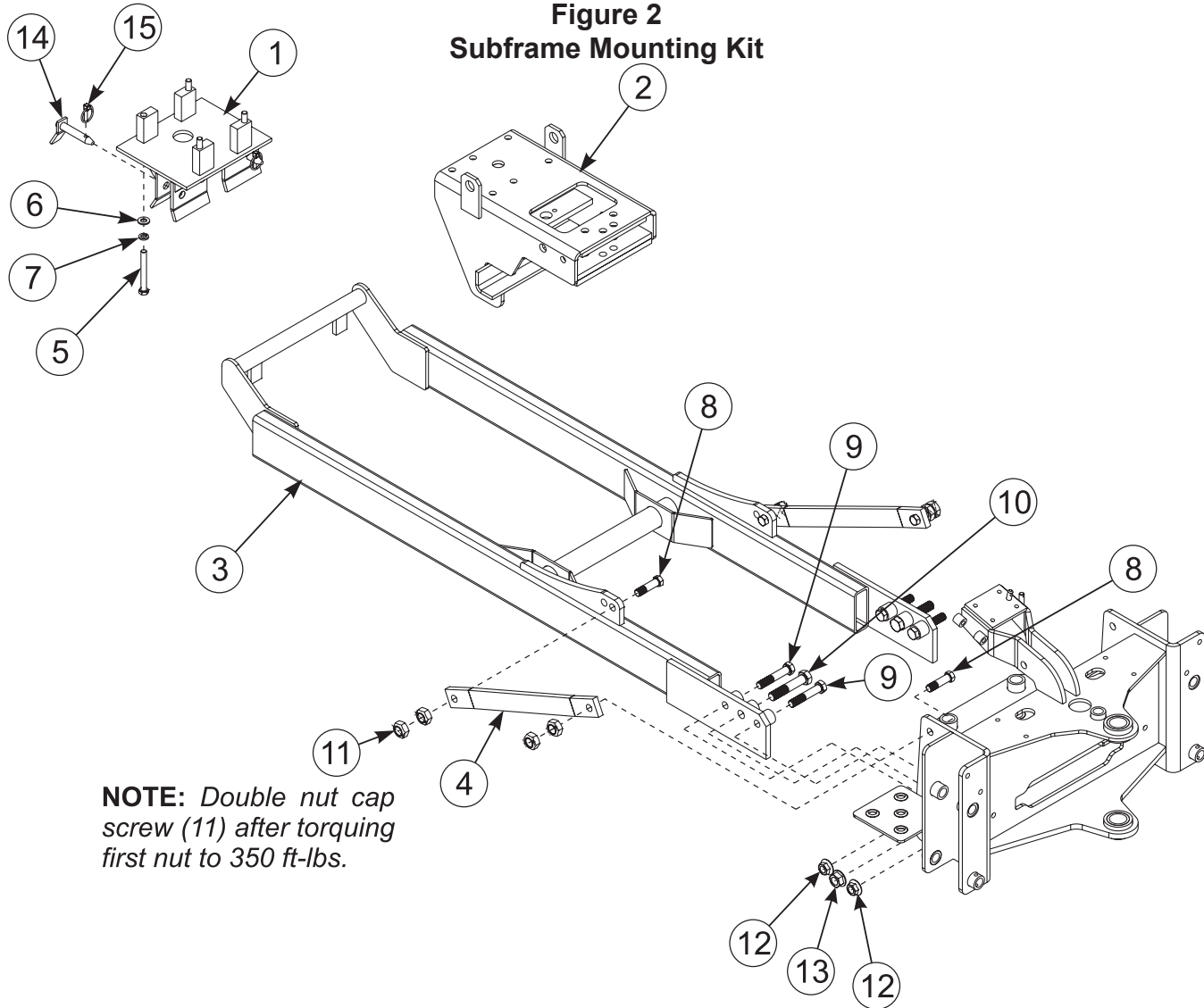
MOUNTING BACKHOE TO TRACTOR

1. Back tractor over subframe close enough to connect to backhoe hydraulic system.
2. Using backhoe hydraulic controls, extend stabilizer cylinders and boom cylinder until rear crosstube of subframe (3) is level with rear mounting bracket (2) and front of subframe is on ground (Figure 1).
3. Slowly back tractor until rear crosstube of subframe (3) is seated in rear mounting bracket (2).
4. Retract boom cylinder and stabilizer cylinders so front of subframe swings up until front crosstube of subframe (3) is seated in front mounting bracket (1) (See figure 1).
5. Secure front crosstube in place using pins (14) and lynch pins (15).



2-7735

**Figure 2
Subframe Mounting Kit**



NOTE: Double nut cap screw (11) after torquing first nut to 350 ft-lbs.

PARTS LIST — SUBFRAME MOUNTING KIT — 2-7155

Item	Part No.	Description	Qty.
1	55899	BRACKET, Front Hanger	1
2	55906	BRACKET, Rear Hanger	1
3	55913	SUBFRAME	1
4	53885	BRACES, Support	2
5	42672-105	HHCS, M14-1.50 X 120 MM CL 8.8 TCP	4
6	42502-11	WASHER, Flat 9/16	4
7	41837-6	WASHER, Lock 9/16	4
8	42969-4	HHCS, 3/4-10 X 2.75 GR8	4
9	41838-71	HHCS, 3/4-10 X 4.00 GR5	4
10	41838-102	HHCS, 7/8-9 X 4.50 GR5	2
11	47264-8	NUT, LOCK 3/4-10	8
12	54591-1	NUT, Spiral Lock 3/4-10	4
13	54591-2	NUT, Spiral Lock 7/8-9	2
14	44892	PIN, Assembly	2
15	44756-1	PIN, Lynch	2

INSTALLATION INSTRUCTIONS