

Keep With Operator's Manual

BACKHOE SUBFRAME KIT KIOTI TRACTORS

BACKHOE	TRACTOR	LOADER
75C, 85C	DK35SE HST	2408TL, KL351
75C, 85C, 95C	DK40SE HST, DK45SE HST	2409TL, KL401

Subframe can be installed on tractor and backhoe using tools ordinarily available. Tractor must be equipped with loader to install subframe.

INSTALLING SUBFRAME TO BACKHOE (Figures 1 & 2)

1. Install subframe (1) to backhoe using 3/4" x 4" cap screws (12) with 3/4" SPIRALOCK nuts (17) in rear holes, 3/4" x 3-1/2" cap screws (13) with 3/4" SPIRALOCK nuts (17) in front holes, and 7/8" x 4" cap screws (15) with 7/8" SPIRALOCK nuts (18) in middle holes.
2. Fasten support braces (4) to inside of subframe and outside of backhoe mainframe using 3/4" x 2-3/4" cap screws (14) with 3/4" lock nuts (16). Then, install double nut (16). (Torque to 350 ft-lbs).

TRACTOR PREPARATION

1. Remove drawbar from tractor hitch bracket.
2. Disassemble the PTO shield from the PTO shield bracket. Remove tractor hitch bracket from tractor, along with PTO shield bracket. Retain nuts and lock washers from studs.
3. Raise the 3-point hitch to its highest point and make sure that the arms are at their widest position.

INSTALLING MOUNTING BRACKETS (Figures 1 & 2)

1. Install front mounting bracket (3) to underside of transmission casting using 12mm x 25mm cap screws (9) and 1/2" lock washers (11).

2. Install rear mounting bracket (2) to rear underside of tractor using 14mm x 35mm cap screws (7) and 9/16" lock washers (10). Reuse nuts and lock washers removed from studs along with 12mm x 35mm cap screws (8) and 1/2" lock washers (11) to secure rear mounting bracket (2) and PTO shield bracket to back side of tractor.
3. Re-install the PTO bracket to the PTO shield.

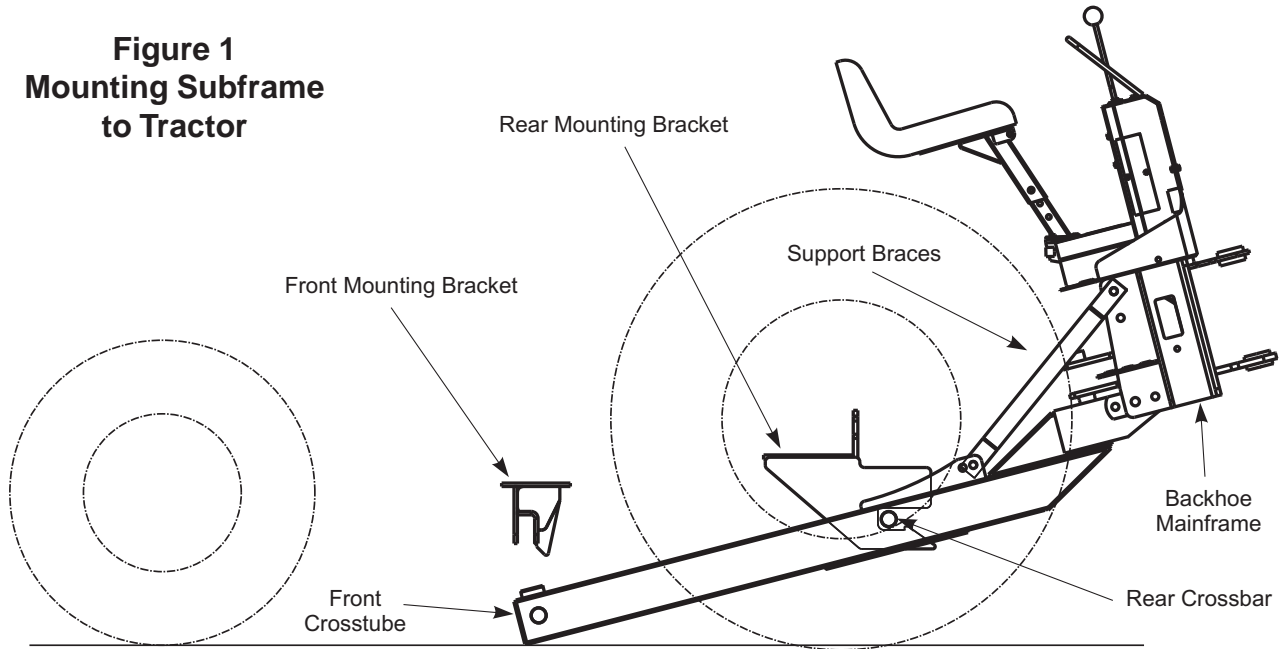
MOUNTING BACKHOE TO TRACTOR (Figure 1)

1. Back tractor slowly towards the backhoe, centered over the subframe assembly, until the hydraulic hoses can be connected to the tractor.
2. Connect hoses to tractor rear remote hydraulic valves.
3. With the tractor PTO and transmission in neutral, and the tractor running at idle speed, use the backhoe controls to position the backhoe.

NOTE: Use care in the procedure to avoid being trapped between tractor and backhoe or between backhoe parts.

4. Using backhoe hydraulic controls, extend bucket and lower stabilizers to provide a base for raising the subframe. Using backhoe controls, raise subframe until the rear crosstube is level with the rear mounting bracket (2) and the front of the subframe is on the ground.
5. Back tractor and position subframe so the rear crosstube engages pocket in rear mounting bracket (2).
6. Lower backhoe slowly to engage front crosstube into front mounting bracket (3).
7. Install 3/4" pins (5) and Linch pins (6).

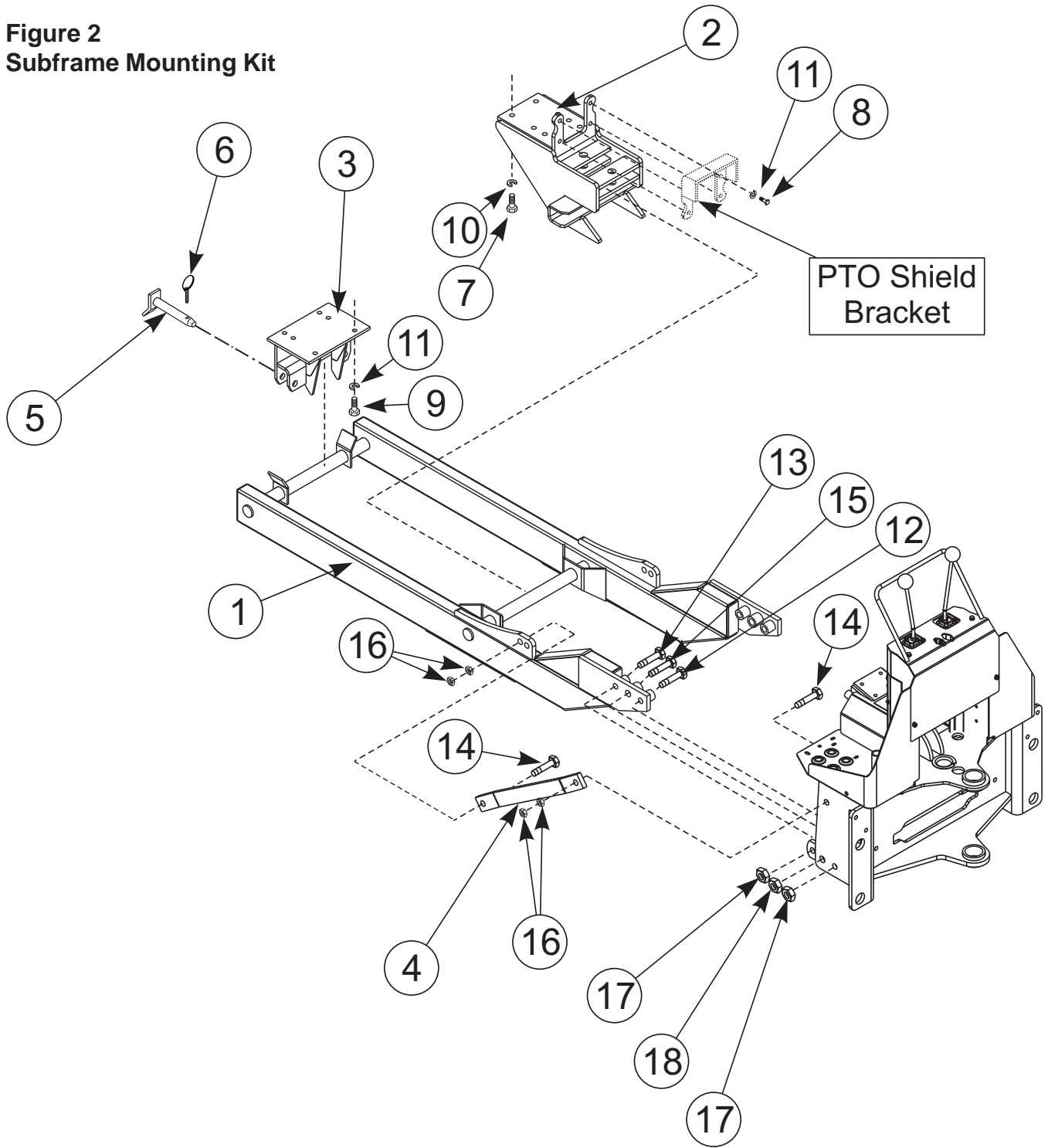
Figure 1
Mounting Subframe
to Tractor



PARTS LIST - BACKHOE SUBFRAME KIT

Item	Part No.	Description	Qty.
1	54833	SUBFRAME, Backhoe	1
2	54844	BRACKET, Hanger, Rear	1
3	54848	BRACKET, Hanger, Front	1
4	54882	BAR, Backhoe Support Brace	2
5	44892	PIN, Hitch, 3/4" Dia. X 4-13/16" Long	2
6	44756-1	PIN, Linch, 5/16" Dia x 1-5/8" Long	2
7	49040-18	SCREW, Cap, 14mm-1.5 x 35mm Class 10.9	6
8	49040-17	SCREW, Cap, 12mm-1.25 x 35mm Class 10.9	2
9	49040-44	SCREW, Cap, 12mm-1.25 X 25mm Class 10.9	6
10	41837-6	WASHER, Lock, 9/16	6
11	41837-5	WASHER, Lock, 1/2	8
12	41838-71	SCREW, Cap, 3/4-10 X 4" Grade 5	2
13	41838-43	SCREW, Cap, 3/4-10 X 3-1/2" Grade 5	2
14	42969-4	SCREW, Cap, 3/4-10 X 2-3/4" Grade 8	4
15	41838-46	SCREW, Cap, 7/8-9 X 4" Grade 5	2
16	47264-8	NUT, Lock, 3/4-10, Grade C	8
17	54591-1	NUT, Hex Flange- SPIRALOCK, 3/4-10	4
18	54591-2	NUT, Hex Flange- SPIRALOCK, 7/8-9	2

Figure 2
Subframe Mounting Kit



GENERAL TORQUE SPECIFICATIONS

USE THE FOLLOWING TORQUES WHEN SPECIAL TORQUES ARE NOT GIVEN

Standard American and Metric Cap Screws

AMERICAN STANDARD CAP SCREWS									METRIC CAP SCREWS								
SAE Grade	5				8				Metric Class	8.8				10.9			
Typ. Head Markings									Typ. Head Markings								
Cap Screw	TORQUE				TORQUE				Cap Screw	TORQUE				TORQUE			
Size	FT-LBS		N-m		FT-LBS		N-m		Size	FT-LBS		N-m		FT-LBS		N-m	
Inches	MIN	MAX	MIN	MAX	MIN	MAX	MIN	MAX	Millimeters	MIN	MAX	MIN	MAX	MIN	MAX	MIN	MAX
1/4 - 20	6.25	7.25	8.5	10	8.25	9.5	11	13	M6 x 1.00	6	8	8	11	9	11	12	15
1/4 - 28	8	9	11	12	10.5	12	14	16	M8 x 1.25	16	20	21.5	27	23	27	31	36.5
5/16 - 18	14	15	19	20	18.5	20	25	27	M10 x 1.50	29	35	39	47	42	52	57	70
5/16 - 24	17.5	19	23	26	23	25	31	34	M12 x 1.75	52	62	70	84	75	91	102	123
3/8 - 16	26	28	35	38	35	37	47.5	50	M14 x 2.00	85	103	115	139	120	146	163	198
3/8 - 24	31	34	42	46	41	45	55.5	61	M16 x 2.50	130	158	176	214	176	216	238	293
7/16 - 14	41	45	55.5	61	55	60	74.5	81	M18 x 2.50	172	210	233	284	240	294	325	398
7/16 - 20	51	55	69	74.5	68	75	92	102	M20 x 2.50	247	301	335	408	343	426	465	577
1/2 - 13	65	72	88	97.5	86	96	116	130	M22 x 2.50	332	404	450	547	472	576	639	780
1/2 - 20	76	84	103	114	102	112	138	152	M24 x 3.00	423	517	573	700	599	732	812	992
9/16 - 12	95	105	129	142	127	140	172	190	M27 x 3.00	637	779	863	1055	898	1098	1217	1488
9/16 - 18	111	123	150	167	148	164	200	222	M30 x 3.00	872	1066	1181	1444	1224	1496	1658	2027
5/8 - 11	126	139	171	188	168	185	228	251	<p>NOTE: These values apply to fasteners as received from supplier, dry or when lubricated with normal engine oil. They do not apply if special graphite or moly sulphide greases or other extreme lubricants are used.</p>								
5/8 - 18	152	168	206	228	203	224	275	304									
3/4 - 10	238	262	322	355	318	350	431	474									
3/4 - 16	274	305	371	409	365	402	495	544									
7/8 - 9	350	386	474	523	466	515	631	698									
7/8 - 14	407	448	551	607	543	597	736	809									
1 - 8	537	592	728	802	716	790	970	1070									
1 - 14	670	740	908	1003	894	987	1211	1337									

INSTALLATION INSTRUCTIONS