

Keep With Operator's Manual

## BACKHOE SUBFRAME KIT NEW HOLLAND OR CASE IH TRACTORS

MODEL	BACKHOE	TRACTOR	LOADER
NEW HOLLAND	756C, 757C, 758C	1320, 1520, 1620, 1715, 1530, 1630, 1725, & 1925 TC25, TC29, TC29D, TC29DA, TC30, TC33, TC33D & TC33DA	14LA, 15LA, 7308
CASE IH	BHX172, BH90 BH102	D35, DX35, D40, DX40, D45, DX45, FARMALL 31, 35	L130 LX114

Subframe can be installed on tractor and backhoe using tools ordinarily available. Tractor must be equipped with loader, front blade, or equivalent front counter weight.

Complete backhoe installation requires hydraulic kit 716397016 (2-7238) or 715396026 (2-7635). Install hydraulic kit to tractor before installing backhoe to tractor. If using optional rear remote hose kit or PTO pump kit, install kit to backhoe before installing backhoe onto tractor.

**NOTE:** This subframe is not compatible with 914A or MWX mowers or standard clevis hitch on TC30 or 1715. You must order SBA370020610 swinging drawbar kit or SBA370020970 extension drawbar kit to replace clevis hitch.

### INSTALLING SUBFRAME TO BACKHOE (Figures 2 & 3)

1. Install subframe (1) to backhoe using 3/4 x 3 cap screws (15) and 3/4 lock nuts (14) in front holes and 7/8 x 3-1/2 cap screws (16), 7/8 lock washers (17) and 7/8 hex nuts (18) in rear holes.
2. Fasten support braces (9) to outside of subframe and inside of backhoe frame using 3/4 x 2 cap screws (11) and 3/4 lock nuts (14) (Torque to 350 ft lbs).

### INSTALLING MOUNTING BRACKET

1. Remove 16mm cap screws which secure hitch to underside of tractor.

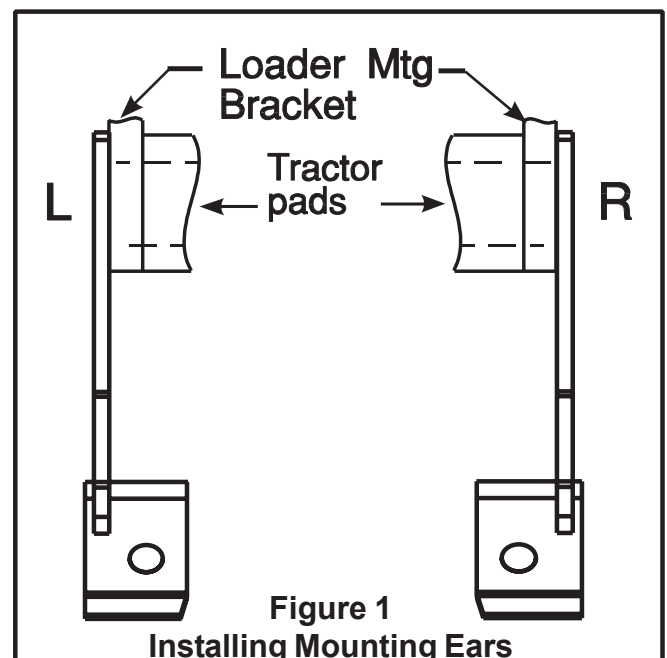
**NOTE:** It may be necessary to support hitch assembly when 16mm cap screws are removed.

**NOTE:** For 756C or BHX172 backhoe, use front set of mounting holes for braces.

2. Install side supports (2) to rear mounting bracket (3) using 1/2 x 1-1/2 cap screws (20) and 1/2 lock nuts (21). Leave hardware loose. Attach side supports to axle housing using 12mm x 30mm cap screws (19) and 1/2 lock washers (22).

**NOTE:** If tractor is equipped with fabricated (welded, non-cast steel) swinging drawbar hitch bracket, install spacers (24), except 1725 & 1925 tractors. It may be necessary to locate drawbar to shortest position to clear backhoe swing cylinders (see Figure 3 on page 4).

3. Install mounting bracket (3) in rear mounting holes using 16mm x 50mm cap screws and original lock washers and front mounting holes using 16mm x 100mm cap screws and original lock washers.
4. Remove two rear cap screws which secure loader mid mounting brackets to tractor.
5. Install mounting ears (5 & 13) on outside of loader mounts, to rear most bolt holes in clutch housing using 16mm x 70mm cap screws (5) and 5/8 lock washers (22). Torque all bolts to specifications in general torque specifications table.
6. Reinstall clevis pins for swinging drawbar with split rings on top.

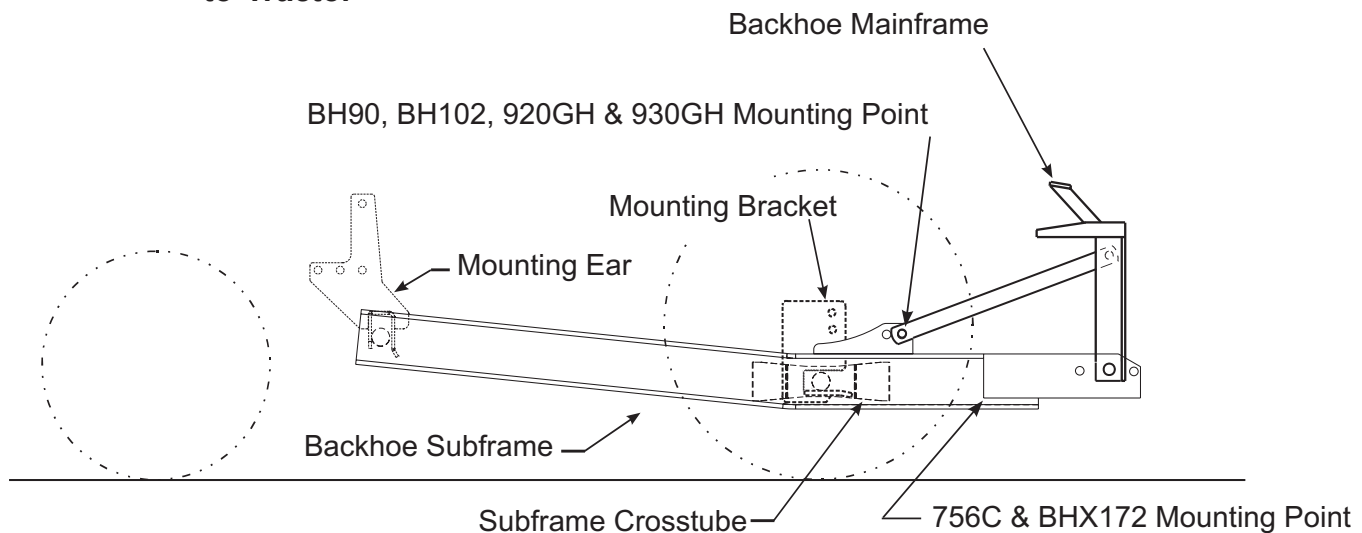


**Figure 1  
Installing Mounting Ears**

**MOUNTING BACKHOE TO TRACTOR (Figure 3)**

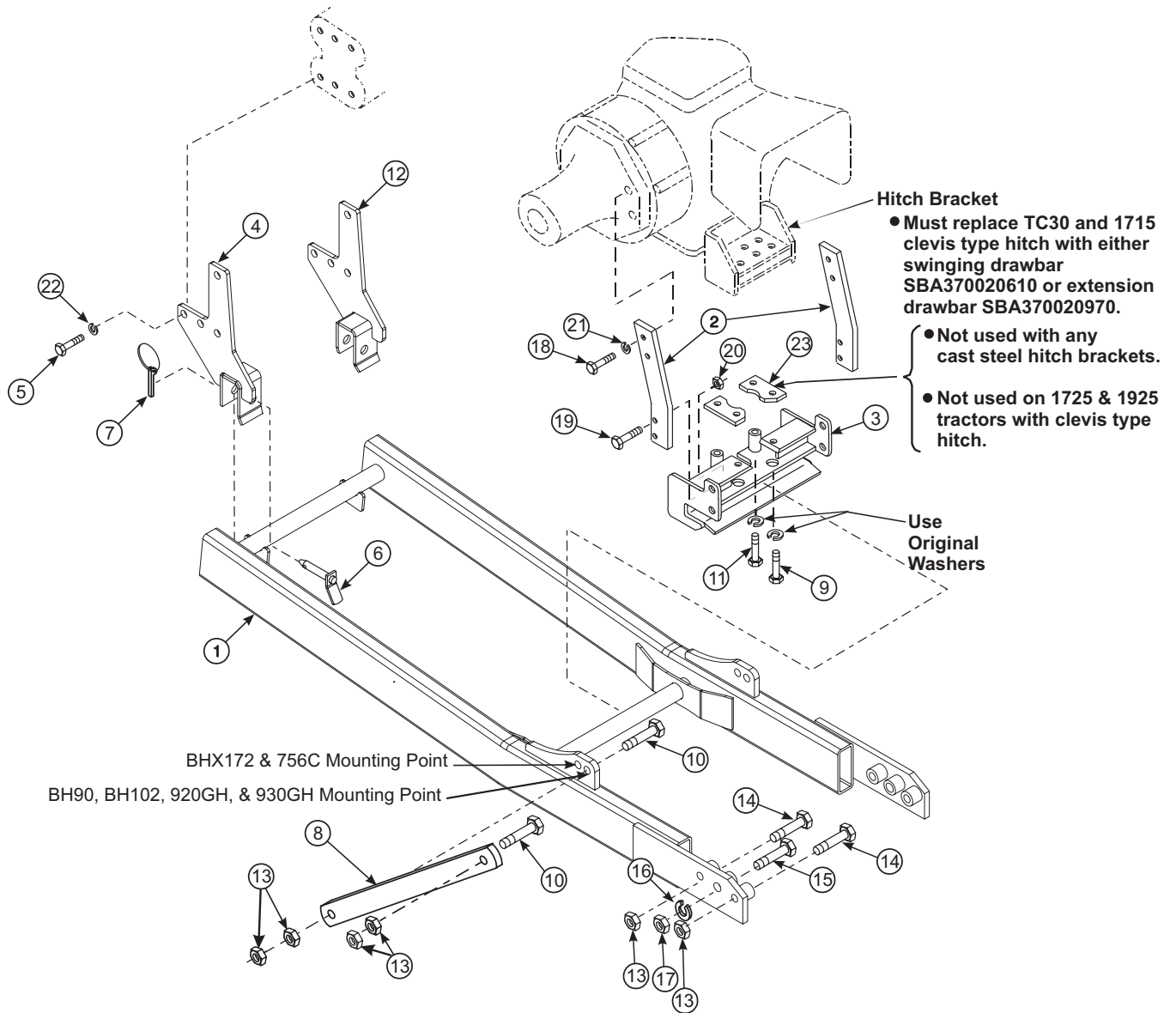
1. Back tractor slowly toward backhoe, parallel to subframe assembly, until hoses can be connected to tractor. Adjust 3-point lift arms to level position. Shut off tractor engine.
2. Connect hoses to tractor hydraulics. Make sure connections are complete at couplers.
3. Using backhoe controls, extend dipperstick and lower stabilizers and bucket to ground to provide a base for raising subframe. Using backhoe controls, raise subframe to proper height to connect to tractor.
4. Position 3-point hitch arms inside subframe support braces.
5. Back tractor and position subframe so cross tube engages pocket in rear mounting bracket (3) and holes in front of subframe align with front mounting ears (5 & 13). Install 3/4 pins (7) and lynch pins (8).

**Figure 2**  
**Mounting Subframe**  
**to Tractor**

**PARTS LIST - SUBFRAME KIT**

ITEM	PART NO.	DESCRIPTION	QTY.
1	53914	SUBFRAME	1
2	44941	FLAT, SUPPORT	2
3	54404	BRACKET, MOUNTING	1
4	53903	EAR, MOUNTING - LEFT	1
5	42672-41	HHCS, M16-2.0MM X 70MM	8
6	44892	PIN	2
7	44756-1	LYNCH PIN	2
8	53885	MOUNT BAR	2
9	42672-12	HHCS, M16-2.0MM X 50MM CL 8.8	2
10	42969-19	HHCS, 3/4-10 X 4.00 GR 8	4
11	42672-22	HHCS, M16-2.0MM X 130MM CL 8.8	2
12	53904	EAR, MOUNTING - RIGHT	1
13	47264-8	3/4-10 LOCK NUT	10
14	41838-71	HHCS, 3/4-10 X 4 GR 5	4
15	41838-102	HHCS, 7/8-9 X 4 1/2 GR 5	2
16	41837-9	7/8" LOCK WASHER	2
17	41840-9	7/9-9 LOCK NUT	2
18	42672-19	HHCS, M12-1.75MM X 30MM CL 8.8	4
19	41838-33	HHCS, 1/2-13 X 1 1/2 GR 5	4
20	41840-5	NUT, Lock 1/2-13	4
21	41837-5	WASHER, Lock 1/2"	4
22	41837-7	WASHER, Lock 5/8"	8
23	44950	SPACER	2





**Figure 3  
Subframe Assembly  
with Loader**



**GENERAL TORQUE SPECIFICATIONS**

USE THE FOLLOWING TORQUES WHEN SPECIAL TORQUES ARE NOT GIVEN

**Standard American and Metric Cap Screws**

AMERICAN STANDARD CAP SCREWS									METRIC CAP SCREWS								
SAE Grade	5				8				Metric Class	8.8				10.9			
Typ. Head Markings									Typ. Head Markings								
Cap Screw	TORQUE				TORQUE				Cap Screw	TORQUE				TORQUE			
Size	FT·LBS		N·m		FT·LBS		N·m		Size	FT·LBS		N·m		FT·LBS		N·m	
Inches	MIN	MAX	MIN	MAX	MIN	MAX	MIN	MAX	Millimeters	MIN	MAX	MIN	MAX	MIN	MAX	MIN	MAX
1/4 - 20	6.25	7.25	8.5	10	8.25	9.5	11	13	M6 x 1.00	6	8	8	11	9	11	12	15
1/4 - 28	8	9	11	12	10.5	12	14	16	M8 x 1.25	16	20	21.5	27	23	27	31	36.5
5/16 - 18	14	15	19	20	18.5	20	25	27	M10 x 1.50	29	35	39	47	42	52	57	70
5/16 - 24	17.5	19	23	26	23	25	31	34	M12 x 1.75	52	62	70	84	75	91	102	123
3/8 - 16	26	28	35	38	35	37	47.5	50	M14 x 2.00	85	103	115	139	120	146	163	198
3/8 - 24	31	34	42	46	41	45	55.5	61	M16 x 2.50	130	158	176	214	176	216	238	293
7/16 - 14	41	45	55.5	61	55	60	74.5	81	M18 x 2.50	172	210	233	284	240	294	325	398
7/16 - 20	51	55	69	74.5	68	75	92	102	M20 x 2.50	247	301	335	408	343	426	465	577
1/2 - 13	65	72	88	97.5	86	96	116	130	M22 x 2.50	332	404	450	547	472	576	639	780
1/2 - 20	76	84	103	114	102	112	138	152	M24 x 3.00	423	517	573	700	599	732	812	992
9/16 - 12	95	105	129	142	127	140	172	190	M27 x 3.00	637	779	863	1055	898	1098	1217	1488
9/16 - 18	111	123	150	167	148	164	200	222	M30 x 3.00	872	1066	1181	1444	1224	1496	1658	2027
5/8 - 11	126	139	171	188	168	185	228	251	<b>NOTE:</b> These values apply to fasteners as received from supplier, dry or when lubricated with normal engine oil. They do not apply if special graphite or moly sulphide greases or other extreme lubricants are used.								
5/8 - 18	152	168	206	228	203	224	275	304									
3/4 - 10	238	262	322	355	318	350	431	474									
3/4 - 16	274	305	371	409	365	402	495	544									
7/8 - 9	350	386	474	523	466	515	631	698									
7/8 - 14	407	448	551	607	543	597	736	809									
1 - 8	537	592	728	802	716	790	970	1070									
1 - 14	670	740	908	1003	894	987	1211	1337									

# INSTALLATION INSTRUCTIONS