

Keep With Operator's Manual

SMC CB BACKHOE CAT. I THREE POINT ADAPTER KIT

Three point adapter kit can be installed using tools ordinarily available.

INSTALLING THREE POINT ADAPTER (Figure 3)

1. Install link pins (6) to backhoe using 7/8" lock washers (13) and 7/8" nuts (14). Link pins need to be installed in the middle of the three holes.
2. Join upper link (1) and center link (2) using 3/4" x 2-3/4" cap screws (8) and 3/4" lock nuts (10). Leave a minimum of 3-3/4" inches between bolts.

NOTE: Leave hardware loose. Assembly may need to be lengthened or shortened to mount backhoe mainframe in vertical position.

3. Install link assembly to backhoe mainframe using clevis pin (11) and hair pin cotter (12).
4. Fasten support braces (3 & 4) to backhoe using 3/4" x 4" cap screws (19) and 3/4" lock nuts (10) and to link assembly using 3/4" x 4-1/2" cap screw (7), bushing (5) and 3/4" lock nut (10).

NOTE: Bottom end of support braces are mounted to inside of backhoe mainframe. Top end of support braces must be fastened within 6-3/4" inches of link point that fastens to tractor.

MOUNTING BACKHOE TO TRACTOR

1. Back tractor close enough to backhoe to connect hose kit or pump to tractor.
2. Using backhoe hydraulics, lower stabilizers until backhoe can be connected to 3-point hitch. Bottom of backhoe boom pivot should be 8 to 12 inches off ground when attaching to tractor lower 3-point arms.
3. Connect lower 3-point hitch members to backhoe and secure using lynch pins from 3-point hitch.
4. Connect link assembly to upper connecting point on 3-point hitch using clevis pin and lynch pin from 3-point hitch.

NOTE: Insert adapter tube (15) in end of link assembly if necessary to adapt to smaller 3-point connecting pin.

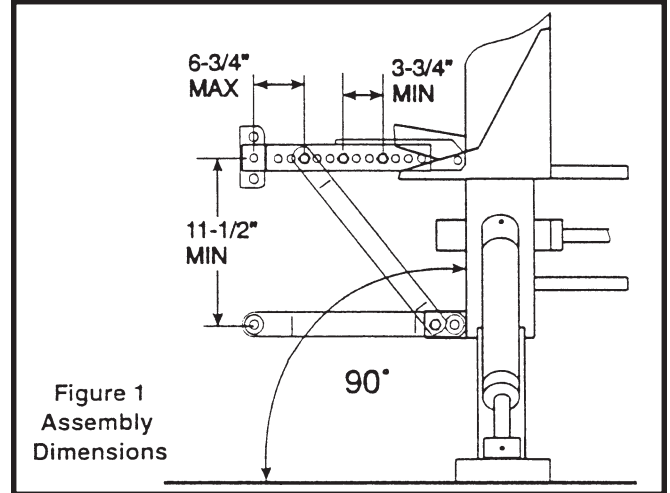


Figure 1
Assembly
Dimensions

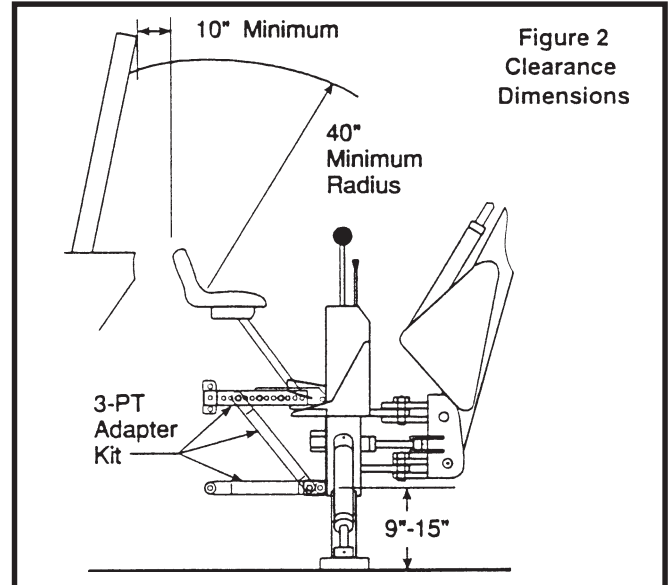


Figure 2
Clearance
Dimensions

5. Adjust link assembly length if necessary for backhoe mainframe to rest in vertical position.

NOTE: Adjustment limitations are shown in Figure 1.

6. Check for proper operator head clearance with ROPS and cab (Figure 2).
7. Tighten all hardware in link assembly to torque specifications in backhoe manual.



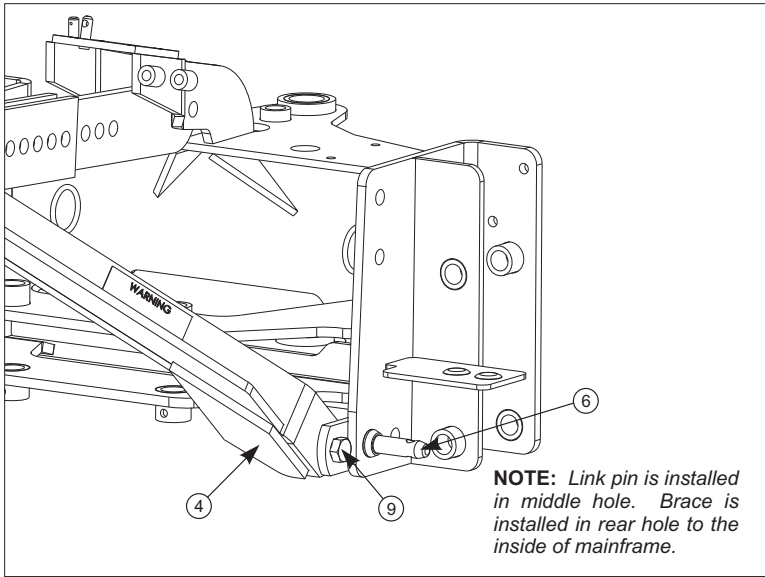
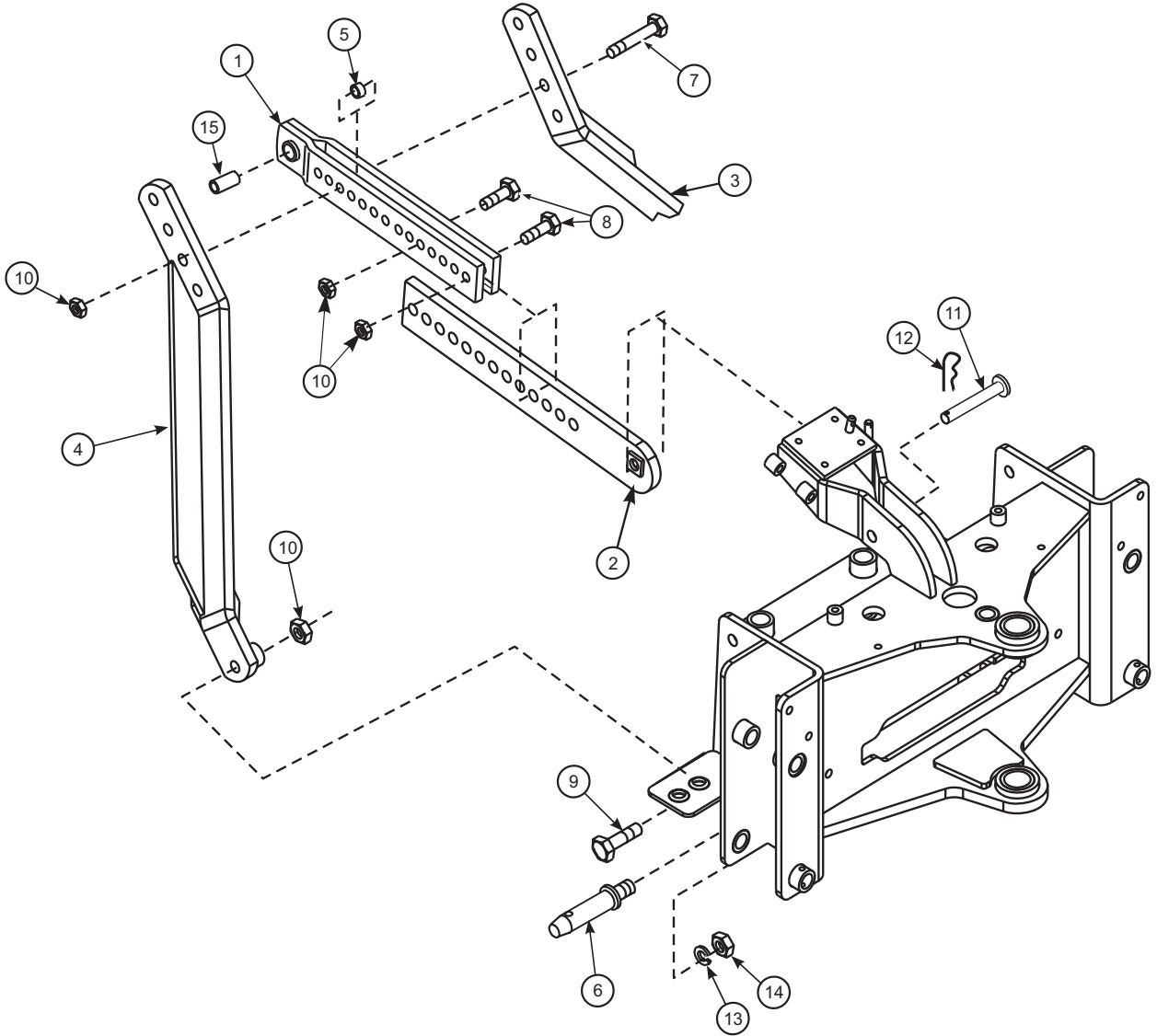
WARNING: Escaping hydraulic fluid under pressure can penetrate skin causing serious injury.

- **DO NOT** use your hands to check for leaks. Use a piece of cardboard or paper to search for leaks.
- Stop engine and relieve pressure before connecting or disconnecting lines.
- Tighten all connections before starting engine or pressurizing lines.

If any fluid is injected into skin, obtain medical attention immediately or gangrene may result.

PARTS LIST - MOUNTING KIT

ITEM	PART NO.	DESCRIPTION	QTY.
1	54350	WDMT, Upper Link	1
2	54352	WDMT, Center Link	1
3	54359	BRACE, Left w/ Decals	1
4	54360	BRACE, Right w/ Decals	1
5	15281	BUSHING	1
6	ARP13479	PIN, Link	2
7	41838-51	SCREW, Cap 3/4 - 10 x 4-1/2 GR5	1
8	41838-42	SCREW, Cap 3/4 - 10 x 2-3/4 GR5	2
9	41838-71	SCREW, Cap 3/4 - 10 x 4 GR5	2
10	54591-1	NUT, 3/4 - 10 Flange Spiral Lock	5
11	41902-16	PIN, Clevis 3/4 x 3 HT	1
12	41903-18	PIN, COTTER 5/32 x 1-1/2	1
13	41837-9	WASHER, LOCK 7/8	2
14	41836-19	NUT, HEX 7/8 - 14	2
15	44926-1	TUBE	1







NOTE: Link pin is installed in middle hole. Brace is installed in rear hole to the inside of mainframe.

Figure 3
3-Point Link Assembly

GENERAL TORQUE SPECIFICATIONS

USE THE FOLLOWING TORQUES WHEN SPECIAL TORQUES ARE NOT GIVEN

Standard American and Metric Cap Screws

AMERICAN STANDARD CAP SCREWS									METRIC CAP SCREWS								
SAE Grade	5				8				Metric Class	8.8				10.9			
Typ. Head Markings									Typ. Head Markings								
Cap Screw	TORQUE				TORQUE				Cap Screw	TORQUE				TORQUE			
Size	FT·LBS		N·m		FT·LBS		N·m		Size	FT·LBS		N·m		FT·LBS		N·m	
Inches	MIN	MAX	MIN	MAX	MIN	MAX	MIN	MAX	Millimeters	MIN	MAX	MIN	MAX	MIN	MAX	MIN	MAX
1/4 - 20	6.25	7.25	8.5	10	8.25	9.5	11	13	M6 x 1.00	6	8	8	11	9	11	12	15
1/4 - 28	8	9	11	12	10.5	12	14	16	M8 x 1.25	16	20	21.5	27	23	27	31	36.5
5/16 - 18	14	15	19	20	18.5	20	25	27	M10 x 1.50	29	35	39	47	42	52	57	70
5/16 - 24	17.5	19	23	26	23	25	31	34	M12 x 1.75	52	62	70	84	75	91	102	123
3/8 - 16	26	28	35	38	35	37	47.5	50	M14 x 2.00	85	103	115	139	120	146	163	198
3/8 - 24	31	34	42	46	41	45	55.5	61	M16 x 2.50	130	158	176	214	176	216	238	293
7/16 - 14	41	45	55.5	61	55	60	74.5	81	M18 x 2.50	172	210	233	284	240	294	325	398
7/16 - 20	51	55	69	74.5	68	75	92	102	M20 x 2.50	247	301	335	408	343	426	465	577
1/2 - 13	65	72	88	97.5	86	96	116	130	M22 x 2.50	332	404	450	547	472	576	639	780
1/2 - 20	76	84	103	114	102	112	138	152	M24 x 3.00	423	517	573	700	599	732	812	992
9/16 - 12	95	105	129	142	127	140	172	190	M27 x 3.00	637	779	863	1055	898	1098	1217	1488
9/16 - 18	111	123	150	167	148	164	200	222	M30 x 3.00	872	1066	1181	1444	1224	1496	1658	2027
5/8 - 11	126	139	171	188	168	185	228	251	<p>NOTE: These values apply to fasteners as received from supplier, dry or when lubricated with normal engine oil. They do not apply if special graphite or moly sulphide greases or other extreme lubricants are used.</p>								
5/8 - 18	152	168	206	228	203	224	275	304									
3/4 - 10	238	262	322	355	318	350	431	474									
3/4 - 16	274	305	371	409	365	402	495	544									
7/8 - 9	350	386	474	523	466	515	631	698									
7/8 - 14	407	448	551	607	543	597	736	809									
1 - 8	537	592	728	802	716	790	970	1070									
1 - 14	670	740	908	1003	894	987	1211	1337									

INSTALLATION INSTRUCTIONS