

Keep With Loader Operator's Manual

## SMC 2409 LOADER MOUNTING KIT INSTRUCTIONS MASSEY FERGUSON TRACTORS

MODEL	2WD	4WD	LESS CAB	WITH CAB
231S	x		x	

Mounting brackets can be installed using tools ordinarily available. Shut off tractor engine and engage tractor brakes during installation.

After loader is installed, check to be sure front tires clear loader and mounting brackets in all possible positions.

If so equipped, remove weight bracket from front of tractor.

On MF231S it is necessary to relocate the power steering lines on the right side of tractor to make clearance for the right mounting bracket (3). Remove bolt securing oil lines to bracket. Remove bolts securing bracket that the oil lines were secured to. Remove bracket and reinstall bolts into tractor casting. Rotate bracket 180° so that oil lines' new location is toward front of tractor. Remove the next bolt higher than top of original bracket location and attach bracket. Loosen oil lines at tee and rotate up until they can be reattached to the bracket. Fasten oil lines to bracket and retighten oil lines.

**NOTE:** Leave all attaching hardware loose until mounting brackets are completely assembled to facilitate assembly and proper alignment. Tighten all hardware to torque specifications in loader operators manual.

### INSTALLING MOUNTING BRACKETS (Figure 1)

1. Install front mounting bracket (1) using 5/8 x 1-1/2 cap screws (11) and 5/8 lock washers (20) in upper holes, 5/8 x 4 cap screws (9), 5/8 lock washers (20) and 5/8 hex nuts (22) in lower holes. Fasten bottom of front mounting bracket using 5/16 spacers (7), 5/8 flat washers (21), 5/8 lock washers (20) and 5/8 x 1-3/4 cap screws (19).
2. Install left midmounting bracket (4) to tractor transmission casting using 3/4 spacer (5), 5/8 flat washer (21), 5/8 lock washer (20) and 5/8 x 2-1/2 cap screw (10) in upper rear hole and 5/8 flat washer (21), 5/8 lock washer (20) and 5/8 x 1-1/2 cap screw (11) in upper front hole. Fasten lower holes in left midmounting bracket using 1/2 spacers (6), 5/8 lock washers (20) and 5/8 x 2-1/4 cap screws (18).
3. Install right midmounting bracket (3) to tractor casting using 3/4 spacer (5), 5/8 flat washer (21), 5/8 lock washer (20) and 5/8 x 2-3/4 cap screw (25) in upper rear hole and 5/8 flat washer (21), 5/8 lock washer (20) and 5/8 x 1-3/4 cap screw (19) in upper front hole. Fasten lower holes in right midmounting bracket using 2-1/2 spacers (8), 5/8 lock washers (20) and 5/8 x 4-1/4 cap screws (24).
4. Remove inspection cover plate on underside of clutch housing.
5. Fasten cross tie (2) to right and left mid mounting brackets (3 & 4) using 5/8 x 2 cap screws (17) and 5/8 lock nuts (23).
6. Fasten cross tie to bottom of tractor using 5/8 flat washers (21), 5/8 lock washers (20) and 5/8 x 1-3/4 cap screws (19).

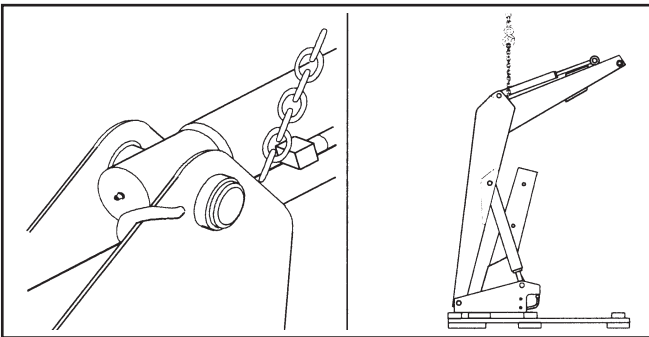
## 2-7335

### PARTS LIST - MOUNTING KIT

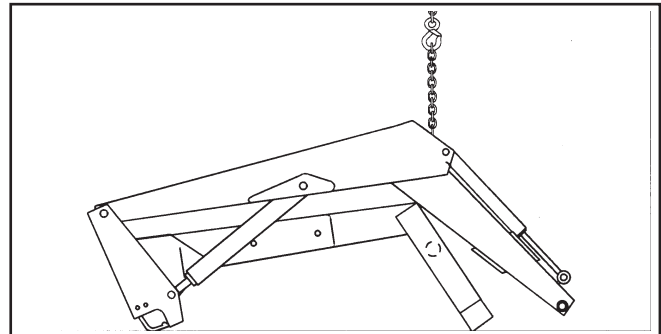
ITEM	PART NO.	DESCRIPTION	QTY.
1	44570	BRACKET, Front Mounting	1
2	51864	CROSS TIE	1
3	51861	BRACKET, Midmounting, Right	1
4	51868	BRACKET, Midmounting, Left	1
5	42787-1	SPACER TUBE .75"	2
6	42787-2	SPACER TUBE .50"	2
7	42787-3	SPACER TUBE .31"	2
8	42787-5	SPACER TUBE 2.50"	2
9	41838-77	SCREW, Cap, 5/8-11 x 4	2
10	41838-64	SCREW, Cap, 5/8-11 x 2-1/2	1
11	41838-29	SCREW, Cap, 5/8-11 x 1-1/2	3
12	41838-7	SCREW, Cap, 3/4-10 x 2-1/2	4
13	41840-8	NUT, Lock, 3/4-10	4
14	44575	YOKE	1
15	39240	DECAL, Do not tow ...	2
16	41838-79	SCREW, Cap, 5/8-11 x 2-3/4	1
17	41838-27	SCREW, Cap, 5/8-11 x 2	4
18	41838-14	SCREW, Cap, 5/8-11 x 2-1/4	2
19	41838-32	SCREW, Cap, 5/8-11 x 1-3/4	7
20	41837-7	WASHER, Lock, 5/8	18
21	42502-12	WASHER, Flat, 5/8	10
22	41836-7	NUT, Hex, 5/8-11	2
23	41840-7	NUT, Lock, 5/8-11	4
24	41838-78	SCREW, Cap, 5/8-11 x 4-1/4	2

### INSTALLING LOADER TO MOUNTING BRACKETS

1. Using overhead hoist to support loader remove hardware securing loader to pallet. Lift loader and remove pallet.

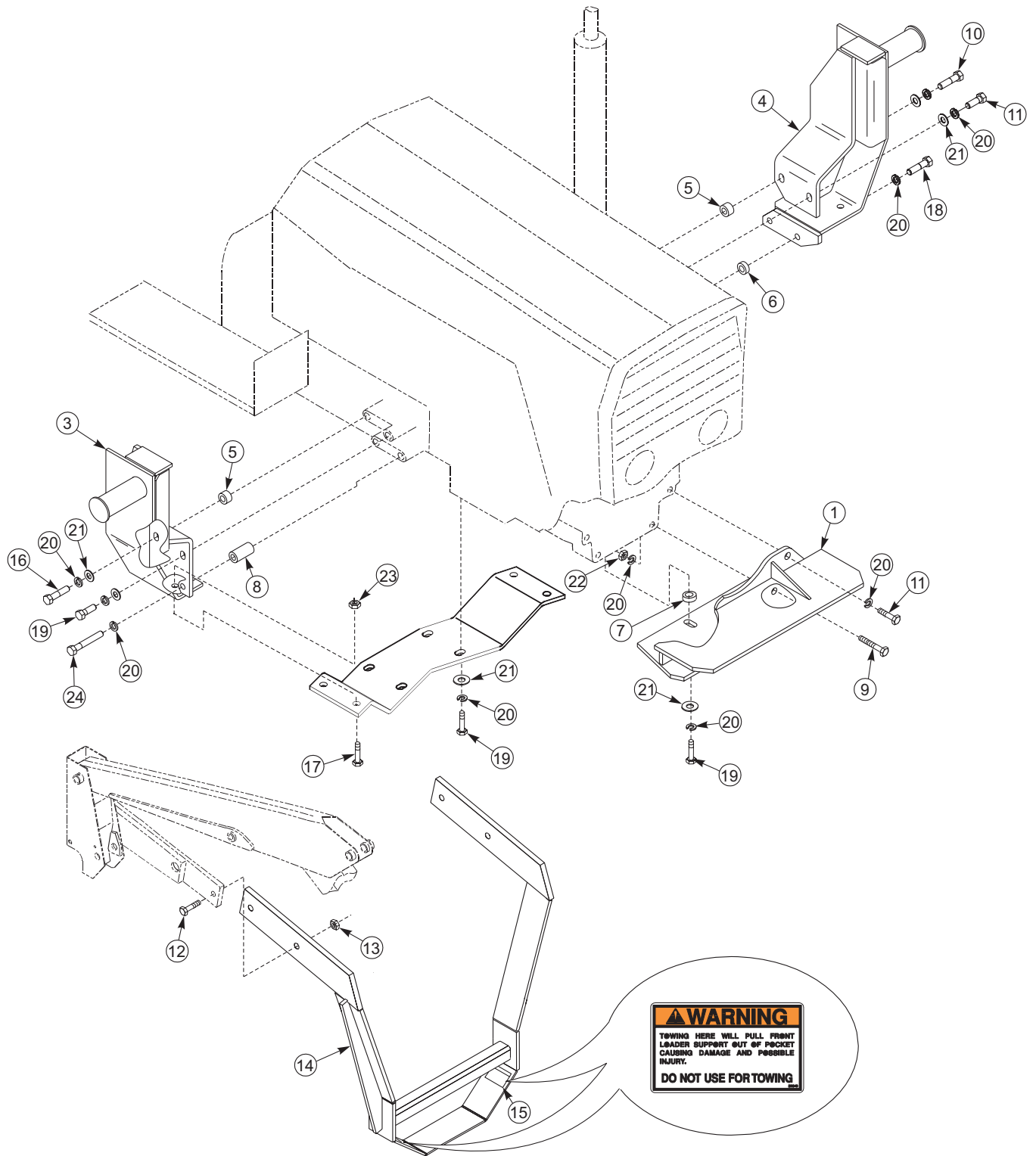


2. Using overhead hoist, lower loader from vertical shipping position to horizontal position leaving enough room to install yoke (scraps of cardboard may be used to protect paint). Install yoke assembly (14) using 3/4 x 2-1/2 cap screws (12) and 3/4 lock nuts (13). Lower loader completely to the ground.



**NOTE:** Hardware connecting yoke to loader side-frames should be snug but do not torque completely. After loader has been mounted to tractor and aligned with midmounting brackets and front mounting brackets, torque hardware to 239-262 ft. lb.

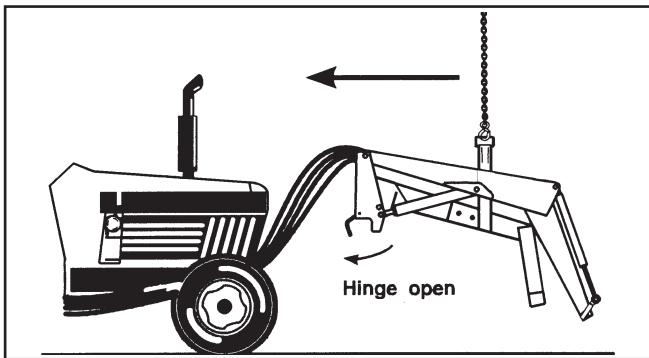
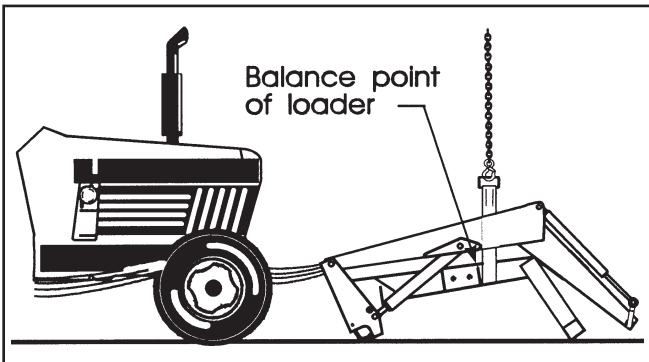
3. Install hose or valve kit to tractor and loader. Refer to assembly manual provided for installation instruc-



## 2-7335

### INSTALLING LOADER TO MOUNTING BRACKETS (Continued)

4. Reposition overhead hoist by looping nylon strap around yoke near loader side frames at balance point of loader.
5. Using overhead hoist, raise loader until side frame uprights will clear front tires. Remove locknut and washer from loader hinge and swing each hinge open.



6. Position loader so hinges hook over mid mounting tubes and yoke tube fits inside front mounting bracket.
7. Clamp hinges to midmounting tubes with 3/4 flat washers and 3/4 flex-lock nuts (supplied with loader).

**IMPORTANT:** Be sure to use flex-lock nuts to clamp hinge. Tighten flex-lock nuts against hinge securely, but not to more than 125 ft.-lb. torque.

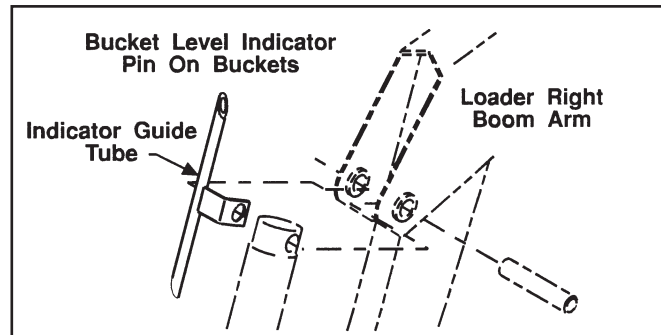
8. Adjust front wheel tread settings or steering stops, if necessary to prevent interference between tires and

loader. Refer to tractor operator's manual for adjustment procedures.

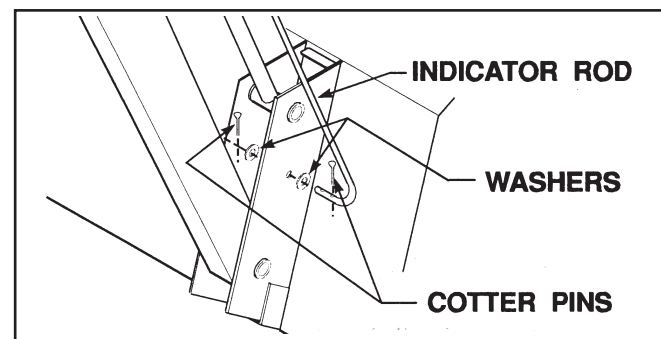
### INSTALLING BUCKET

Refer to instruction sheet for instructions on installing bucket.

### INSTALLING BUCKET LEVEL INDICATOR



1. Attach indicator guide tube to cylinder pin. Guide tube is positioned to outside of boom.
2. Slide bucket level indicator rod through guide tube.



Attach other end of rod with 1/8 x 1 cotter pins and 3/8 flat washers.

3. Locate tractor and loader on level surface. With bottom of bucket resting on surface, cut off excess rod flush with end of guide tube or paint exposed rod a

# INSTALLATION INSTRUCTIONS