

Keep with Operator's Manual
-----------------------------

---

## LOADER MOUNTING KIT 2408 LOADER AGCO ST35, ST35X, ST40 & ST40X FWA (SERIAL NO. BEGINNING WITH "JL" OR "JM") AND MASSEY FERGUSON 1433, 1433V, 1440 & 1440V FWA TRACTORS

---

### TRACTOR AND MOUNTING KIT GENERAL INFORMATION

Mounting kit can be installed on tractor using tools ordinarily available. Shut off engine and engage brakes during installation.

**NOTE:** *Steering stop system (AGCO part number MFC4784), which is provided with tractor as standard equipment by tractor manufacturer, must be installed on tractor front axle before installing loader mounting brackets. Failure to install tractor manufacturer's steering stop system will result in tire interference with loader or mounting brackets.*

This mounting kit is not compatible with a front bumper or weight bracket. If tractor is equipped with a front bumper or weight bracket, remove it before installing loader mounting kit.

### INSTALLING LOADER MOUNTING BRACKETS (Figure 1)

**NOTE:** *Install all attaching hardware loose (unless noted otherwise) until mounting kit is completely assembled to facilitate assembly and proper alignment. Tighten all hardware to torques specified in General Torque Specifications table included in the loader operator's manual.*

1. Fasten front mounting bracket (1) to front of tractor frame using 12mm x 40mm cap screws (9) and 1/2" lock washers (16). For "V" and "X" models of tractors, use 12mm hex nut (17) and 1/2" lock washer (16) on inside of front frame plate. Place flat spacers (4) between side plates of front mounting bracket (1) and side plates of tractor frame. Fasten front mounting bracket (1) and spacers (4) to sides of tractor frame using 1/2-13 x 2" cap screws (10), flat washers (15), and lock nuts (14).

**NOTE:** *Mounting kit is designed to be compatible with AGCO and Massey Ferguson mid-mounted mowers. If tractor is equipped with mid mounted mower, do not use spacer plates (4), as mower front attaching brackets will use spacer thickness.*

2. Attach left mid mounting bracket (2) to left side of tractor transmission casting using 14mm-2.00 x 35mm cap screws (7), and lock washers (13) in all holes except two front-most slots of left mid mounting. Access lower front hole through mid mount support tube. Attach left mid mounting bracket (2) to tractor frame at two front-most slots using 12mm-1.75 x 35mm cap screws (8) flat washers (15) and 1/2" lock washers (16). Repeat procedure to attach right mid mounting bracket (3) to right side of tractor.

**NOTE:** *Mounting kit is designed to be compatible with AGCO and Massey Ferguson mid-mounted mowers. Bottom holes of mid mounting brackets are provided to attach mid mower support straps.*

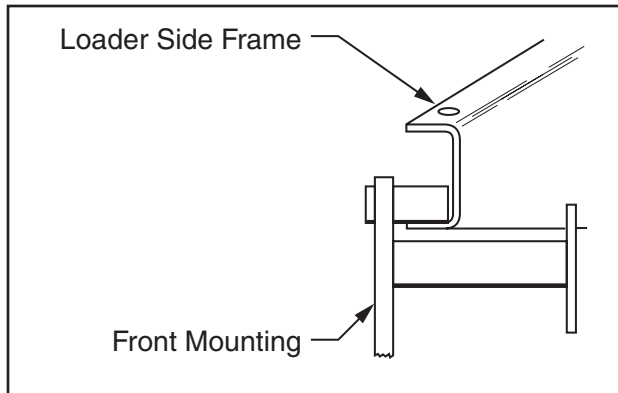
3. If tractor is equipped with industrial tires, axle oscillation needs to be restricted. Place rubber expansion nuts (11) into tractor side frame in front and above front axle. Attach left and right oscillation stops (5 & 6) to expansion nuts (11) using 5/16 x 1-1/4" bolts (18) and 5/16 flat washer (12). Tighten bolts until oscillation stops are secure.
4. Tighten all hardware to torques specified in General Torque Specifications table included in loader operator's manual.

### INSTALLING LOADER ONTO TRACTOR AND MOUNTING BRACKETS

1. Attach nylon slings around loader front bumper and use an overhead hoist to support loader while removing fabricated angle brackets and attaching hardware which secure loader to pallet for shipping.
2. Temporarily remove 5/8-10 lock nuts and 5/8" flat washers from 5/8-10 x 2-1/4" cap screws which fasten hinges shut so hinges can be opened. Lower loader to a horizontal position and attach nylon slings around loader lift boom arms.
3. Use overhead hoist to raise loader and position side frame channels over front mounting bracket. Slide loader to rear until side frame uprights are on mid mounting tubes.

## INSTALLING LOADER ONTO TRACTOR AND MOUNTING BRACKETS (Continued)

**NOTE:** Lower lip of side frame channel must be between cylindrical members on each side of front mounting brackets.



**NOTE:** Take care to avoid side of tractor platform when positioning loader onto mid mount brackets.

**NOTE:** If mower deck is mounted on tractor, lower mower deck before lowering loader onto mounting brackets to avoid damage.

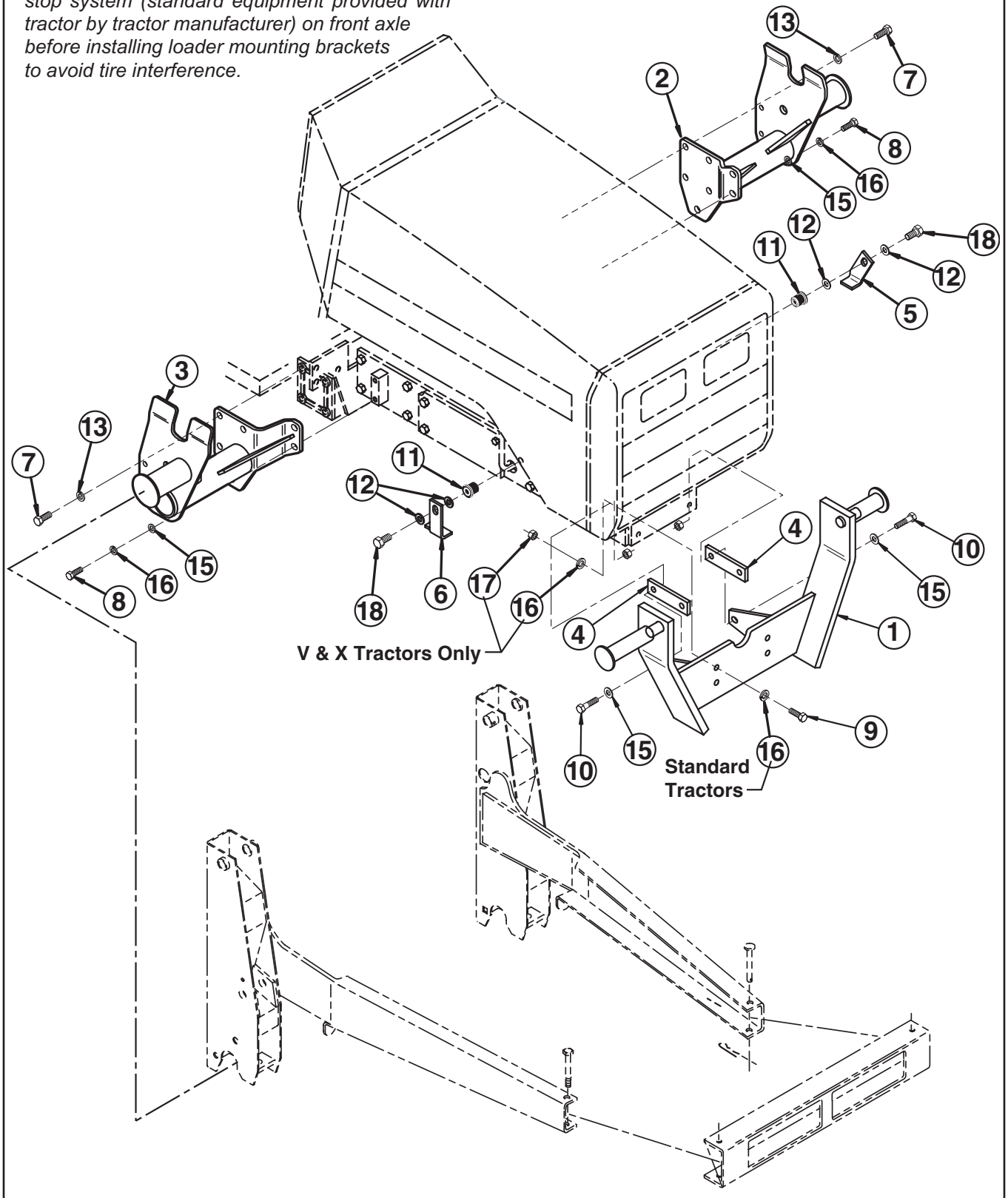
4. Clamp hinges around tubes of mid mounting brackets. Fasten hinges using 5/8-10 x 2-1/4" cap screws, flat washers, lock washers, and nuts removed earlier.
5. Refer to loader operator's manual and plumbing kit instructions to complete loader installation and for location of decals.
6. Adjust front wheel tread setting and steering stops, if necessary to provide a minimum 3/4" clearance between front tires and any part of loader or mountings with lift cylinders fully retracted and front axle fully oscillated. Be sure lift cylinders are fully retracted. Refer to tractor operator's manual for tread setting and steering stop adjustment procedures.

## PARTS LIST – MOUNTING KIT

Item	Part No.	Description	Qty.
1	52456	MOUNTING BRACKET, Front	1
2	51638-1	MOUNTING BRACKET, Mid, Left	1
3	51638-2	MOUNTING BRACKET, Mid, Right	1
4	51054	SPACER, Plate	2
5	51053	OSCILLATION STOP, Left	1
6	51052	OSCILLATION STOP, Right	1
7	49040-12	SCREW, Cap, 14mm-2.00 x 35mm Class 10.9	8
8	49040-11	SCREW, Cap, 12mm-1.75 x 35mm Class 10.9	4
9	49040-13	SCREW, Cap, 12mm-1.75 x 40mm Class 10.9	4
10	41838-13	SCREW, Cap, 1/2-13 x 2" Class 5	4
11	51175-1	NUT, Rubber Expansion	2
12	42502-27	WASHER, Flat, 5/16"	4
13	41837-6	WASHER, Lock, 9/16"	8
14	41840-5	NUT, Lock, 1/2-13, Type-N	4
15	42502-10	WASHER, Flat, 1/2"	8
16	41837-5	WASHER, Lock, 1/2"	8
17	26457-7	NUT, Hex 12mm-1.75 x 40mm (V & X Models)	4
18	41838-34	SCREW, Cap, 5/16-18 x 1.25 YDP	2

**Figure 2**  
**LOADER MOUNTING KIT**



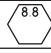
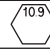
**NOTE:** Tractor must be equipped with steering stop system (standard equipment provided with tractor by tractor manufacturer) on front axle before installing loader mounting brackets to avoid tire interference.



## GENERAL TORQUE SPECIFICATIONS

USE THE FOLLOWING TORQUES WHEN SPECIAL TORQUES ARE NOT GIVEN

### Standard American and Metric Cap Screws

AMERICAN STANDARD CAP SCREWS										METRIC CAP SCREWS								
SAE Grade	5				8				Metric Class	8.8				10.9				
Typ. Head Markings									Typ. Head Markings									
Cap Screw	TORQUE				TORQUE				Cap Screw	TORQUE				TORQUE				
Size	FT·LBS		N·m		FT·LBS		N·m		Size	FT·LBS		N·m		FT·LBS		N·m		
Inches	MIN	MAX	MIN	MAX	MIN	MAX	MIN	MAX	Millimeters	MIN	MAX	MIN	MAX	MIN	MAX	MIN	MAX	
1/4 - 20	6.25	7.25	8.5	10	8.25	9.5	11	13	M6 x 1.00	6	8	8	11	9	11	12	15	
1/4 - 28	8	9	11	12	10.5	12	14	16	M8 x 1.25	16	20	21.5	27	23	27	31	36.5	
5/16 - 18	14	15	19	20	18.5	20	25	27	M10 x 1.50	29	35	39	47	42	52	57	70	
5/16 - 24	17.5	19	23	26	23	25	31	34	M12 x 1.75	52	62	70	84	75	91	102	123	
3/8 - 16	26	28	35	38	35	37	47.5	50	M14 x 2.00	85	103	115	139	120	146	163	198	
3/8 - 24	31	34	42	46	41	45	55.5	61	M16 x 2.50	130	158	176	214	176	216	238	293	
7/16 - 14	41	45	55.5	61	55	60	74.5	81	M18 x 2.50	172	210	233	284	240	294	325	398	
7/16 - 20	51	55	69	74.5	68	75	92	102	M20 x 2.50	247	301	335	408	343	426	465	577	
1/2 - 13	65	72	88	97.5	86	96	116	130	M22 x 2.50	332	404	450	547	472	576	639	780	
1/2 - 20	76	84	103	114	102	112	138	152	M24 x 3.00	423	517	573	700	599	732	812	992	
9/16 - 12	95	105	129	142	127	140	172	190	M27 x 3.00	637	779	863	1055	898	1098	1217	1488	
9/16 - 18	111	123	150	167	148	164	200	222	M30 x 3.00	872	1066	1181	1444	1224	1496	1658	2027	
5/8 - 11	126	139	171	188	168	185	228	251	<p><b>NOTE:</b> These values apply to fasteners as received from supplier, dry or when lubricated with normal engine oil. They do not apply if special graphite or molysulphide greases or other extreme lubricants are used.</p>									
5/8 - 18	152	168	206	228	203	224	275	304										
3/4 - 10	238	262	322	355	318	350	431	474										
3/4 - 16	274	305	371	409	365	402	495	544										
7/8 - 9	350	386	474	523	466	515	631	698										
7/8 - 14	407	448	551	607	543	597	736	809										
1 - 8	537	592	728	802	716	790	970	1070										
1 - 14	670	740	908	1003	894	987	1211	1337										

# INSTALLATION INSTRUCTIONS