

Keep with Operator's Manual

TWO FUNCTION HOSE KIT TO TRACTOR REAR REMOTE VALVES

GENERAL INFORMATION

Plumbing kit can be installed using tools ordinarily available.

Shut off engine and engage brakes during installation.

IMPORTANT: Check for proper tractor valve operation before plumbing loader to tractor. See tractor owner's manual for instructions.

NOTE: Apply sealant only to all tapered threads unless coupled with swivel adapters. When using teflon tape, wrap tape clockwise (as viewed from end) and wrap only twice. Keep sealant away from first two threads of tapered end to prevent contamination of hydraulic fluid. Do not use sealant on o-ring or flare adapter threads.



WARNING: Escaping hydraulic fluid under pressure can penetrate skin causing serious injury.

- DO NOT use your hands to check for leaks. Use a piece of cardboard or paper to search for leaks.
- Stop engine and relieve pressure before connecting or disconnecting lines.
- Tighten all connections before starting engine or pressurizing lines.

If any fluid is injected into skin, obtain medical attention immediately or gangrene may result.

PLUMBING LOADER TO REAR REMOTE VALVE (Figure 1)

1. Starting at the bottom and working up, install female end of 3/8 x 120" long hose (1) to oil line tubes .
2. Install 5/8 diameter color coded bands (14, 15, 16, & 17) to female ends of hoses which are attached to boom oil line tubes in sequence shown in Figure 1.

Hose with blue band attaches to tilt cylinder base (TCB). Hose with red band attaches to tilt cylinder rod (TCR). Hose with yellow band attaches to lift cylinder rod (LCR). Hose with green band attaches to lift cylinder base (LCB).

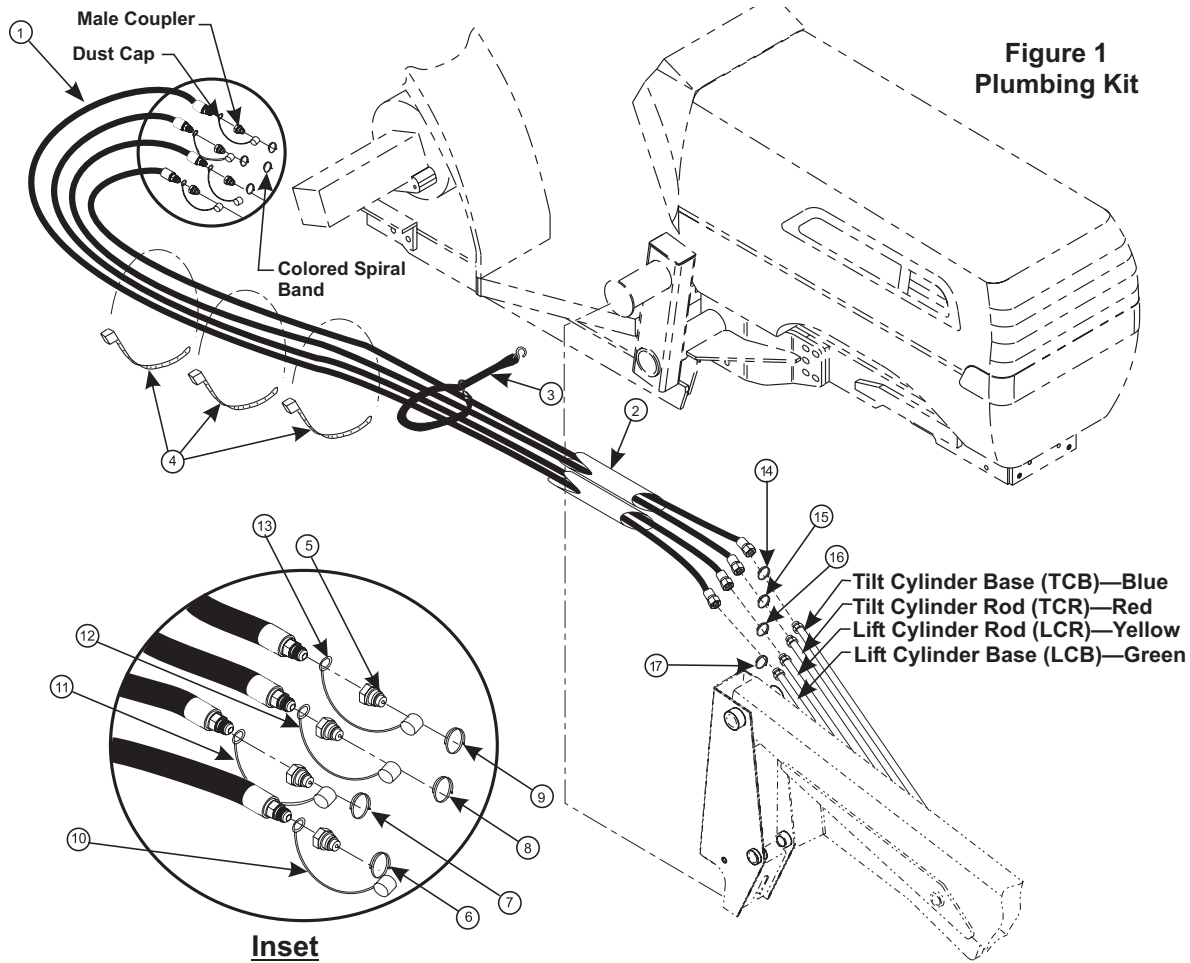
3. Install color coded dust caps (10, 11, 12, & 13) on male ends of hoses. It is important that color coding corresponds between dustcap and spiral band on each hose.
4. Slide one nylon sleeve (2) over two hoses connected to lift cylinder oil line tubes and slide one nylon sleeve (2) over two hoses connected to tilt cylinder oil line tubes. Position sleeve as close to boom oil lines as possible, covering hose crimps.
5. Install male couplers (5) to male ends of 3/8 x 120" long hoses (1).
6. Attach loader hoses (1) with male couplers and colored dust caps to tractor rear remote couplers. Install 1" color coded spiral bands to tractor rear remote couplers.



WARNING: For proper loader function, operate loader only from approved valves. When plugging couplers into tractor remote couplers, be sure to connect the hoses (blue & red coded) from the upper two boom oil lines to the tractor remote couplers controlled by the valve which is to control bucket rotation. The hoses from the lower two boom oil lines (yellow & green coded) should be connected to the tractor remote couplers controlled by the valve which is to raise or lower the boom. This will insure proper function of loader.

7. Using 1/2 x 20 adjustable straps (4) and tarp strap (3), bundle hoses together. Secure hoses to tractor approximately equal distance along the length of the hoses to avoid interference with moving parts.
8. After all plumbing has been completed slowly cycle lift and bucket cylinders several times to purge air from hydraulic system. Retract cylinders and shut off engine. Replenish tractor hydraulic system.

NOTE: When cycling the loader, operate the lever(s) according to the functioning desired. If direction of a control lever is wrong, exchange the quick couplers at the remote couplers controlled by that valve lever.



PARTS LIST - PLUMBING KIT (Figure 1)

Item	Part No.	Description	Qty.
1	44269-5	HOSE, 3/8 x 120"	4
2	34853-3	SLEEVE, Nylon, 1-3/4 x 60"	2
3	7438-1	TARP STRAP	1
4	8137-3	STRAP, Adjustable	3
5	6137-10	COUPLER, Male	4
6	36240-9	SPIRAL BAND, Blue, 1"	1
7	36240-10	SPIRAL BAND, Red, 1"	1
8	36240-11	SPIRAL BAND, Yellow, 1"	1
9	36240-12	SPIRAL BAND, Green, 1"	1
10	4838-8	DUST CAP, Blue	1
11	4838-3	DUST CAP, Red	1
12	4838-9	DUST CAP, Yellow	1
13	4838-10	DUST CAP, Green	1
14	36240-5	SPIRAL BAND, Blue, 5/8	1
15	36240-6	SPIRAL BAND, Red, 5/8	1
16	36240-7	SPIRAL BAND, Yellow, 5/8	1
17	36240-8	SPIRAL BAND, Green, 5/8	1

INSTALLATION INSTRUCTIONS