

Keep With Operator's Manual

NEW HOLLAND 759C & CASE IH BHX1114 BACKHOE SUBFRAME NEW HOLLAND TC48 & TC55 AND CASE IH DX48 & DX55 TRACTORS

Backhoe subframe can be installed on tractor and backhoe using tools ordinarily available.

Complete backhoe installation requires hydraulic kit 715392006 (2-7242) or pump kit. Install hydraulic kit to tractor before mounting backhoe.

Tractor must be equipped with sufficient counterbalance at front, such as that provided by a front loader or front blade, to install backhoe.

If tractor is to be equipped with a front blade or front loader, install it before installing backhoe subframe.

IMPORTANT: When installing front loader, use subframe mid hanger plates (5) and spacer (21) in place of 1/2" spacers provided with front loader mounting kit (see figure 1). Use longer 16mm-2.0 hardware provided with loader mounting kit instead of 16mm-2.0 x 45mm cap screws (11) provided in backhoe subframe kit.

Reference to right, left, front, and back used in these instructions refers to operator seated in tractor seat in normal operating position. Shut off tractor engine and engage brakes during installation.

INSTALLING SUBFRAME TO BACKHOE (Figure 3)

1. Install subframe (1) to backhoe using 3/4 x 2" cap screws (14) and 3/4" lock nuts (18). Torque to 350 ft lbs.

IMPORTANT: If pump kit is to be installed, install spacers (9) and pump bracket between subframe and backhoe. Refer to instructions provided with pump kit.

INSTALLING MOUNTING BRACKETS (Figure 3)

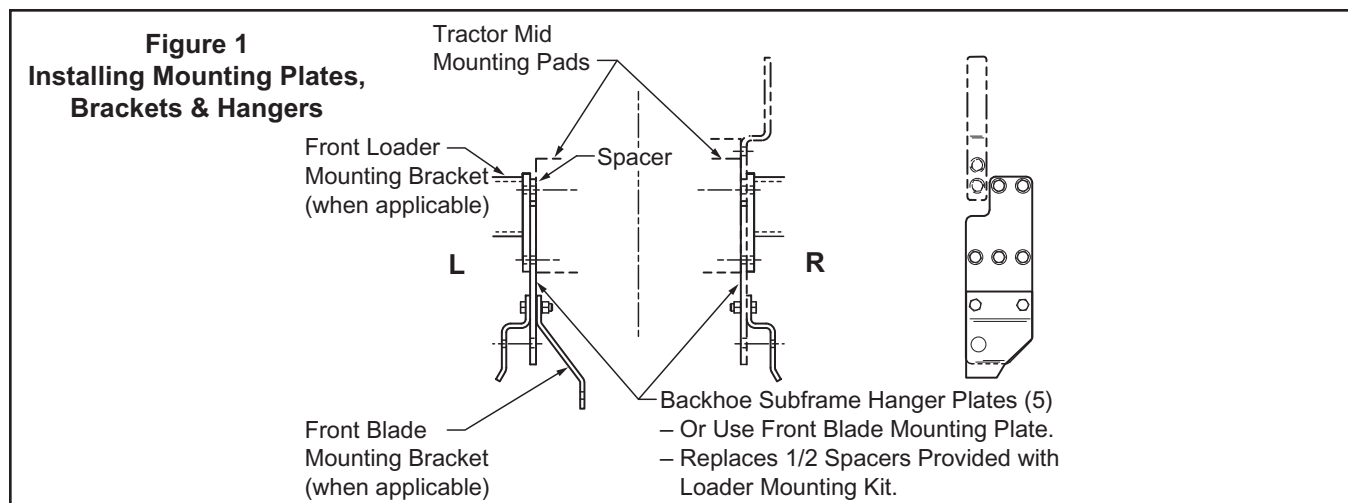
1. Supporting tractor hitch bracket, remove 16mm cap screws which secure hitch to underside of tractor. (Hitch bracket will remain with tractor.)
2. Install mounting bracket (2) under hitch bracket and secure mounting bracket (2) and hitch bracket to underside of tractor using 16mm-2.0 x 45mm cap screws (12) and 5/8" lock washers (19).
3. If tractor is not equipped with a front loader or front blade, attach subframe mid hanger plates (5) to tractor mid mounting pads using 16mm-2.0 x 40mm cap screws (11) and 5/8" lock washers (19).

NOTE: If tractor is equipped with a front blade, mid hanger plates for front blade are identical to, and are used in place of mid hanger plates (5). If tractor is equipped with a front loader, you will have already installed mid hanger plates (5) and spacer (21) in place of spacers provided with loader mounting kit.

4. Fasten mounting ears (6 & 7) to mid hanger plates (5) using 5/8-11 x 1-3/4" cap screws (15) and 5/8-11 lock nuts (9).

NOTE: If tractor is equipped with a front blade, use 5/8-11 x 2-1/4" cap screws (20) with lock nuts (9) to fasten mounting ears (6 & 7) and left and right mounting hangers of front blade to hanger plates (5).

5. Temporarily remove PTO shield by removing existing 16mm hardware.



INSTALLING MOUNTING BRACKETS (Continued)

6. Re-install PTO shield with rear supports (3 & 4) under PTO shield using 16mm-2.0 x 40mm cap screws (11) and 5/8" lock washers (19).
7. Fasten rear supports (3 & 4) to mounting bracket (2) using 1/2 x 1-1/2" cap screws (13) and 1/2" lock nuts (17).
8. When all subframe mounting brackets have been installed, torque all hardware to torques specified in general torque specifications table.

REMOVING BACKHOE FROM PALLET

1. Install pump kit or hose kit. Refer to instructions packed with kit for proper installation procedure. Back tractor, parallel to subframe assembly, close to backhoe.



CAUTION: Do not remove hardware which secures backhoe to pallet until bucket is installed. Backhoe may tip over causing damage or serious personal injury.

2. Remove stabilizers from shipping position. Install stabilizers to backhoe using pins provided. Connect stabilizer cylinders to stabilizers using pins provided.
3. Connect pump or hoses to tractor. Set bucket in place below dipper stick. Remove boom lock pin and carefully extend boom cylinder (lower boom) until bucket can be connected to dipperstick.
4. Install bucket to dipperstick using pins, 3/8 x 2-1/2" cap screws and 3/8" lock nuts provided. Carefully extend bucket cylinder and connect bucket to four bar link.

5. Install seat assembly to platform using 3/8 x 1-1/4" cap screws and 3/8" lock nuts provided.



CAUTION: Do not fully extend boom or dipperstick until backhoe is mounted to tractor. Extending boom or dipperstick may cause backhoe to tip over resulting in damage to backhoe or serious personal injury.

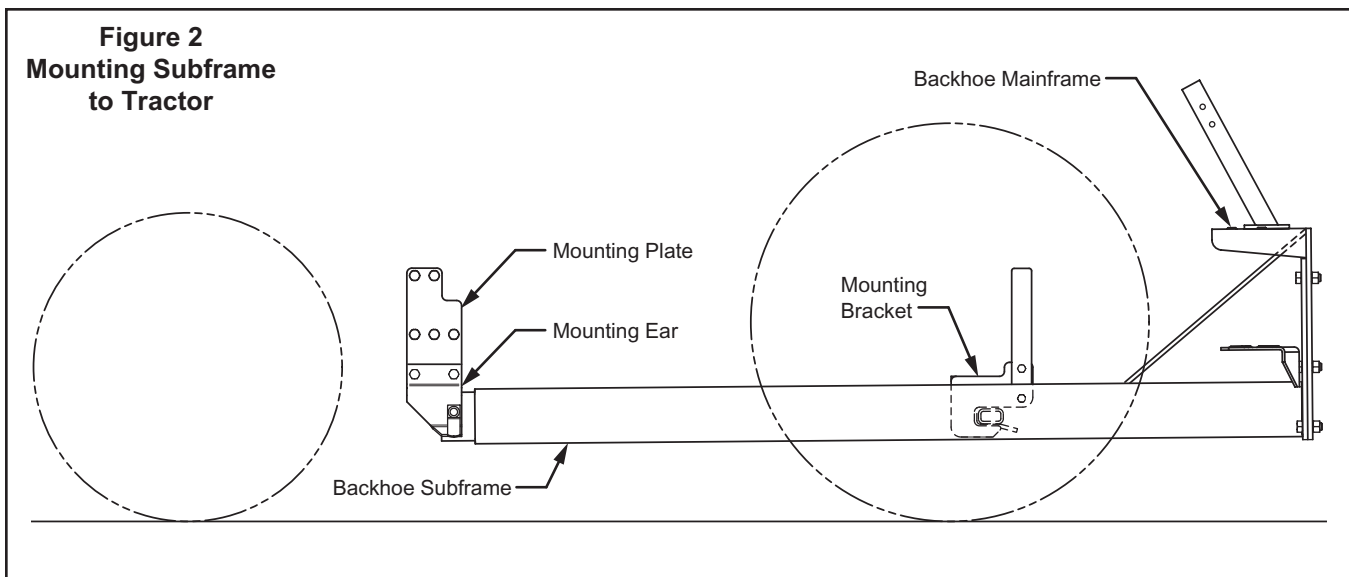
NOTE: Remove protective coating from cylinder rods before operating backhoe controls.

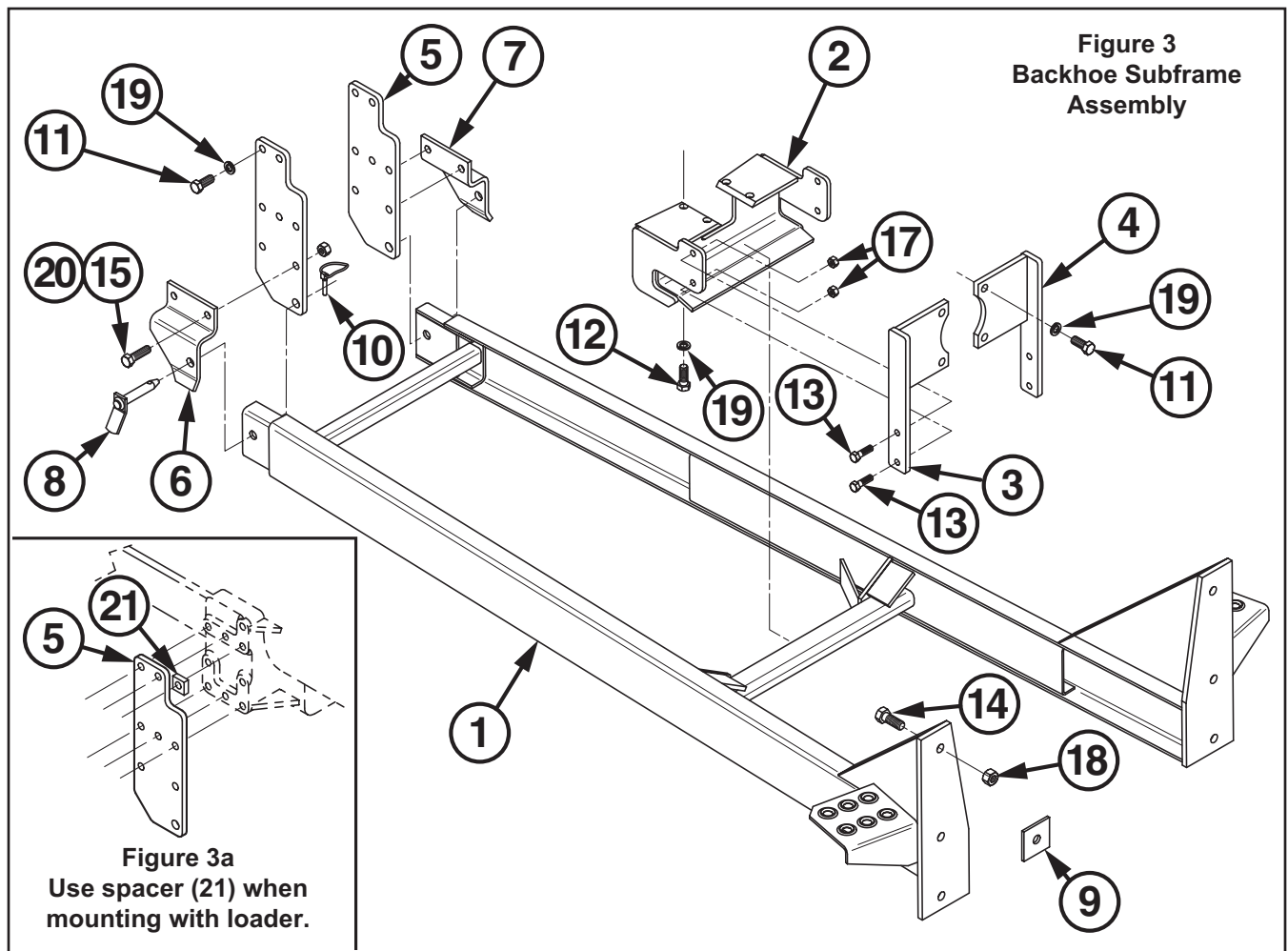
6. Using backhoe hydraulics carefully lower stabilizers and bucket to lift pallet off ground. Remove hardware and slide pallet out of the way. Lower backhoe to ground.

MOUNTING BACKHOE TO TRACTOR (Figures 2 & 3)

1. Start engine and run at slow idle speed. Using backhoe controls, lower bucket and stabilizers to provide a base for raising subframe. Using backhoe controls, raise subframe to proper height to connect to tractor.
2. Position 3-point hitch arms inside subframe.
3. Slowly back tractor so cross tube engages pocket in rear mounting bracket (2) and holes in front of subframe align with front mounting ears (6 & 7). Install 3/4" hitch pins (8) and lynch pins (10).

NOTE: After backhoe is mounted, swing backhoe full right and full left to be sure there is not interference between swing cylinders and 3-point hitch arms.







**PARTS LIST - BACKHOE SUBFRAME**

Item	SMC No.	NH No.	Case IH No.	Description	Qty.
1	45400	SML45400	SML45400	SUBFRAME, Backhoe	1
2	51499	SML51499	SML51499	BRACKET, Subframe Mounting, Rear	1
3	44922-1	SML449221	SML449221	BRACKET, Subframe Rear Mounting, Left	1
4	44922-2	SML449222	SML449222	BRACKET, Subframe Rear Mounting, Right	1
5	51179	SML51179	SML51179	PLATE, Subframe Mid Hanger	2
6	51189-1	SML511891	SML511891	BRACKET, Subframe Mid Hanger, Left	1
7	51189-2	SML511892	SML511892	BRACKET, Subframe Mid Hanger, Right	1
8	44892	SML44892	SML44892	PIN, Hitch	2
9	31897	SML31897	SML31897	FLAT, Spacer (used when mounting tank)	2
10	44756-1	SML447561	SML447561	LINCH PIN	2
11	42672-15	43168	PL	SCREW, Cap, Hex, Metric, 16MM-2.0 x 40MM Class 8.8	14
12	42672-21	385922	PL	SCREW, Cap, Hex, Metric, 16MM-2.0 x 45MM Class 8.8	4
13	41838-33	87689	PL	SCREW, Cap, Hex, 1/2-13 x 1-1/2" Grade 5	4
14	42969-13	88557	PL	SCREW, Cap, Hex, 3/4-10 x 2" Grade 8	6
15	41838-32	9627896	PL	SCREW, Cap, Hex, 5/8-11 x 1-3/4" Grade 5	4
16	41840-7	19670	231-41410	NUT, Hex, Lock, 5/8-11, Type N	4
17	41840-5	9636698	231-4148	NUT, Hex, Lock, 1/2-13, Type N	4
18	47264-8	9626598	PL	NUT, Hex, Lock, 3/4-10, Grade C	6
19	41837-7	80084057	PL	WASHER, Lock, 5/8"	18
20	41838-14	88556	413-1036	SCREW, Cap, 5/8-11 x 2-1/4" Grade 5	4
21	51210	SML51210	SML51210	SPACER (used when mounting loader)	1

GENERAL TORQUE SPECIFICATIONS

USE THE FOLLOWING TORQUES WHEN SPECIAL TORQUES ARE NOT GIVEN

AMERICAN STANDARD CAP SCREWS									METRIC CAP SCREWS								
SAE Grade	5				8				Metric Class	8.8				10.9			
Typical Grade ID Markings on Head									Typical Grade ID Markings on Head								
Cap Screw	TORQUE				TORQUE				Cap Screw	TORQUE				TORQUE			
Size	FT-LBS		N•m		FT-LBS		N•m		Size	FT-LBS		N•m		FT-LBS		N•m	
Inches	MIN	MAX	MIN	MAX	MIN	MAX	MIN	MAX	Millimeters	MIN	MAX	MIN	MAX	MIN	MAX	MIN	MAX
1/4-20	6.25	7.25	8.5	10	8.25	9.5	11	13	M6 x 1.00	6	8	8	11	9	11	12	15
1/4-28	8	9	11	12	10.5	12	14	16	M8 x 1.25	16	20	21.5	27	23	27	31	36.5
5/16-18	14	15	19	20	18.5	20	25	27	M10 x 1.50	29	35	39	47	42	52	57	70
5/16-24	17.5	19	23	26	23	25	31	34	M12 x 1.75	52	62	70	84	75	91	102	123
3/8-16	26	28	35	38	35	37	47.5	50	M14 x 2.00	85	103	115	139	120	146	163	198
3/8-24	31	34	42	46	41	45	55.5	61	M16 x 2.50	130	158	176	214	176	216	238	293
7/16-14	41	45	55.5	61	55	60	74.5	81	M18 x 2.50	172	210	233	284	240	294	325	398
7/16-20	51	55	69	74.5	68	75	92	102	M20 x 2.50	274	301	335	408	343	426	465	577
1/2-13	65	72	88	97.5	86	96	116	130	M22 x 2.50	332	404	450	547	472	576	639	780
1/2-20	76	84	103	114	102	112	138	152	M24 x 3.00	423	517	573	700	599	732	812	992
9/16-12	95	105	129	142	127	140	172	190	M27 x 3.00	637	779	863	1055	898	1098	1217	1488
9/16-18	111	123	150	167	148	164	200	222	M30 x 3.00	872	1066	1181	1444	1224	1496	1658	2027
5/8-11	126	139	171	188	168	185	228	251	<p>NOTE: These values apply to fasteners as received from the supplier, dry or when lubricated with normal engine oil. They do not apply if special graphite or molydisulphide greases or other extreme pressure lubricants are used.</p>								
5/8-18	152	168	206	228	203	224	275	304									
3/4-10	238	262	322	355	318	350	431	474									
3/4-16	274	305	371	409	365	402	495	544									
7/8-9	350	386	474	523	466	515	631	698									
7/8-14	407	448	551	607	543	597	736	809									
1-8	537	592	728	802	716	790	970	1070									
1-14	670	740	908	1003	894	987	1211	1337									

INSTALLATION INSTRUCTIONS