

| |
|-----------------------------|
| Keep With Operator's Manual |
|-----------------------------|

LOADER SUBFRAME KIT 7214 LOADER NEW HOLLAND TM SERIES TRACTORS

| MODEL | FWD | FWD with Terraglide™ | Super Steer | 2 WD |
|-------|-----|----------------------|-------------|------|
| TM120 | X | X | X | X |
| TM130 | X | X | X | X |
| TM140 | X | X | X | X |
| TM150 | X | X | X | X |
| TM155 | X | X | X | X |
| TM165 | X | X | X | X |
| TM175 | X | X | X | X |
| TM190 | X | X | X | X |

TRACTOR & LOADER GENERAL INFORMATION

Subframe kit can be installed using tools ordinarily available.

Before installing subframe kit, tractor must be equipped with (2-7168) or (2-7169) mounting kit.

PREPARING TRACTOR

Shut off engine, engage brakes during installation, and remove key.

On TM115 and TM125 tractors it may be necessary to grind tabs on underside of rear tractor axle when installing loader subframe assembly (items 2 & 3 on figure 2).

On tractors with suspended cab, remove bolts on under side of tractor rear axle.

Run 18mm-1.50 thread tap into holes on underside of tractor rear axle casting which are used for loader subframe.

If equipped, radar gun and mounting bracket must be removed, to be relocated later (See figure 1).

INSTALLING SUBFRAMES & CROSSTIE (Figure 1)

NOTE: Loosely install hardware until subframe kit is completely assembled to facilitate assembly and proper alignment. All mounting hardware will be torqued later.

1. Raise right subframe assembly (3) and attach to rear axle housing with four 18mm x 60mm cap screws (8) and four 18mm lock washers (4). Attach remaining end of subframe to right mid mount assembly with two 3/4 x 3-1/2 cap screw (5) and 3/4 lock nuts (6).
2. Raise left subframe assembly (2) and attach to rear axle housing with four 18mm x 60mm cap screws (8) and four 18mm lock washers (4). Attach remaining end of subframe to left mid mount assembly with two 3/4 x 3-1/2 cap screw (5) and 3/4 lock nuts (6).
3. Raise crosstie and attach to right and left subframe assemblies (2 & 3) with four 3/4 x 3-1/2 cap screws (5), and 3/4 lock nuts (6), as illustrated in figure 2.
4. Tighten and torque hardware to specifications found on torque chart on page 4.

NOTE: Spacer (1) required on suspended cab TM165 models only.

NOTE: Subframe and crosstie hardware must be retorqued after initial 10 hours use and after every additional 100 hours.

2-7170

RADAR GUN (Figure 1)

On Terra-Glide axle tractor only, remove two Terra-Glide hydraulic hose clamps on right side near loader mount.

Attach radar gun (if equipped) to bracket located on right subframe assembly (3) with 3/4 x 1-1/2 cap screws and 3/4-10 lock nut as illustrated in figure 1. On Terra-Glide axle tractor only, use tie straps supplied in mount kit to secure Terra-Glide hoses.

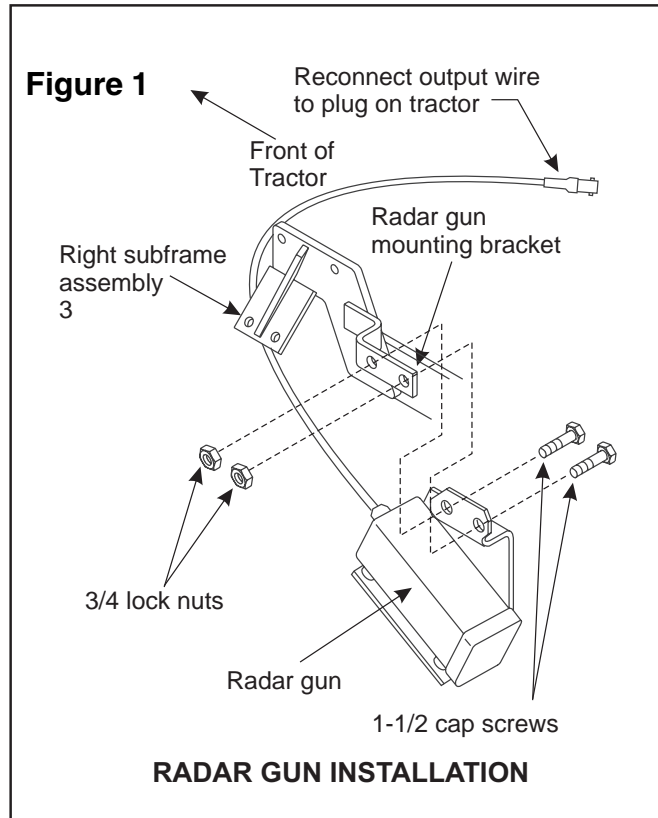
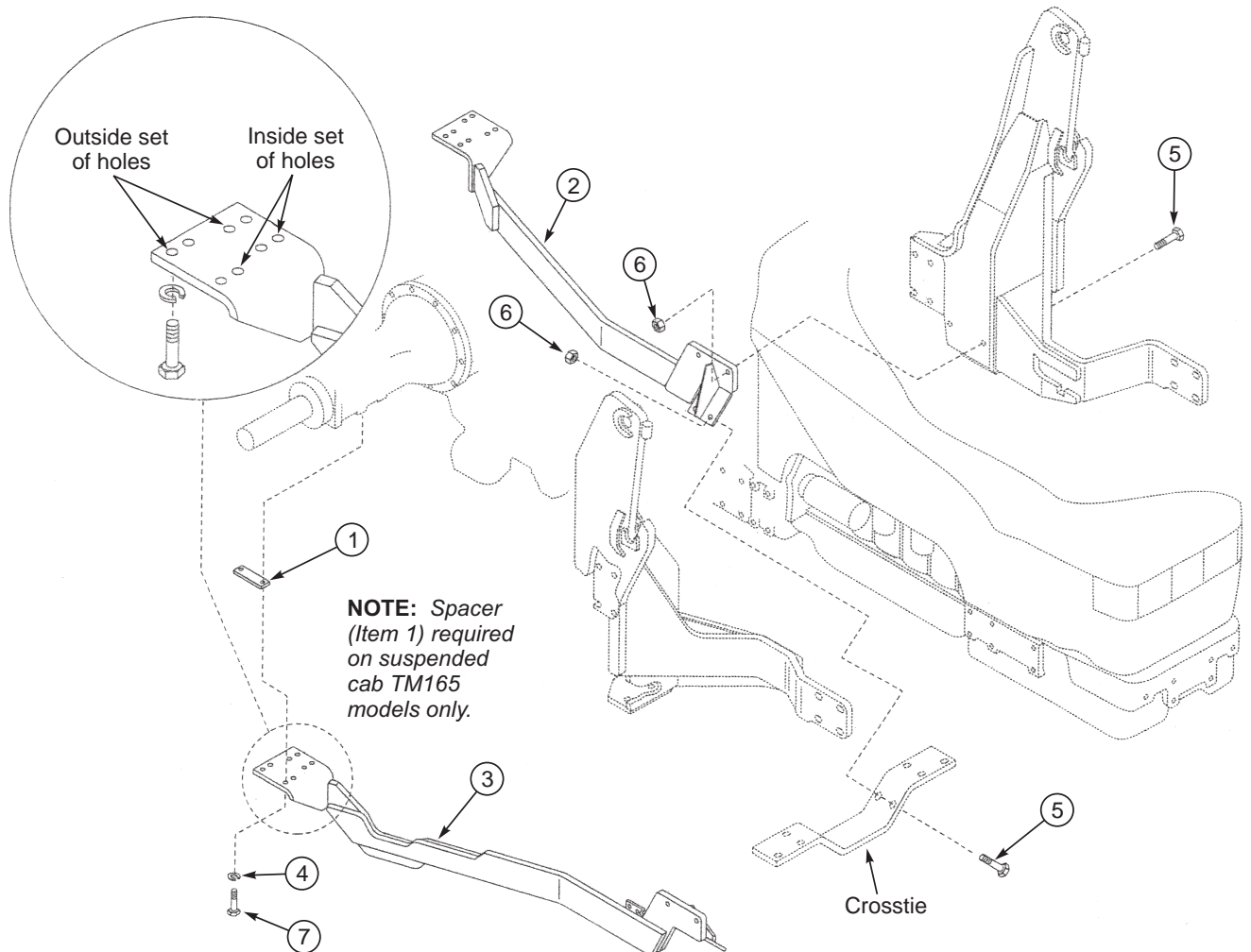


Figure 2
Subframe Kit






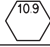
PARTS LIST - 72LA SUBFRAME KIT (Figure 2)

| ITEM | PART NO. | DESCRIPTION | QTY. |
|------|----------|-----------------------------|------|
| 1 | 47921 | SPACER | 2 |
| 2 | 49457 | SUBFRAME ASSEMBLY, Left | 1 |
| 3 | 49458 | SUBFRAME ASSEMBLY, Right | 1 |
| 4 | 48093-1 | WASHER, Lock, 18MM | 8 |
| 5 | 41838-43 | SCREW, Cap, 3/4 X 3-1/2 | 8 |
| 6 | 41840-8 | NUT, Lock, 3/4 | 8 |
| 7 | 42672-20 | SCREW, Cap, 18mm-1.5 x 60mm | 8 |

GENERAL TORQUE SPECIFICATIONS

USE THE FOLLOWING TORQUES WHEN SPECIAL TORQUES ARE NOT GIVEN

Standard American and Metric Cap Screws

| AMERICAN STANDARD CAP SCREWS | | | | | | | | | METRIC CAP SCREWS | | | | | | | | |
|------------------------------|---|------|------|------|---|-----|------|------|--|---|------|------|------|---|------|------|------|
| SAE Grade | 5 | | | | 8 | | | | Metric Class | 8.8 | | | | 10.9 | | | |
| Typ. Head Markings |  | | | |  | | | | Typ. Head Markings |  | | | |  | | | |
| Cap Screw | TORQUE | | | | TORQUE | | | | Cap Screw | TORQUE | | | | TORQUE | | | |
| Size | FT-LBS | | N-m | | FT-LBS | | N-m | | Size | FT-LBS | | N-m | | FT-LBS | | N-m | |
| Inches | MIN | MAX | MIN | MAX | MIN | MAX | MIN | MAX | Millimeters | MIN | MAX | MIN | MAX | MIN | MAX | MIN | MAX |
| 1/4 - 20 | 6.25 | 7.25 | 8.5 | 10 | 8.25 | 9.5 | 11 | 13 | M6 x 1.00 | 6 | 8 | 8 | 11 | 9 | 11 | 12 | 15 |
| 1/4 - 28 | 8 | 9 | 11 | 12 | 10.5 | 12 | 14 | 16 | M8 x 1.25 | 16 | 20 | 21.5 | 27 | 23 | 27 | 31 | 36.5 |
| 5/16 - 18 | 14 | 15 | 19 | 20 | 18.5 | 20 | 25 | 27 | M10 x 1.50 | 29 | 35 | 39 | 47 | 42 | 52 | 57 | 70 |
| 5/16 - 24 | 17.5 | 19 | 23 | 26 | 23 | 25 | 31 | 34 | M12 x 1.75 | 52 | 62 | 70 | 84 | 75 | 91 | 102 | 123 |
| 3/8 - 16 | 26 | 28 | 35 | 38 | 35 | 37 | 47.5 | 50 | M14 x 2.00 | 85 | 103 | 115 | 139 | 120 | 146 | 163 | 198 |
| 3/8 - 24 | 31 | 34 | 42 | 46 | 41 | 45 | 55.5 | 61 | M16 x 2.50 | 130 | 158 | 176 | 214 | 176 | 216 | 238 | 293 |
| 7/16 - 14 | 41 | 45 | 55.5 | 61 | 55 | 60 | 74.5 | 81 | M18 x 2.50 | 172 | 210 | 233 | 284 | 240 | 294 | 325 | 398 |
| 7/16 - 20 | 51 | 55 | 69 | 74.5 | 68 | 75 | 92 | 102 | M20 x 2.50 | 247 | 301 | 335 | 408 | 343 | 426 | 465 | 577 |
| 1/2 - 13 | 65 | 72 | 88 | 97.5 | 86 | 96 | 116 | 130 | M22 x 2.50 | 332 | 404 | 450 | 547 | 472 | 576 | 639 | 780 |
| 1/2 - 20 | 76 | 84 | 103 | 114 | 102 | 112 | 138 | 152 | M24 x 3.00 | 423 | 517 | 573 | 700 | 599 | 732 | 812 | 992 |
| 9/16 - 12 | 95 | 105 | 129 | 142 | 127 | 140 | 172 | 190 | M27 x 3.00 | 637 | 779 | 863 | 1055 | 898 | 1098 | 1217 | 1488 |
| 9/16 - 18 | 111 | 123 | 150 | 167 | 148 | 164 | 200 | 222 | M30 x 3.00 | 872 | 1066 | 1181 | 1444 | 1224 | 1496 | 1658 | 2027 |
| 5/8 - 11 | 126 | 139 | 171 | 188 | 168 | 185 | 228 | 251 | <p>NOTE: These values apply to fasteners as received from supplier, dry or when lubricated with normal engine oil. They do not apply if special graphite or moly sulphide greases or other extreme lubricants are used.</p> | | | | | | | | |
| 5/8 - 18 | 152 | 168 | 206 | 228 | 203 | 224 | 275 | 304 | | | | | | | | | |
| 3/4 - 10 | 238 | 262 | 322 | 355 | 318 | 350 | 431 | 474 | | | | | | | | | |
| 3/4 - 16 | 274 | 305 | 371 | 409 | 365 | 402 | 495 | 544 | | | | | | | | | |
| 7/8 - 9 | 350 | 386 | 474 | 523 | 466 | 515 | 631 | 698 | | | | | | | | | |
| 7/8 - 14 | 407 | 448 | 551 | 607 | 543 | 597 | 736 | 809 | | | | | | | | | |
| 1 - 8 | 537 | 592 | 728 | 802 | 716 | 790 | 970 | 1070 | | | | | | | | | |
| 1 - 14 | 670 | 740 | 908 | 1003 | 894 | 987 | 1211 | 1337 | | | | | | | | | |

INSTALLATION INSTRUCTIONS