

|                             |
|-----------------------------|
| Keep with Operator's Manual |
|-----------------------------|

## LOADER MOUNTING KIT NEW HOLLAND 7310 LOADER NEW HOLLAND TT75 TRACTOR

| MODEL | 2WD | FWA | ROPS | CAB |
|-------|-----|-----|------|-----|
| TT75  | X   | X   | X    |     |

### TRACTOR AND MOUNTING KIT GENERAL INFORMATION

Mounting kit can be installed on tractor using tools ordinarily available, including a hoist capable of lifting and supporting loader for initial mounting, additional tractor hydraulic fluid, a 16mm-1.5 metric thread tap, a thin-wall 24mm socket, standard and metric wrenches, and a torque wrench.

Valve and plumbing kit 715843026 (2-7158) is required to plumb loader to tractor and contains loader control valve and all necessary hoses, sleeves, fittings, and straps required to plumb loader and control valve to tractor hydraulics. It must be installed as part of initial loader mounting, but after loader mounting brackets have been installed. Refer to instructions contained in assembly manual provided with valve and plumbing kit.

If optional grille guard 715826006 (2-7177) is to be installed, it may be installed before or after installing mounting brackets or mounting loader. Refer to instructions provided with grille guard.

Mounting kit is not compatible with front weight bracket and suitcase weights. Remove suitcase weights and front weight bracket before installing loader mounting brackets.

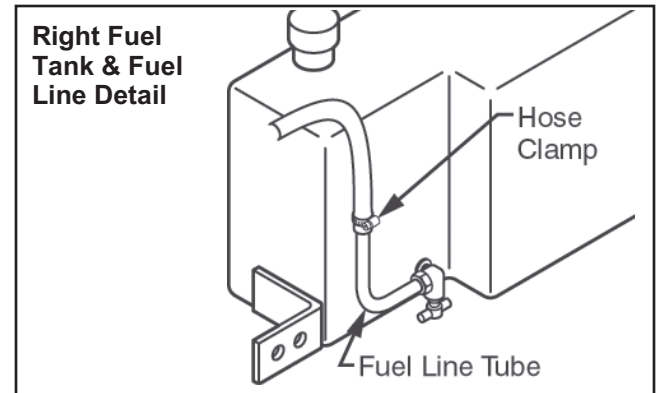
Narrowest tread setting of 59" on FWA tractors is not compatible with loader installation due to tire interference. Set tractor tread width to avoid interference with loader. Check tire clearances once loader is installed and adjust tire tread width as necessary.

### PREPARING TRACTOR FOR LOADER MOUNTING BRACKET INSTALLATION

Shut off tractor engine and engage brakes during installation.

Remove plastic thread protectors from threaded holes in tractor clutch casting and use a 16mm-1.5 tap to clean out threads. Remove plastic thread protectors from holes in front of tractor casting and use 3/4-1 thread tap to clean out holes.

Check location of fuel line tube on shutoff valve located at front inside corner of fuel tank. Turn tube to vertical position so it will clear loader mounting bracket. Hose clamp may need to be turned to clear loader mounting bracket. (See right fuel tank and fuel line detail, above.)



### INSTALLING LOADER MOUNTING BRACKETS (Figure 1)

**NOTE:** Install all attaching hardware loosely (unless noted otherwise) until mounting kit is completely assembled to facilitate assembly and proper alignment.

**NOTE:** Some TT series tractors were produced without enough space between tractor platform and right upper clutch casting mounting pad to install loader right mid mounting bracket. If tractor platform has been notched, providing ample space to install right mid mounting bracket, proceed to instruction 2 below.

1. Remove plastic grommet, which secures floor mat to tractor platform at inside corner nearest right clutch mounting pad (see figure 1A). Peel back floor mat at front inside corner of right platform. Temporarily remove hardware securing accelerator pivot. Mark platform steel to remove a 1/2" x 4-1/2" strip along clutch casting mounting pad. Remove steel along marked surface. If using a torch to cut platform, protect fuel hoses and rubber mat by covering them with wet rags while cutting. Reassemble accelerator pivot when finished.
2. Fasten front mounting bracket (3), with longer flange of channel to top, to front of tractor using 3/4-10 x 1-1/2" cap screws (9) and lock washers (10). Torque hardware to 262 ft.·lbs.

**NOTE:** On FWA tractors, temporarily remove driveshaft shield (6 bolts) to ease installation of mid mounting brackets.

## INSTALLING LOADER MOUNTING BRACKETS (Continued)

- Left mid mounting: remove and discard two 16mm cap screws and flat washers which fasten fuel tank to left side of tractor clutch casting. Move wiring harness away from top mounting pad. Use overhead hoist to raise left mid mounting bracket (1) and slide into place. Attach left mid mounting bracket (1) to left side of tractor transmission casting using 16mm-1.5 x 40mm cap screws (5), and 5/8" lock washers (8) in upper two holes, and two 16mm-1.5 x 60mm cap screws (6) and 5/8" lock washers (8) in lower holes. (Installation of lower rear cap screw (6) requires thin-wall 24mm socket). Fasten bottom of left mid mounting bracket (1) to underside of tractor using one 16mm-1.5 x 40mm cap screw (5), 5/8" flat washer, and 5/8" lock washer (8). Torque hardware to 142 ft.·lbs.
- Right mid mounting: remove and discard two 16mm cap screws and flat washers which fasten fuel tank to right side of tractor clutch casting. Use overhead hoist to raise right mid mounting bracket (2) and slide right mid mounting bracket (2) into place over fuel tank bracket, checking to make sure there is clearance between fuel tank shutoff valve and mid mounting bracket (2). Fuel tank valve may need to be adjusted to attain clearance. Fasten right mid mounting bracket (2) to right side of tractor using 16mm-1.5 x 40mm cap screws (5) and 5/8" lock washers (8) in upper holes and 16mm x 60mm cap screws (6) and 5/8" lock washers (8) in lower holes. (Installation of lower rear cap screw (6) requires thin-wall 24mm socket). Fasten bottom of right mid mounting bracket (2) to underside of tractor using one 16mm-1.5 x 40mm cap screw (5), 5/8" flat washer (7), and 5/8" lock washer (8). Torque hardware to 142 ft.·lbs.

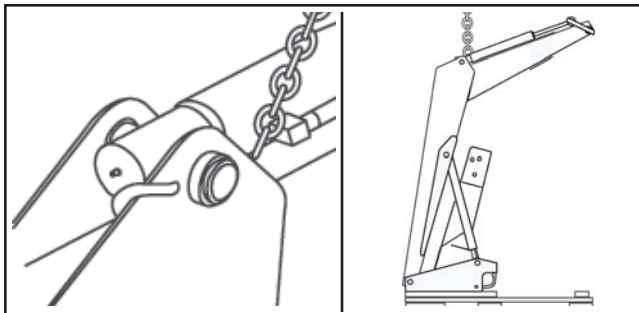
**NOTE:** On FWA tractors, reinstall driveshaft shield.

## INSTALLING LOADER ONTO MOUNTING BRACKETS



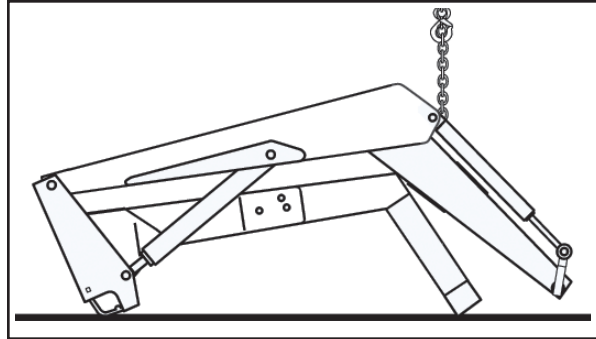
**WARNING:** To avoid injury during installation of quick attach loader, do not admit bystanders within ten feet of loader.

- Loop chain under each tilt cylinder and hook on loader boom arm. Using overhead hoist to support loader, remove hardware which secures loader to pallet. Lift loader and remove pallet.



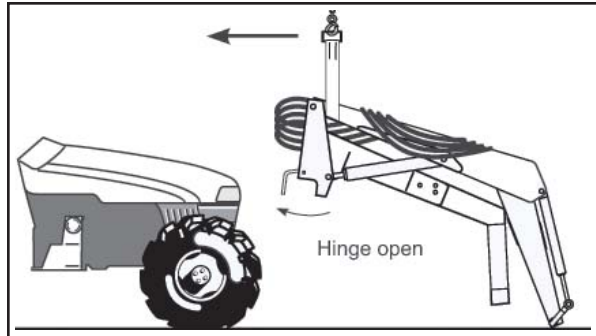
**CAUTION:** Do not damage grease fitting on end of cylinder. Be sure chain does not pinch tilt cylinder hose.

- Using overhead hoist, lower loader from vertical shipping position to horizontal, leaving enough room to install yoke (4). Use scraps of cardboard to protect paint. Fasten yoke (4) to loader side frames using 3/4-10 x 2-1/2" cap screws (11) and 3/4" lock nuts (12). Lower loader completely to ground.



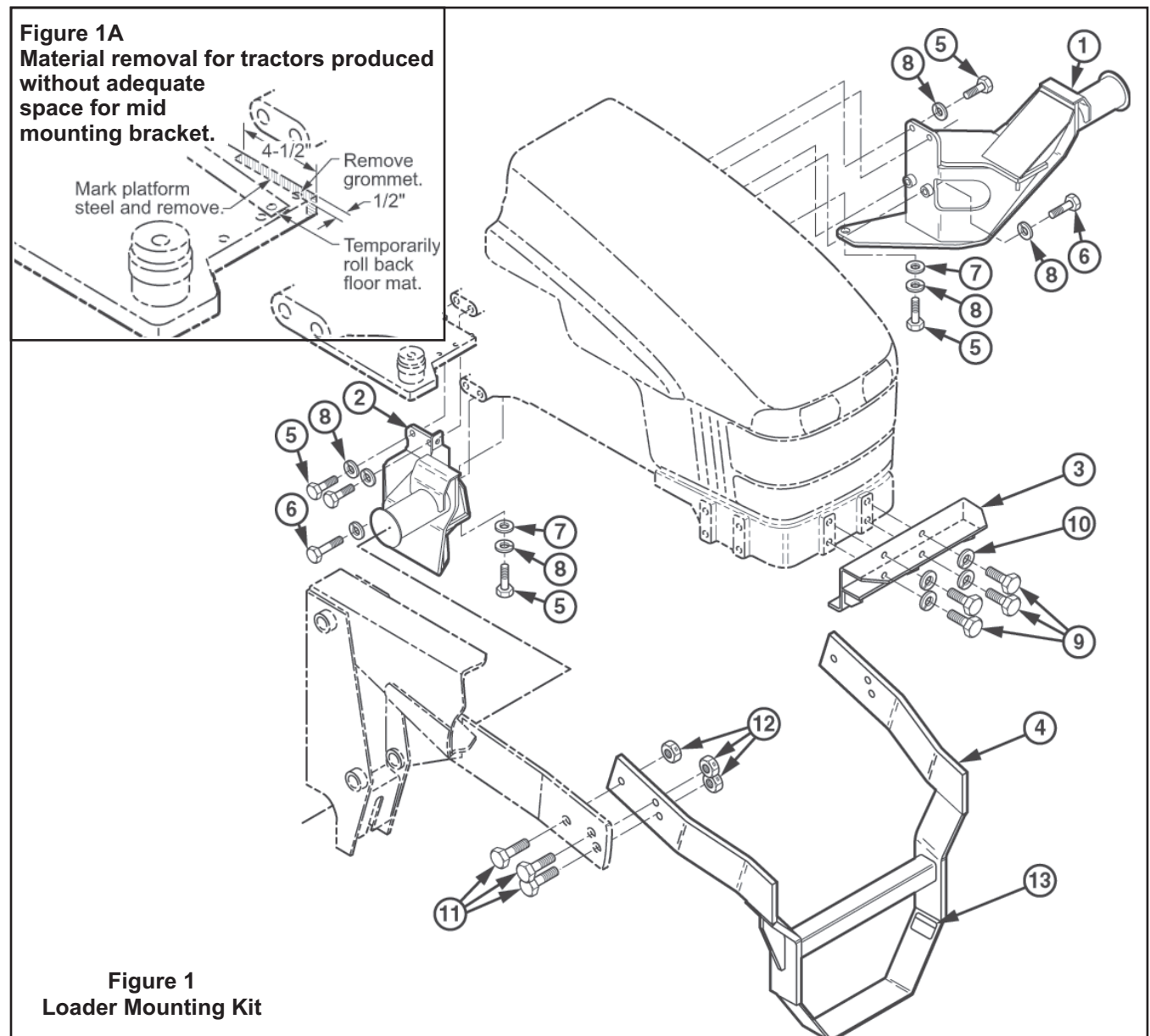
**NOTE:** Snug hardware connecting yoke to loader side frames, but do not torque completely. After loader has been mounted to tractor and aligned with mid mounting brackets and front mounting brackets, torque hardware to 262 ft.·lbs.

- Install hose or valve kit to tractor and loader. Refer to assembly instructions provided with hose or valve kit for instructions.



- Using nylon straps, reposition overhead hoist to loader boom arm near pivot point of side frames. Raise rear of loader until side frames clear tractor front tires. Position tractor close enough so hoses from loader can be connected to loader control valve on tractor. Shut off tractor engine and engage tractor brakes. Connect hoses from loader to loader control valve following color code sequence between hoses and control valve.
- Start tractor engine and operate loader control valve to extend lift cylinders until yoke is resting on ground and side frame uprights will clear front tires. Shut off tractor engine and engage tractor brakes. Temporarily remove lock nut and washer from each loader hinge to swing each hinge open.

**NOTE:** Hinge needs to swing freely. Adjust if necessary.



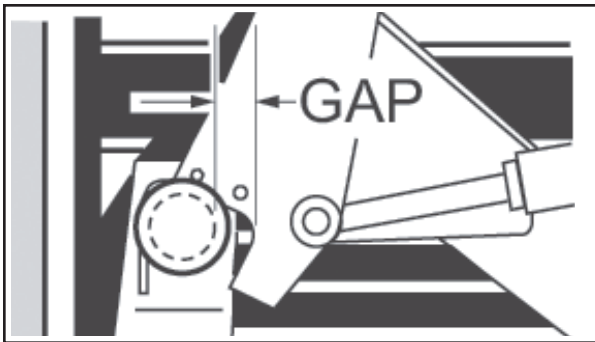
## PARTS LIST – MOUNTING KIT

| Item | SMC No.  | NH No.     | Description                            | Qty. |
|------|----------|------------|--|------|
| 1    | 51580    | SML51580   | BRACKET, Mid Mounting, Left            | 1    |
| 2    | 51581    | SML51581   | BRACKET, Mid Mounting, Right           | 1    |
| 3    | 51560    | SML51560   | BRACKET, Front Mounting                | 1    |
| 4    | 51582    | SML51582   | YOKE, Loader Front, with decals        | 1    |
| 5    | 42672-35 | SML4267235 | SCREW, Cap, 16mm-1.5 x 40mm, Class 8.8 | 6    |
| 6    | 42672-70 | SML4267270 | SCREW, Cap, 16mm-1.5 x 60mm, Class 8.8 | 4    |
| 7    | 42502-32 | 80299      | WASHER, Flat, 5/8"                     | 2    |
| 8    | 41837-7  | 84057      | WASHER, Lock, 5/8"                     | 10   |
| 9    | 41838-30 | 88725      | SCREW, Cap, 3/4-10x 1-3/4", Grade 5    | 4    |
| 10   | 41837-8  | 87340      | WASHER, Lock, 3/4"                     | 4    |
| 11   | 41838-7  | 9706701    | SCREW, Cap, 3/4-10 x 2-1/2", Grade 5   | 6    |
| 12   | 41480-8  | 280375     | NUT, Lock, 3/4-10, Type N, Grade 5     | 6    |
| 13   | 39240    | 86582430   | DECAL, WARNING, Do Not Tow             | 2    |

## INSTALLING LOADER ONTO MOUNTING BRACKETS (Continued)

- Start tractor engine, release tractor brakes and slowly drive tractor forward while operating lift control levers to retract lift cylinders. Position loader so hinges hook over mid mounting tubes. Use of overhead hoist will facilitate positioning loader onto mid mounting tubes.

**IMPORTANT:** Position loader uprights so mid mounting tubes are tight against hinges until loader has finished rotating so loader front yoke tube does not hit lower flange of front mounting bracket (3).



- With tractor in neutral, retract lift cylinders, bringing side frame up so yoke tube contacts upper flange of front mounting bracket channel. Move tractor ahead until front yoke tube engages in front mounting channel and upright hinges can clamp around mid mounting tube. Engage tractor brakes and shut off tractor engine.

- Clamp hinges to mid mounting tubes with 3/4" flat washers and 3/4" flex-lock nuts (supplied with loader).

**IMPORTANT:** Be sure to use flex-lock nuts to clamp hinge. Tighten flex-lock nuts against hinge securely, but not to more than 125 ft.·lb. torque.

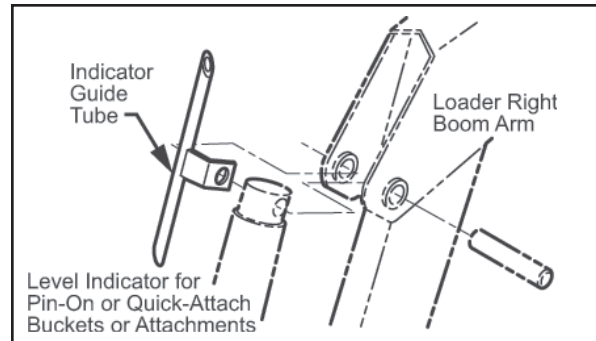
- Adjust front wheel tread setting or steering stops, if necessary, to prevent interference between tires and loader. Refer to tractor operator's manual for adjustment procedures.

## INSTALLING BUCKET OR OPTIONAL ATTACHMENT

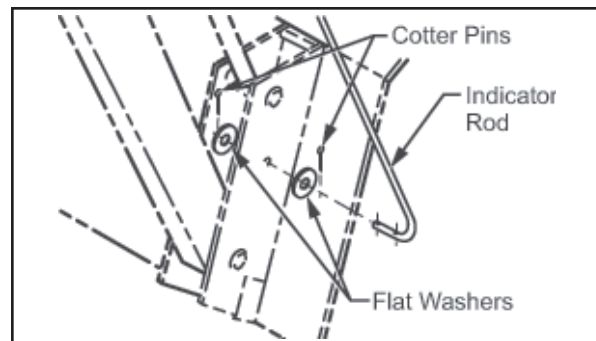
Refer to loader operator's manual for instructions to install bucket or optional attachment.

## INSTALLING LEVEL INDICATOR

- Attach indicator guide tube to cylinder pin. Position guide tube to outside of boom.



- Slide level indicator rod through guide tube. Attach other end of rod with 1/8 x 1" cotter pins and 3/8" flat washers. If pin-on attachment is used, attach lower end of rod to attachment ear. If quick-attach device is used, attach lower end of rod to quick-attach device.



- Locate tractor and loader on level surface. With bottom of attachment resting on surface, cut off excess rod flush with end of guide tube or paint exposed rod a contrasting color.

# INSTALLATION INSTRUCTIONS