

TWO FUNCTION HOSE KIT TO TRACTOR MID REMOTE VALVE 5211 LOADER KUBOTA TRACTORS

MODEL	2WD	FWA	ROPS	CAB
M8200	X	X	X	X
M9000	X	X	X	X

HOSE KIT GENERAL INFORMATION

Hose kit can be installed on tractor and loader using tools ordinarily available.

Reference to left and right used in these instructions refer to position when seated in the operating position on tractor. Shut off engine and engage brakes during installation.

Kubota K660M00 (ROPS) Valve Kit (M1271) or Kubota K862M50 (Cab) Valve Kit (M1281) is required.

IMPORTANT: Check for proper tractor valve operation before plumbing loader to tractor. See tractor operator's manual for instructions.

NOTE: Apply sealant only to all tapered threads unless coupled with swivel adapters. When using teflon tape, wrap tape clockwise (as viewed from end) and wrap only twice. Keep sealant away from first two threads of tapered end to prevent contamination of hydraulic fluid. Do not use sealant on o-ring or flare adapter fittings.



WARNING: Escaping fluid under pressure can penetrate skin causing serious personal injury.

- Do not use your hands to check for leaks. Use a piece of cardboard or paper. Always wear eye protection when searching for leaks.
- Stop engine and relieve pressure before connecting and disconnecting lines.
- Tighten all connections before starting engine or pressurizing lines.

If any fluid is injected into skin, obtain medical attention immediately or gangrene may result.

INSTALLING PLUMBING KIT (Figure 1 & 2)

1. Set up valve assembly according to Kubota Valve Kit instruction sheet.

2. **FOR CAB TRACTORS** - Attach valve assembly to outside of right side mid mount using 1/2-13 cap screws (15) and 1/2" lock nuts 918).

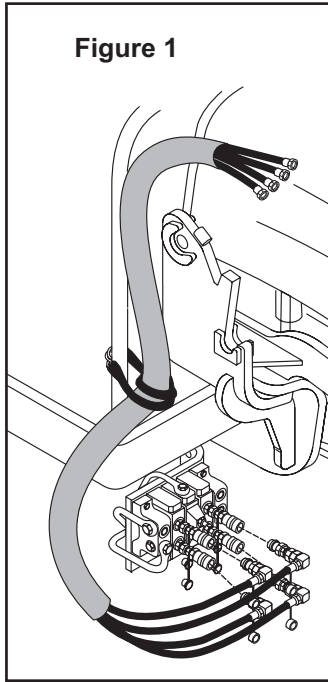
FOR ROPS TRACTORS - Attach valve plate or valve assembly to inside of right side mid mount using 3/8-16 x 1.75 cap screws (16) and 3/8-16 lock nuts (17).

3. Install colored dust plugs (5-8) to female couplers (2) with colors as illustrated in figure 2.

NOTE: It is important to make sure color coding corresponds between dust caps and spiral bands on each hose.

4. Slide nylon sleeve (3) over 3/8 x 54" hoses (1) and install hoses to steel oil lines on loader in sequence shown in Figure 2. Hose with blue coding attaches to bucket cylinder base. Hose with red coding attaches to bucket cylinder rod. Hose with yellow coding attaches to lift cylinder rod. Hose with green coding attaches to lift cylinder base.
6. During loader installation, attach loader hoses with female couplers and colored dust plugs to male couplers on valve (refer to Kubota instructions). Attach dust caps to dust plugs.
6. Route hoses (1) between cab and mid mount as illustrated in figure 2. Bundle hoses together and secure with tarp strap (4) to avoid interference with moving parts as necessary. Tarp strap hooks are located in parts bag.
7. Remove Kubota cover plate and loosen cables. Route cables through step grate and refasten to valve.
8. Remove Kubota couplers and replace with male couplers (20).
9. Attach hydraulic cover plate (19) using 5/16 x 3.4 cap screws (14) and 5/16 lock washers (13).
10. After plumbing and loader installation has been completed, slowly cycle lift and bucket cylinders several times to purge air from hydraulic system. Retract cylinders and shut off engine. Add additional tractor hydraulic fluid as specified in tractor operator's manual to bring fluid level up to full.

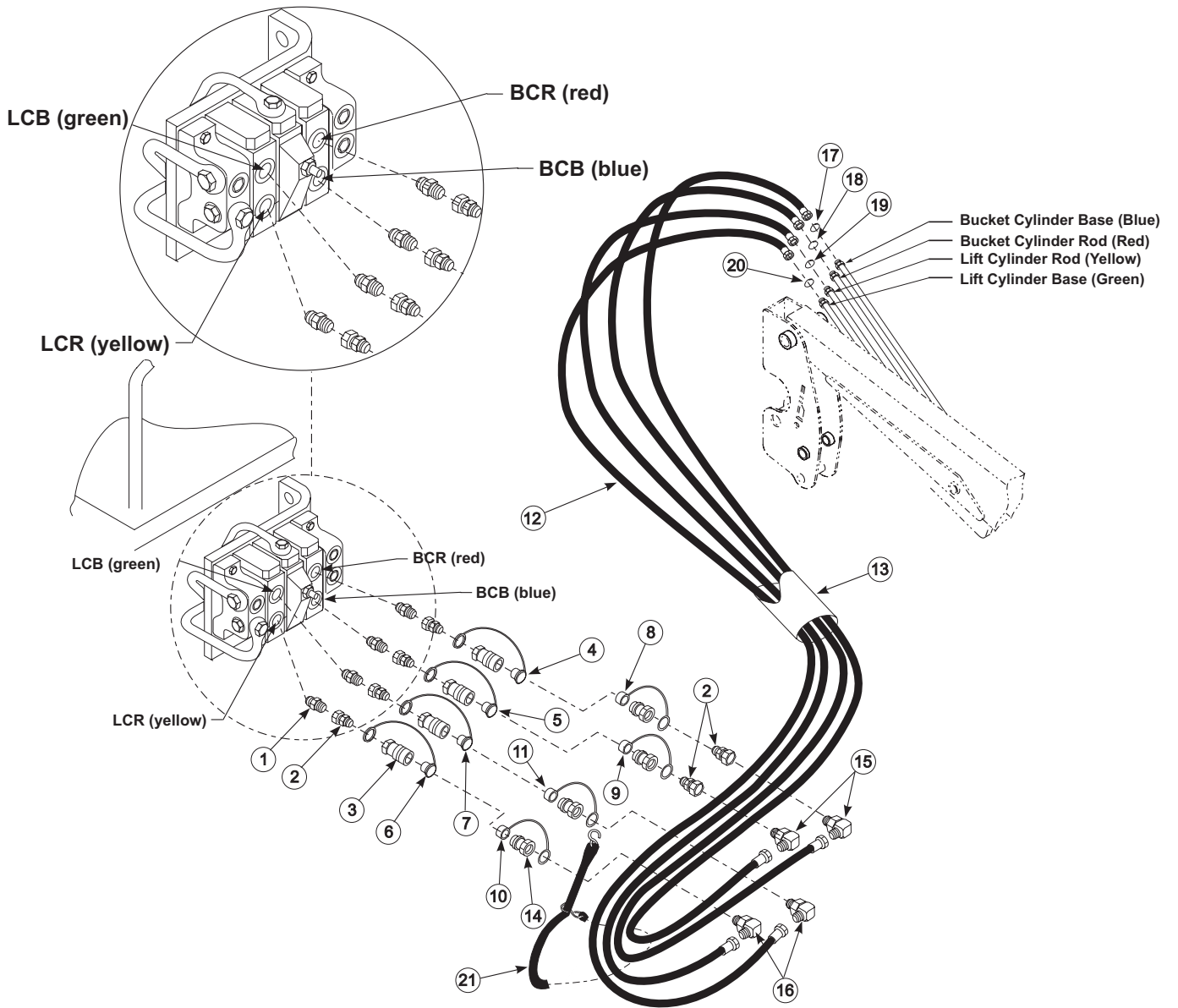
NOTE: When cycling loader, operate loader according to operation decal for valve. If direction of control lever is wrong, or loader will not lower, recheck connections.



PARTS LIST - PLUMBING KIT

ITEM	SMC NO.	DESCRIPTION	QTY.
1	47579-6	HOSE, 3/8 x 54"	4
2	6147-10	COUPLER, Female, Quick	4
3	34853-46	SLEEVE, Nylon, 2.06 x 48"	1
4	7438-1	TARP STRAP	1
5	4838-8	DUST PLUG, Blue	1
6	4838-9	DUST PLUG, Red	1
7	4838-10	DUST PLUG, Yellow	1
8	4838-3	DUST PLUG, Green	1
9	36240-5	SPIRAL BAND, Plastic, Blue, .62	1
10	36240-6	SPIRAL BAND, Plastic, Red, .62	1
11	36240-7	SPIRAL BAND, Plastic, Yellow, .62	1
12	36240-8	SPIRAL BAND, Plastic, Green, .62	1
13	41837-2	WASHER, Lock, 5/16"	2
14	41838-26	SCREW, Cap, 5/16-18 x 3/4"	2
15	41838-47	SCREW, Cap, 1/2-13 x 1"	2
16	41838-5	SCREW, Cap, 3/8-16 x 1-3/4"	3
17	41840-3	NUT, Lock, 3/8-16	3
18	41840-5	NUT, Lock, 1/2-13	2
19	50460	VALVE COVER ASSEMBLY	1
20	6137-6	COUPLER, Male, Quick	4

Figure 2
Plumbing Kit



INSTALLATION INSTRUCTIONS