

Keep With Loader Operator's Manual

LOADER MOUNTING KIT INSTRUCTIONS

SMC & RHINO 2410 NEW HOLLAND TRACTORS

MODEL	2WD	4WD	LESS CAB	WITH CAB
4835	X	X	X	X
5635	X	X	X	X
6635	X	X	X	X
7635	X	X	X	X
TL90	X	X	X	X
TL100	X	X	X	X

Mounting brackets can be installed using tools ordinarily available

PREPARING TRACTOR

1. If tractor is equipped with front weights and bracket, they must be removed before installing mounting brackets. Remove front fenders from mounting angles.

NOTE: Do not remove fender mounting angle from tractor front axle.

2. Check tire clearances once loader is installed and adjust tread width if necessary (minimum tread width is 64" with 14.9 x 24 front tires).
3. After loader is installed, adjust steering stops if necessary to prevent interference between tires and loader.
4. Shut off tractor engine and engage tractor brakes during installation.

NOTE: Leave all attaching hardware loose until mounting brackets are completely assembled to facilitate assembly and proper alignment unless otherwise instructed. Tighten all hardware to torque specifications in loader operators manual.

NOTE: If installing optional grille guard (716331001), install grille guard and front mounting bracket at the same time.

INSTALLING MOUNTING BRACKETS (Figure 1 &1A)

FRONT MOUNTING BRACKET

1. Fasten front mounting bracket (1), with longer flange on top, to tractor front casting using 18MM x 60MM cap screws (7) and 3/4 lock washers (8) in front holes and 18MM x 60MM cap screws (7), 3/4 lock washers (8) and 3/4 flat washers (9) in side holes.

NOTE: If installing grille guard, install loader mounting kit and grille guard at the same time. Refer to grille guard instruction sheet for installation instructions.

2-7011

INSTALLING MOUNTING BRACKETS

(Figure 1 & 1A) (Continued)

RIGHT MID-MOUNTING BRACKET

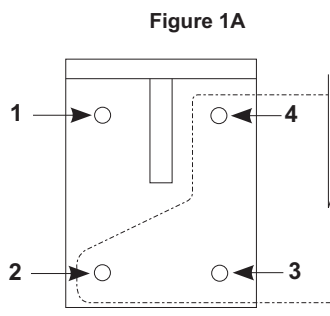
1. Remove existing hardware from right side cab mounting bracket.

NOTE: Tractors equipped with mid mount valve require valve to be temporarily moved to allow installation of mounting and hardware. The cab must be supported during this process by placing a floor jack under right side step.

2. Install right mid-mounting bracket (3) to tractor front casting using 20-2.5MM x 60MM cap screws (7), 7/8 flat washers (9) and 7/8 lock washers (8) in front two holes. Fasten right midmounting bracket to front mounting holes in cab mounting bracket using 16MM x 90MM cap screw (11), 16MM x 120MM cap screw (10) and 5/8 lock washers (14).
3. Fasten right mid-mounting and valve brackets to bottom mounting hole on cab mounting bracket using 16MM x 120MM cap screw (10) and 5/8 lock washer (14). Using hardware and spacer previously removed, assemble valve bracket, spacer and cab bracket to tractor top rear mounting hole.

RIGHT MIDMOUNTING BRACKET (Figure 1 & 1A) (Alternate Procedure)

1. Remove bolts 1,2, and 3, 1-5/8" spacers, and valve.
2. Replace bolt 1 with 1-5/8" spacer, 2-5/8 flat washers (17), and 5/8 lock washer (14) and tighten.



3. Remove bolt 4.
4. Attach right mid-mount (3) to tractor using 20-2.50MM x 60MM cap screws (7), 7/8 flat washers, and 7/8 lock washers (8) in front holes, 16-1.50MM x 90MM cap screws (11) and 5/8 lock washer (14) in hole 4, and 16-1.50MM x 120MM (10) cap screw and 5/8 lock washer (14) in hole 3, and tighten.
5. Remove bolt 1.
6. Attach valve to tractor using 16-150MM x 100MM cap screw (18), 1-5/8 spacer, 2-5/8 flat washers (17), and 5/8 lock washer (14) in hole 1 and 16-1.50 x 120MM cap screw (10) and 5/8 lock washer (14) in hole 2.

LEFT MIDMOUNTING BRACKET

1. Remove steps from left side of tractor.
2. Loosen bands and brackets holding fuel tank on left side of tractor.



CAUTION: Be sure to support fuel tank to insure that tank does not fall off its supports.

3. Remove existing hardware from left side cab mounting bracket.
4. Slide tank away from tractor far enough to install left midmounting bracket (2). Install left midmounting bracket to tractor using same hardware as right mid-mounting bracket.
5. Reinstall fuel tank using original hardware.
6. 6635 and 7635 FWA equipped with 14.9 x 24 front tires only - Install oscillation stops (15 & 16) using 20MM x 40MM cap screws (6) and 7/8 lock washers (8).

PARTS LIST - MOUNTING KIT

ITEM	PART NO.	DESCRIPTION	QTY.
1	43790	BRACKET, Front Mounting	1
2	45860-1	BRACKET, Midmounting, Left	1
3	45860-2	BRACKET, Midmounting, Right	1
4	45855	YOKE Assembly	1
5	39240	DECAL, "WARNING, Do Not Use For Towing"	2
6	6090-67	SCREW, Cap, 20MM-2.5 x 40MM	2
7	6090-70	SCREW, Cap, 20-2.5MM x 60MM	12
8	G131047	WASHER, Lock, 7/8	14
9	G131018	WASHER, Flat, 7/8	8
10	6090-108	SCREW, Cap, 16-1.5MM x 120MM	4
11	6090-114	SCREW, Cap, 16-1.5MM x 90MM	2
12	G9414076	NUT, Lock, 3/4-10	6
13	G271773	SCREW, Cap, 3/4-10 x 2-1/2	6
14	G121574	WASHER, Lock, 5/8	7
15	45254-1	OSCILLATION STOP, Left (not shown)	1
16	45254-2	OSCILLATION STOP, Right	1
17	G131016	WASHER, Flat, 5/8	2
18	6090-13	SCREW, Cap, 16-1.5MM x 100MM	1

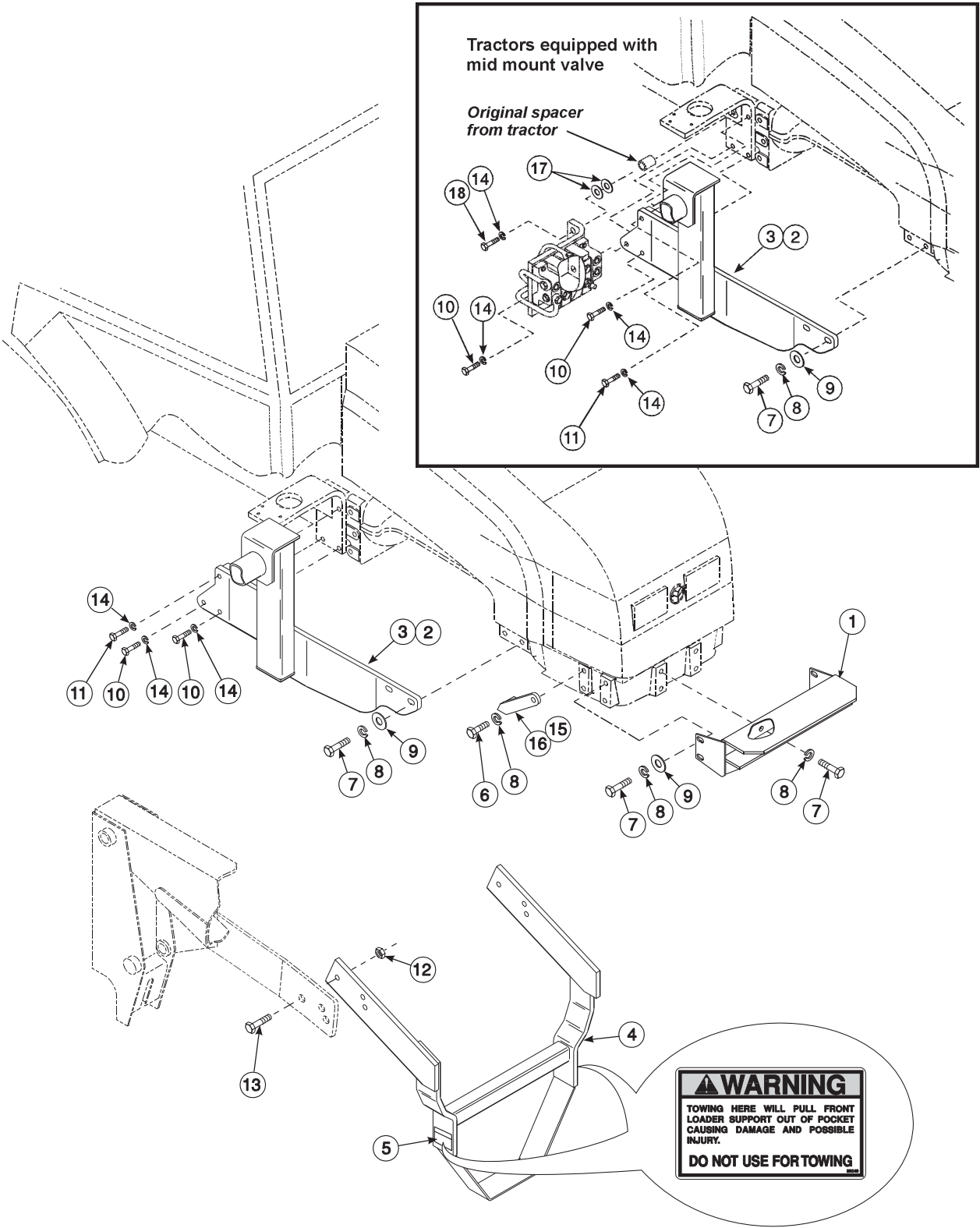


Figure 1
Mount Kit Assembly

2-7011

INSTALLING LOADER TO MOUNTING BRACKETS



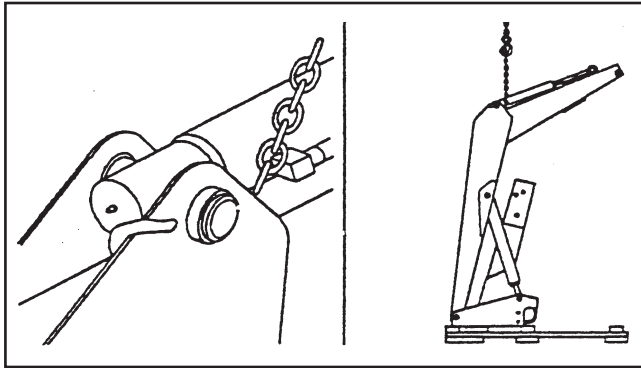
WARNING: To avoid injury during installation of quick attach loader, do not permit bystanders within ten feet of loader.

1. Loop chain under each lift cylinder and hook on loader boom arm. Using overhead hoist to support loader remove hardware securing loader to pallet. Lift loader and remove pallet.

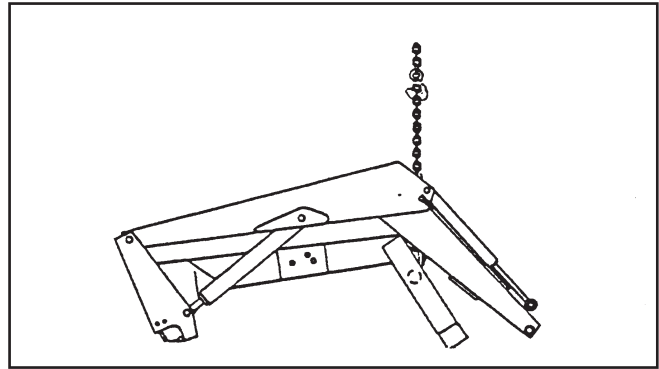


CAUTION: Do not damage grease fitting on end of cylinder. Be sure chain does not pinch lift cylinder hose.

2. Using overhead hoist, lower loader from vertical shipping position to horizontal position leaving



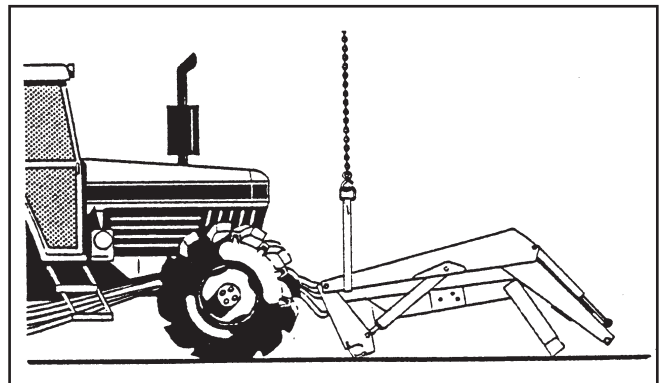
enough room to install yoke (scraps of cardboard may be used to protect paint). Install yoke assembly



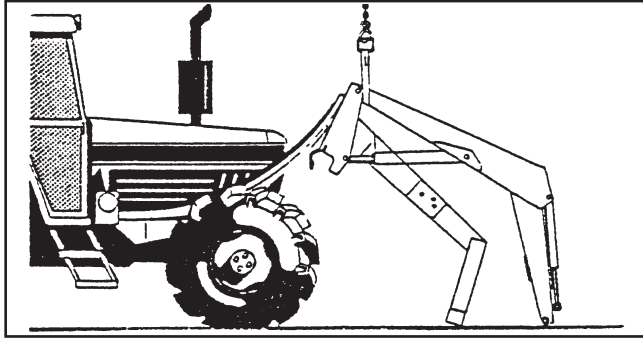
- (4) using $3/4 \times 2-1/2$ cap screws (13) and $3/4$ lock nuts (12). Lower loader completely to the ground.

NOTE: Hardware connecting yoke to loader side-frames should be snug but do not torque completely. After loader has been mounted to tractor and aligned with midmounting brackets and front mounting brackets, torque hardware to specifications in loader operators manual.

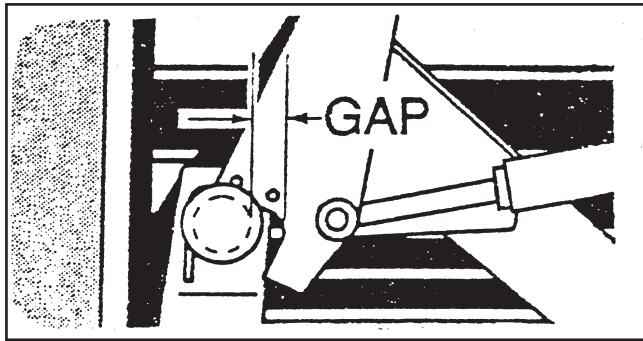
3. Install hose or valve kit to tractor and loader. Refer to assembly manual provided for installation instructions.
4. Position tractor close enough so plumbing can be connected to tractor. Route hoses loosely to allow maximum reach. Using nylon straps reposition overhead hoist to loader boom arms near pivot point to side frames.
5. Operate loader control valve to extend lift cylinders until front yoke is resting on ground and side frame uprights will clear front tires. Shut off tractor engine and engage tractor brakes. Reroute loader hoses to inside of right midmount bracket. Remove locknut and washer from loader hinge and swing each hinge open.



INSTALLING LOADER TO MOUNTING BRACKETS (Continued)



- Start tractor engine, release tractor brakes and slowly drive forward while operating lift control levers to retract lift cylinders. Position loader so hinges hook over mid mounting tubes. Use of overhead hoist will facilitate positioning loader into mid mounting tubes.



IMPORTANT: Position loader uprights so mid mounting tubes are tight against hinges until loader has finished rotating so loader front bumper tube does not hit lower flange of front mounting channel.

- With tractor in neutral, retract lift cylinders, bringing side frame up so front yoke tube contacts upper

flange of front mounting bracket channel. Move tractor ahead until front yoke tube engages in front mounting channel and upright hinges can clamp around mid mounting tube. Engage tractor brakes and shut off tractor engine.

- Clamp hinges to midmounting tubes with 3/4 flat washers and 3/4 flex-lock nuts (supplied with loader).

NOTE: Only one washer per side is necessary for mounting. Second washer is for shipping purposes only.

IMPORTANT: Be sure to use flex-lock nuts to clamp hinge. Tighten flex-lock nuts against hinge securely, but not to more than 125 ft.-lb. torque.

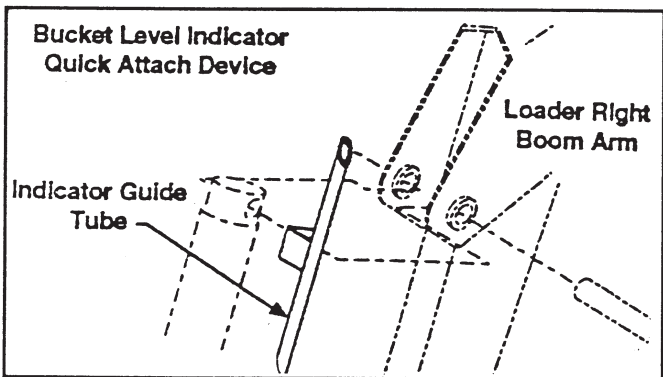
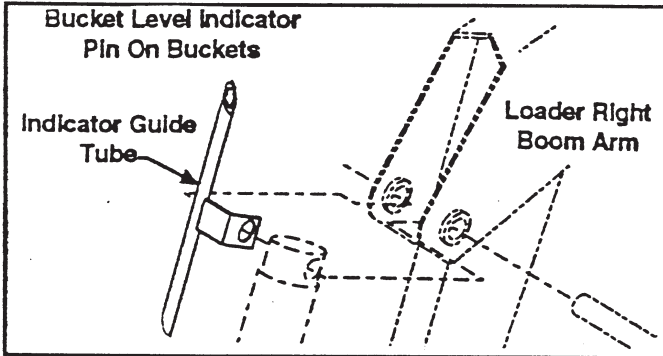
- Adjust front wheel tread settings or steering stops, if necessary to prevent interference between tires and loader. Refer to tractor operator's manual for adjustment procedures.

INSTALLING BUCKET OR OPTIONAL ATTACHMENT

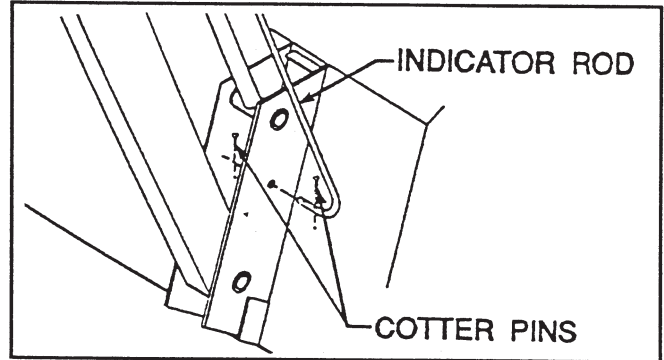
Refer to loader operator's manual for instructions on installing bucket or optional attachment.

INSTALLING BUCKET LEVEL INDICATOR

1. Attach indicator guide tube to cylinder pin. Guide tube is positioned to outside of boom for pin on attachments and inside of boom when quick attach device is used.







2. Slide bucket level indicator rod through guide tube. Attach other end of rod with 1/8 x 1 cotter pins and 3/8 flat washers. If pin on bucket is used, attach lower end of rod to bucket ear. If quick attach device is used, attach lower end of rod to quick attach device.



3. Locate tractor and loader on level surface. With bottom of bucket resting on surface, cut off excess rod flush with end of guide tube or paint exposed rod a contrasting color.

GENERAL TORQUE SPECIFICATIONS

USE THE FOLLOWING TORQUES WHEN SPECIAL TORQUES ARE NOT GIVEN

AMERICAN STANDARD CAP SCREWS					METRIC CAP SCREWS												
SAE Grade	5				8				Metric Class	8.8				10.9			
																	
Cap Screw	TORQUE				TORQUE				Cap Screw	TORQUE				TORQUE			
Size	FT-LBS		Nm		FT-LBS		Nm		Size	FT-LBS		Nm		FT-LBS		Nm	
Inches	MIN	MAX	MIN	MAX	MIN	MAX	MIN	MAX	Millimeters	MIN	MAX	MIN	MAX	MIN	MAX	MIN	MAX
1/4-20	6.25	7.25	8.5	10	8.25	9.5	11	13	M6x100	6	8	8	11	9	11	12	15
1/4-28	8	9	11	12	10.5	12	14	16	M8 x 1.25	16	20	215	27	23	27	31	36.5
5/16 - 18	14	15	19	20	18.5	20	25	27	M10 x 1.50	29	35	39	47	42	52	57	70
5/16 - 24	17.5	19	23	26	23	25	31	34	M12 x 1.75	52	62	70	84	75	91	102	123
3/8 - 16	26	28	35	38	35	37	47.5	50	M14 x 2.00	85	103	115	139	120	146	163	198
3/8 - 24	31	34	42	46	41	45	55.5	61	M16 x 2.50	130	158	176	214	176	216	238	293
7/16 - 14	41	45	55	61	55	60	74.5	81	M18 x 2.50	172	210	233	284	240	294	325	398
7/16 - 20	51	55	69	74	68	75	92	102	M20 x 2.50	247	301	335	408	343	426	465	577
1/2 - 13	65	72	88	97	86	96	116	130	M22 x 2.50	332	404	450	547	472	576	639	780
1/2 - 20	76	84	103	114	102	112	138	152	MM24 x 3.00	423	517	573	700	599	732	812	992
9/16 - 12	95	105	129	142	127	140	172	190	M27 x 3.00	637	779	863	1055	898	1098	1217	1488
9/16 - 18	111	123	150	167	148	164	200	222	M30 x 3.00	872	1066	1181	1444	1224	1496	1658	2027