

Keep with Operators Manual

LOADER MOUNTING KIT
NEW HOLLAND 7210 LOADER
SMC 102QX LOADER
NEW HOLLAND TRACTORS

	2WD	4WD	Less Cab	With Cab
TS90	X		X	X
TS100	X		X	X
TS110	X		X	X

The mounting brackets can be installed using tools ordinarily available. Shut off the tractor engine and engage tractor brakes during installation.



WARNING: *Front axle tread setting must not exceed 76 inches (1.93 meters).*

NOTE: *Leave all attaching hardware loose until loader is completely assembled to facilitate assembly and proper alignment. Torque hardware to torque specifications in loader operator's manual.*

INSTALLING MOUNTING BRACKETS (Figure 2)

1. Fasten front mounting brackets (1 & 2) to front casting using 20MM x 50MM cap screws (12), 20MM lock washers (15) and 7/8 flat washers (23).

NOTE: *If installing weight bracket over front mounting brackets, use 90MM cap screws (13).*

2. Fasten midmounting brackets (3 & 4) to transmission casting using 20MM x 50MM cap screws (12), 20MM lock washers (15) and spacers (7) and front casting using 20MM x 40MM cap screws (21), 20MM lock washers (15) and 7/8 flat washers.

3. With mounting tubes slanting toward back of tractor, loosely fasten crosstie (5) to midmounting brackets (3 & 4) using 3/4 x 5 cap screws (8), crosstie clamp flats (6) and 3/4 lock nuts (11). Crosstie should be centered with tractor and against stops on the underside of midmounting brackets before tightening bolts.

IMPORTANT: *Do not over tighten capscrews (8) and lock nuts (11) and bend flats (6).*

INSTALLING CROSSMEMBER STEP (Figure 1)

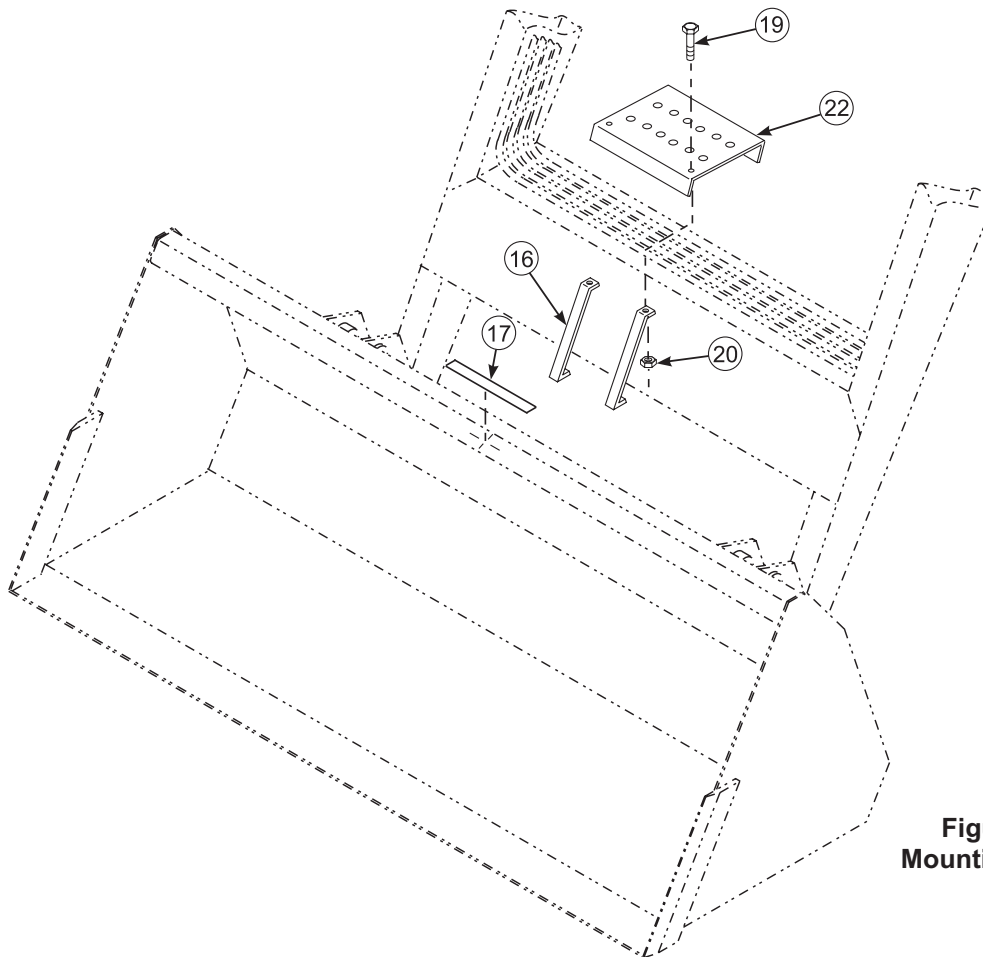
1. Loosely assemble straps (16) to step (22) using 5/16 x 1-1/4 cap screws (19) and 5/16 lock nuts (20). Hook straps (16) under crossmember and position step (22) over oil lines and hook rear flange over crossmember. Tighten hardware.

IMPORTANT: *Be sure step assembly is securely clamped to crossmember.*

2. Peel backing off of adhesive anti-slip surface strip (17) and apply at center/top of bucket.

PARTS LIST - MOUNTING KIT, See Figures 1 & 2

ITEM	SMC NO.	NH NO.	DESCRIPTION	QTY.
1	45934-1	SML459341	BRACKET, Front, Left	1
2	45934-2	SML459342	BRACKET, Front, Right	1
3	46442-1	SML464421	BRACKET, Mid, Left	1
4	46442-2	SML464422	BRACKET, Mid, Right	1
5	39496	SML39496	CROSTIE, Mid Mounting	1
6	36478	SML36478	CLAMP, Flat	2
7	45935	SML45935	SPACER,	2
8	G271783	00088421	SCREW, Cap, 3/4-10 x 5	4
9	40807	SML40807	STEP, Bucket	1
10	40808	SML40808	ANGLE, Step Mounting	1
11	G9414076	09626598	NUT, Lock, 3/4-10	4
12	6090-107	09847023	SCREW, Cap, 20MM-2.5 x 50MM, Class 8.8	14
13	6090-125	00412346	SCREW, Cap, 20MM-2.5 x 90MM	6
14	G271547	00087091	SCREW, Cap, 5/8-11 x 1-1/2	2
15	G11500166	09847025	WASHER, Lock, 20MM	18
16	40594	SML40594	STRAP	2
17	25820-3	SML258203	ANTI SLIP SURFACE	1
18	G9414075	00019670	NUT, Lock, 5/8-11	2
19	G180081	00087657	SCREW, Cap, 5/16-18 x 1-1/4	2
20	G9413447	9635082	NUT, Lock, 5/16	2
21	6090-67	SML609067	SCREW, Cap, 20MM-2.5 x 40MM, Class 8.8	4
22	40596	SML40596	STEP, Crossmember	1
23	G131018	00116150	WASHER, Flat, 7/8	8



**Figure 1
Mounting Step**

NOTE: If tractor is equipped with radar gun, discard spacer (7) and mount bracket (4) over radar gun.

NOTE: If installing weight bracket over front mounting brackets, use 90MM cap screws (13).

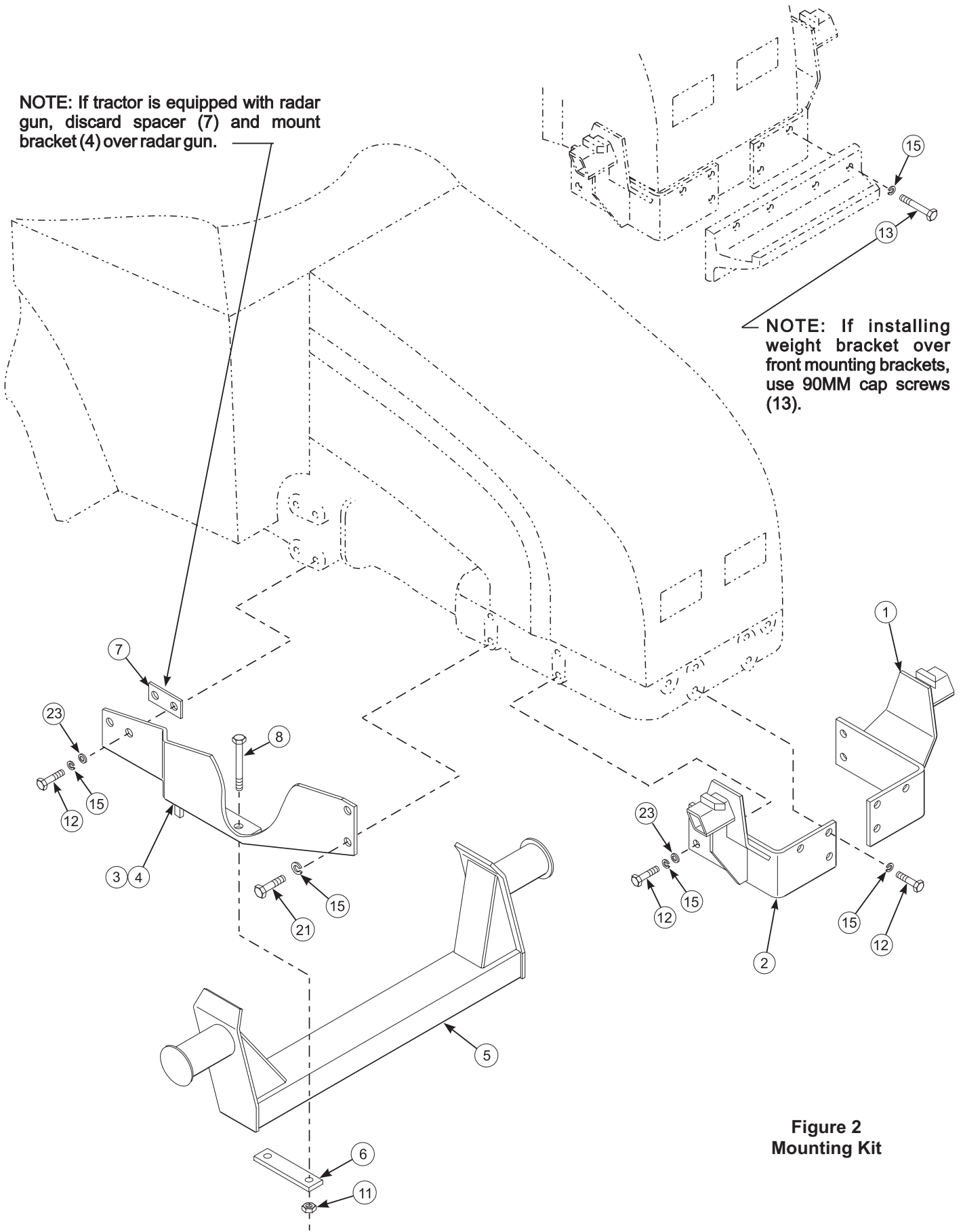


Figure 2
Mounting Kit



WARNING: Loader must be supported before removing hardware securing loader to shipping pallet or loader could tip over.

INSTALLING LOADER ONTO MOUNTING BRACKETS

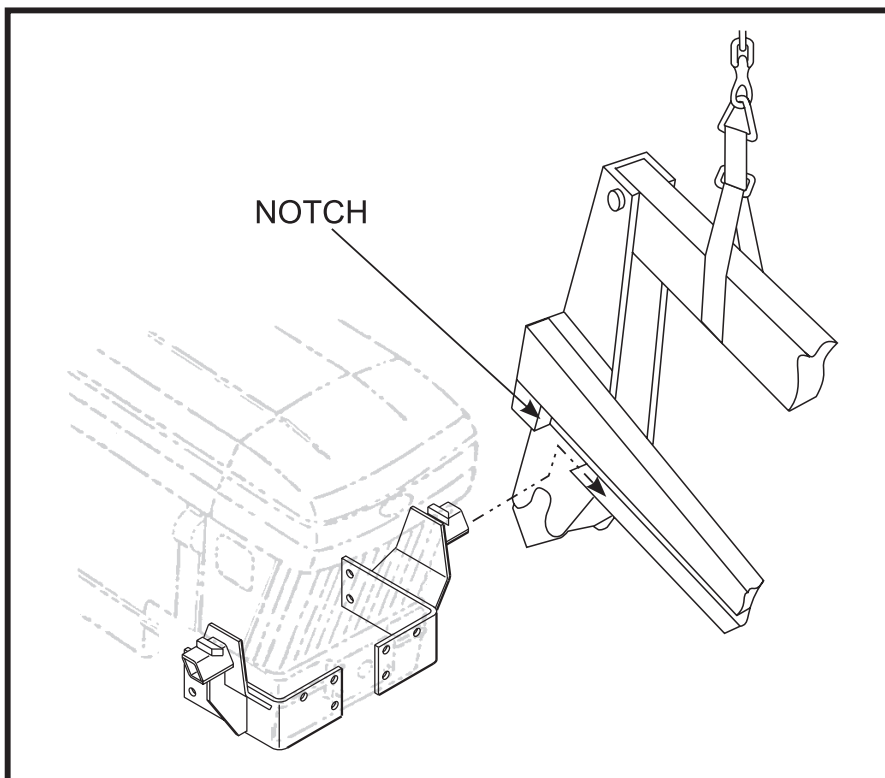
1. Temporarily remove 3/4 x 3 cap screws, nuts and washers which clamp loader hinges shut.
2. Attach nylon slings around front bumper and use overhead hoist to support loader while removing shipping hardware.
3. Use overhead hoist to raise loader off pallet and lower to horizontal position.
4. Attach nylon slings around boom arms and position loader so notches in rear of side frame channels are over front mounting brackets.
5. Lower loader to engage front mounting brackets in side frame channels.

6. Slide the loader to the rear until side frame uprights are over mid mounting tubes.
7. Clamp hinges around midmounting tubes using 3/4 x 3 cap screws, flat washers and lock nuts provided with basic loader.

NOTE: Tighten all hardware, except 3/4 x 5 cap screws (8) and lock nuts (11), to the torque specifications in the loader operator's manual.

INSTALLING PLUMBING KIT

Install plumbing kit to loader and tractor. Refer to instruction sheet packed with plumbing kit for proper procedure.



CAUTION: Make sure both front mountings engage loader side frame channels thru notches provided.

INSTALLING BUCKET STEP

(Refer to illustrations - page 6)

1. Fasten step (9) to back of bucket or bucket ear. Bucket step (9) can be installed at right or left side of bucket depending on operator's preference. Make sure location of bucket step is such that it does not interfere with bucket cylinder or quick attach handles and does not interfere with installation or removal of cylinder pins,

PIN - ON STYLE BUCKETS: 60" buckets, drill one 21/32" hole through bucket 2" in from inner bucket ear and 3" down from bend in back of bucket. For buckets wider than 60", drill one hole at least 6" out from outer bucket ear and 3" down from bend in back of bucket. Drill a second 21/32" hole 1-5/8" away from and level with first. Using anti-rotation angle (10) as a reinforcement plate inside bucket, fasten bucket step (9) and anti-rotation angle (10) to bucket using 5/8 x 1-1/2 cap screws (14) and 5/8 lock nuts (18).

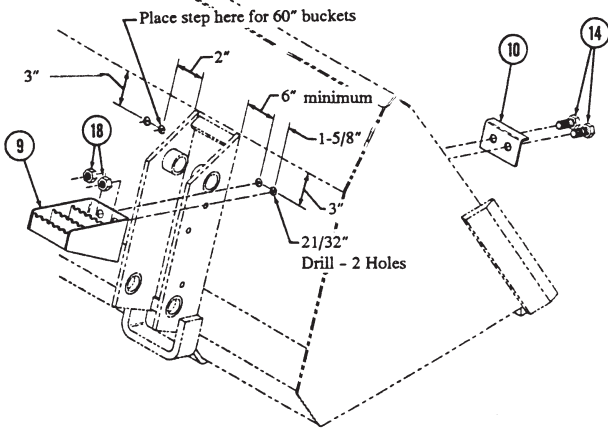
ALTERNATELY: Step can be welded onto top surface of bucket back. Be sure to choose a location where step will not interfere with loader bucket cylinders, or grapple fork, if bucket is so equipped.

QUICK-ATTACH BUCKETS LESS GRAPPLE FORK: Fasten bucket step (9) and anti-rotation angle (10) to top-most square hole in bucket ear using one 5/8 x 1-1/2 cap screw (14) and 5/8 lock nut (18).

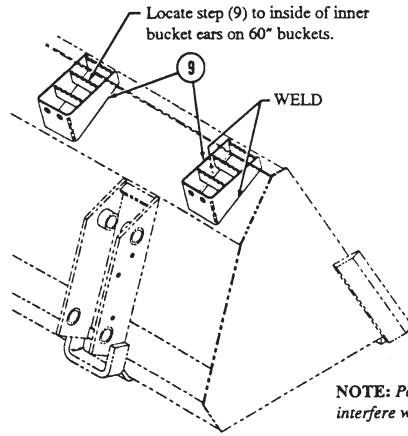
QUICK-ATTACH BUCKETS WITH GRAPPLE FORK: Remove lock nut from top-most carriage bolt which secures grapple fork channel to bucket ear on side where step is to be installed. Place bucket step (9) inside grapple fork channel, and anti-rotation angle (10) as a reinforcement plate inside step. Fasten angle (10) step (9) to grapple fork channel and bucket ear using one 5/8 lock nut (18).

QUICK ATTACH BALE SPEAR: Drill a 21/32 hole in outer ear of bale spear 3" from back of bale spear frame and 1-25/32" down from top. Using anti-rotation angle (10) as a reinforcement plate inside step, fasten angle (10) and step (9) to bale spear ear using 5/8 x 1-1/2 cap screw (14) and 5/8 lock nut (18).

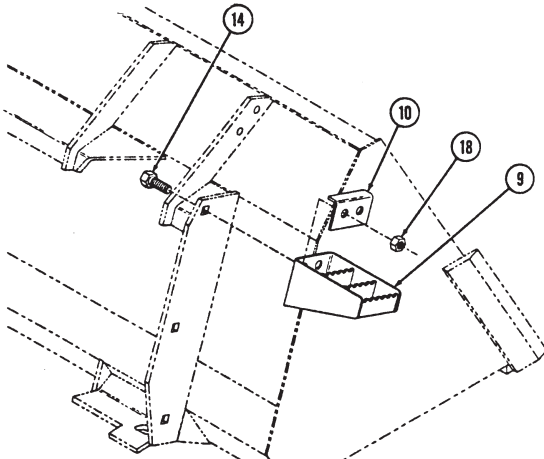
**INSTALLING BUCKET STEP
ON PIN-ON BUCKETS**



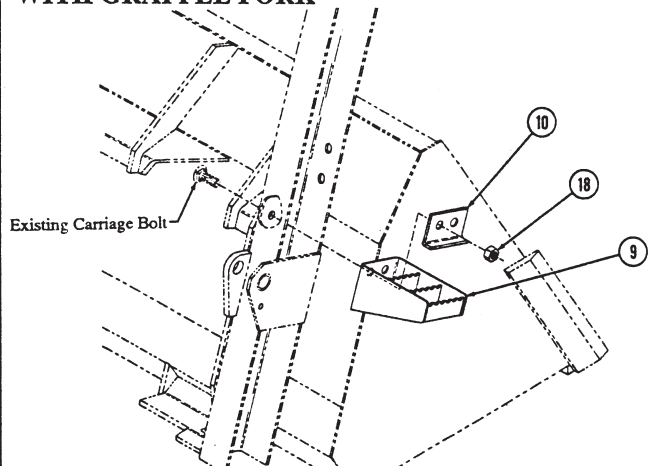
**ALTERNATE INSTALLATION
FOR PIN-ON BUCKETS**



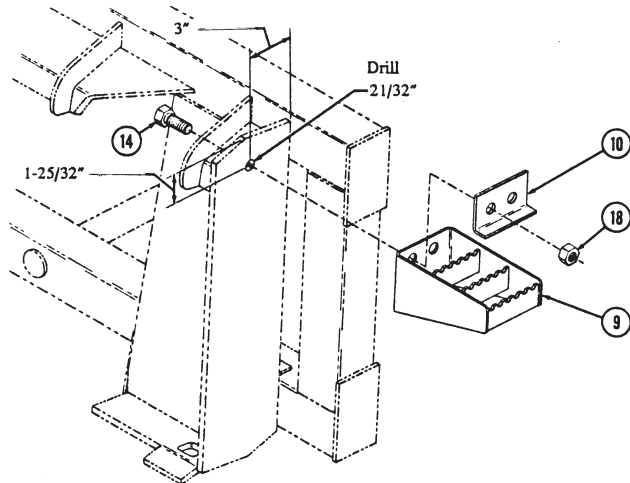
**INSTALLING BUCKET STEP
ON QUICK-ATTACH BUCKETS
LESS GRAPPLE FORK**



**INSTALLING BUCKET STEP
ON QUICK-ATTACH BUCKETS
WITH GRAPPLE FORK**



**INSTALLING BUCKET STEP
ON QUICK-ATTACH BALE SPEAR**



2-6591
2-6979

715788006
715788016

INSTALLATION INSTRUCTIONS