

The mounting brackets can be installed using tools ordinarily available. Shut off the tractor engine and engage tractor brakes during installation.

NOTE: Leave all attaching hardware loose until the loader is completely assembled to facilitate assembly and proper loader alignment. Tighten all hardware to the torques specified by the table in the loader operator's manual, except 3/4-10 x 5-1/2 hex head cap screws (11) and lock nuts (13), which must be tightened to 125 ft.-lbs. of torque.

INSTALLING LOADER MOUNTING BRACKETS

NOTE: For tractors with front headlights mounted on the side of the tractor engine enclosure, remove headlights before installing loader mounting brackets.

1. If the tractor has air conditioning lines with quick couplers in the left mid mount area, it will be necessary to remove and relocate the air conditioning lines and their support bracket. Relocate the largest air conditioning line below the bottom tractor hydraulic line. Use three tie straps (14) to secure the air conditioning coupler to the hydraulic lines, underneath the bottom hydraulic coupler. Temporarily restrain the small air conditioning lines above the tractor upper mid mounting pad.

NOTE: The air conditioning quick couplers may have to be loosened to achieve correct hose orientation.



CAUTION: Avoid contact with leaking coolant and use care to keep coolant from escaping. Although each air conditioning quick coupler has a check valve to prevent leakage when disconnected, they can leak. If air conditioning lines or couplers leak coolant when loosened, reconnect or retighten them and have your dealer pump the coolant from the system before continuing.

2. Fasten right front mounting bracket (2) right side of front tractor casting using 3/4 x 1-1/2 cap screws (8) and lock washers (12). Use identical hardware to fasten left front mounting bracket (1) to the left side of tractor front casting.

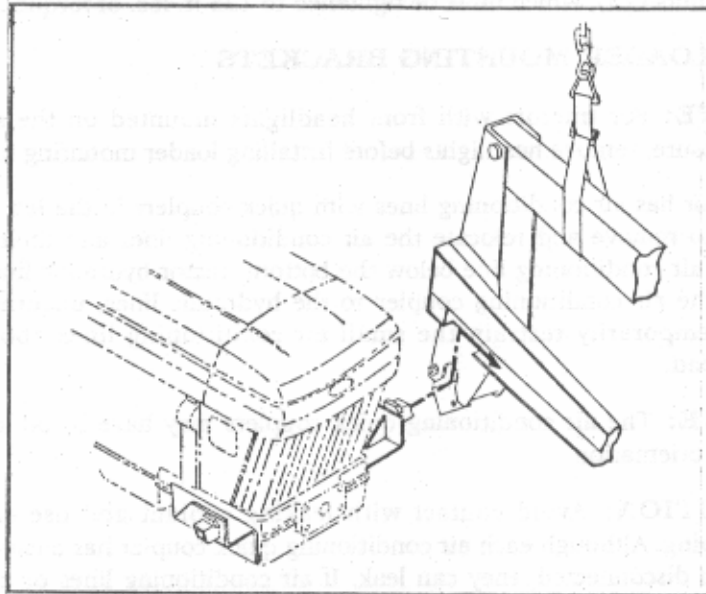
NOTE: Use care in placing the left front mounting assembly to tractor to avoid damaging the hydraulic system cooler. The oil cooler may need to be loosened and turned inward for clearance.

3. Fasten the left mid mounting bracket (3) to the left side of tractor transmission housing using 3/4 x 5 cap screws (10) and 3/4 lock washers (12) in the top two holes. If tractor has repositioned air conditioning lines, fasten air conditioning bracket (7) in rear hole with coupler support toward tractor and secure the air conditioning coupler to bracket using original equipment lock nut. Use 3/4 x 1-1/2 cap screws (8) and lock washers (12) to secure left mid mounting bracket in the bottom two holes.
4. Fasten the right mid mounting bracket (4) to the right side of tractor transmission housing using 3/4 x 2-3/4 cap screws (9) and lock washers (12) in the top two holes, and 3/4 x 1-1/2 cap screws (8) and lock washers (12) in the bottom two holes.
5. Elevate the mid mounting crosstie (5) to mid mounting brackets (3 & 4). For tractors without cab, install the mid mounting crosstie as shown. For tractors with cab, rotate the mid mounting crosstie 180° horizontally (this will place the mid mounting tubes approximately 8" ahead of the position shown). Center mid mounting crosstie with bottom pads on tractor clutch casting. Fasten mid mounting crosstie to mid mounting brackets using 3/4 x 5-1/2 cap screws (11), bottom retainer flats (6) and 3/4 lock nuts (13).

NOTE: The 3/4 x 5-1/2 cap screw (11) for the rear hole in the left mid mounting bracket (3) must be installed through the retainer flats (6) first and fastened with the lock nut (13) against the left mid mounting bracket.

INSTALLING LOADER TO MOUNTING BRACKETS

1. Position hinges inside of side frames. Install 3/4 x 6 carriage bolts and secure with lock nuts. (Carriage bolts and lock nuts are supplied with loader.)
2. Attach nylon slings around the loader front bumper and use an overhead hoist to raise the loader off pallet and lower to a horizontal position. Attach the nylon slings around the lift boom arms and use the overhead hoist to raise loader and position side frames over the front mounting brackets. Slide loader to the rear until side frame is over the mid crossie tubes.

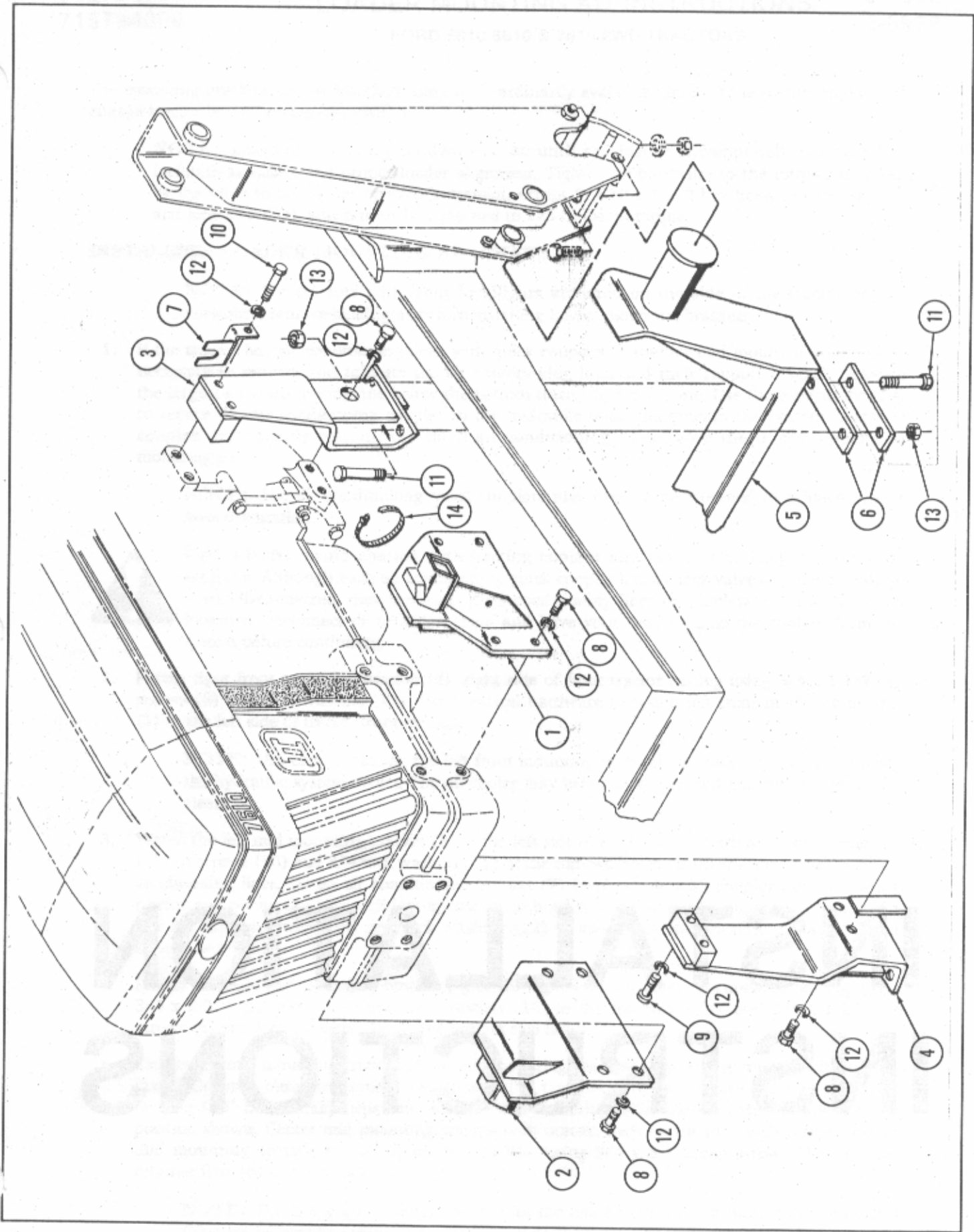


CAUTION: Make sure both front mountings engage loader side frame channels thru notches provided.

3. Clamp hinges around tubes of mid mounting bracket. Fasten with 3/4 x 3 cap screws, flat washers and lock nuts (supplied with loader).
4. Refer to the loader operator's manual and instructions packed with valve and plumbing or hose kit to complete loader installation.

PARTS LIST

Item	Part No.	Description	Qty.
1	36736-1	BRACKET, Front Mounting, Left	1
2	36736-2	BRACKET, Front Mounting, Right	1
3	36431	BRACKET, Mid Mount, Left	1
4	36432	BRACKET, Mid Mount, Right	1
5	36436	CROSSTIE, Mid Mounting	1
6	36478	FLAT, Retainer	4
7	39523	BRACKET, Air Conditioning Coupler Support	1
8	G271767	SCREW, Cap, 3/4-10 x 1-1/2	12
9	G271774	SCREW, Cap, 3/4-10 x 2-3/4	2
10	G271783	SCREW, Cap, 3/4-10 x 5	2
11	G9429887	SCREW, Cap, 3/4-10 x 5-1/2	4
12	G131046	WASHER, Lock, 3/4	16
13	G9414076	NUT, Lock, 3/4-10	4
14	8137-6	STRAP, Plastic Tie	3



1. Remove the top cover from the front panel by pulling it away from the back of the unit. (Do not use any tools or force.)

2. Connect the power cord to the back of the unit. The power cord is supplied with the unit.



3. Check the voltage of the power source before connecting the power cord. The power source must be 115V AC, 60Hz.

INSTALLATION INSTRUCTIONS