

GRILLE GUARD

NEW HOLLAND 72LA LOADERS NEW HOLLAND TRACTORS

Model	2WD	4WD	4WD Terra-Glide	Supersteer
TM115	X	X	X	X
TM125	X	X	X	X
TM135	X	X	X	X
TM150	X	X	X	X
TM165	X	X	X	X

Guard can be installed using tools ordinarily available.

Grille guard is designed to fit tractors with front weight brackets and weights, if so equipped.

Run 20mm-2.50 thread tap into tractor front casting bolt holes which will be used for grille guard installation.

INSTALLING GRILLE GUARD ON 2WD, 4WD AND 4WD TERRA-GLIDE TRACTORS (Figure 1)

NOTE: Leave all attaching hardware loose until Grille Guard is completely assembled to facilitate assembly and proper alignment.

1. Install front mounting assembly (2) to front tractor casting with four 20mm x 50mm cap screws (8) and 20mm lock washers (10).

If tractor is equipped with weight bracket, remove bracket. Install front mounting assembly (2) and spacers (5) between front tractor casting and weight bracket using six 20mm x 90mm cap screws (7) and flat washers removed with weight bracket.

NOTE: Spacers (5) are required when tractor is equipped with front weight bracket.

2. Attach struts (3 & 4) to front tractor casting with 20mm x 50mm cap screws (8), 3/4 flat washers (11) and 20mm lock washers (10). Secure struts (3 & 4) to front mounting assembly (2) with 5/8 carriage bolts (14) and 5/8 lock nuts (9).

NOTE: Terra-Glide Tractors use only one hole to mount struts (3 & 4) to front casting (See Figure 1).

3. Attach grille guard assembly (1) to front mounting assembly (2) using 5/8 x 2 cap screws (13), 5/8 flat washers (12), spacer tubes (6) and 5/8 lock nuts (9).

4. Tighten and torque all hardware to specifications on torque chart on page 4.

INSTALLING GRILLE GUARD ON SUPERSTEER TRACTOR (Figure 2)

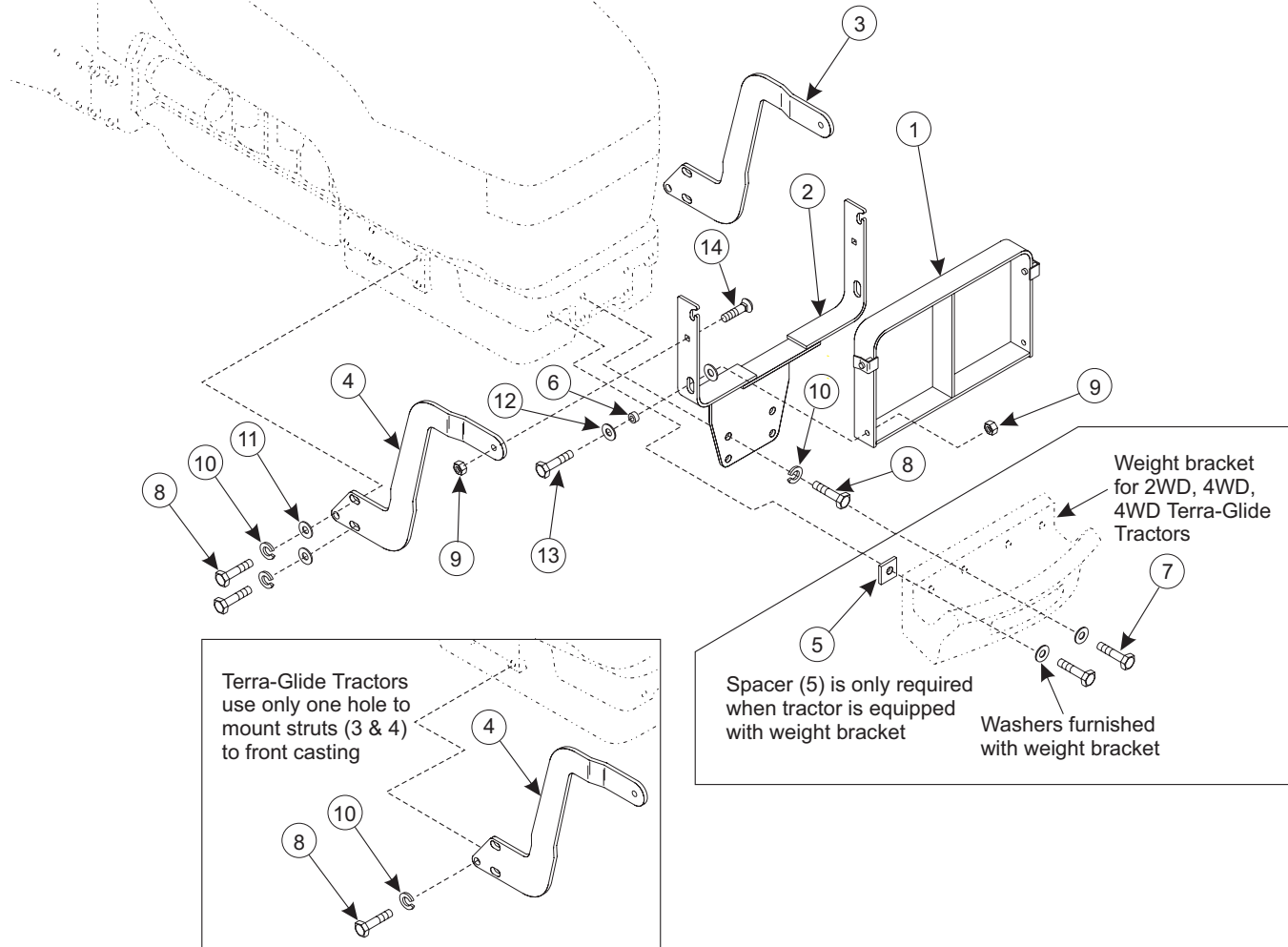
NOTE: Leave all attaching hardware loose until Grille Guard is completely assembled to facilitate assembly and proper alignment.

1. Install front mounting assembly (2) to front tractor casting with four 20mm x 50mm cap screws (6) and 20mm lock washers (9).
2. Attach struts (3 & 4) over loader mid mounting plate, through front two holes of tractor casting with 20mm x 70mm cap screws (7), 3/4 flat washers (10) and 20mm disc spring washers (Supplied in mounting kit - disc spring washers are installed with serrated surface facing bolt head). Secure struts (3 & 4) to front mounting assembly (2) with 5/8 carriage bolts (13), spacers (14) and 5/8 lock nuts (8).
3. Attach grille guard assembly (1) to front mounting assembly (2) using 5/8 x 2 cap screws (12), 5/8 flat washers (11), spacer tubes (5) and 5/8 lock nuts (8).
4. Tighten and torque all hardware to specifications on torque chart on page 4.

OPENING HOOD

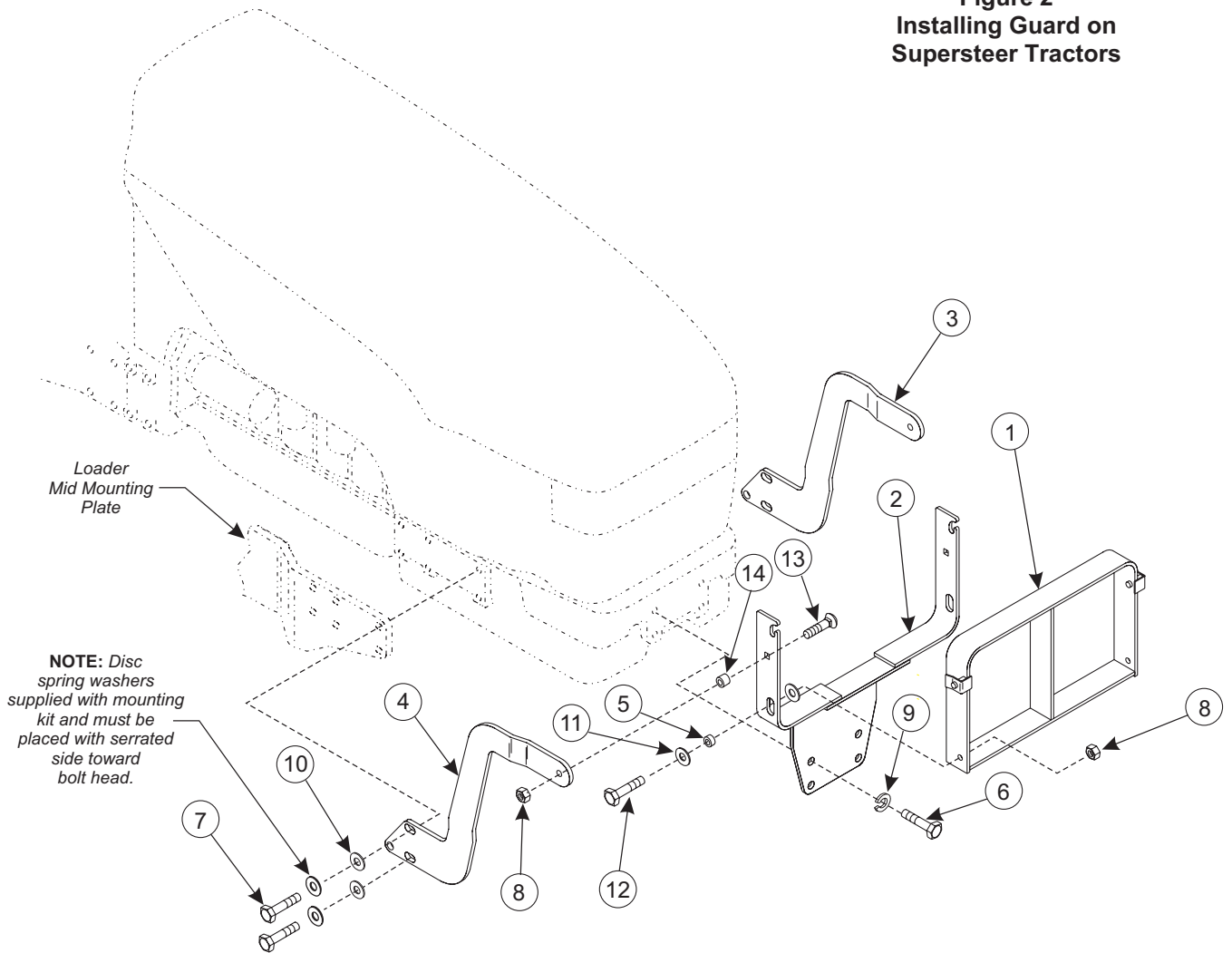
To open hood lift guard and tilt guard forward away from tractor hood.

Figure 1
Installing Guard on 2WD, 4WD and
4WD with Terra-Glide Tractors



ITEM	SMC NO.	NH NO.	DESCRIPTION	QTY.
1	48288	86582540	GRILLE GUARD ASSEMBLY	1
2	48230	86582541	FRONT MOUNTING ASSEMBLY	1
3	48287-1	86582542	STRUT, Left	1
4	48287-2	86582543	STRUT, Right	1
5	48231	86582544	SPACER (Used with Weight Bracket)	2
6	48285-1	86582545	SPACER, Tube	2
7	6090-125	412346	SCREW, Cap, 20mm-2.5 x 90mm (Used with Weight Bracket)	6
8	6090-107	9847023	SCREW, Cap, 20mm-2.5 x 50mm, Class 8.8	8
9	G9414075	19670	NUT, Lock, 5/8-11	4
10	G11500166	9847025	WASHER, Lock, 20mm	8
11	G131017	87381	WASHER, Flat, 3/4	4
12	G130999	80299	WASHER, Flat, 5/8	4
13	G271723	86505999	SCREW, Cap, 5/8-11 x 2	2
14	41839-1	280617	CARRIAGE BOLT, 5/8-11 x 1.50	2



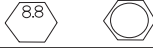

Figure 2
Installing Guard on
Supersteer Tractors



ITEM	SMC NO.	NH NO.	DESCRIPTION	QTY.
1	48288	86582540	GRILLE GUARD ASSEMBLY	1
2	48230	86582541	FRONT MOUNTING ASSEMBLY	1
3	48287-1	86582542	STRUT, Left	1
4	48287-2	86582543	STRUT, Right	1
5	48285-1	86582545	SPACER, Tube	2
6	6090-107	9847023	SCREW, Cap, 20mm-2.5 x 50mm, Class 8.8	4
7	6090-126		SCREW, Cap, 20mm-2.5 x 70mm (<i>Supersteer tractor only</i>)	4
8	G9414075	19670	NUT, Lock, 5/8-11	4
9	G11500166	9847025	WASHER, Lock, 20mm	4
10	G131017	87381	WASHER, Flat, 3/4	4
11	G130999	80299	WASHER, Flat, 5/8	4
12	G271723	86505999	SCREW, Cap, 5/8-11 x 2	2
13	41839-9		CARRIAGE BOLT, 5/8-11 x 2.50 (<i>Supersteer tractor only</i>)	2
14	48285-2		SPACER, .94 O.D. X .63 I.D. X 1" Lg (<i>Supersteer tractor only</i>)	2

GENERAL TORQUE SPECIFICATIONS

USE THE FOLLOWING TORQUES WHEN SPECIAL TORQUES ARE NOT GIVEN

AMERICAN STANDARD CAP SCREWS									METRIC CAP SCREWS								
SAE Grade	5				8				Metric Class	8.8				10.9			
																	
Cap Screw	TORQUE				TORQUE				Cap Screw	TORQUE				TORQUE			
Size	FT-LBS		Nm		FT-LBS		Nm		Size	FT-LBS		Nm		FT-LBS		Nm	
Inches	MIN	MAX	MIN	MAX	MIN	MAX	MIN	MAX	Millimeters	MIN	MAX	MIN	MAX	MIN	MAX	MIN	MAX
1/4-20	6.25	7.25	8.5	10	8.25	9.5	11	13	M6x100	6	8	8	11	9	11	12	15
1/4-28	8	9	11	12	10.5	12	14	16	M8 x 1.25	16	20	215	27	23	27	31	36.5
5/16 - 18	14	15	19	20	18.5	20	25	27	M10 x 1.50	29	35	39	47	42	52	57	70
5/16 - 24	17.5	19	23	26	23	25	31	34	M12 x 1.75	52	62	70	84	75	91	102	123
3/8 - 16	26	28	35	38	35	37	47.5	50	M14 x 2.00	85	103	115	139	120	146	163	198
3/8 - 24	31	34	42	46	41	45	55.5	61	M16 x 2.50	130	158	176	214	176	216	238	293
7/16 - 14	41	45	55.5	61	55	60	74.5	81	M18 x 2.50	172	210	233	284	240	294	325	398
7/16 - 20	51	55	69	74.5	68	75	92	102	M20 x 2.50	247	301	335	408	343	426	465	577
1/2 - 13	65	72	88	97.5	86	96	116	130	M22 x 2.50	332	404	450	547	472	576	639	780
1/2 - 20	76	84	103	114	102	112	138	152	M24 x 3.00	423	517	573	700	599	732	812	992
9/16 - 12	95	105	129	142	127	140	172	190	M27 x 3.00	637	779	863	1055	898	1098	1217	1488
9/16 - 18	111	123	150	167	148	164	200	222	M30 x 3.00	872	1066	1181	1444	1224	1496	1658	2027
5/8 - 11	126	139	171	188	168	185	228	251	NOTE: These values apply to fasteners as received from the supplier, dry or when lubricated with normal engine oil. They do not apply if special graphite or molydisulphide greases or other extreme pressure lubricants are used.								
5/8 - 18	152	168	206	228	203	224	275	304									
3/4 - 10	238	262	322	355	318	350	431	474									
3/4 - 16	274	305	371	409	365	402	495	544									
7/8 - 9	350	386	474	523	466	515	631	698									
7/8 - 14	407	448	551	607	543	597	736	809									
1 - 8	537	592	728	802	716	790	970	1070									
1 - 14	670	740	908	1003	894	987	1211	1337									

INSTALLATION INSTRUCTIONS