

Keep with Operators Manual

## MOUNTING KIT

### NEW HOLLAND 1530, 1630, 1725, 1925, TC25, TC29, TC29D, TC33 & TC33D 2WD, FWA & SUPERSTEER TRACTORS SMC 2408 LOADER

Mounting brackets can be installed using tools ordinarily available.

**NOTE:** Leave all hardware loose until loader is completely assembled to facilitate alignment. Torque hardware to specifications listed in loader manual.

#### INSTALLING MOUNTING BRACKETS

1. Install front mounting brackets (3 & 4) to tractor frame using 1/2 x 1-3/4 cap screws (5) and 1/2 lock nuts (6).

**NOTE:** If tractor is equipped with mid remotes, remove and discard 1/2 spacer and sandwich right midmounting bracket (2) between remote bracket and tractor casting. Use existing hardware to mount remote bracket (Figure 1A).

2. Install midmounting brackets (1 & 2) to tractor transmission casting using 16mm x 45mm cap screws (8) and 5/8 lock washers (7).

3. **STD. FWA OR 2WD Only** - Support front of tractor and remove 14mm bolts holding rear of front axle casting to tractor frame. Fasten loader midmounting in these holes using 14mm-1.50 x 55mm cap screws (10) and 9/16 lock washers (12).

**SUPERSTEER Only** - Remove forward 4 bolts fastening engine block to frame (NOTE: On right side remove steel pressure line on hydraulic pump). Using Loctite (medium strength), install support flat (9) at these holes using 14mm-1.50 x 50mm Grd 10.9 (13) and 9/16 lock washers (12). Torque these bolts from 86 to 109 ft. lbs. Fasten loader midmounting to these plates using 14mm-1.50 x 55mm cap screws (10), 14mm-1.50 hex nuts (11) and 9/16 lock washer (12). Reinstall hydraulic pressure line.

#### **LOADER MOUNTED WITH 914A BELLY MOWER**

Do not use 3/8" spacer between mower pivot-up stop plates and loader mountings. If necessary, for proper alignment shim between mower front lift brackets and pivot-up stop plate with 1/8 thick 3/4" flat washer.

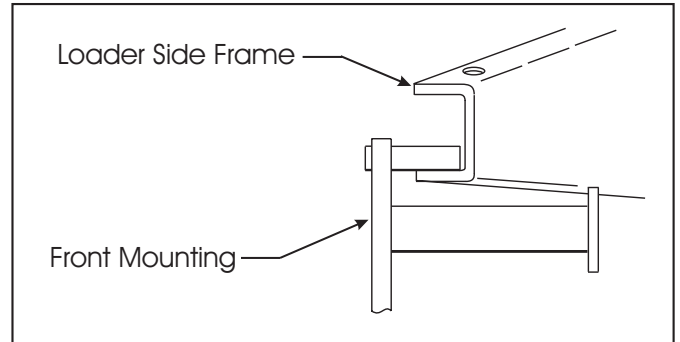
#### INSTALLING LOADER

1. Attach nylon sling to bumper and use overhead hoist to support loader while removing pallet from loader

**NOTE:** Some loader hardware is used to attach loader to pallet. After removing loader from pallet reinstall hardware to same location on loader.

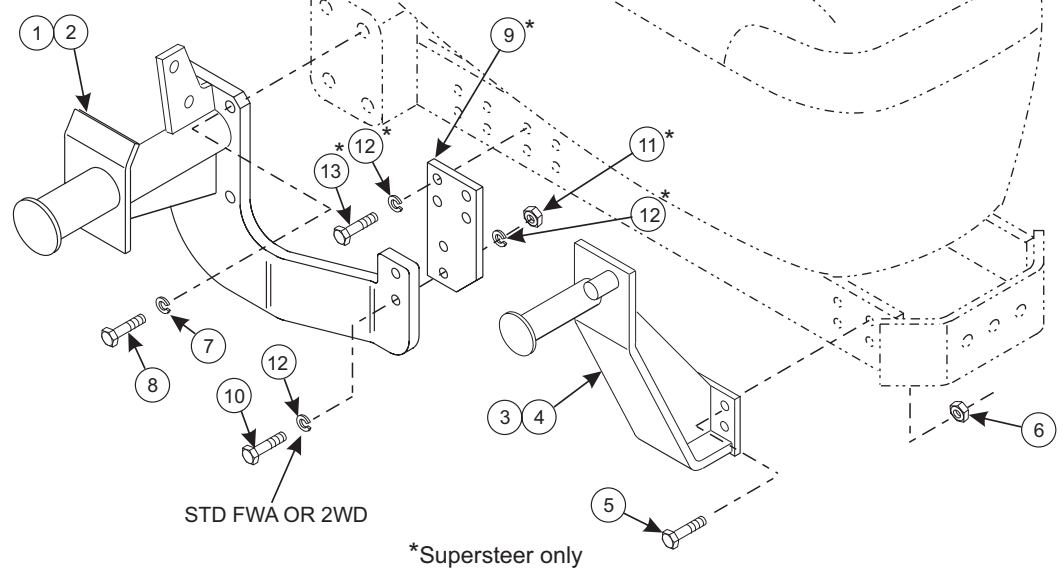
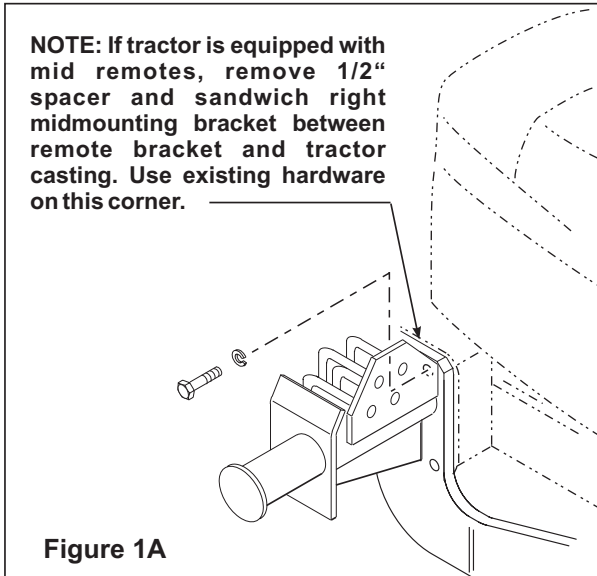
2. Loop nylon slings around loader boom. Remove hinge clamping hardware.
3. Using overhead hoist, raise loader over front mounting bracket. Slide loader to rear until side frames rest on midmounting tubes.

**NOTE:** Lower lip of side frame channel must be between front mounting tubes.



4. Clamp hinges around midmounting tubes using hardware provided.
5. Refer to plumbing kit instructions to complete loader installation.

Figure 1  
Installing Mounting Kit



**PARTS LIST - MOUNTING KIT**

ITEM	PART No.	DESCRIPTION	QTY.
1	49409	MIDMOUNT, Left	1
2	49410	MIDMOUNT, Right	1
3	45520-1	FRONT MOUNTING, Left	1
4	45520-2	FRONT MOUNTING, Right	1
5	41838-12	SCREW, Cap, 1/2-13 x 1-3/4	8
6	41840-5	NUT, Lock, 1/2-13	8
7	41837-7	WASHER, Lock, 5/8	8
8	42672-21	SCREW, Cap, 16mm-2.0 x 45mm	8
9	49408	FLAT (Supersteer only)	2
10	42672-22	SCREW, Cap, 14mm-1.50 x 55mm	4
11	26457-1	NUT, Hex, 14mm-1.50 (Supersteer only)	4
12	41837-6	WASHER, Lock, 9/16	12
13	49040-5	SCREW, Cap, 14mm-1.50 x 55mm, Grd 10.9 (Supersteer only)	8