

Keep with Operators Manual

SMC 75 BACKHOE MOUNTING KIT

KUBOTA L2900, L3300, L3600, L4200, L3010DT, L3010HST, L3410DT, L3410HST, L3710DT, L3710HST, L4310DT & L4310HST TRACTORS

Complete backhoe mounting requires subframe mounting kit 2-6508 and mounting kit 2-6509.

IMPORTANT: Remove lynch pins and disconnect supports to disable 3-point hitch arms.

INSTALLING MOUNTING BRACKETS (Figure 3)

1. Install front mounting bracket (1) to underside of transmission casting using 12MM x 30MM cap screws (8) and 1/2 lock washers (9).

NOTE: Mounting bracket (1) must be turned end for end with the top plate lip to the rear on '10 series HST tractors (see figure 3).

2. Remove and discard four bolts which secure bottom of tractor hitch to rear of tractor.

NOTE: Hitch will be held in place by two bolts at rear of tractor.

3. Install spacer (5) and rear mounting bracket (2) to rear of tractor rear of tractor using 14MM x 45MM cap screws (10) and 9/16 lock washers (11).

INSTALLING SUBFRAME (Figure 3)

1. Install front and rear mounting tubes (3 & 4) to channels (19 & 20) using 1/2 x 1-1/4 cap screws (12) and 1/2 lock nuts (13).

NOTE: Install mounting tubes in forward most set of holes for each tube.

2. Install subframe assembly to backhoe mainframe using 7/8 x 3 cap screws (16), 7/8 lock washers (18) and 7/8 lock nuts (17) in rear holes and 3/4 x 2 cap screws (14) and 3/4 lock nuts (15) in front holes.
3. Install support braces (21) in rear set of holes on subframe using 3/4 x 2-3/4 cap screws (24) and 3/4 lock nuts (23) in channels and double nut on backhoe mainframe.

NOTE: Double nut cap screw (items 24) after torquing first nut to 350 Ft. Lbs.

MOUNTING BACKHOE TO TRACTOR

1. Back tractor over subframe close enough to connect to backhoe hydraulic system.
2. Using backhoe hydraulic controls, extend stabilizer cylinders and boom cylinder until rear mounting tube is level with rear mounting bracket and front of subframe is on ground (Figure 1).
3. Slowly back tractor until rear mounting tube is seated in rear mounting bracket.
4. Retract boom cylinder and stabilizer cylinders so front of subframe swings up until front mounting tube is seated in front mounting bracket (Figure 2).
5. Secure front mounting tube in place using clevis pins (6) and lynch pins (7).

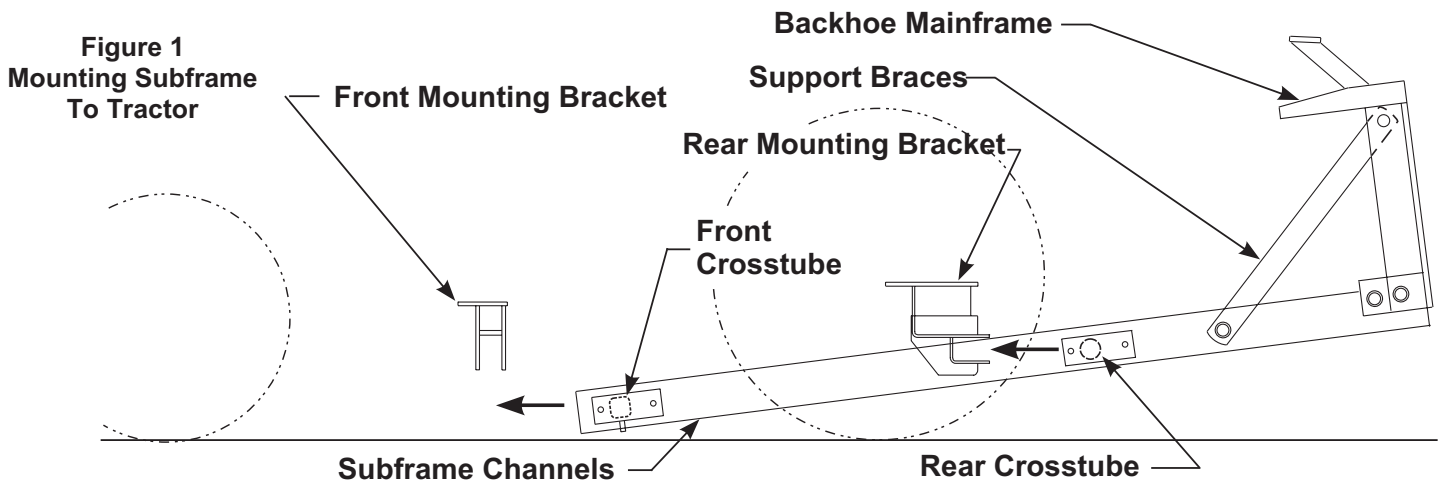
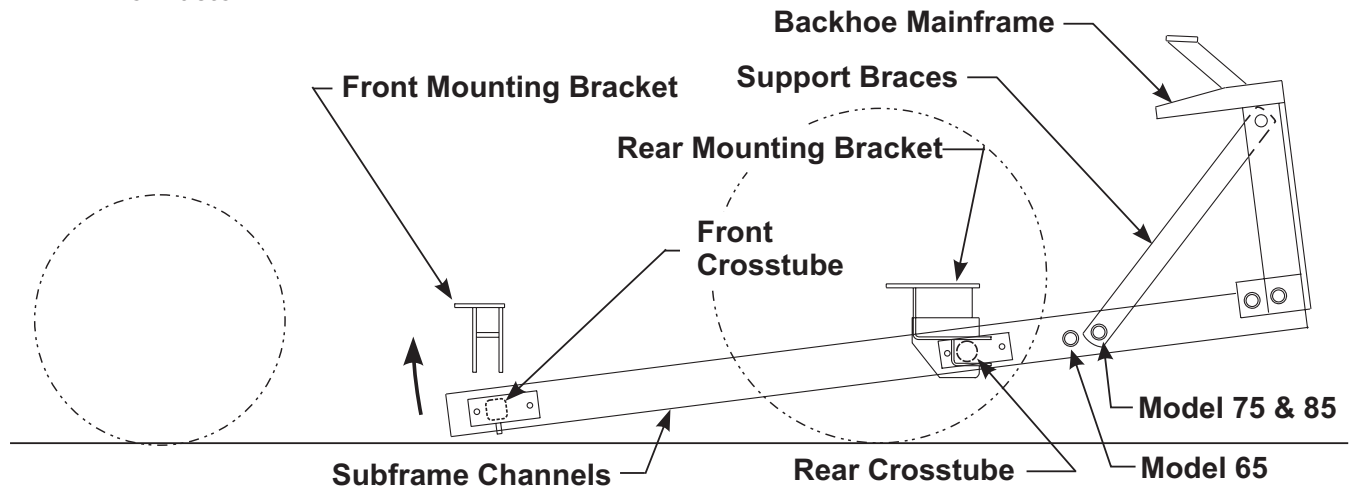


Figure 2
Mounting Subframe
To Tractor



PARTS LIST - SUBFRAME MOUNTING KIT

ITEM	PART NO.	DESCRIPTION	QTY.
1	45717	MOUNTING BRACKET, Front	1
2	45702	MOUNTING BRACKET, Rear	1
3	45708	MOUNTING TUBE, Front	1
4	45710	MOUNTING TUBE, Rear	1
5	45718	SPACER PLATE	1
6	44892	PIN,	2
7	44756-1	LYNCH PIN	2
8	6090-25	SCREW, Cap, 12MM-1.25 x 30MM	4
9	G120384	WASHER, Lock, 1/2	4
10	6090-3	SCREW, Cap, 14MM-1.50 x 45MM	6
11	G120898	WASHER, Lock, 9/16	6
12	G180175	SCREW, Cap, 1/2-13 x 1-1/4	8
13	G9414074	NUT, Lock, 1/2-13	8
14	G271771	SCREW, Cap, 3/4-10 x 2	2
15	G9414076	NUT, Lock, 3/4-10	2
16	G271819	SCREW, Cap, 7/8-9 x 3	2
17	G220087	NUT, Lock, 7/8-9	2
18	G131047	WASHER, Lock, 7/8	2

PARTS LIST - SUBFRAME CHANNEL KIT - 2-6509 - Order Separately

ITEM	PART NO.	DESCRIPTION	QTY.
19	45700-1	CHANNEL, Left	1
20	45700-2	CHANNEL, Right	1
21	44836	BRACKET	2
22	47264-8	NUT, Lock, 3/4-10	8
23	G221135	SCREW, Cap, 3/4-10 x 2-3/4, Grade 8	4

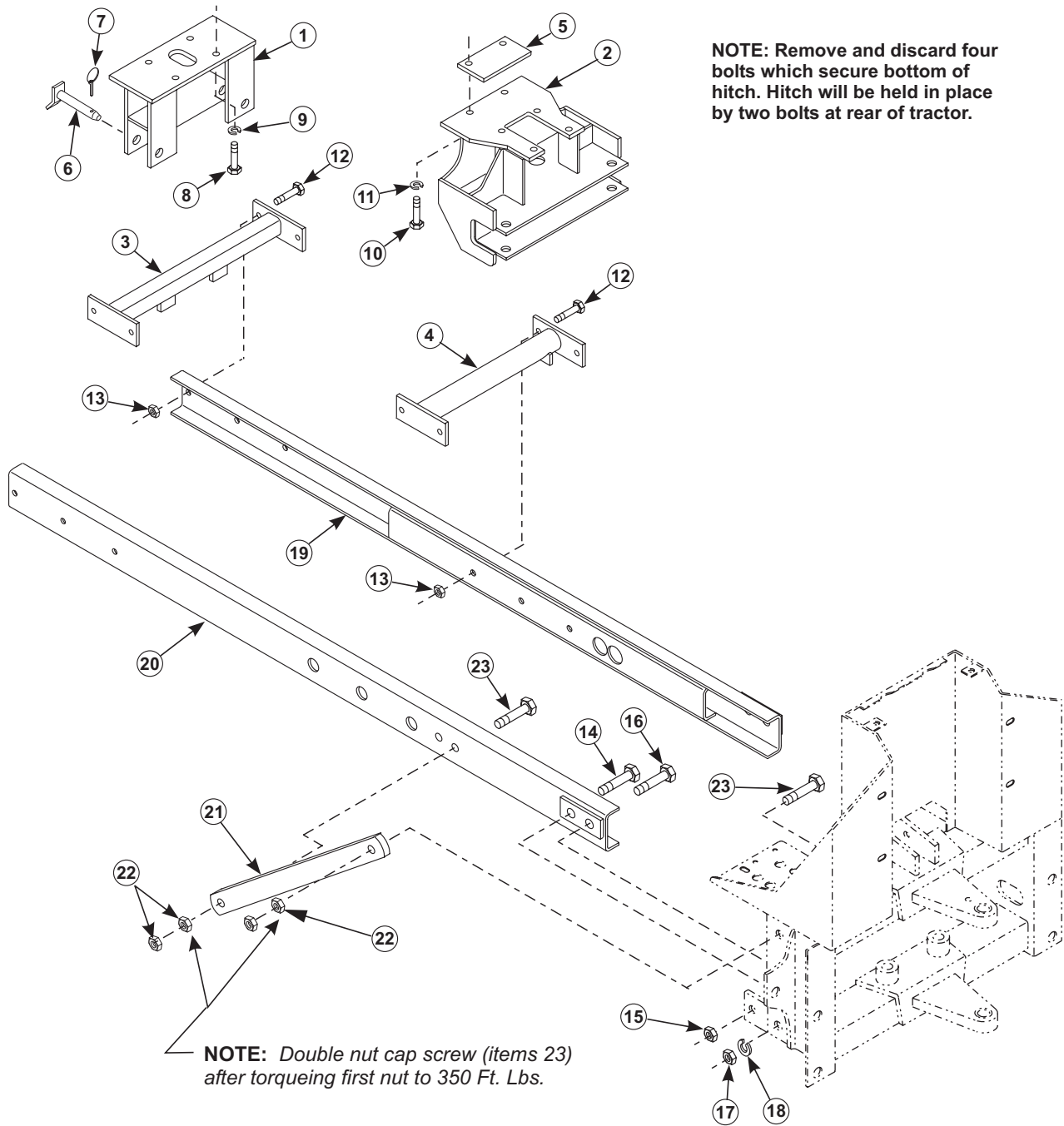


Figure 3
Subframe Mounting Kit