

Keep With Loader Operator's Manual

SMC 75 BACKHOE THREE POINT ADAPTER KIT

Three point adapter kit can be installed using tools ordinarily available.

INSTALLING THREE POINT ADAPTER (Figure 3)

1. Install link pins (6) to backhoe using 7/8 lock washers (13) and 7/8 nuts (14).
2. Join upper link (1) and center link (2) using 3/4 x 2-1/2 cap screws (8) and 3/4 lock nuts (10). Leave a minimum of 3-3/4 inches between bolts.

NOTE: Leave hardware loose. Assembly may need to be lengthened or shortened to mount backhoe mainframe in vertical position.

3. Install link assembly to backhoe mainframe using clevis pin (11) and hair pin cotter (12).
4. Fasten support braces (3) to backhoe using 3/4 x 2 cap screws (9) and 3/4 lock nut (10) and to link assembly using 3/4 x 4 cap screw (8), bushing (4) and 3/4 lock nut (10).

NOTE: Support brace must be fastened within 6-3/4 inches of link point that fastens to tractor.

MOUNTING BACKHOE TO TRACTOR

1. Back tractor close enough to backhoe to connect hose kit or pump to tractor.
2. Using backhoe hydraulics, lower stabilizers until backhoe can be connected to 3-point hitch. Bottom of backhoe boom pivot should be 8 to 12 inches off ground when attaching to tractor lower 3-point arms.
3. Connect lower 3-point hitch members to backhoe and secure using lynch pins from 3-point hitch.
4. Connect link assembly to upper connecting point on 3-point hitch using clevis pin and lynch pin from 3-point hitch.

NOTE: Insert adapter tube (5) in end of link assembly if necessary to adapt to smaller 3-point connecting pin.

5. Adjust link assembly length if necessary for backhoe mainframe to rest in vertical position.

NOTE: Adjustment limitations are shown in Figure 1.

6. Check for proper operator head clearance with ROPS and cab (Figure 2).
7. Tighten all hardware in link assembly to torque specifications in backhoe manual.

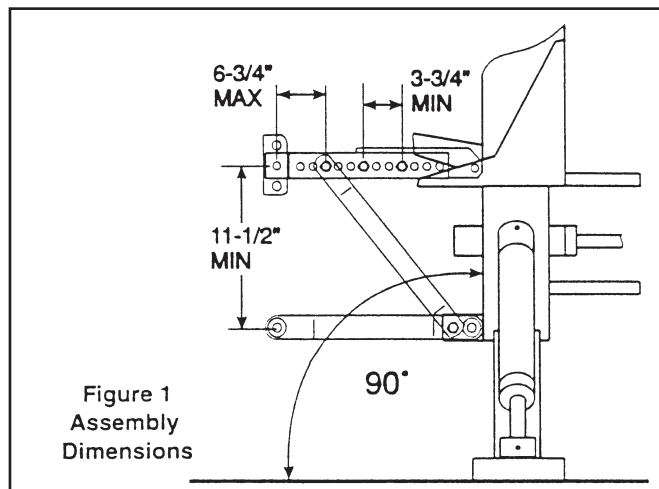


Figure 1
Assembly
Dimensions

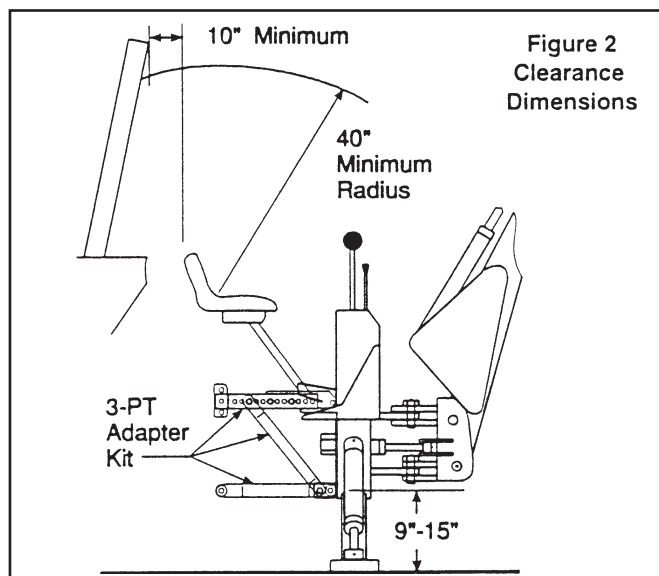


Figure 2
Clearance
Dimensions



WARNING: Escaping hydraulic fluid under pressure can penetrate skin causing serious injury.

- DO NOT use your hands to check for leaks. Use a piece of cardboard or paper to search for leaks.
- Stop engine and relieve pressure before connecting or disconnecting lines.
- Tighten all connections before starting engine or pressurizing lines.

If any fluid is injected into skin, obtain medical attention immediately or gangrene may result.

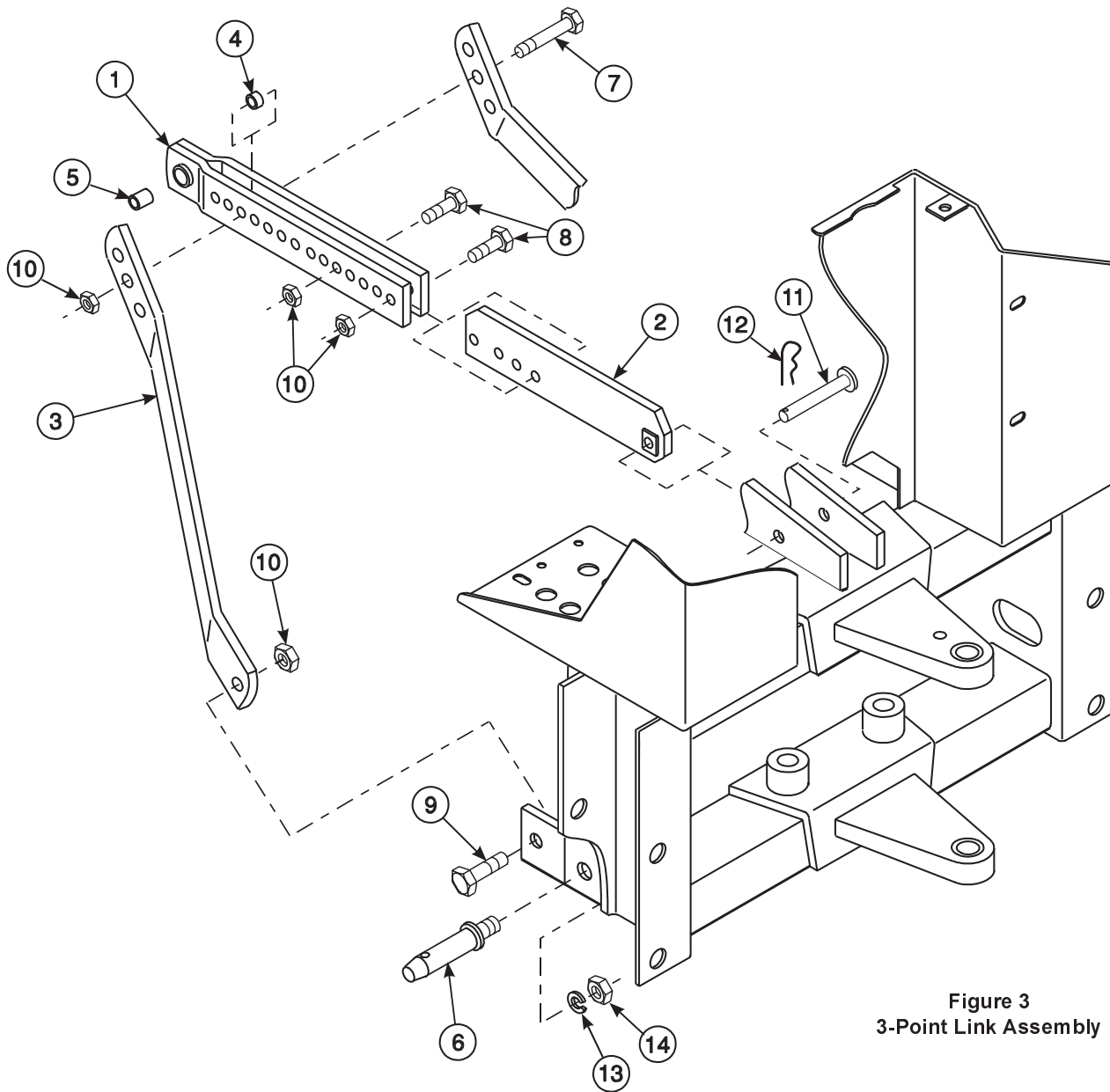


Figure 3
3-Point Link Assembly

PARTS LIST - MOUNTING KIT

| ITEM | PART NO. | DESCRIPTION | QTY. |
|------|----------|----------------------------|------|
| 1 | 44925 | UPPER LINK, Assembly | 1 |
| 2 | 44929 | CENTER LINK, Assembly | 1 |
| 3 | 48974 | BRACE | 2 |
| 4 | 15281 | BUSHING | 1 |
| 5 | 44926-1 | TUBE | 1 |
| 6 | ARP13479 | LINK PIN | 2 |
| 7 | G271779 | SCREW, Cap, 3/4-10 x 4 | 1 |
| 8 | G271773 | SCREW, Cap, 3/4-10 x 2-1/2 | 2 |
| 9 | G271771 | SCREW, Cap, 3/4-10 x 2 | 2 |
| 10 | G9414076 | NUT, Lock, 3/4-10 | 5 |
| 11 | 6021-2 | CLEVIS PIN, 3/4 x 3-1/2 | 1 |
| 12 | G137228 | PIN, Cotter, 5/32 x 1-1/2 | 1 |
| 13 | G131047 | WASHER, Lock, 7/8 | 2 |
| 14 | G426767 | NUT, Hex, 7/8-14 | 2 |