

756C & 757C BACKHOE SUBFRAME NEW HOLLAND 1720 & 1920 TRACTORS

Subframe can be installed on tractor and backhoe using tools ordinarily available. Tractor must be equipped with loader to install subframe.

Complete backhoe installation requires hydraulic kit 716395001 (2-6383) or 716396001 (2-6384). Install hydraulic kit to tractor before installing backhoe to tractor.

INSTALLING SUBFRAME TO BACKHOE (Figure 3)

1. Install subframe (1) (with crosstube to bottom) to backhoe using 3/4 x 3 cap screws (15) and 3/4 lock nuts (14) in front holes and 7/8 x 3-1/2 cap screws (16), 7/8 lock washers (17) and 7/8 hex nuts (18) in rear holes.
2. Fasten support braces (9) to subframe using 3/4 x 2 cap screws (11) and 3/4 lock nuts (14) (Torque to 350 ft lbs).
3. Fasten support braces (9) to backhoe using 3/4 x 2 cap screws (11) and 3/4 lock nuts (14).

NOTE: 756C backhoe use front set of mounting holes for braces. If using older subframe, drill 7/8 holes as shown (Figures 2 & 3).

INSTALLING MOUNTING BRACKET

1. Remove 16MM screws which secure hitch to underside of tractor.
2. Install mounting bracket (3) to tractor using 16MM x 50MM cap screws and original lock washers.

NOTE: Use 1/8 spacers (23) when tractors are equipped with a swinging drawbar.

3. Install support flats (2) using 12MM x 30MM cap screws (19) and 1/2 lock washers (22) into tractor trumpet housing and 1/2 x 1-1/2 cap screws (20), 1/2 flat washers (24) and 1/2 lock nuts (21) in mounting bracket (3).
4. Remove rear cap screws which secure loader mid-mounting brackets to tractor.
5. Install mounting ears (5 & 6) using spacers (4), 16MM x 80MM cap screws (12) and 5/8 lock washers (13). Refer to Figure 1 for proper spacer location on different tractor models. Torque all bolts to specifications in backhoe manual.

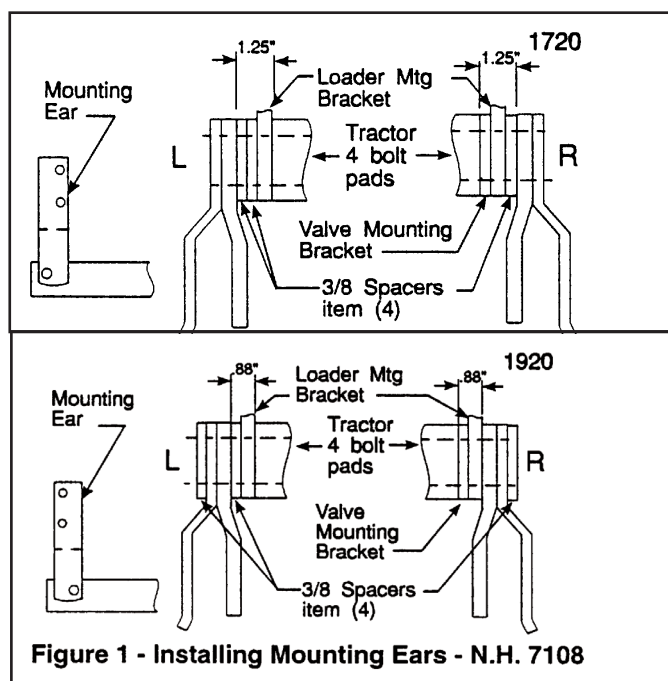


Figure 1 - Installing Mounting Ears - N.H. 7108

MOUNTING BACKHOE TO TRACTOR (Figure 3)

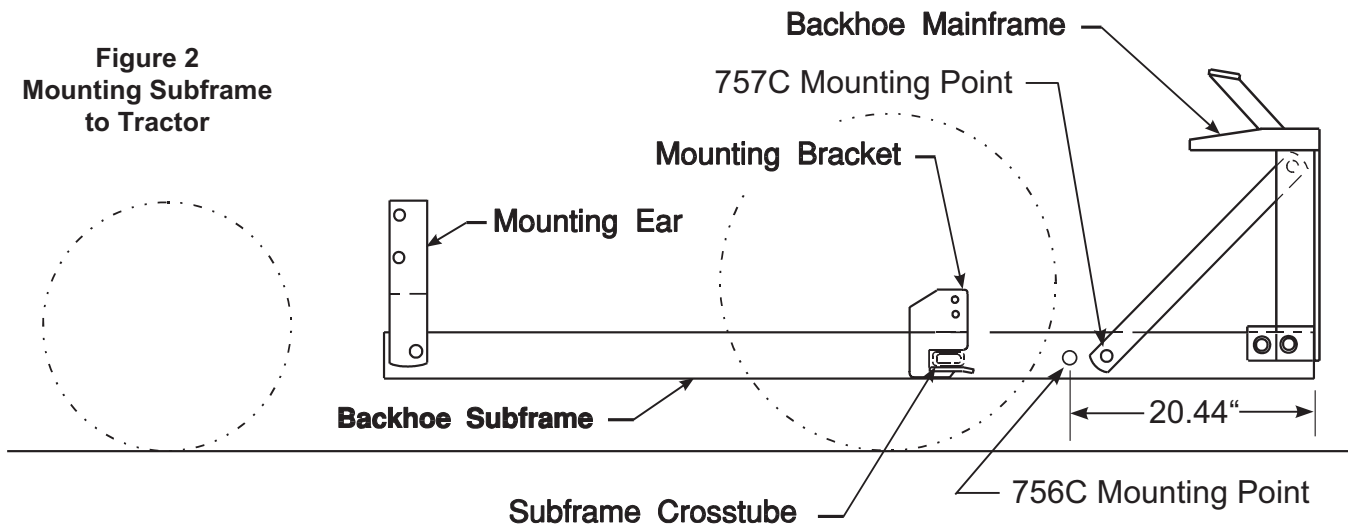
1. Back tractor slowly toward backhoe, parallel to subframe assembly, until hoses can be connected to tractor.
2. Connect hoses to tractor hydraulics.
3. Using backhoe controls, extend bucket and lower stabilizers to provide a base for raising subframe. Using backhoe controls, raise subframe to proper height to connect to tractor.
4. Position 3-point hitch arms inside subframe support braces.
5. Back tractor and position subframe so crosstube engages pocket in rear mounting bracket (3) and holes in front of subframe align with front mounting ears (5 & 6). Install 3/4 pins (7) and lynch pins (8).

NOTE: After backhoe is mounted, swing backhoe full right and full left to be sure there is not interference between swing cylinders and 3-point hitch arms.

PARTS LIST - REPAIR PARTS

ITEM	PART NO.	NH NO.	DESCRIPTION	QTY.
1	44878	SML44878	SUBFRAME	1
2	44885	SML44885	FLAT, Support	2
3	44881	SML44881	BRACKET, Mounting	1
4	44886-1	SML448861	SPACER	3
5	44890-1	SML448901	EAR, Mounting, Left	1
6	44890-2	SML448902	EAR, Mounting, Right	1
7	44892	SML44892	PIN	2
8	44756-1	SML447561	LYNCH PIN	2
9	44836	SML44836	BRACE	2
10	6090-14	SML609014	SCREW, Cap, 16MM-2.0MM x 50MM	4
11	G223527	SMLG223527	SCREW, Cap, 3/4-10 x 2 (Grade 8)(Torque to 350 ft lbs)	4
12	6090-82	00120093	SCREW, Cap, 16MM-2.00MM x 80MM	4
13	G121574	00084057	WASHER, Lock, 5/8	4
14	G9414076	09626598	NUT, Lock, 3/4-10	6
15	G271775	00087337	SCREW, Cap, 3/4-10 x 3	2
16	G271821	SMLG271821	SCREW, Cap, 7/8-9 x 3-1/2	2
17	G131047	00087341	WASHER, Lock, 7/8	2
18	G220087	09849647	NUT, Hex, 7/8-9	2
19	6090-73	09670066	SCREW, Cap, 12MM-1.75MM x 30MM	4
20	G180177	00087689	SCREW, Cap, 1/2-13 x 1-1/2	4
21	G9414074	09636698	NUT, Lock, 1/2-13	4
22	G120384	00080679	WASHER, Lock, 1/2	4
23	44840	SML44840	SPACER, 1/8, (used on tractors with swinging drawbars)	2
24	G120396	00087364	WASHER, Flat, 1/2	4

**Figure 2
Mounting Subframe
to Tractor**



Refer to Figure 1 for proper spacing of spacers (4) and orientation of mounting ears (5 & 6).

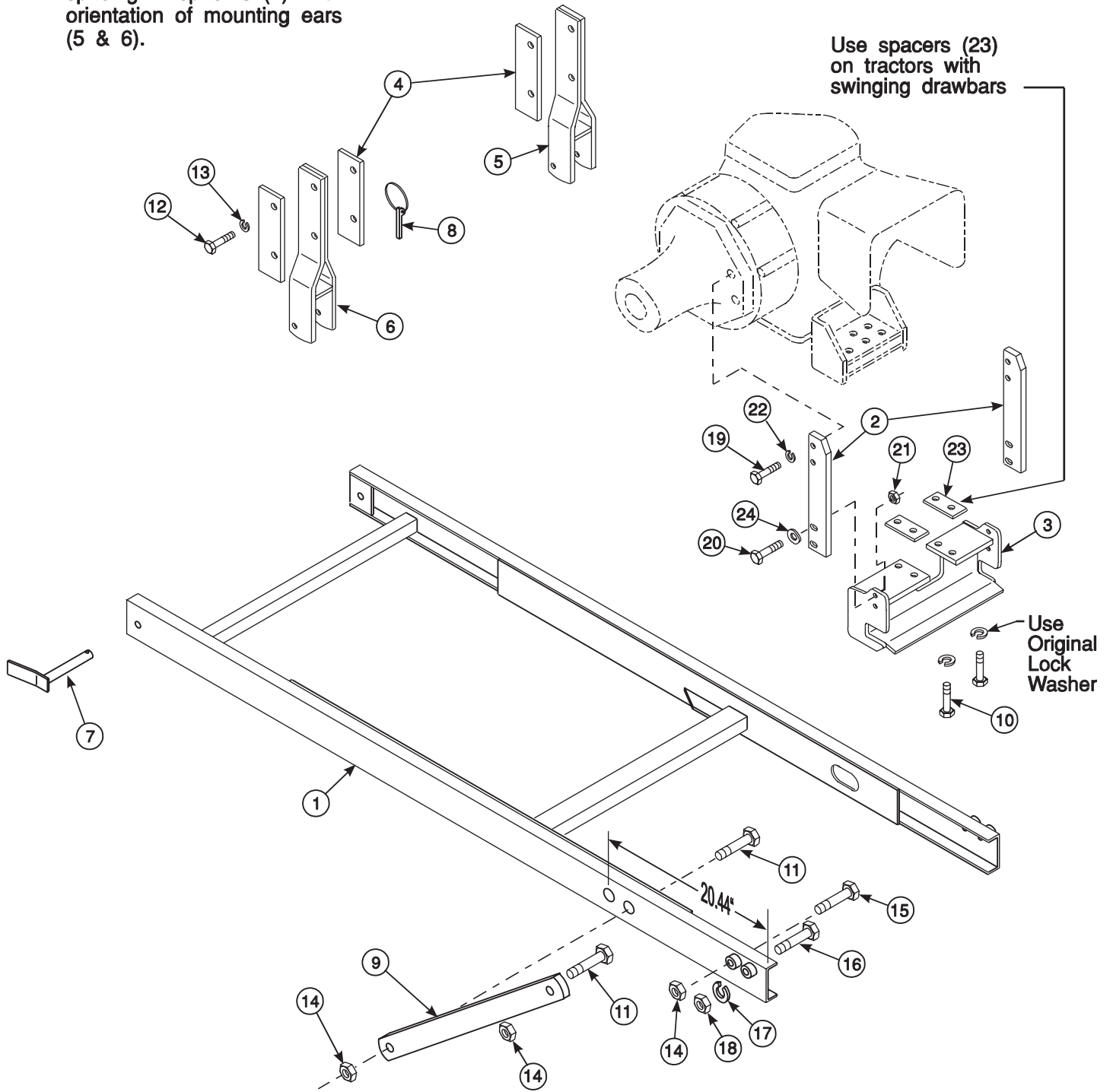


Figure 3
Subframe Assembly

INSTALLATION INSTRUCTIONS