

Keep With Operator's Manual

## 757C & 758C BACKHOE SUBFRAME CASE IH D25, DX25, D29, DX29, D33 & DX33 TRACTORS

Subframe can be installed on tractor and backhoe using tools ordinarily available. Tractor must be equipped with loader to install subframe.

Complete backhoe installation requires hydraulic kit 408306A (2-6385-2). Install hydraulic kit to tractor before installing backhoe to tractor.

### INSTALLING SUBFRAME TO BACKHOE (Figures 2 & 3)

1. Install subframe (1) (with crosstube to bottom) to backhoe using 3/4 x 3 cap screws (15) and 3/4 lock nuts (14) in front holes and 7/8 x 3-1/2 cap screws (16), 7/8 lock washers (17) and 7/8 hex nuts (18) in rear holes.
2. Fasten support braces (9) to outside of subframe and inside of backhoe frame using 3/4 x 2 cap screws (11) and 3/4 lock nuts (14) (Torque to 350 ft lbs).

### INSTALLING MOUNTING BRACKET

1. Remove 16MM cap screws which secure hitch to underside of tractor.

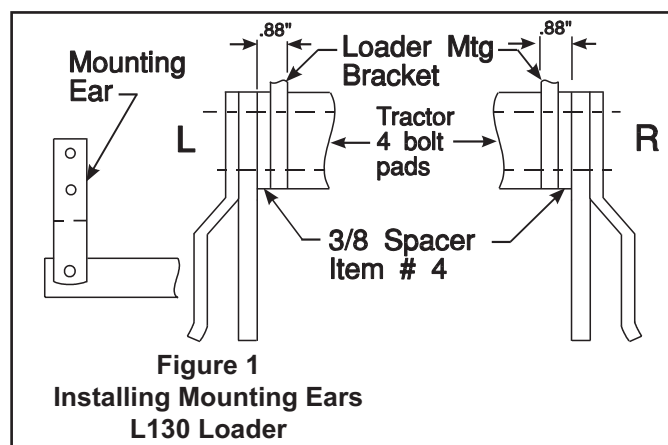
**NOTE:** It may be necessary to support hitch assembly when 16MM cap screws are removed.

2. Install side supports (2) to rear mounting bracket (3) using 1/2 x 1-1/2 cap screws (20) and 1/2 lock nuts (21). Leave hardware loose. Attach side supports to axle housing using 12MM x 30MM cap screws (19) and 1/2 lock washers (22).

**NOTE:** If tractor is equipped with swinging drawbar, install spacers (24).

3. Install mounting bracket (3) in rear mounting holes using 16MM x 50MM cap screws and original lock washers and front mounting holes using 16MM x 100MM cap screws and original lock washers.
4. Remove rear cap screws which secure loader mid-mounting brackets to tractor.
5. Install mounting ears (5 & 13) using spacers (4), 16MM x 80MM cap screws (23) and 5/8 lock washers (24). Right mounting ear has hose holder bracket. Refer to Figure 1 for proper spacer location. Torque all bolts to specifications in backhoe manual.

6. Reinstall clevis pins for swinging drawbar with split rings on top.



### MOUNTING BACKHOE TO TRACTOR (Figure 3)

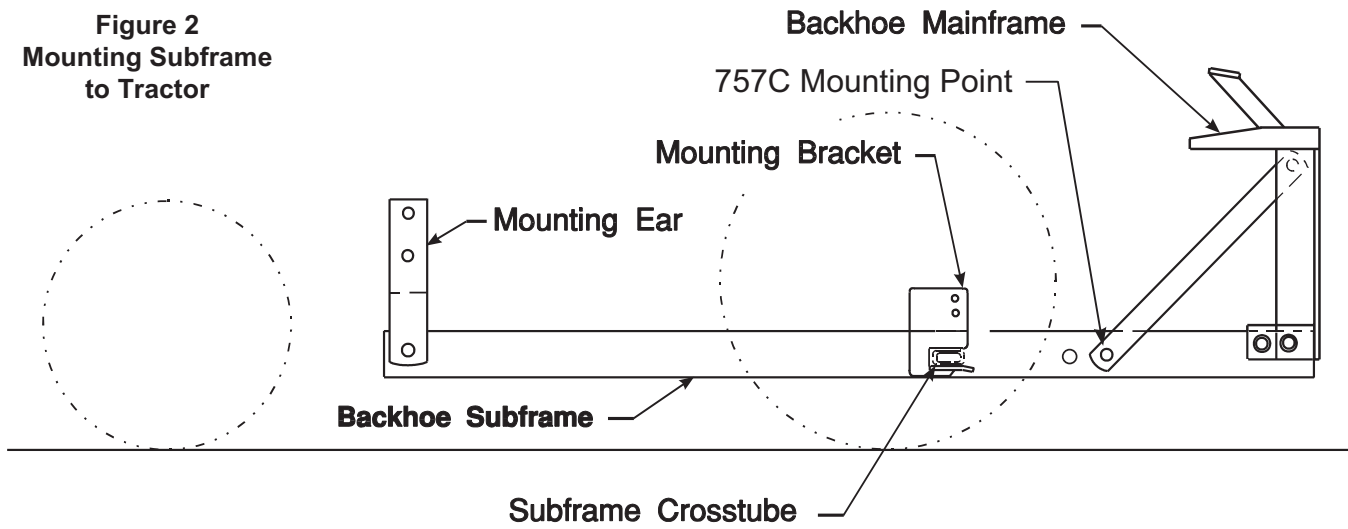
1. Back tractor slowly toward backhoe, parallel to subframe assembly, until hoses can be connected to tractor.
2. Connect hoses to tractor hydraulics.
3. Using backhoe controls, extend bucket and lower stabilizers to provide a base for raising subframe. Using backhoe controls, raise subframe to proper height to connect to tractor.
4. Position 3-point hitch arms inside subframe support braces.
5. Back tractor and position subframe so crosstube engages pocket in rear mounting bracket (3) and holes in front of subframe align with front mounting ears (5 & 13). Install 3/4 pins (7) and lynch pins (8).

**NOTE:** After backhoe is mounted, swing backhoe full right and full left to be sure there is not interference between swing cylinders and 3-point hitch arms.

**PARTS LIST - REPAIR PARTS**

ITEM	DESCRIPTION	QTY.
1	SUBFRAME	1
2	FLAT, Support	2
3	BRACKET, Mounting	1
4	SPACER, 3/8	2
5	EAR, Mounting - Left	1
6	SCREW, Cap, 16MM-2.0MM x 70MM	4
7	PIN	2
8	LYNCH PIN	2
9	BRACE	2
10	SCREW, Cap, 16MM-2.0MM x 50MM	2
11	SCREW, Cap, 3/4-10 x 2 (Grade 8)(Torque to 350 ft lbs)	4
12	SCREW, Cap, 16MM -2.0MM x 100MM	2
13	EAR, Mounting - Right	1
14	NUT, Lock, 3/4-10	6
15	SCREW, Cap, 3/4-10 x 3	2
16	SCREW, Cap, 7/8-9 x 3-1/2	2
17	WASHER, Lock, 7/8	2
18	NUT, Hex, 7/8-9	2
19	SCREW, Cap, 12MM-1.75MM x 30MM	4
20	SCREW, Cap, 1/2-13 x 1-1/2	4
21	NUT, Lock, 1/2-13	4
22	WASHER, Lock, 1/2	4
23	WASHER, Lock, 5/8	8
24	SPACER (Not used on D/DX25 and D/DX29 with clevis type hitch)	2

**Figure 2**  
**Mounting Subframe**  
**to Tractor**



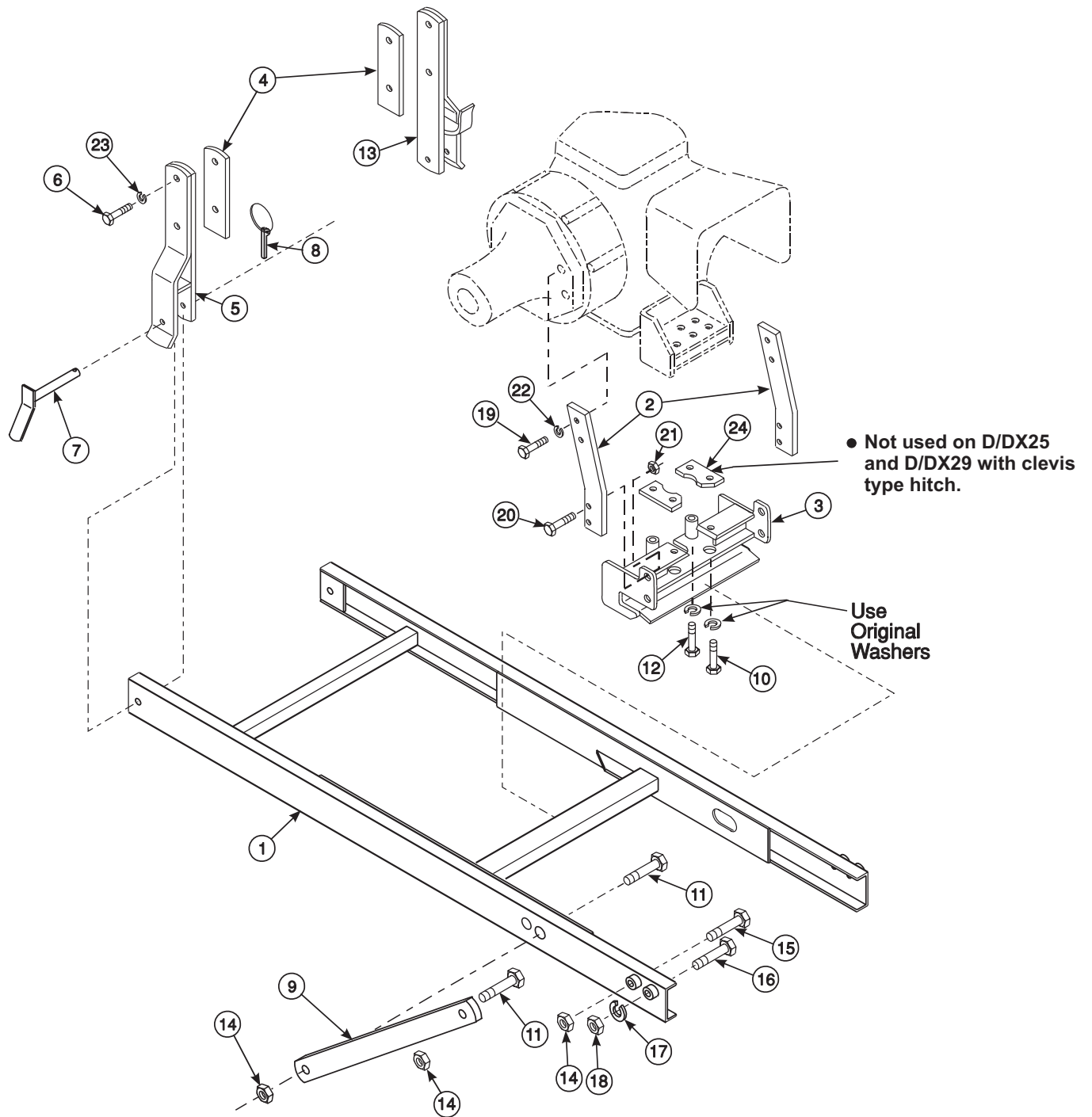


Figure 3  
Subframe Assembly

# **INSTALLATION INSTRUCTIONS**