

Keep With Loader Operator's Manual

SMC 2491

LOADER MOUNTING KIT INSTRUCTIONS

KUBOTA TRACTORS

MODEL	2WD	4WD	LESS CAB	WITH CAB
L3750		X	X	
L4150		X	X	
L4350		X	X	
L4850		X	X	

Mounting brackets can be installed using tools ordinarily available. Shut off tractor engine and engage tractor brakes during installation. If so equipped, remove weight bracket from front of tractor.

After loader is installed, check to be sure front tires clear loader and mounting brackets in all possible positions. To avoid interference between tires and loader boom arms, using front tires larger than 9.5-20 diameter is not recommended.

NOTE: Leave all attaching hardware loose until mounting brackets are completely assembled to facilitate assembly and proper alignment. Tighten all hardware to torque specifications in loader operators manual.

INSTALLING MOUNTING BRACKETS (Figure 1)

1. Install front mounting bracket (1) using 14MM x 50MM cap screws (18) and 9/16 lock washers (8) to front four holes of tractor frame.

NOTE: Model L4350 - Discard extra hardware (Figure 1A).

NOTE: Remove and discard cap screws securing cover plate to tractor transmission. Leave cover plate in place.

2. Install right and left mid mounting brackets (3 & 4) to tractor frame using 14MM x 50MM cap screws (18) and 9/16 lock washers (8) in front holes and 14MM x 40MM cap screws (5) and 9/16 lock washers (8) in rear holes.
3. Fasten reinforcement bars (2) to midmounting brackets (3 & 4) using 1/2 x 1-1/2 cap screws (6) and 1/2 lock nuts (9). Fasten reinforcement bars (2) to tractor rear axle using 5/8 x 2-1/2 cap screws (10), 5/8 flat washers (7) and 5/8 lock nuts (11).

PARTS LIST - MOUNTING KIT

ITEM	PART NO.	DESCRIPTION	QTY.
1	43561	BRACKET, Front Mounting	1
2	43566	REINFORCEMENT BAR	2
3	43565	BRACKET, Midmounting, Right	1
4	43564	BRACKET, Midmounting, Left (Not shown)	1
5	6090-2	SCREW, Cap, 14MM-1.50MM x 40MM	10
6	G180177	SCREW, Cap, 1/2-13 x 1-1/2	8
7	G131016	WASHER, Flat, 5/8	4
8	G120898	WASHER, Lock, 9/16	26
9	G9414074	NUT, Lock, 1/2-13	8
10	G271725	SCREW, Cap, 5/8-11 x 2-1/2	4
11	G9414075	NUT, Lock, 5/8-11	4
12	G271773	SCREW, Cap, 3/4-10 x 2-1/2	4
13	G9414076	NUT, Lock, 3/4-10	4
14	43563	YOKE	1
15	39240	DECAL, Do not tow ...	2
16	6075-4	FITTING, Grease, 1/4-28	4
17	43129	CYLINDER, Lift, 2-3/8	2
18	6090-5	SCREW, Cap, 14MM-1.50MM x 50MM	16

NOTE: L4350 has shorter frame.
Do not use these holes.

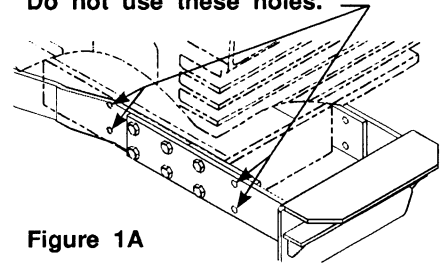


Figure 1A

Remove and discard cap screws securing cover plate. Leave cover plate in place.

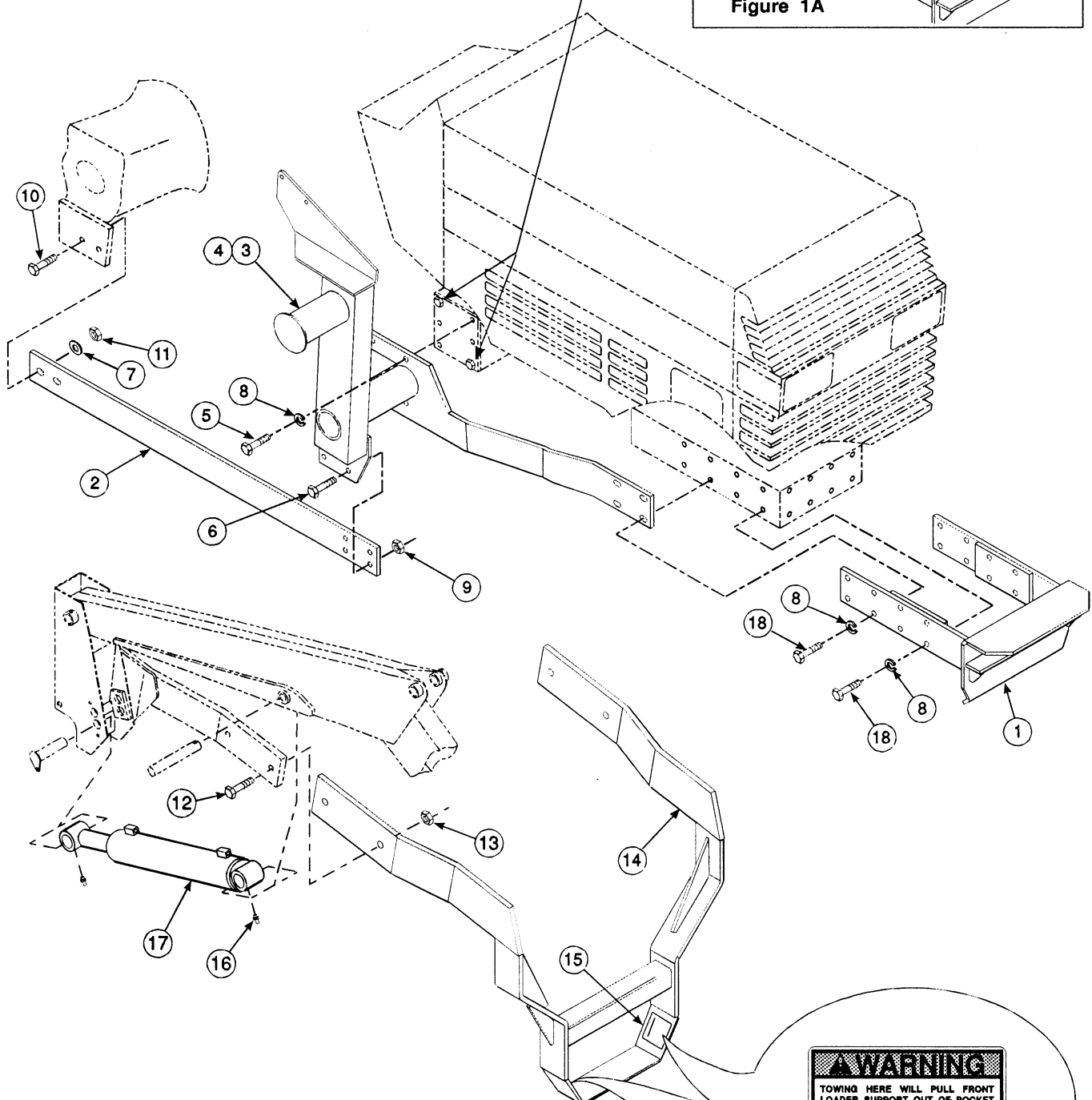


Figure 1
Mount Kit Assembly

WARNING
TOWING HERE WILL PULL FRONT
LOADER SUPPORT OUT OF POCKET
CAUSING DAMAGE AND POSSIBLE
INJURY.
DO NOT USE FOR TOWING

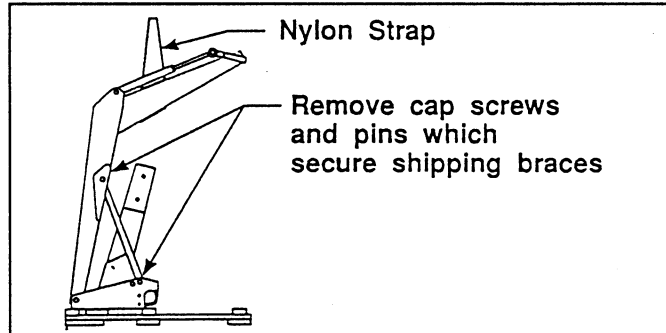
INSTALLING LIFT CYLINDERS

1. Install grease fittings (16) to base and rod ends of lift cylinders (17) with fittings pointing down.



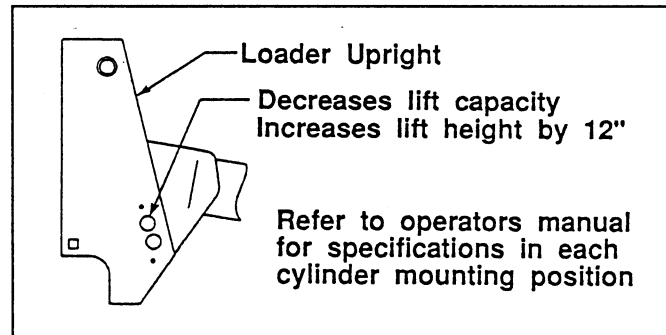
WARNING: Be sure to support loader using an overhead hoist. Installed lift cylinders will not support loader in upright position. Boom may fall causing serious personal injury.

2. Loop nylon strap around center of boom crossmember. Using overhead hoist to support loader, remove cap screws and pins which secure shipping braces.



3. Install lift cylinders (17), with base end toward front and hydraulic ports toward top, using hardware previously removed. **See chart for optional cylinder placement.**

NOTE: Pin rod end into loader upright first, then pin base end into loader boom.



4. Disconnect lift cylinder hoses from steel oil lines one at a time to avoid error when reconnecting.

NOTE: Lift cylinder hoses must be free to turn while they are being connected to lift cylinders.

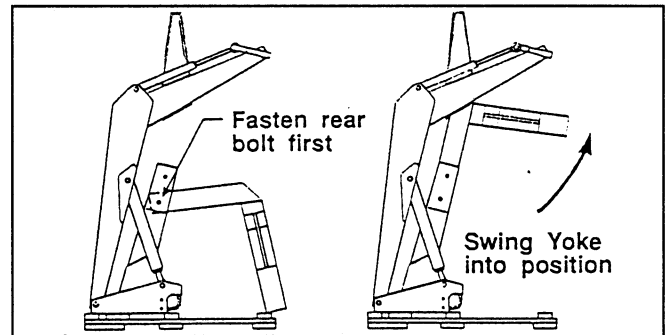
5. Connect hoses to lift cylinders. Reconnect hoses to steel oil lines.

INSTALLING LOADER TO MOUNTING BRACKETS



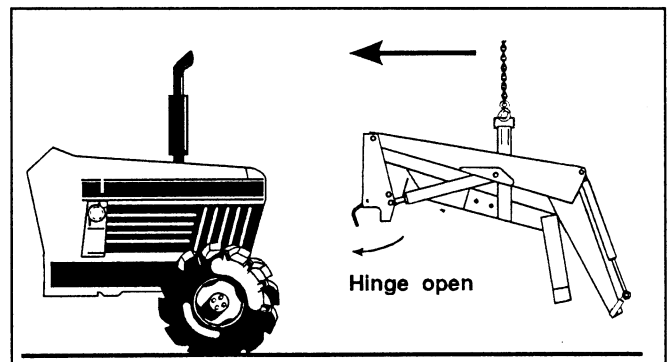
WARNING: To avoid injury during installation of quick attach loader, do not permit bystanders within ten feet of loader.

1. Install yoke assembly (14) using 3/4 x 2-1/2 cap screws (12) and 3/4 lock nuts (13). Install rear cap screws first and swing yoke into position, then install front cap screws.

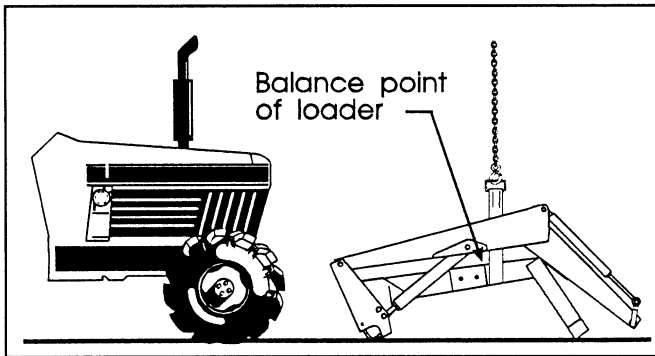


NOTE: Hardware connecting yoke to loader sideframes should be snug but do not torque completely. After loader has been mounted to tractor and aligned with midmounting brackets and front mounting brackets, torque hardware to 239-262 ft. lb.

2. Remove hardware securing loader to pallet. Using overhead hoist, lower loader from vertical shipping position to horizontal position (scraps of cardboard may be used to protect paint).
3. Install hose or valve kit to tractor and loader. Refer to assembly manual provided for installation instructions.
4. Reposition overhead hoist by looping nylon strap around yoke near loader side frames at balance point of loader.
5. Using overhead hoist, raise loader until side frame uprights will clear front tires. Remove locknut and washer from loader hinge and swing each hinge open.



INSTALLING LOADER TO MOUNTING BRACKETS (Continued)



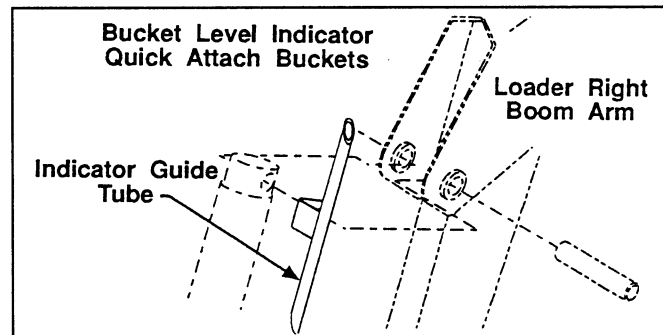
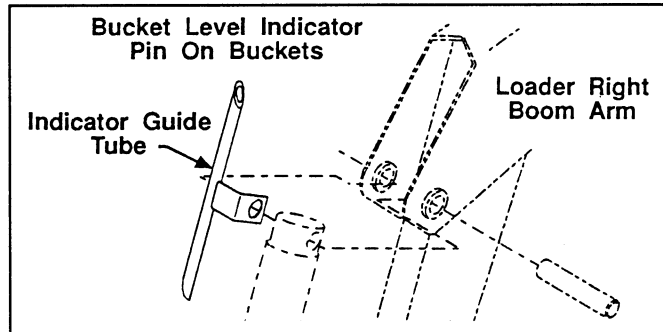
6. Position loader so hinges hook over mid mounting tubes and yoke tube fits inside front mounting bracket.
7. Clamp hinges to midmounting tubes with 3/4 flat washers and 3/4 flex-lock nuts (supplied with loader).
IMPORTANT: Be sure to use flex-lock nuts to clamp hinge. Tighten flex-lock nuts against hinge securely, but not to more than 125 ft.-lb. torque.
8. Adjust front wheel tread settings or steering stops, if necessary to prevent interference between tires and loader. Refer to tractor operator's manual for adjustment procedures.

INSTALLING BUCKET OR OPTIONAL ATTACHMENT

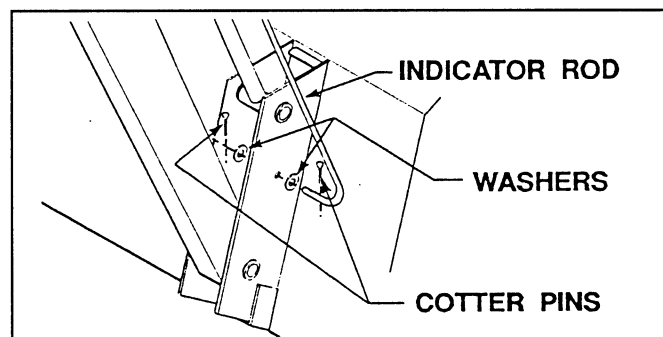
Refer to loader operator's manual for instructions on installing bucket or optional attachment.

INSTALLING BUCKET LEVEL INDICATOR

1. Attach indicator guide tube to cylinder pin. Guide tube is positioned to outside of boom for pin on attachments and inside of boom when quick attach device is used.



2. Slide bucket level indicator rod through guide tube. Attach other end of rod with 1/8 x 1 cotter pins and 3/8 flat washers. If pin on bucket is used, attach lower end of rod to bucket ear. If quick attach device is used, attach lower end of rod to quick attach device.



3. Locate tractor and loader on level surface. With bottom of bucket resting on surface, cut off excess rod flush with end of guide tube or paint exposed rod a contrasting color.