

Keep With Loader Operator's Manual

THIRD FUNCTION SOLENOID SELECTOR VALVE KIT

Third function valve kit can be installed using tools ordinarily available. References to right or left, forward or rearward, refer to position of operator sitting in tractor seat facing front of tractor.



WARNING: Escaping hydraulic fluid under pressure can penetrate skin causing serious injury.

- *DO NOT* use your hands to check for leaks. Use a piece of cardboard or paper to search for leaks.
- Stop engine and relieve pressure before connecting or disconnecting lines.
- Tighten all connections before starting engine or pressurizing lines.

If any fluid is injected into skin, obtain medical attention immediately or gangrene may result.

INSTALLING THIRD FUNCTION VALVE KIT (Figure 2)

1. Lower level loader to ground and shut off engine. Relieve hydraulic pressure by activating control levers several times.

NOTE: Loaders which have auxiliary step on boom crossmember require relocating step approximately 3 inches toward left arm to allow room to install mounting bracket (2).

2. Place mounting bracket (2) over oil lines on crossmember so top valve mounting holes are toward left. Position selector valve (1) on bracket so electrical solenoid is toward right boom arm. Turn electrical posts on solenoid toward rear. Fasten selector valve (1) to mounting bracket (2) using 1/4 x 2 cap screws (4) and 1/4 lock nuts (5).

3. Install 3/4 x 90° extra long elbow fitting (6) and 3/4 x 90° elbow fitting (7) into top and rear ports of selector valve (1). On top ports, long elbow fitting (6) goes in left port and points toward right. On rear ports long elbow fitting (6) goes into right port and points toward left.

4. Disassemble plug in connector (32). Install one end of two strand gray wire (10) into plug-in connector (32). Connect one strand of wire to top post on plug-in connector and connect other strand of wire to bottom post on plug-in connector. Install connector (32) to selector valve (1). Use small machine screw to secure connector (32) to selector valve (1).

NOTE: Only top and bottom electrical posts on selector valve are used.

5. Disconnect left bucket cylinder hoses from steel oil lines. Connect street tees (14) into oil lines and reconnect hoses to tees.
6. Connect 1/2 x 26 hose (23) and 1/2 by 24 hose (35) from selector valve rear ports to street tees (14).
7. Position mounting bracket (2) and valve (1) along oil lines so 1/2 x 26 hose (23) and 1/2 x 24 hose (35) lay well. Using bracket (2) as a guide, locate and drill four 3/16 mounting holes into top of crossmember.
8. Fasten selector valve (1) and mounting bracket (2) to top of loader crossmember using 1/4 x 1 self tapping screws (13).
9. Install 3/4 x 3/8 adapter fittings (8), dust plugs (31) and female 3/8 quick couplers (9) into front ports of selector valve (1).
10. Install mounting bracket cover (3) using 1/4 x 1 self tapping screws (13).
11. Connect 1/2 x 90 hoses (12) to top ports of selector valve.

INSTALLING THIRD FUNCTION VALVE KIT**(Continued) (Figure 2)**

If loader is equipped with self leveling valve go to instruction number 13.

12. Disconnect bucket cylinder hoses from steel oil lines at rear of loader boom arm (hoses come from tractor rear quick couplers or optional control valve). Route 1/2 x 90 hoses (12) along steel oil lines and connect hoses to ends of bucket cylinder hoses. Install caps (15) into ends of bucket cylinder steel oil lines.
13. If loader is equipped with self leveling valve, route 1/2 x 90 hoses (12) along steel oil lines. Remove two tees and elbows at end of bucket cylinder steel oil lines where hoses from self leveling valve are connected. Reconnect hoses from self leveling valve directly into corresponding steel oil lines (Figure 1). Connect 1/2 x 90 hoses (12) to hoses from tractor rear quick couplers or optional control valve.
14. Route gray wire (10) up loader boom arm and down upright to area near loader quick attach hinge. Secure 1/2 x 90 hoses (12) and gray wire (10) to steel oil lines using 1/2" plastic tie straps (16). Leave an additional 1 or 2 feet of slack and cut off extra wire.
15. Install grommet (17) into male portion (with posts) of two pole connector (26). Unscrew cap on this portion of connector and push wire from selector valve through grommet.

HINT: *Cut wire at an angle or use brake fluid or soap as lubricant to ease wire insertion.*
16. Cut back gray covering about 1/4" and strip inner wires to gray outer covering. Install ends of wire into 2 pole connector (26) and screw on cap.
17. Fasten switch bracket (18) and clamp (19) to bucket control lever on tractor using #4-40 x 3/4 screws (20). Locate holder so switch (21) can be activated with ease. If lever shank is round and less than 1/2" in diameter, it will be necessary to use shorter screws (#4-40 x 5/8)(34) so screws don't protrude into switch slot area of holder.

NOTE: *If switch holder will not fit because of odd shape of handle, tape switch directly to control lever using a quality electrical tape good to 0°F (3M Scotch Super 33+ or Super 88).*

18. Slide switch (21) into switch holder (18). Secure switch to holder using 1/4 set screw (22).
19. Connect switch wires to end of two strand gray wire (10) using two butt connectors (11). Leaving enough slack for handle movement, secure wires to handle.
20. Route gray wire (10) to tractor battery. Near positive post of battery, slit gray covering on wire and cut one strand. Connect end of wire from switch to positive battery post using a butt connector (11), fuse holder (24), fuse (25) and 3/8 terminal (33). Connect other end of wire to ground using 3/8 terminal (33).
21. Continue routing gray wire to 2 pole plug connector (26) near loader upright hinge. Cut the gray wire and install to female portion of plug using procedure outlined in steps 15 and 16.
22. Secure gray wire where needed using 3/16 tie straps (27) and tube clamp (28).
23. Install blue and red identification rings (29 & 30) to third function attachment hoses and to quick couplers on selector valve.

OPERATING THIRD FUNCTION VALVE

After installing third function attachment onto loader, connect hoses to third function valve. Optional accessory will function when button on switch is activated and lever is moved as if to activate bucket cylinders.

NOTE: *To insure proper shifting of selector valve, always bring bucket control lever to neutral before pressing switch button. Selector valve may not shift while 12 GPM or more oil is flowing through it.*

715740001

2-6181

715740006

2-7005

PARTS LIST - THIRD FUNCTION VALVE KIT

Item	Part No.	Description	Qty.
1	41803	VALVE, Double Selector	1
2	41791	BRACKET, Mounting	1
3	41793	COVER, Valve, Assembly	1
4	G180044	SCREW, Cap, 1/4-20 x 2	2
5	G9424215	NUT, Hex, 1/4-20	2
6	41796-1	FITTING, Elbow, 3/4-16 x 3/4-16 90°, (Extra Long)	2
7	32845-2	FITTING, Elbow, 3/4-16 x 3/4-16 90°	2
8	39280-7	FITTING, Adapter, 3/4-16 O-Ring x 3/8 NPT	2
9	6147-4	FITTING, Coupler, Female	2
10	39436	WIRE, 2 Strand, Gray	360 in.
11	22727-	CONNECTOR, Wire, 14 Ga.	3
12	41952-1	HOSE, 1/2 x 90"	2
13	40253-2	SCREW, Hex Head Self Tapping	8
14	37850-2	TEE, Swivel Nut Run 3/4-16	2
15	G9403373	CAP, End, 7/8-14 JIC	2
16	8137-3	STRAP, Plastic Adjustable, 1/2"	5
17	6079-8	GROMMET, Rubber	2
18	41799	BRACKET, Switch	1
19	41798	PLATE, Clamp	1
20	41800-2	SCREW, Machine, #4-40 x 3/4	4
21	41801	SWITCH, Push Button	1
22	G139011	SCREW, Set, 1/4-28 x 3/8 Square head	1
23	40350-5	HOSE, 1/2 X 26"	1
24	41805	HOLDER, Fuse	1
25	41804-1	FUSE, 10 AMP	1
26	41797	CONNECTOR, Two Pole	1
27	8137-1	STRAP, Adjustable, Plastic, 3/16"	4
28	8222-1	CLAMP, Tube, 1/2	1
29	36240-5	BAND, Plastic, Spiral, Blue	2
30	36240-6	BAND, Spiral, Plastic, Red	2
31	4838-6	PLUG, Dust	2
32	41802	CONNECTOR, 2 Pole	1
33	24082-5	TERMINAL, 3/8 x 14 Ga.	2
34	41800-1	SCREW, Machine, #4-40 x 5/8	4
35	40350-4	HOSE, 1/2 x 24"	1

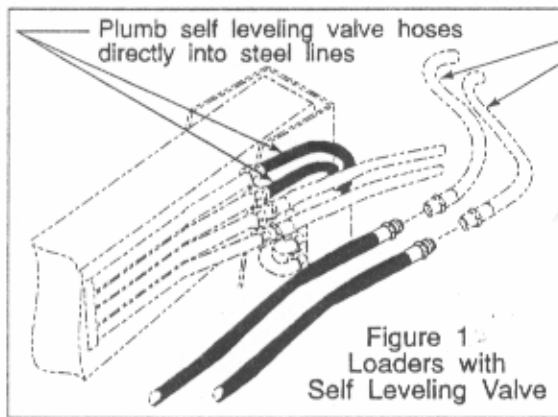
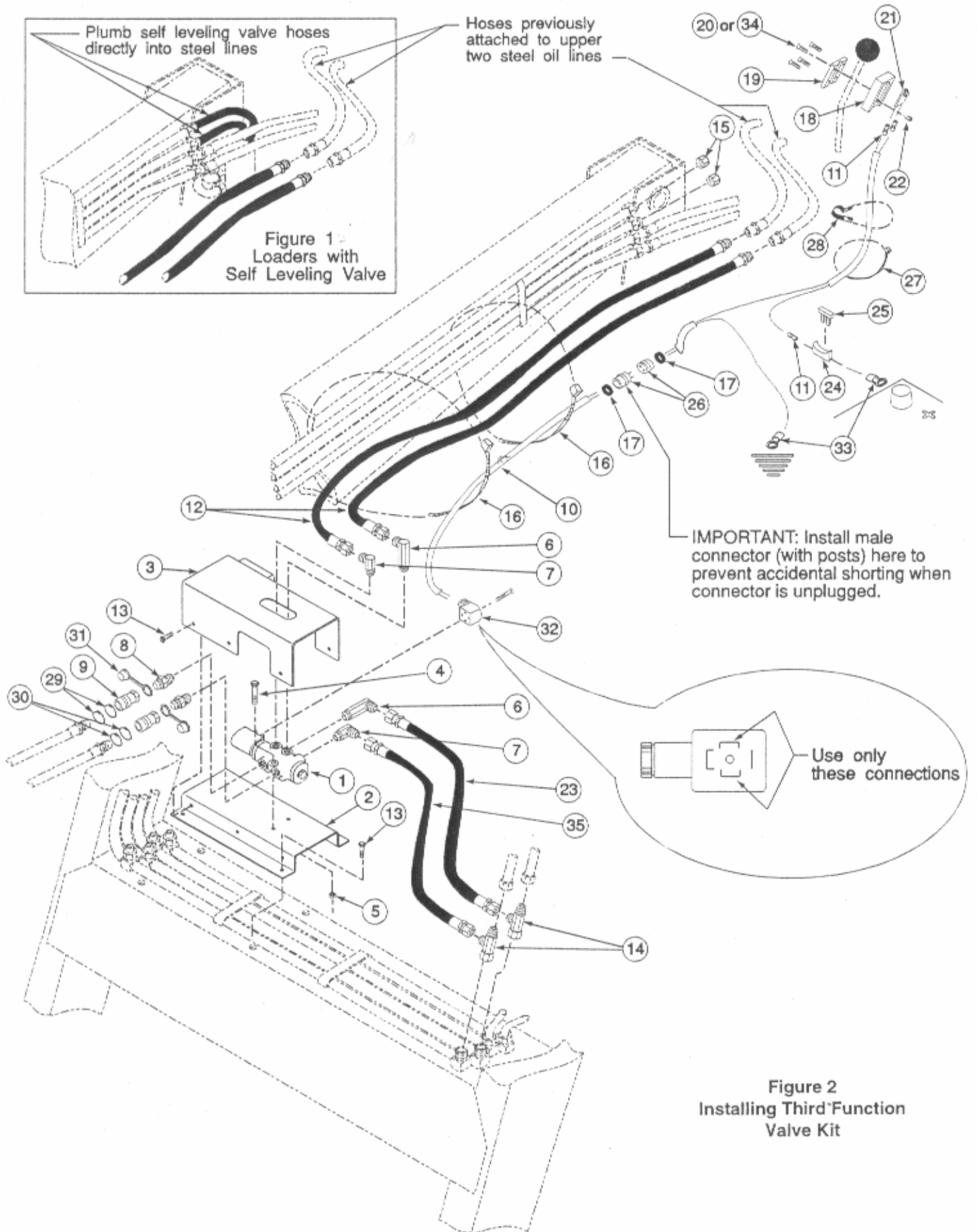


Figure 1
Loaders with
Self Leveling Valve

Hoses previously
attached to upper
two steel oil lines



IMPORTANT: Install male
connector (with posts) here to
prevent accidental shorting when
connector is unplugged.

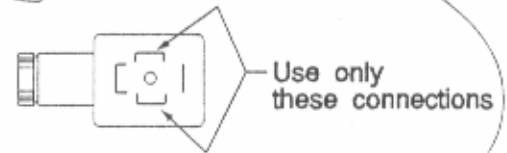


Figure 2
Installing Third Function
Valve Kit

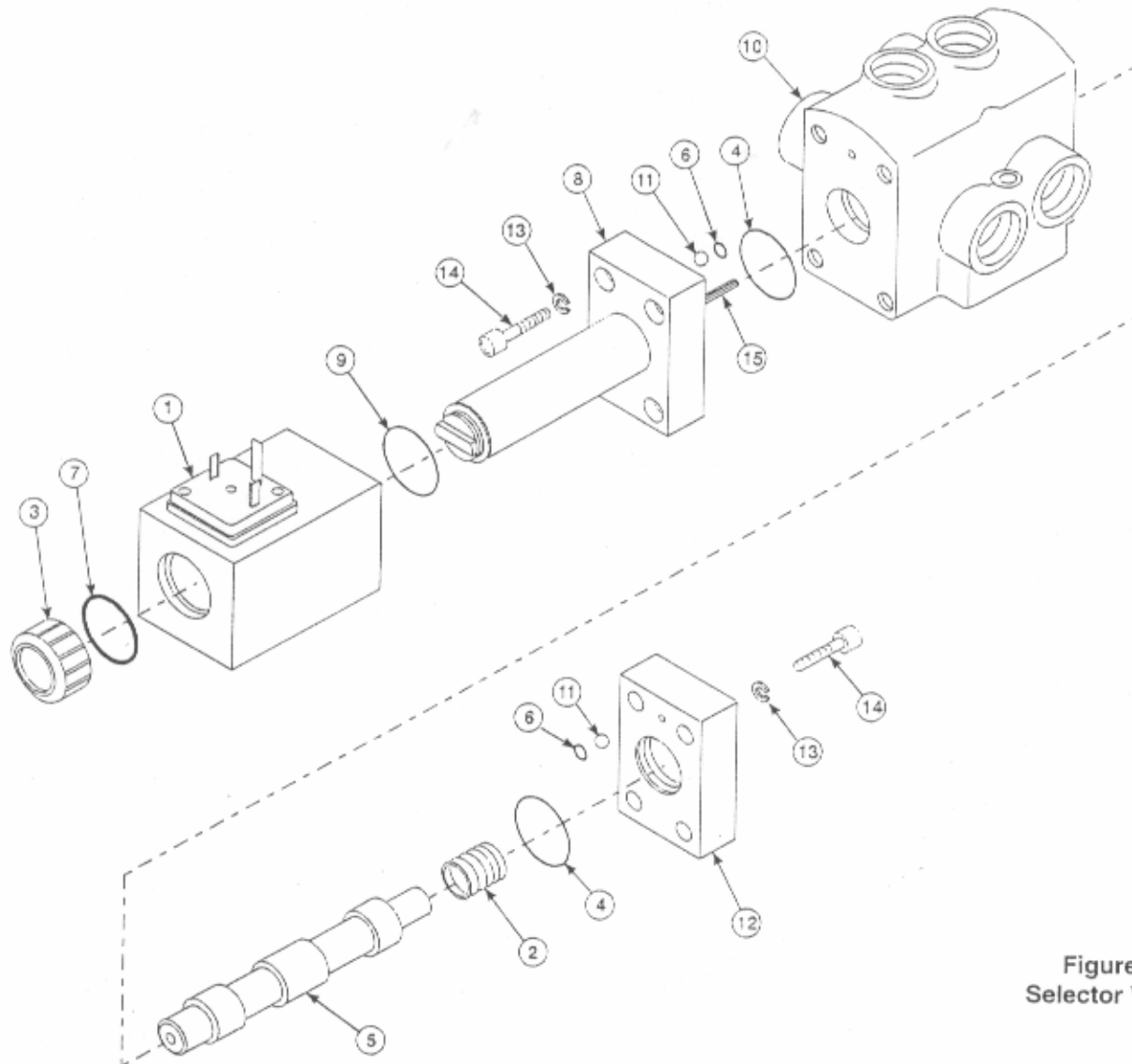


Figure 3
Selector Valve

REPAIR PARTS LIST - SELECTOR VALVE - SALAMI DF-06/6-CE-12-S

Item	Part No.	Description	Qty.
1	44019	Replacement Solenoid	1
2	44018	Spring	1
	44020	SEAL KIT- Contains Item #4 (2 ea.), Item #6 (2 ea.) and item #9 (1 ea.)	1

SELECTOR VALVE SERVICE (Figure 3)

1. Unscrew cap (3) from end of plate assembly (8).
2. Slide solenoid (3) off end plate (8).
3. Remove socket head cap screws (14) and lock washers (13) from both ends of valve body (10).



CAUTION: Be sure actuating shaft (15) does not slide out of end plate (8).

4. Remove end plates (8 & 12) from valve body (10). Replace spring (7) or o-rings as necessary.

Note: Lubricate new o-rings with oil before reassembly.

5. Assembly is reverse of disassembly.

2-6181

2-7005

715740001

715740006

INSTALLATION INSTRUCTIONS