



TURBO 120

ROTARY CUTTER

Rev 10-12

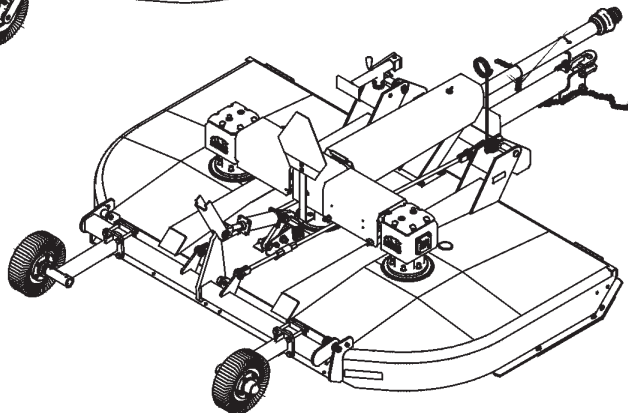
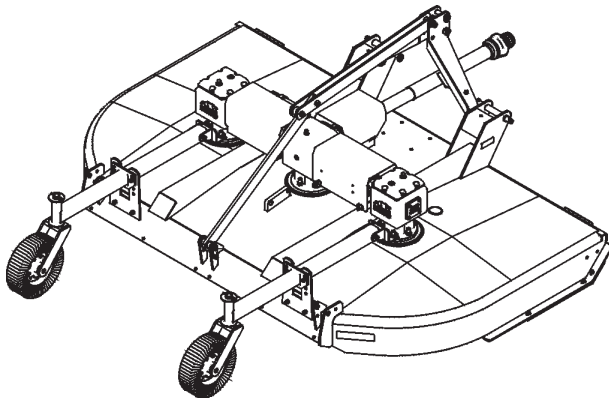
S/N 10200 -CURRENT

Part No. 00778487P

PART'S MANUAL



An Operator's Manual was shipped with the equipment in the Manual Canister. This Operator's Manual is an integral part of the safe operation of this machine and must be maintained with the unit at all times. **READ, UNDERSTAND, and FOLLOW** the Safety and Operation Instructions contained in this manual before operating the equipment. If the Operator's Manual is not with the equipment, contact your dealer or Servis-Rhino (800-446-5158) to obtain a Free copy before operating the equipment.



ATENCIÓN!

LEA EL INSTRUCTIVO

Si No Lee Ingles, Pida Ayuda a Alguien
Que Si Lo Lea Para Que le Traduzca las
Medidas de Seguridad.



RHINO[®]

1020 S. Sangamon Ave.
Gibson City, IL 60936
800-446-5158

Email: parts@servis-rhino.com

© 2006 Alamo Group Inc.



TO THE OWNER/OPERATOR/DEALER

All implements with moving parts are potentially hazardous. There is no substitute for a cautious, safe-minded operator who recognizes the potential hazards and follows reasonable safety practices. The manufacturer has designed this implement to be used with all its safety equipment properly attached to minimize the chance of accidents.

BEFORE YOU START!! Read the safety messages on the implement and shown in your manual.
Observe the rules of safety and common sense!



DANGER

FAILING TO FOLLOW SAFETY MESSAGES AND OPERATING INSTRUCTIONS CAN CAUSE SERIOUS BODILY INJURY OR EVEN DEATH TO OPERATOR AND OTHERS IN THE AREA.

<p>1.</p>	<p>2. NO RIDERS, NO CHILDREN OPERATORS</p>	<p>3. USE SAFETY SHOES, HARD HAT, SAFETY GLASSES, SEAT BELTS, & ROPS</p>	<p>4. BLOCK UP SECURELY BEFORE WORKING UNDER.</p>
-----------	--	--	---

- Study and understand Operator's Manuals, Safety Signs, and Instructional Decals for tractor & flail mower to prevent misuse, abuse, & accidents. Practice before operating mower in a confined area or near passersby.
 - Learn how to stop engine suddenly in an emergency. Be alert for passersby and especially children.
- Allow no children on or near implement or tractor. Allow no riders on tractor or implement. Falling off can cause serious injury or death from being runover by tractor or mower or contact with Flail Mower Blades.
- Operate only with tractor having Roll-Over Protective Structure (ROPS) and with seatbelt fastened securely and snugly to prevent injury and possible death from falling off or tractor overturn. Personal Protective Equipment such as Hard Hat, Safety Glasses, Safety Shoes, and Ear Plugs are recommended.
- Block up or support raised machine and all lifted components securely before putting hands or feet under or working underneath any lifted component to prevent crushing injury or death from sudden dropping or inadvertent operation of controls. Make certain that area is clear before lowering or folding.
- Before transporting, put Lift Lever in detent or full-lift position. Install Transport Safety Devices securely on folding implements. Slow down when turning and on hillsides.
 - Install **Restrictor in folding circuit to slow down lowering and unfolding if action is faster than is desirable.
- Make certain that SMV sign, Warning Lights, and Reflectors are clearly visible. Follow local traffic codes.
- Never operate with Flail Mower or Folding Section raised if passersby, bystanders or traffic are in the area to reduce possibility of injury or death from objects thrown by Blades under Shields or implement structure.
- Before dismounting, secure flail mower in transport position or lower to ground.
 - Put tractor in park or set brake, disengage PTO, stop engine, remove key, and wait until noise of rotation has ceased to prevent entanglement in rotating parts which may cause injury or death.
 - Never mount or dismount a moving vehicle. Crushing from runover may cause injury or death.

<p>5. TRANSPORT SAFELY, LOCK UP.</p>	<p>6. USE SMV, LIGHTS, & REFLECTORS.</p>	<p>7. DO NOT OPERATE WITH MOWER OR WING RAISED.</p>	<p>8. DO NOT MOUNT OR DISMOUNT WHILE MOVING.</p>
--------------------------------------	--	---	--

Read and understand the complete Warranty Statement found in this Manual. Fill out the Warranty Registration Form in full and return it within 30 Days. Make certain the Serial Number of the Machine is recorded on the Warranty Card and on the Warranty Form that you retain. The use of "will-fit" parts will void your warranty and can cause catastrophic failure with possible injury or death.

WARRANTY INFORMATION

002369

PARTS SECTION

PARTS ORDERING GUIDE

The following instructions are offered to help eliminate needless delay and error in processing purchase orders for the equipment in this section.

1. The Parts Section is prepared in logical sequence and grouping of parts that belong to the basic machine featured in this manual. Part Numbers and Descriptions are given to help locate the parts and quantities required.
2. The Purchase Order must include the name and address of the person or organization ordering the parts, who should be charged, and if possible, the serial number of the machine for which the parts are ordered.
3. The Purchase Order must clearly list the quantity of each part, the complete and correct part number (be sure to include all periods), and the basic name of the part.
4. The Manufacturer reserves the right to substitute parts where applicable.
5. Some parts are unlisted items which are special production items not normally stocked and are subject to special handling. Request a quotation for such parts before sending a Purchase Order.
6. The Manufacturer reserves the right to change prices without prior notice.

NOTE: Please refer to The Safety Section in the front of this Manual for the proper Part Number when ordering Replacement Safety Decals.



For maximum safety and to guarantee optimum product reliability, always use genuine Servis-Rhino Parts. The use of inferior replacement parts may cause premature or catastrophic failure which could result in serious injury or death. Direct any questions regarding parts to:

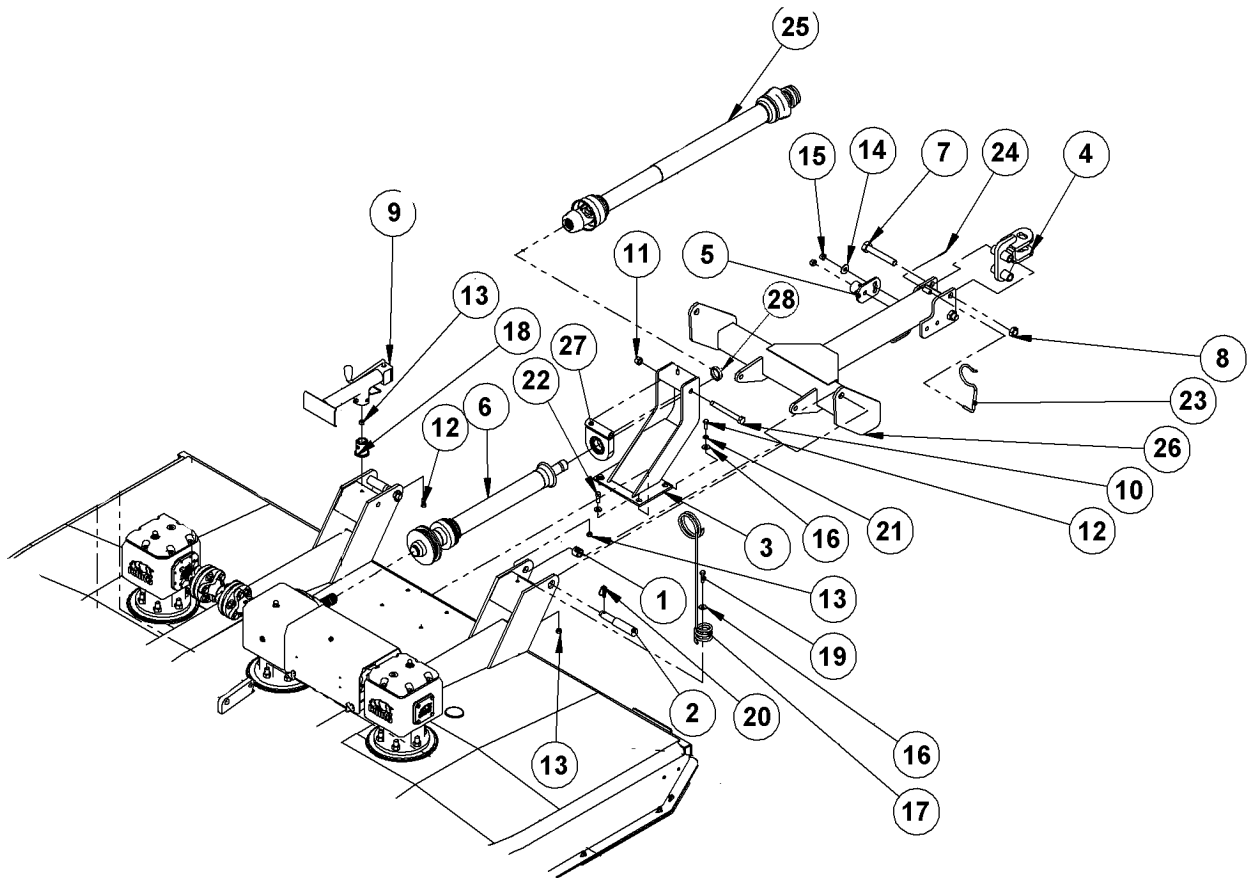


RHINO®
1020 S. Sangamon Ave.
Gibson City, IL 60936
800-446-5158
Email: parts@servis-rhino.com

PART NAME INDEX

A-FRAME ASSEMBLY	6
AXLE ASSEMBLY HYDRUALIC OFFSET MODEL	8
AXLE ASSEMBLY Rev 03-05	7
CASTER WHEEL & FORK ASSEMBLY	28
CHAIN GUARD ASSEMBLY-REAR	32
CHAINGUARD ASSEMBLY-FRONT	31
CONTROL ROD ASSEMBLY	10
DEFLECTOR ASSEMBLY- FRONT	33
DEFLECTOR ASSEMBLY-REAR Rev 01-05	34
DISHPAN ASSEMBLY Rev 10-04	21
DIVIDER GEARBOX 1000 RPM Rev 01-05	25
DIVIDER GEARBOX 540 RPM Rev 01-05	24
DIVIDER SHIELD ASSEMBLY Rev 10-04	20
DRIVELINE ASSEMBLY - CV	13
DRIVELINE ASSEMBLY - JACKSHAFT S/N 10001 - 10199 PUB 11-05	16
DRIVELINE ASSEMBLY - JACKSHAFT S/N 10200 -CURRENT PUB 11-05	15
DRIVELINE ASSEMBLY PULL TYPE 1000 RPM	14
DRIVELINE ASSEMBLY PULL TYPE 540 RPM	17
DRIVELINE ASSEMBLY- LIFT TYPE (540 & 1000 RPM)	12
DRIVELINE OUTER	26
FOAM FILLED USED AIRCRAFT TIRE	30
GEARBOX ASSEMBLY	22
HITCH ASSEMBLY (HYDRUALIC OFFSET MODEL)	9
HYDRUALIC CYLINDER	11
SHIELD ASSEMBLY	19
SKID SHOE ASSEMBLY	35
SLIP CLUTCH ASSEMBLY Rev 09-05	18
SPRING POD ASSEMBLY *(OPTIONAL)*	36
TAILWHEEL ASSEMBLY-LIFT MODEL	27
TONGUE ASSEMBLY Rev 09-04	4
WHEEL HUB ASSEMBLY	29

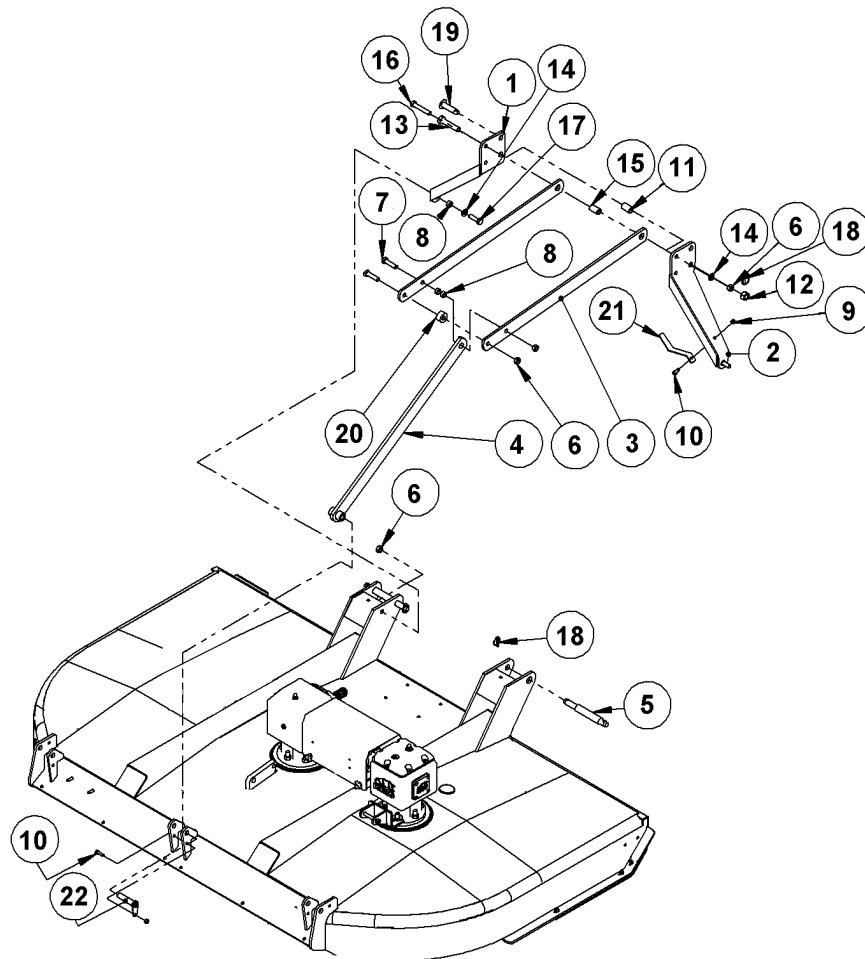
TONGUE ASSEMBLY Rev 09-04



TONGUE ASSEMBLY Rev 09-04

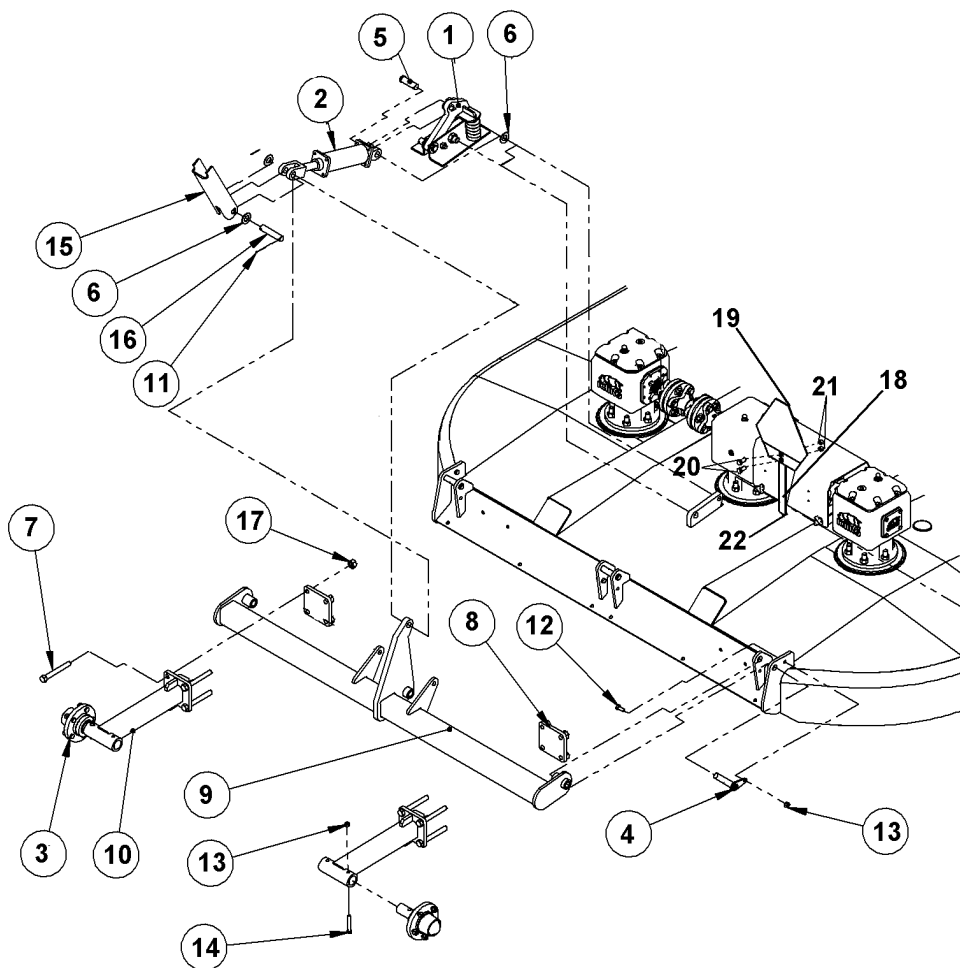
ITEM	PART NO.	QTY.	DESCRIPTION
1	00761890	2	BUSHING
2	00758146	2	PIN TONGUE PIVOT
3	00778058	1	CARRIER MOUNT WELDMENT
4	00778053	1	CLEVIS WELMENT
5	00760941	1	JACK TUBE MOUNT WELDMENT
6	00778221	1	JACK SHAFT
7	00754107	2	BOLT
8	02030300	2	NUT TOPLOCK 1" NC PLB
9	00772391	1	PARKING JACK
10	00752671	1	BOLT
11	00037200	2	LOCKNUT
12	02030700	6	BOLT
13	00001800	11	TOPLOCKNUT
14	00756077	1	HARDENED WASHER
15	00695100	2	TOPLOCK NUT
16	00002700	6	FLATWASHER
17	02965484	1	HOSE BRACKET, SPRING BASE
18	00778524	1	JACK MOUNT TUBE WLDMT.
19	00749130	1	BOLT
20	2196	2	CLIP LYNCH PIN
21	00001300	2	LOCKWASHER
22	00748823	2	BOLT
23	1431565	1	DRIVELINE HOLDER
24	40010000	1	COTTER PIN
25	00778130	1	DRIVELINE, MAIN
26	00777459	1	TONGUE WELDMENT
27	00775006A	1	BEARING ASSEMBLY
*	00767705	1	SNAP RING JACKSHAFT BEARING
*	00764417	1	BEARING,BALL 1-1.77IDX3.346OD
28	00778735	1	SPACER

A-FRAME ASSEMBLY



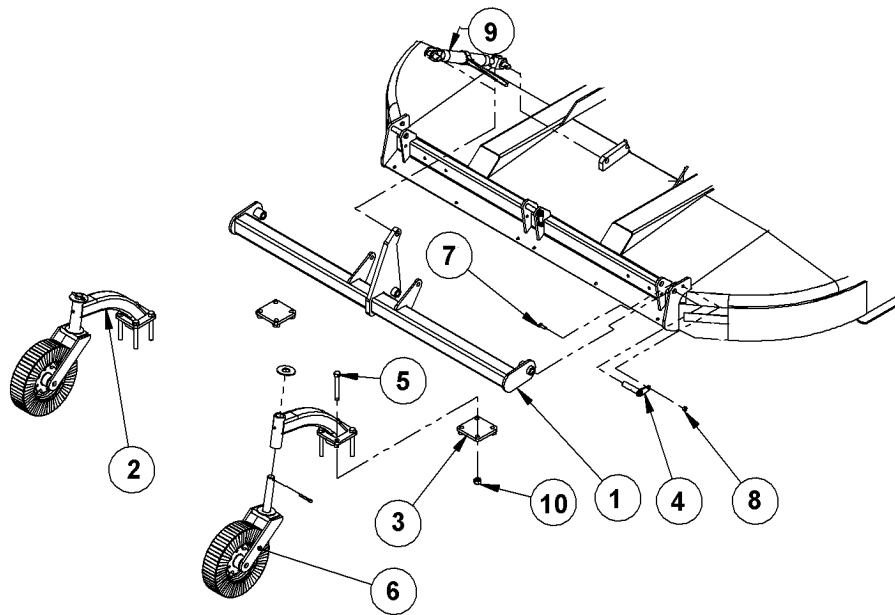
ITEM	PART NO.	QTY.	DESCRIPTION
1	0758550020	1	A-FRAME WELDMENT L.H.
2	0758550010	1	A-FRAME WELDMENT R.H.
3	00778496	2	REAR BRACE
4	00778084	1	REAR BRACE WELDMENT
5	69141	2	HITCH PIN CAT II & III
6	00037200	5	LOCKNUT 3/4 NC PLB
7	00007800	2	BOLT
8	0758550070	4	BUSHING
9	00001800	10	TOPLOCKNUT
10	00748823	10	BOLT
11	0758550031	1	BUSHING
12	5JRC16140	1	LOCKNUT
13	7AH5161436	1	BOLT
14	5312316	3	WASHER
15	0758550030	1	SPACER
16	00009500	1	BOLT
17	00037100	2	BOLT
18	2196	3	CLIP LYNCH PIN
19	3730110M	1	PIN-TOP LINK
20	00778495	1	SPACER
21	00778651	1	DRIVELINE HOLDER BRKT.
22	00778185	1	AXLE PIVOT PIN

AXLE ASSEMBLY Rev 03-05



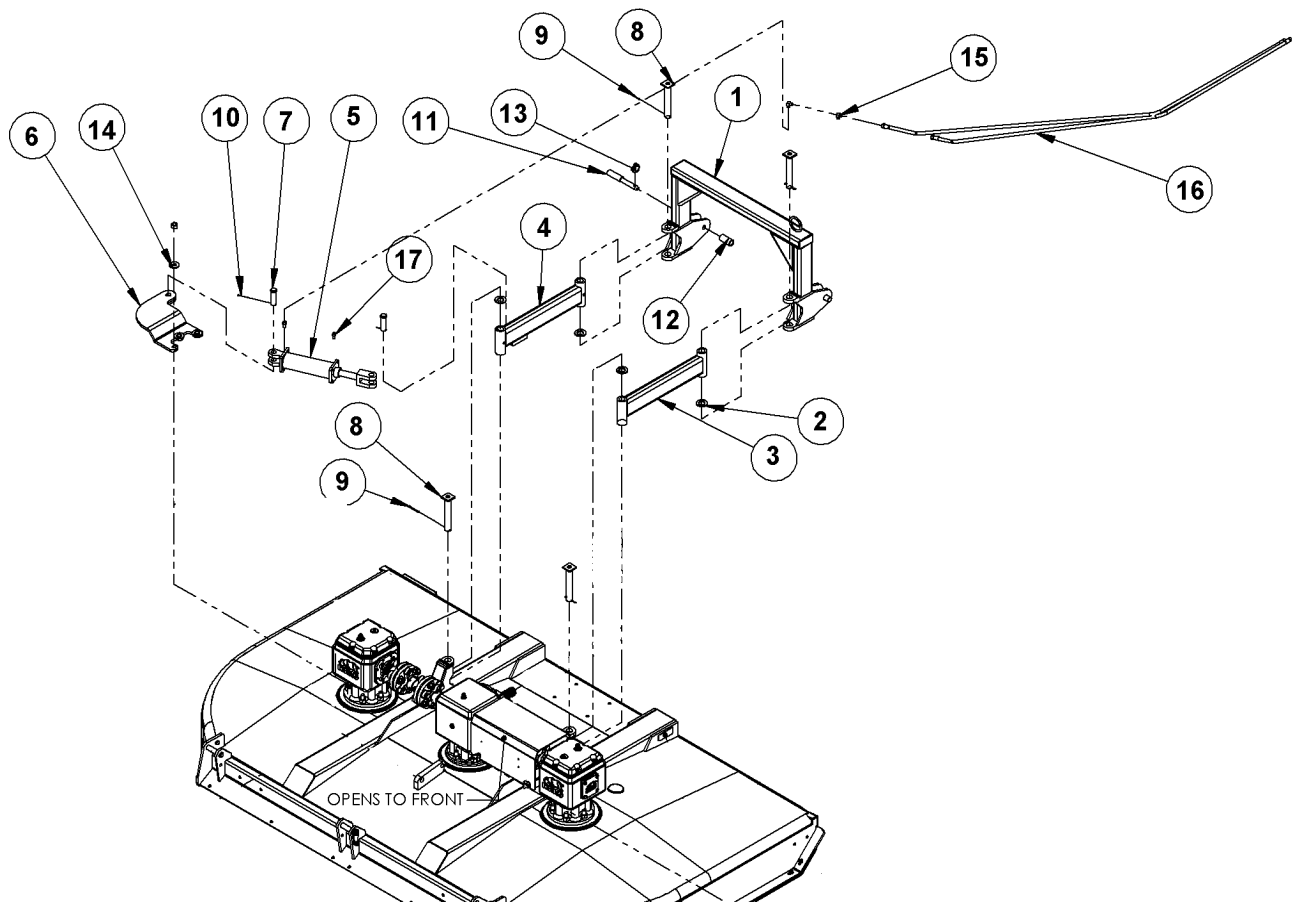
ITEM	PART NO.	QTY.	DESCRIPTION
1	00778158	1	SPING POD ASSEMBLY *(OPTIONAL)*
2	8727A	1	HYDRUALIC CYLINDER
3	00775616A	2	SPINDLE HUB ASSEMBLY
4	00778185	3	AXLE PIVOT PIN
5	8354	1	PIN HYD. CYLINDER
6	02822500	3	FLATWASHER
7	02959587	8	BOLT
8	00778062	2	AXLE ARM PLATE
9	00777455	1	AXLE WELDMENT
10	00778063	2	AXLE ARM WELDMENT
11	00606000	3	COTTER PIN
12	02030700	6	BOLT
13	00001800	11	TOPLOCKNUT
14	00764375	2	BOLT
15	00777963	1	TRANSPORT LOCK PLATE
16	103266	1	CYLINDER PIN
17	00037200	8	LOCKNUT
18	00778530	1	SMV BRACKET MOUNT PLATE
19	03200347	1	SMV SIGN
20	10058000	2	BOLT (TORQUE TO 250 POUNDS)
21	02959924	2	NUT
22	00001800	1	LOCKNUT TLM 1/2 NC PLB

AXLE ASSEMBLY HYDRUALIC OFFSET MODEL



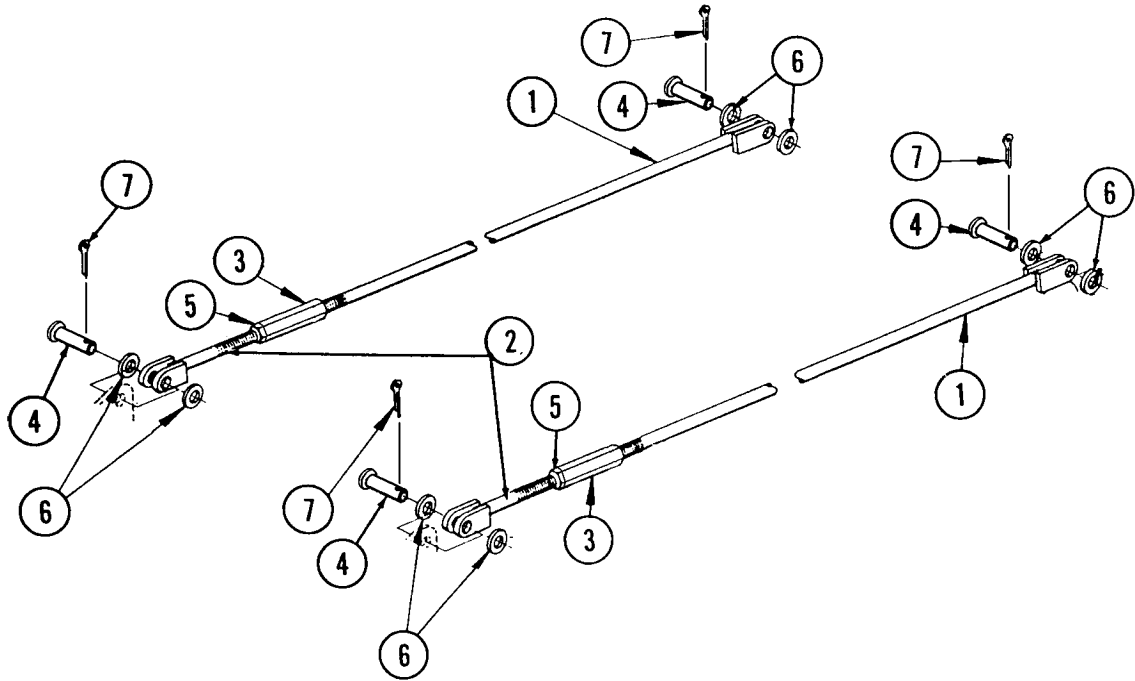
ITEM	PART NO.	QTY.	DESCRIPTION
1	00777455	1	AXLE WELDMENT
2	00778518	2	CASTER ARM WELDMENT
3	00778062	2	AXLE ARM PLATE
4	00778185	3	AXLE PIVOT PIN
5	02959587	8	BOLT
6	00776220	2	CASTER WHEEL ASSEMBLY
7	02030700	3	BOLT
8	00001800	5	TOPLOCKNUT
9	00554600	1	RATCHET JACK ASSEMBLY
10	47264-8	8	LOCKNUT

HITCH ASSEMBLY (HYDRUALIC OFFSET MODEL)



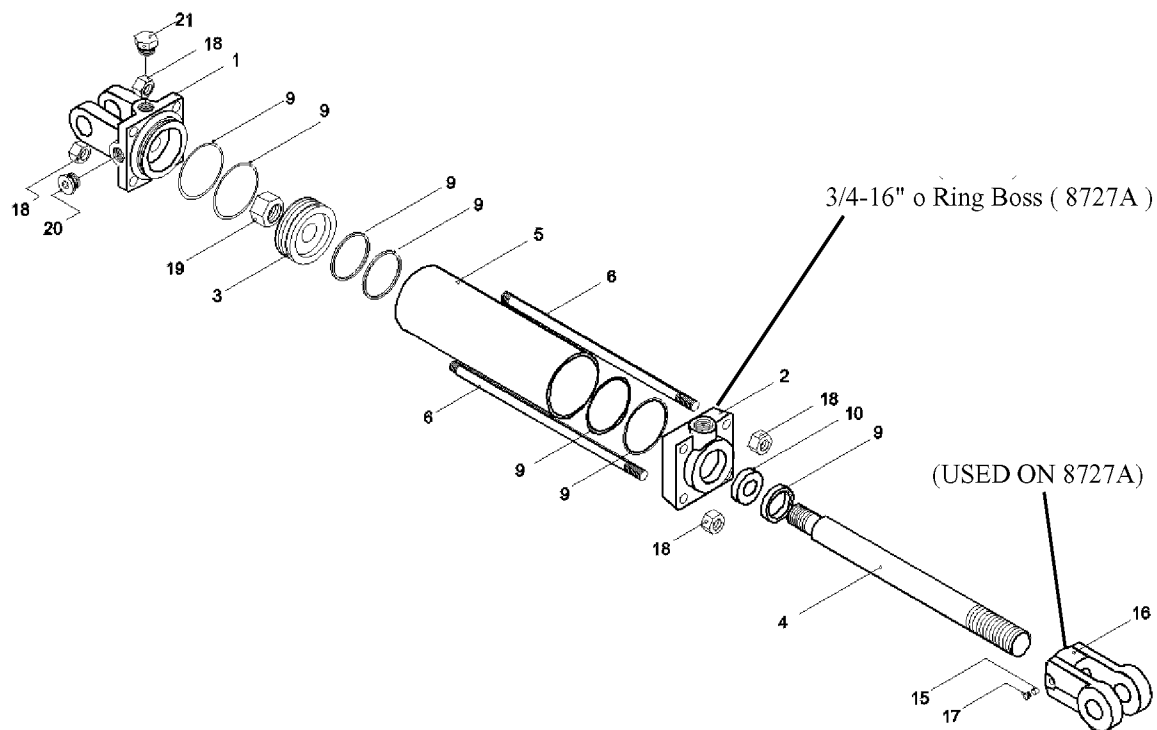
ITEM	PART NO.	QTY.	DESCRIPTION
1	00778508	1	OFFSET HITCH WELDMENT
2	00749941	4	FLATWASHER
3	00778515	1	SWING ARM WELDMENT R.H.
4	00778514	1	SWING ARM WELDMENT L.H.
5	8727A	1	HYDRUALIC CYLINDER
6	00778519	1	CYLINDER BRACKET WELDMENT
7	8354	2	PIN HYD. CYLINDER
8	00771281	4	PIVOT PIN WELDMENT
9	01422502	4	COTTER PIN
10	00606000	2	COTTER PIN
11	0781080000	2	WRIST PIN
12	00772458	2	SPACER
13	2196	2	CLIP LYNCH PIN
14	15D1200	3	WASHER
15	00606700	2	ADAPTER, HYD, ELBOW
16	0651131200	2	HOSE
17	0652141311	2	STRAIGHT ADAPTER

CONTROL ROD ASSEMBLY



ITEM	PART NO.	QTY.	DESCRIPTION
	00762147	-	CONTROL ROD ASSEMBLY
1	743031	2	CONTROL ROD, WLDT, L.H. THDS
2	00758643	2	CONTROL ROD, WLDT, R.H. THDS
3	00778159	2	NUT, ADJUSTING
4	651102	4	ROD PIN, CONTROL
5	5C1490	2	NUT, JAM
6	15B1200	8	WASHER
7	00755153	4	PIN, COTTER

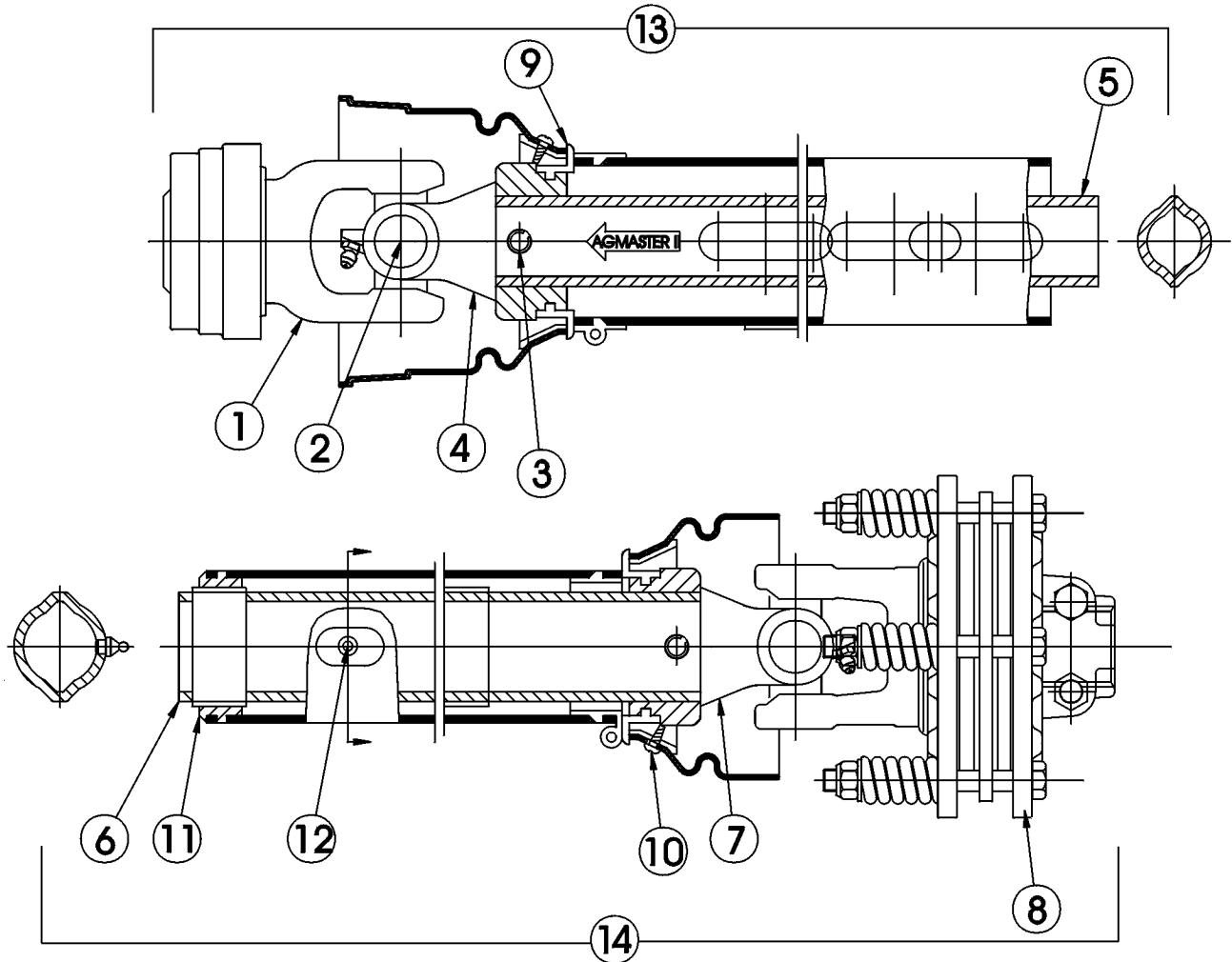
HYDRUALIC CYLINDER



ITEM	PART NO.	QTY.	DESCRIPTION
	8727A	-	COMPLTE ASSEMBLY
1	00774729	1	CLEVIS CAP
2	00774734	1	ROD CAP
3	00774730	1	PISTON
4	00774753	1	ROD
5	3047111	1	TUBE
6	3047112	4	TIE ROD
9	00774760	1	SEAL KIT
15	3047117	1	NYLON THREAD PROTECTOR
16	1917140	1	ROD CLEVIS
17	00774740	1	SET SCREW
18	33003H5C	8	TIE ROD NUT
19	5JRC12160	1	PISTON NUT
20	1917132	1	PORT PLUG
21	2417154	1	BREATHER
	651132	2REF	HOSE (NOT SHOWN)
	94514	2REF	ELBOW (NOT SHOWN)
	00768343	2REF	ADAPTER (NOT SHOWN)
	8354	2REF	PIN (NOT SHOWN)
	00606000	2REF	COTTER PIN (NOT SHOWN)

DRIVELINE ASSEMBLY- LIFT TYPE (540 & 1000 RPM)

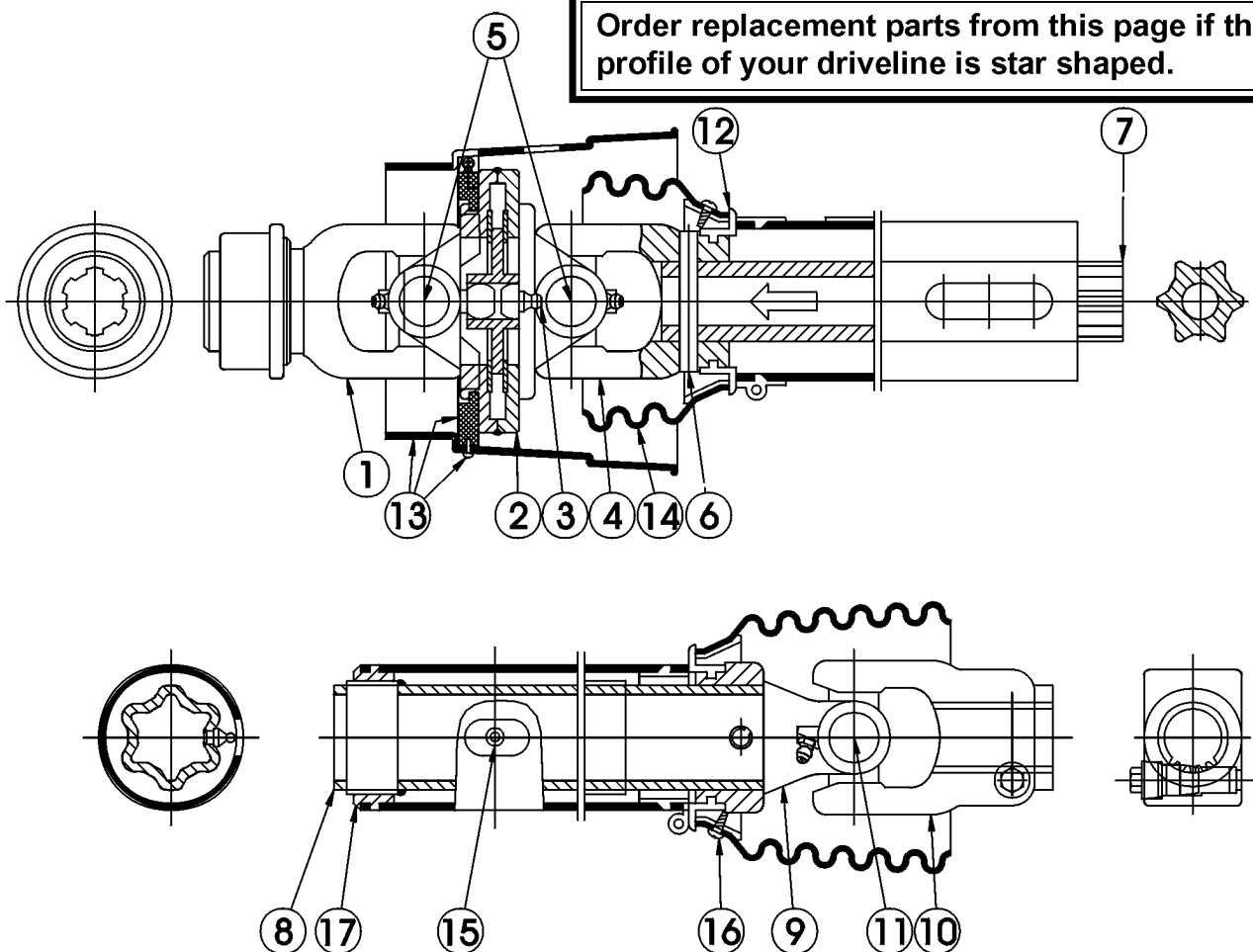
Order replacement parts from this page if the profile of your driveline is lemon shaped.



ITEM	PART NO.	QTY.	DESCRIPTION
-	00775385	-	540 RPM
	▣		007753901000 RPM
1	00775353		00761762YOKE
2	W279R		W279R CROSS & BEARING KIT
3	8384		8384 SPRING PIN
4	00775317		00775317INBOARD YOKE
5	7413		7413 INNER PROFILE
6	00775377		00775377PROFILE & SLEEVE W.A.
7	00775318		00775318INBOARD YOKE
8	00775331		00775331FRICTION CLUTCH
9	8393		8393 BEARING RING
10	4797		4797 SCREW
11	8974		8974 SUPPORT BEARING
12	1416601		1416601 ZERK
13	00775388		00775388OUTER SHIELD HALF
14	00775389		00775389INNER SHIELD HALF
15	00767954		00767953YOKE QD KIT (IN ITEM 1)

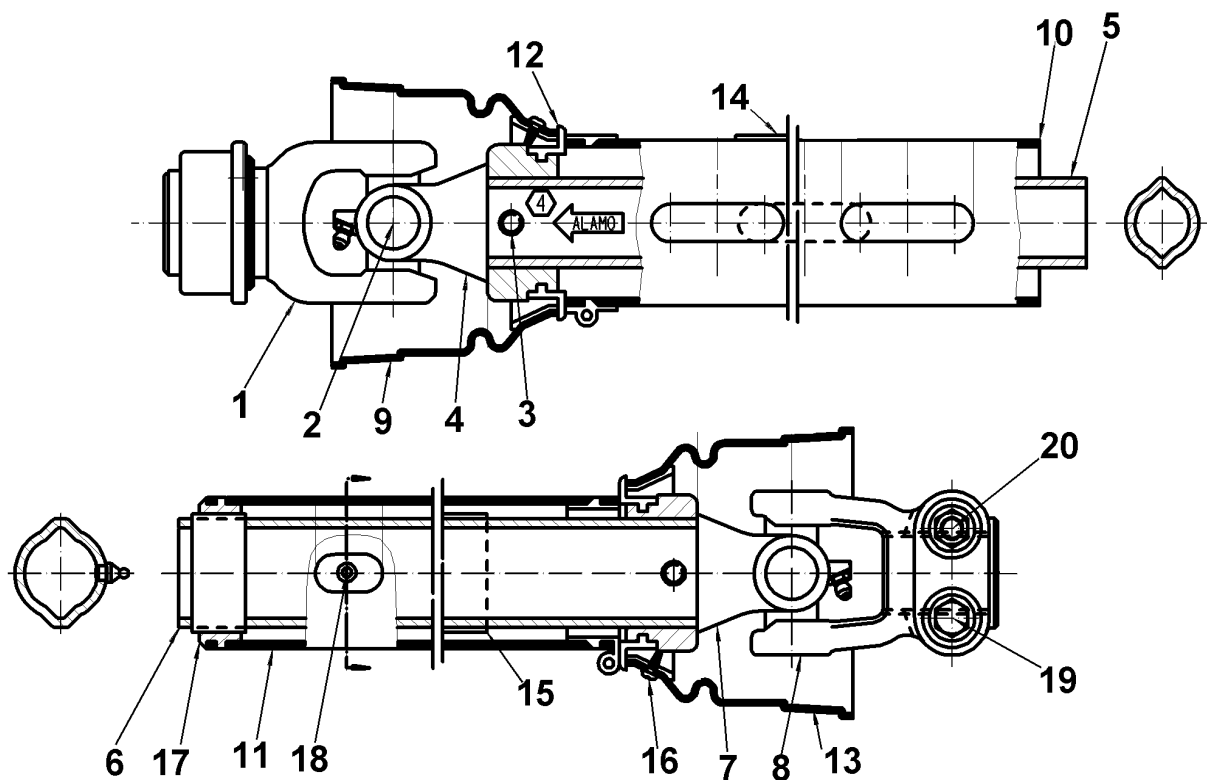
DRIVELINE ASSEMBLY - CV

Order replacement parts from this page if the profile of your driveline is star shaped.



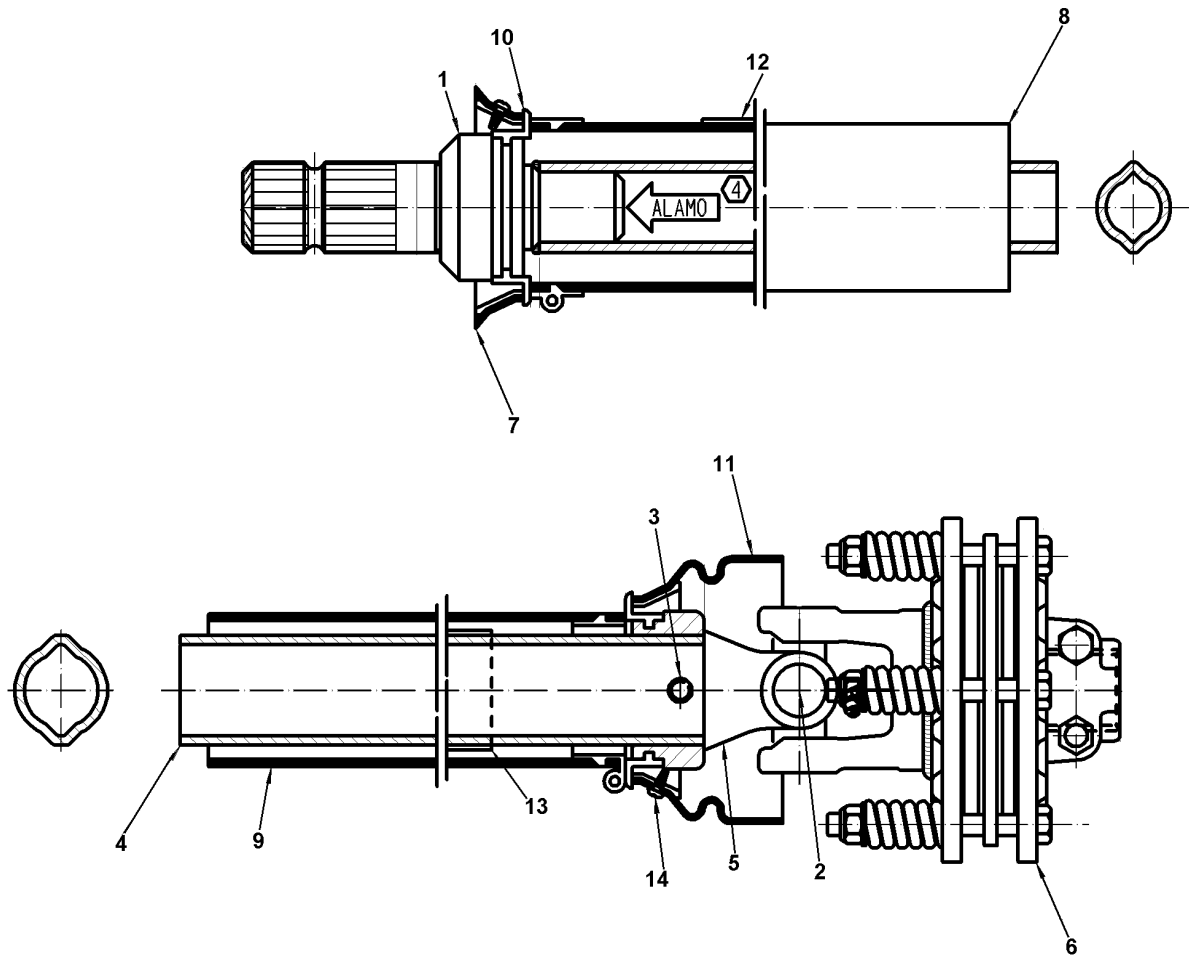
ITEM	PART NO.	QTY.	DESCRIPTION
	00775301	-	DRIVELINE ASSEMBLY (540 RPM)
	00775306	-	DRIVELINE ASSEMBLY (1000 RPM)
1	8380	1	YOKE (540 RPM)
	00775379	1	YOKE (1000 RPM)
2	8381	1	DOUBLE YOKE
3	8382	1	GREASE FITTING
4	00775309	1	INBOARD YOKE
5	8396	2	CROSS & BEARING KIT
6	0921000333	2	SPRING PIN
7	00775380	1	INNER PROFILE
8	00775381	1	PROFILE & SLEEVE
9	00775310	1	INBOARD YOKE
10	00775311	1	YOKE
11	8388	1	CROSS & BEARING KIT
12	8393	1	BEARING RING
13	00763951	1	CV CONE & BEARING
14	8949	1	SHIELD CONE
15	1416601	1	GREASE FITTING
16	4797	8	SCREW
17	8974	1	SUPPORT BEARING
	00775304	1	OUTER SHIELD HALF
	00775305	1	INNER SHIELD HALF
	00767953	1	Q.D. YOKE KIT
	00774208	1	C.C. YOKE LOCK ASSY

DRIVELINE ASSEMBLY PULL TYPE 1000 RPM



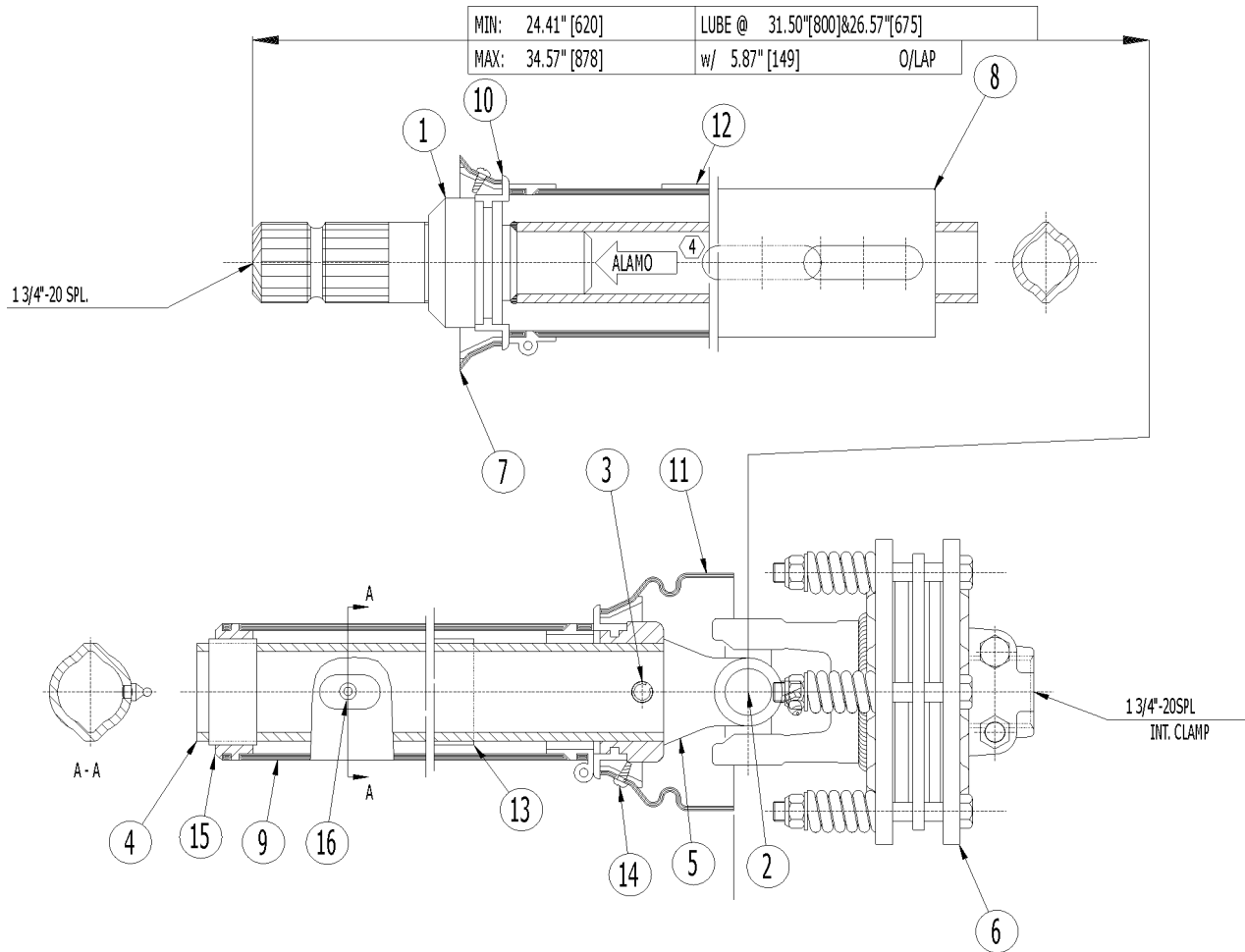
ITEM	PART NO.	QTY.	DESCRIPTION
1	00761762	1	YOKE 1-3/8-21 SPL PAINT BLACK
2	00189700	2	CROSSKIT
3	00756934	2	PIN,ROLL 10 X 80
4	00775317	1	YOKE INBOARD 1B
5	0921000332	1	TUBE, SHAFT
6	00775378	1	PROFILE & SLEEVE W.A.
7	00775318	1	YOKE INBOARD 2A
8	00775316	1	YOKE 1-3/4-20 SPL I.C.
9	-----	2	SHIELD CONE
10	-----	1	OUT. SHIELD TUBE OVL
11	-----	1	INN. SHIELD TUBE RND
12	8393	2	BEARING RING
14	00756005	1	DECAL-ROTATING DRIVELINE
15	00756004	1	DECAL-SHIELD MISSING
16	00759217	2	SCREW 1/2 LG END
17	8974	1	SUPPORT BEARING
18	00776879	1	PLATE,CLEVIS
19	00775384	2	BOLT P1.75 M12 X 60
20	00775327	2	NUT P1.75 M12

DRIVELINE ASSEMBLY - JACKSHAFT S/N 10200 -CURRENT PUB 11-05



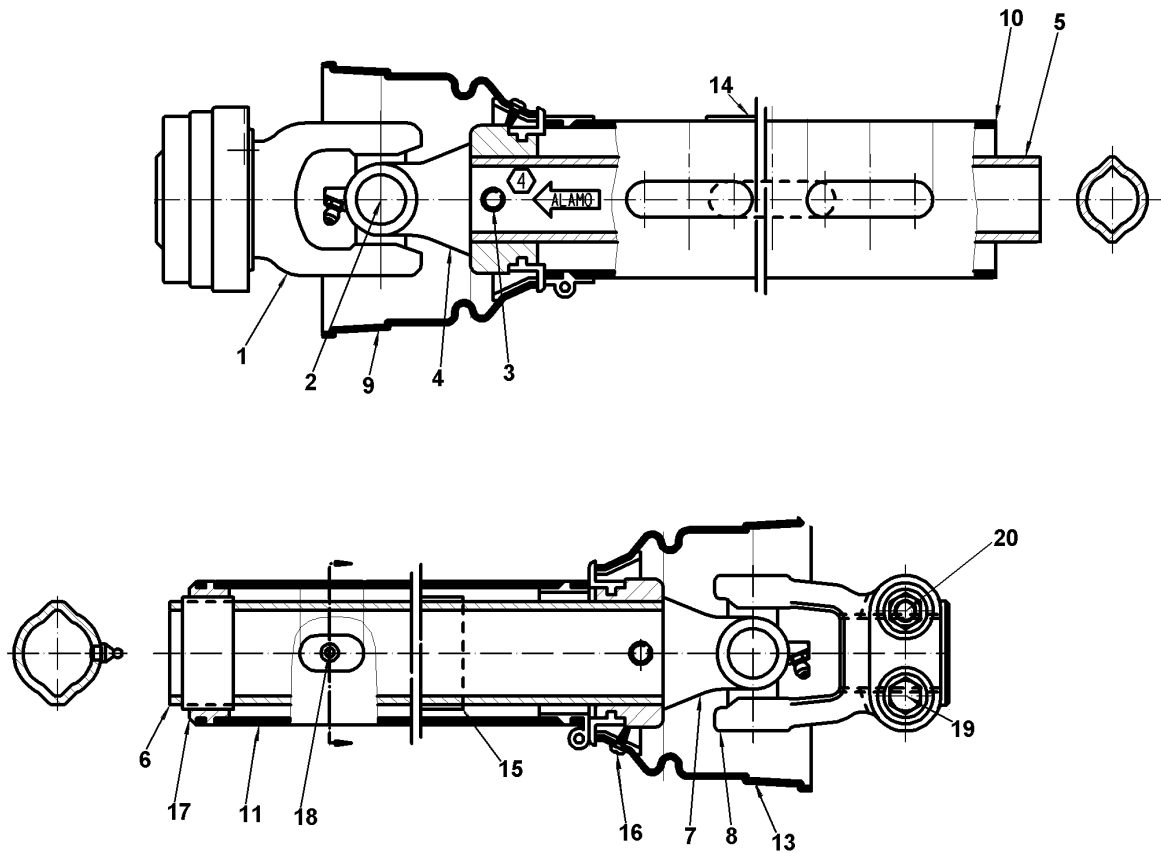
ITEM	PART NO.	QTY.	DESCRIPTION
	00778221	-	DRIVELINE ZW1340 JACKSHAFT
1	00778536	1	STUB AND PROFILE W.A.
2	00189700	1	CROSSKIT
3	00756934	1	PIN,ROLL 10 X 80
4	00778537	1	OUTER PROFILE
5	00775318	1	YOKE INBOARD 2A
6	00775331	1	CLUTCH FRICTION
7	-----	1*	GUARD RING
8	-----	1*	OUT. SHIELD TUBE OVL
9	-----	1*	INN. SHIELD TUBE RND
10	8393	2*	BEARING RING
11	-----	1*	SHIELD CONE -SHORT
12	00756005	1*	DECAL-ROTATING DRIVELINE
13	00756004	1	DECAL-SHIELD MISSING
14	00759217	2*	SCREW 1/2 LG END
*	00778535		COMPLETE SHIELD ASSEMBLY (ITEMS 7-12 & 14)

DRIVELINE ASSEMBLY - JACKSHAFT S/N 10001 - 10199 PUB 11-05



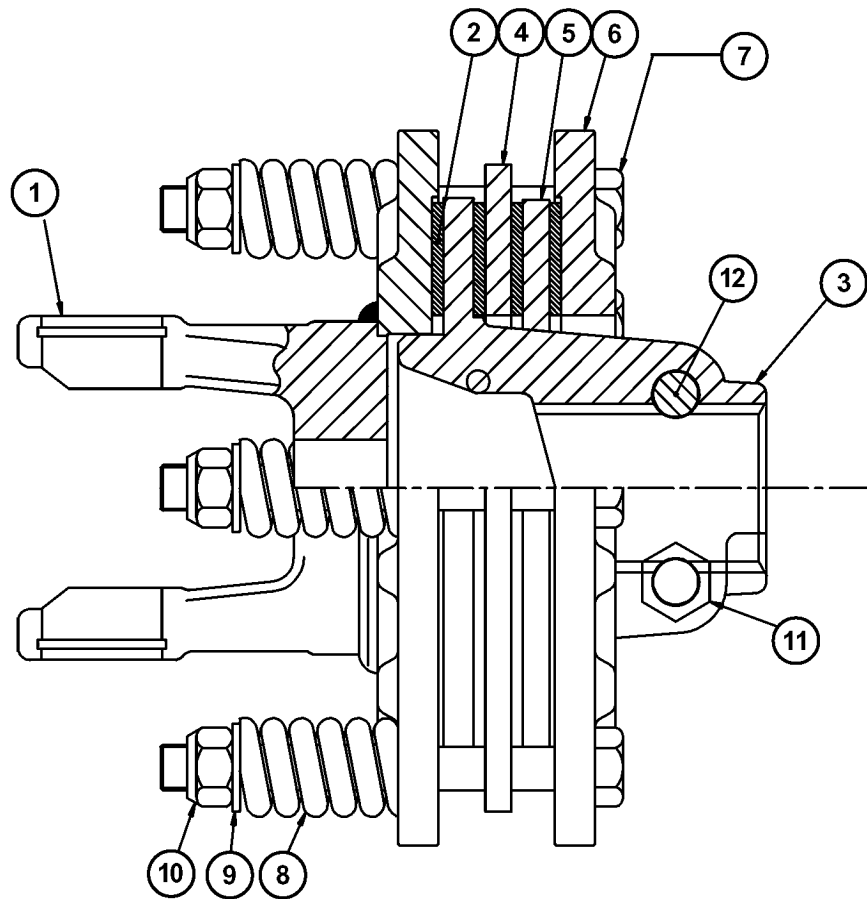
ITEM	PART NO.	QTY.	DESCRIPTION
	00776419	-	D/L 1-3/4-20 CAT4 1000 RPM
1	00776420	1	STUB AND PROFILE W.A.
2	00189700	1	CROSSKIT
3	00756934	1	PIN,ROLL 10 X 80
4	00776421	1	PROFILE AND SLEEVE W.A.
5	00775318	1	YOKE INBOARD 2A
6	00775331	1	CLUTCH FRICTION
7	-----	1	GUARD RING
8	-----	1	OUT. SHIELD TUBE OVL.
9	-----	1	INN. SHIELD TUBE RND
10	8393	2	BEARING RING
11	-----	1	SHIELD CONE- SHORT
14	00759217	2	SCREW 1/2 LG END
15	8974	1	SUPPORT BEARING
16	1416601	1	ZERK

DRIVELINE ASSEMBLY PULL TYPE 540 RPM



ITEM	PART NO.	QTY.	DESCRIPTION
1	00775353	1	YOKE 1-3/8-6 SPLINE ASGE
2	00189700	2	CROSSKIT
3	00756934	2	PIN,ROLL 10 X 80
4	00775317	1	YOKE INBOARD 1B
5	0921000332	1	TUBE, SHAFT
6	00775378	1	PROFILE & SLEEVE W.A.
7	00775318	1	YOKE INBOARD 2A
8	00775316	1	YOKE 1-3/4-20 SPL I.C.
9	-----	2	SHIELD CONE
10	-----	1	OUT. SHIELD TUBE OVL
11	-----	1	INN. SHIELD TUBE RND
12	8393	2	BEARING RING
14	00756005	1	DECAL-ROTATING DRIVELINE
15	00756004	1	DECAL-SHIELD MISSING
16	00759217	2	SCREW 1/2 LG END
17	8974	1	SUPPORT BEARING
18	00776879	1	PLATE,CLEVIS
19	00775384	2	BOLT P1.75 M12 X 60
20	00775327	2	NUT P1.75 M12

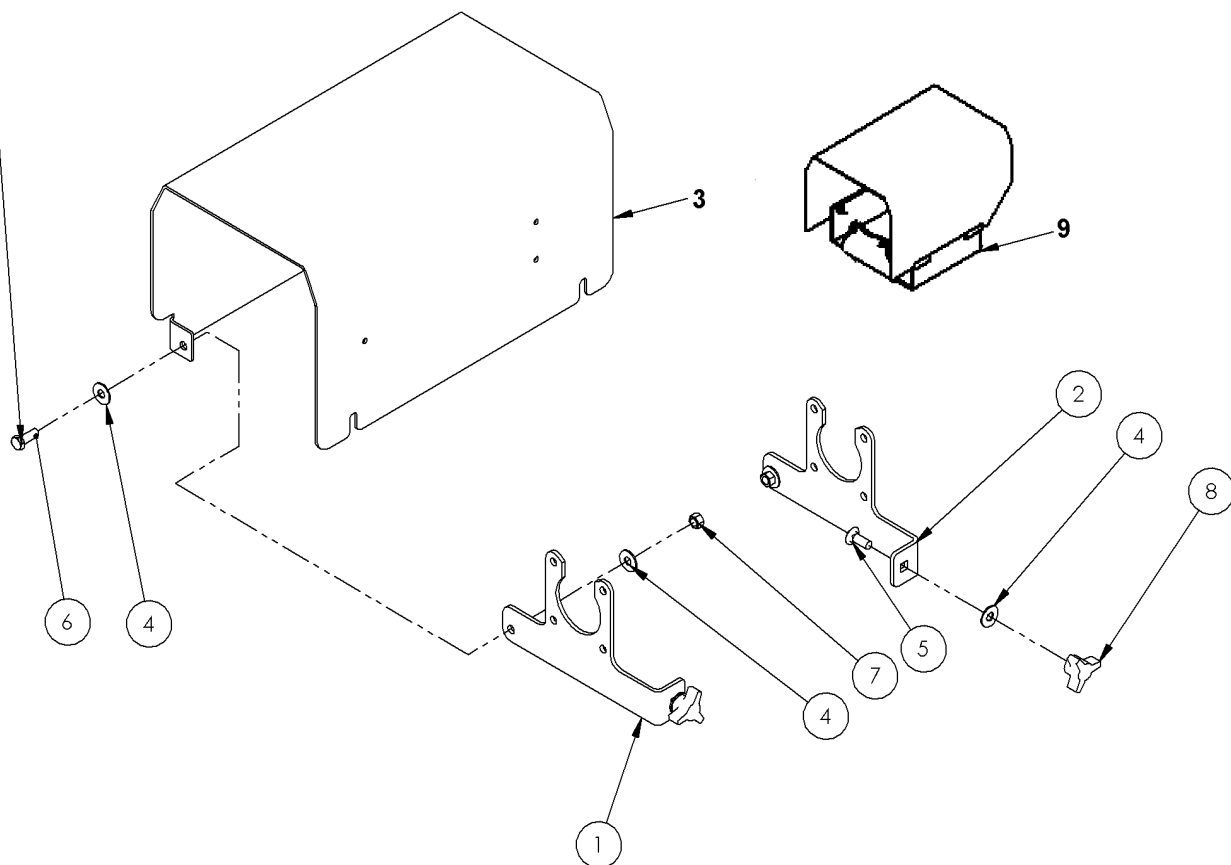
SLIP CLUTCH ASSEMBLY Rev 09-05



ITEM	PART NO.	QTY.	DESCRIPTION
	00775331	-	SLIP CLUTCH
1	00775333	1	FLANGE YOKE
2	00754202	4	FRICTION DISK
3	00775334	1	HUB
4	00775335	1	DRIVE PLATE
5	00775336	1	DRIVE PLATE
6	00775337	1	THRUST PLATE
7	00775338	6	BOLT
8	00775339	6	COMPRESSION SPRING
9	00754566	6	LOCKWASHER
10	00755881	6	LOCKNUT
11	700322C	2	LOCKNUT 14 MM
12	0615700	2	BOLT 14M

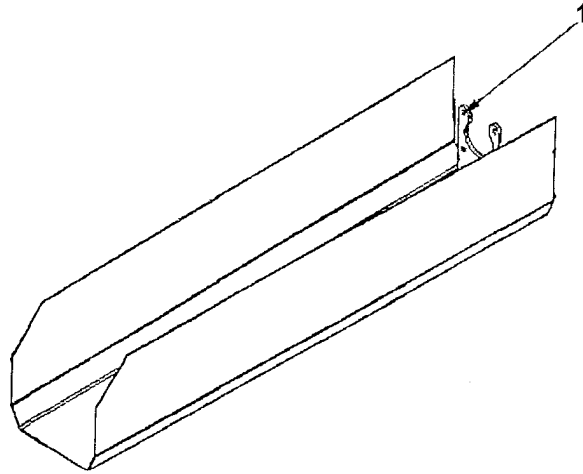
SHIELD ASSEMBLY

NOTE: CARE MUST BE TAKEN NOT TO OVER TIGHTEN.
THE SHIELD MUST HINDGE FREELY.



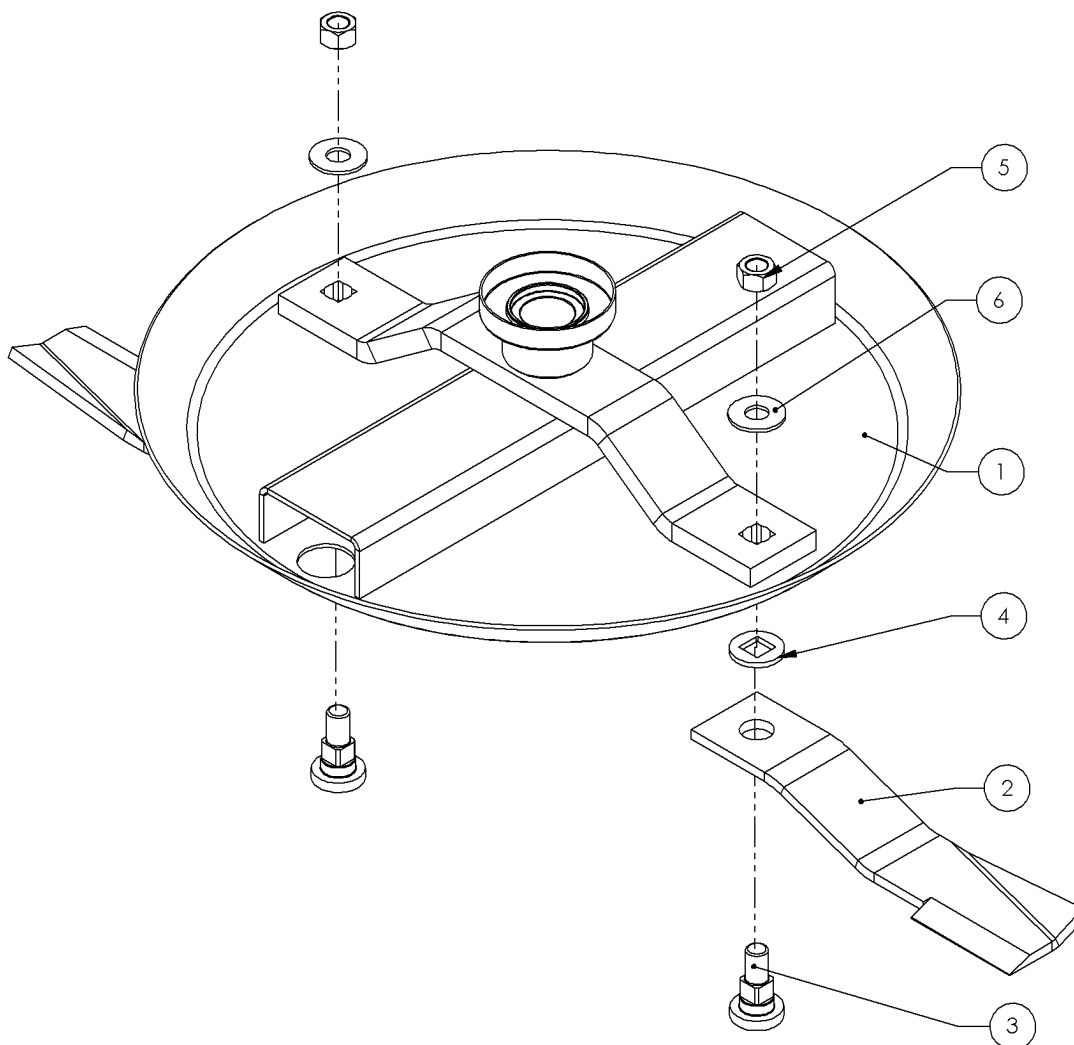
ITEM	PART NO.	QTY.	DESCRIPTION
	00778670	-	SHIELD ASSEMBLY
1	00778664	1	BRACKET, SHIELD MOUNT
2	00778665	1	BRACKET, SHIELD MOUNT
3	00778666	1	SHIELD (COUPLER)
4	00011100	6	FLATWASHER 3/8 PL STD
5	000644	2	CARB. 3/8 NC X 1-1/4" PL
6	00011400	2	BOLT 3/8 NC X 1" PL5
7	00015800	2	NUT, TOPLOCK 3/8 NC PLB
8	00769933	2	THUMB NUT
9	00778649	1	DIVIDER SHIELD

DIVIDER SHIELD ASSEMBLY Rev 10-04



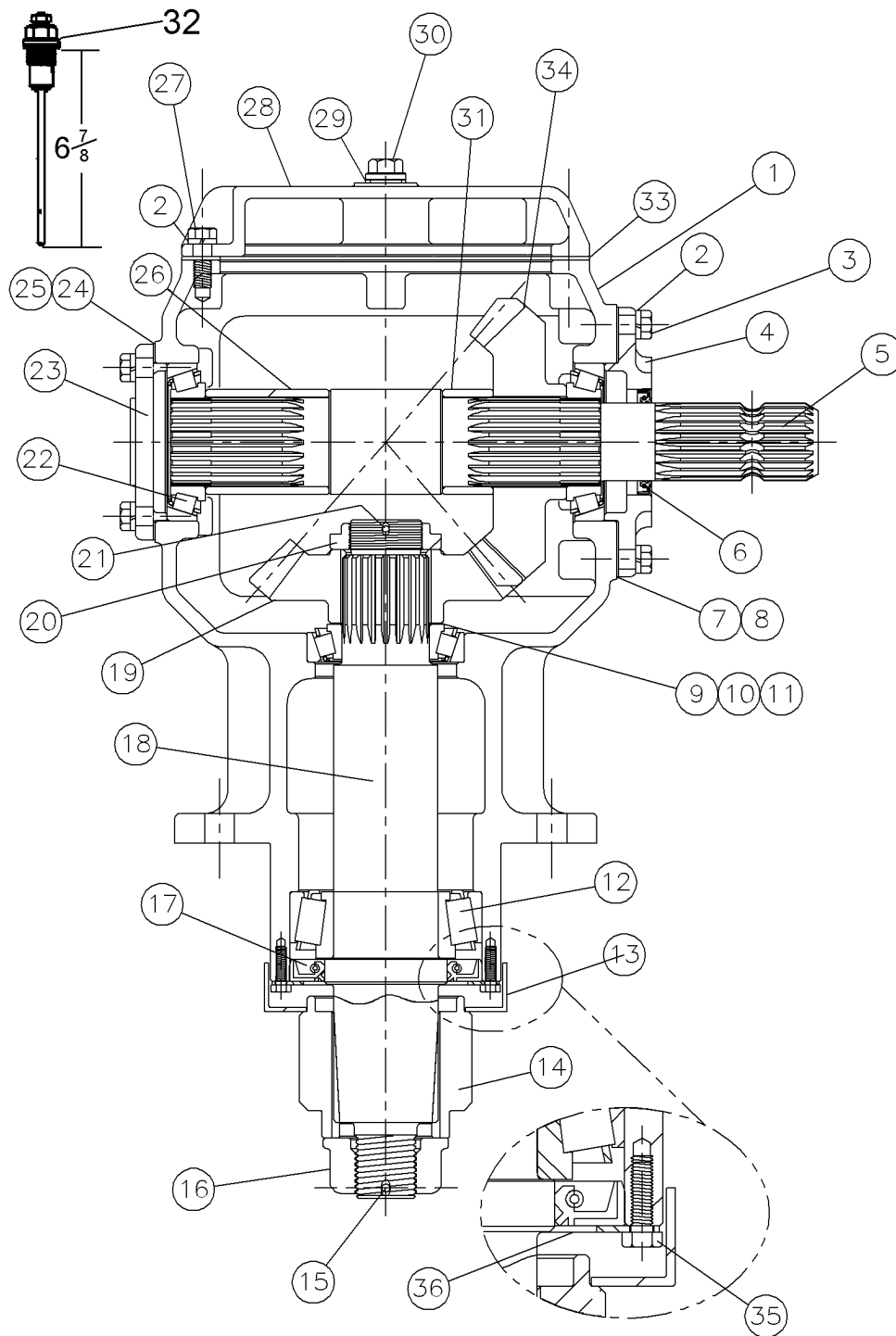
ITEM	PART NO.	QTY.	DESCRIPTION
1	00778149	-	SHIELD WELDMENT, DIVIDER

DISHPAN ASSEMBLY Rev 10-04



ITEM	PART NO.	QTY.	DESCRIPTION
	00778067	-	DISHPAN ASSEMBLY, CW (SHOWN)
1	00778066	1	DISHPAN WELDMENT
2	8590	1	BLADE (CW ROTATION)
	8589	1	BLADE (CCW ROTATION)
3	8251	2	BLADE BOLT SPECIAL
4	00778047	2	WASHER-SQUARE ID
5	5JRC16140	2	LOCKNUT 1 -14 TLDT GC ZP
6	9216	2	WASHER, 1 STRUCTURAL

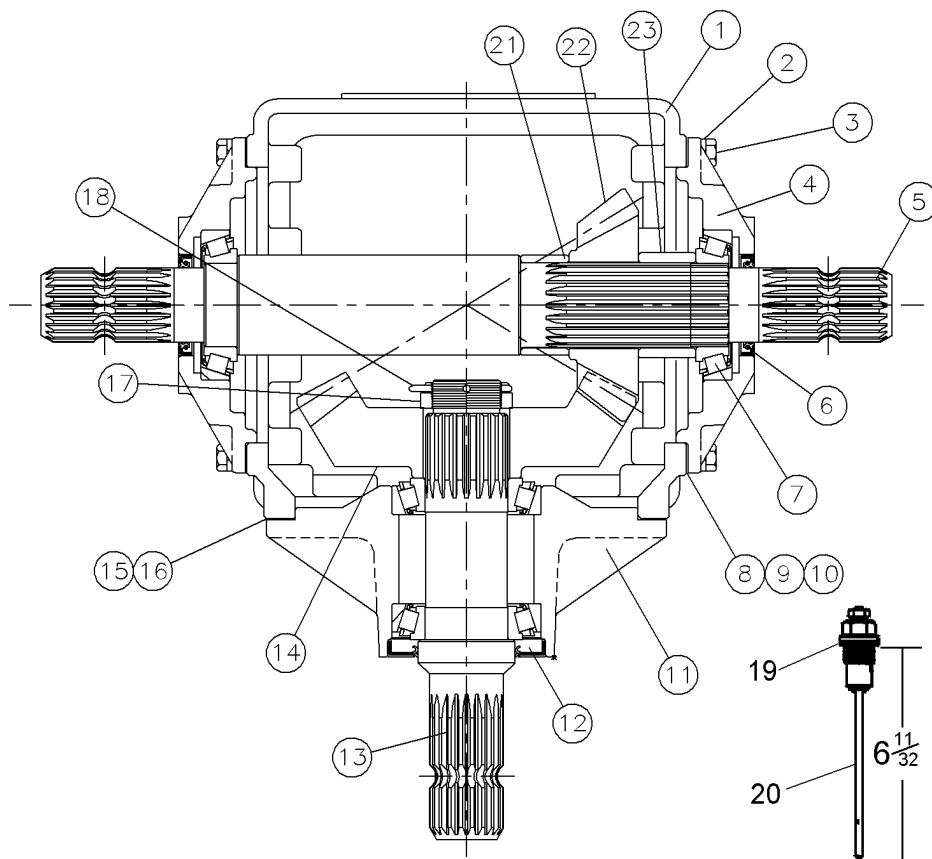
GEARBOX ASSEMBLY



GEARBOX ASSEMBLY

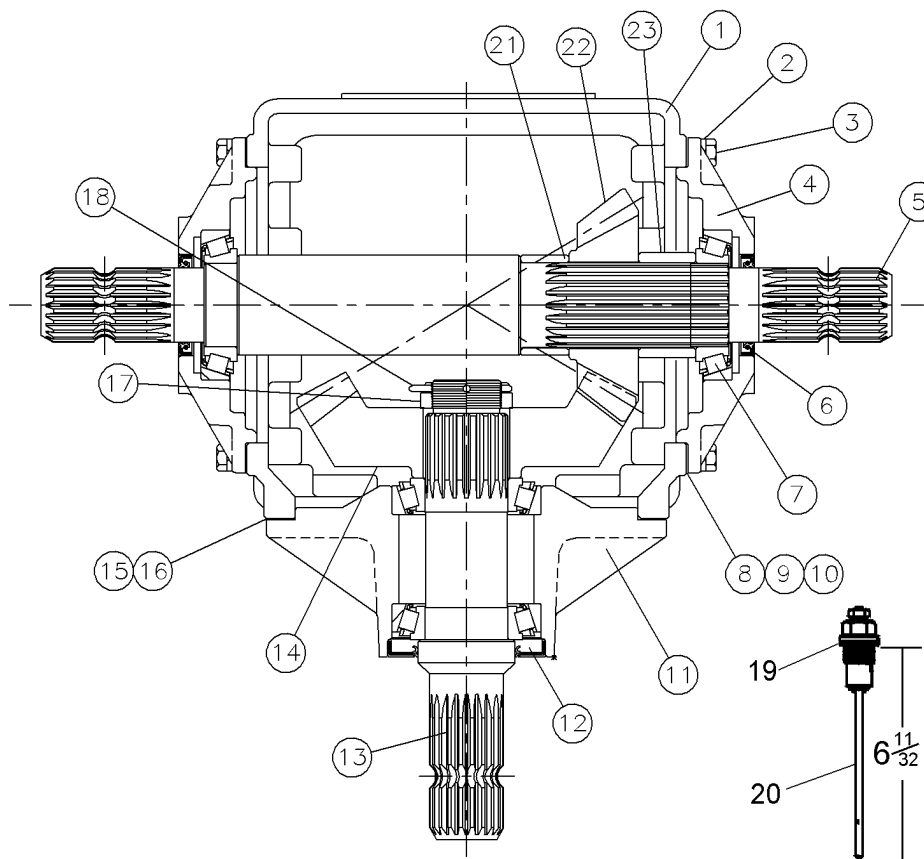
ITEM	PART NO.	QTY.	DESCRIPTION
	00777840	-	GEARBOX ASSEMBLY
1	00777882	1	HOUSING
2	00755954	18	LOCKWASHER
3	00762398	12	HEX HEAD BOLT M10X 1.5 X 30
4	00777881	1	INPUT CAP
5	00777880	1	INPUT SHAFT
6	00758653	1	INPUT OIL SEAL
7	00777879	VAR	INPUT CAP GASKET 0.10
8	00777879	VAR	INPUT CAP GASKET 0.25
9	00758667	VAR	SHIM 0.30
10	00762153	VAR	SHIM 0.40
11	00758668	VAR	SHIM 0.50
12	00778226	1	BEARING ASSEMBLY
13	00777876	1	SEAL PROTECTOR
14	00771227	1	BLADE HUB
15	01422502	1	COTTER PIN
16	00777874	1	HEX SLOTTED FLANGED NUT M36
17	00777873	1	OUTPUT OILSEAL
18	00777872	1	OUTPUT SAFT
19	00777884	1	TOOTH PINION
20	00762121	1	BEARING ADJUSTING NUT
21	00770421	1	COTTER PIN 3.6MM X 65MM
22	00769938	3	BEARING ASSEMBLY
23	00777870	1	BLANK ADJUSTING CAP
24	00777869	VAR	BLANK CAP GASKET 0.10
25	00777868	VAR	BLANK CAP GASKET 0.25
26	00777867	1	BEARING SPACER
27	61368C8	6	HEX HEAD BOLT M10 X 1.5 X 30
28	00777866	1	INSPECTION COVER CAP
29	00769321	2	SEALING WASHER
30	00762123	2	HEX HEAD PLUG M18X1.5
31	00758657	1	INPUT SHAFT SPACER
32	00777883	1	DIP STICK BREATHER ASSEMBLY
33	00777865	1	INSPECTION COVER GASKET
34	00777885	1	TOOTH GEAR
35	02969728	2	HEX HEAD BOLT M6 X 1 X 20
36	00778621	1	OUTPUT SEAL PLATE
	00765444	6 1/ 2qts	QT,ALAMO 000 GEAR LUBE

DIVIDER GEARBOX 540 RPM Rev 01-05



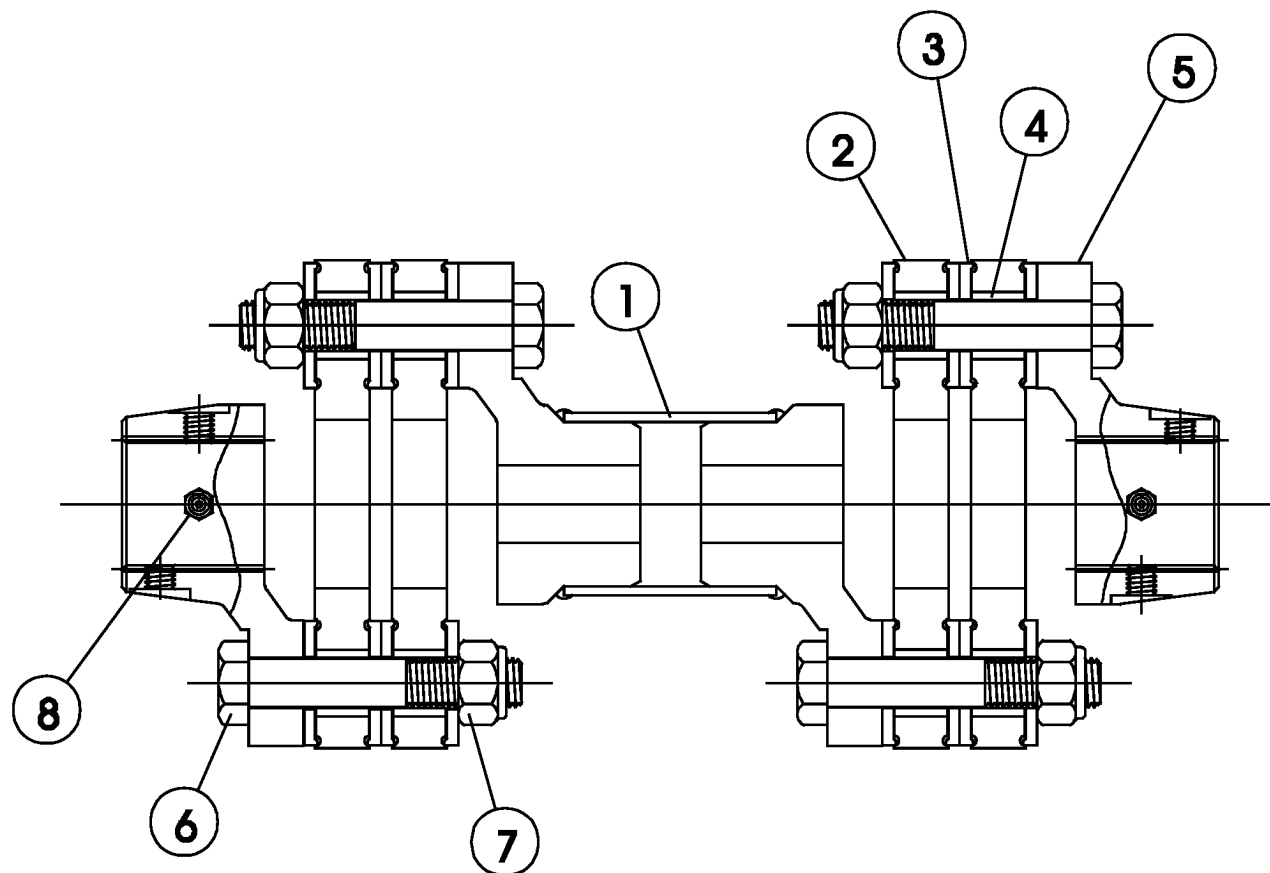
ITEM	PART NO.	QTY.	DESCRIPTION
	00778021	-	DIVIDER GEARBOX 540 RPM
1	00778022	1	HOUSING
2	00755954	24	LOCKWASHER
3	00758659	24	BOLT M10 X 1.5 X 30
4	00770734	2	INPUT CAP
5	00778023	1	SHAFT
6	00758653	2	INPUT OIL SEAL
7	00769938	4	BEARING ASSEMBLY
8	00758646	VAR	INPUT CAP GASKET 0.15
9	00758647	VAR	INPUT CAP GASKET 0.25
10	00758648	VAR	INPUT CAP GASKET 0.45
11	00778027	1	DIVIDER HUB CAP
12	00762521	1	OIL SEAL
13	00778028	1	DIVIDER INPUT SHAFT
14	00778029	1	AG SUPER 200 DIVIDER 25 T GEAR
15	00778030	VAR	DIVIDER GASKET 0.10
16	00778031	VAR	DIVIDER GASKET 0.25
17	00762121	1	BEARING ADJUSTING NUT
18	00770421	1	COTTER PIN
19	00769321	1	COPPER SEALING WASHER
20	00778534	1	DIP STICK BREATHER ASSEMBLY
21	00758657	1	BEARING SPACER
22	00778032	1	DIVIDER 15 TOOTH GEAR
23	00778033	1	DIVIDER BEARING SPACER
24	00770737	1	HEX HEAD LEVEL PLUG
	00765444	5qts	QT,ALAMO 000 GEAR LUBE

DIVIDER GEARBOX 1000 RPM Rev 01-05



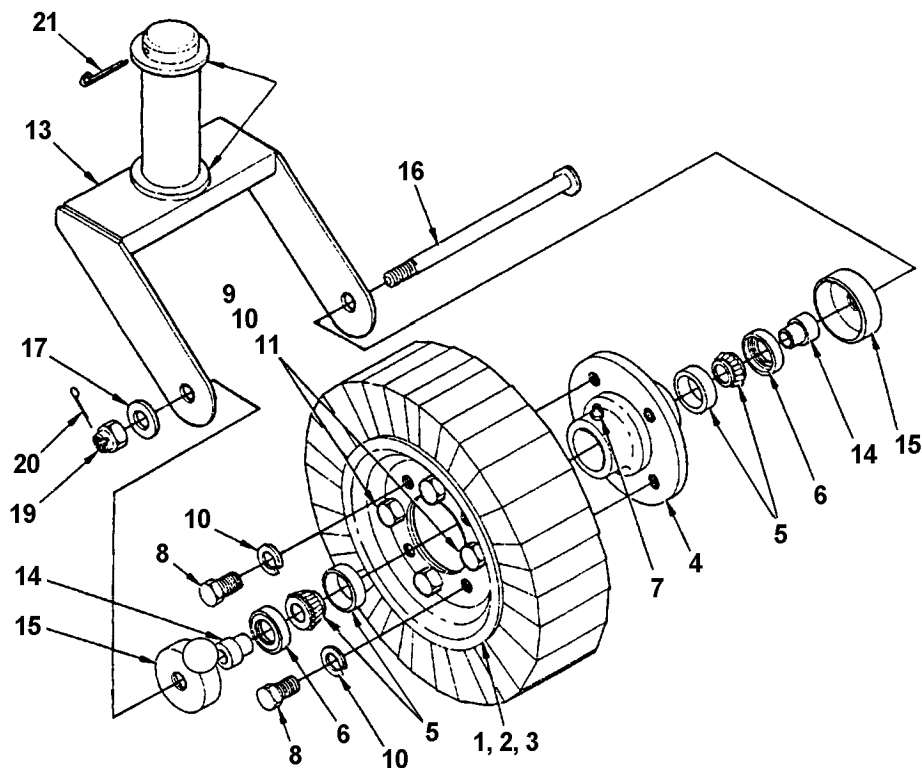
ITEM	PART NO.	QTY.	DESCRIPTION
	00778034	-	DIVIDER GEARBOX 1000 RPM
1	00778022	1	HOUSING
2	00755954	24	LOCKWASHER
3	00758659	24	BOLT M10 X 1.5 X 30
4	00770734	2	INPUT CAP
5	00778023	1	SHAFT
6	00758653	2	INPUT OIL SEAL
7	00769938	4	BEARING ASSEMBLY
8	00758646	VAR	INPUT CAP GASKET 0.15
9	00758647	VAR	INPUT CAP GASKET 0.25
10	00758648	VAR	INPUT CAP GASKET 0.45
11	00778027	1	DIVIDER HUB CAP
12	00762521	1	OIL SEAL
13	00778028	1	DIVIDER INPUT SHAFT
14	00777884	1	20 TOOTH PINION
15	00778030	VAR	DIVIDER GASKET 0.10
16	00778031	VAR	DIVIDER GASKET 0.25
17	00762121	1	BEARING ADJUSTING NUT
18	00770421	1	COTTER PIN
19	00769321	1	COPPER SEALING WASHER
20	00778534	1	DIP STICK BREATHER ASSEMBLY
21	00758657	1	BEARING SPACER
22	00777885	1	DIVIDER 23 TOOTH GEAR
23	00778033	1	DIVIDER BEARING SPACER
24	00770737	1	HEX HEAD LEVEL PLUG
	00765444	5qts	QT,ALAMO 000 GEAR LUBE

DRIVELINE OUTER



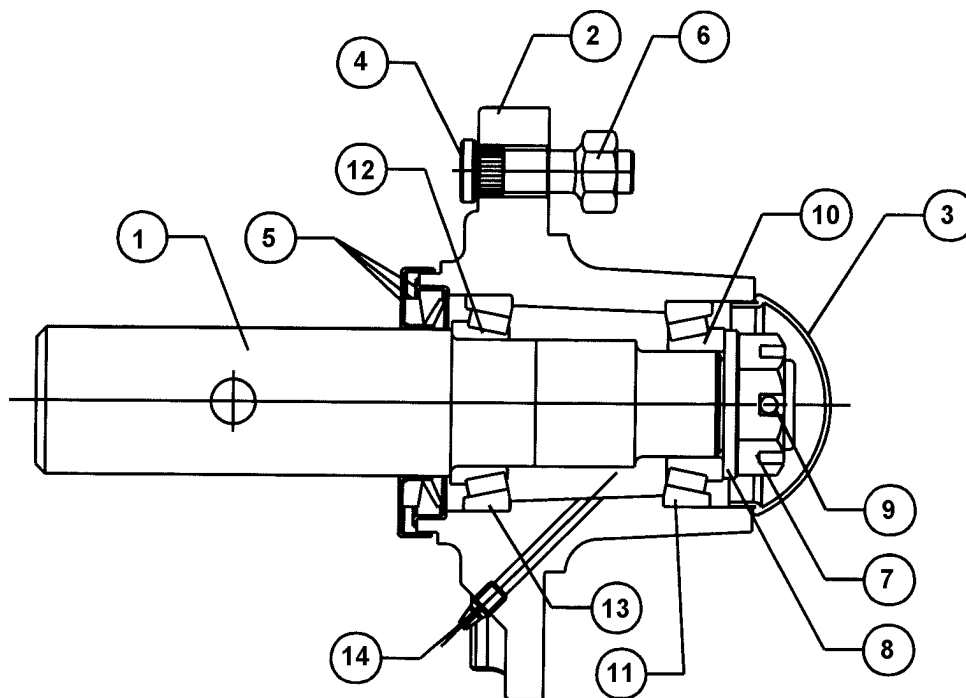
ITEM	PART NO.	QTY.	DESCRIPTION
	00777983	-	DRIVELINE ASSY
1	00778169	1	DOUBLE FLEX YOKE & TUBE ASSEMBLY
2	00762215	4	FLEX COUPLER RUBBER DISK
3	00766475A	48	FLEX COUPLER SHAPED WASHER
4	00771287	24	FLEX COUPLER BUSHING
5	00762216A	2	FLEX CONNECTOR YOKE 1 3/4"-20
6	00765902	12	HEX HEAD CAP SCREW
7	00765962	12	SELF LOCKING HEX NUT
8	00764386	2	GREASE ZERK

CASTER WHEEL & FORK ASSEMBLY



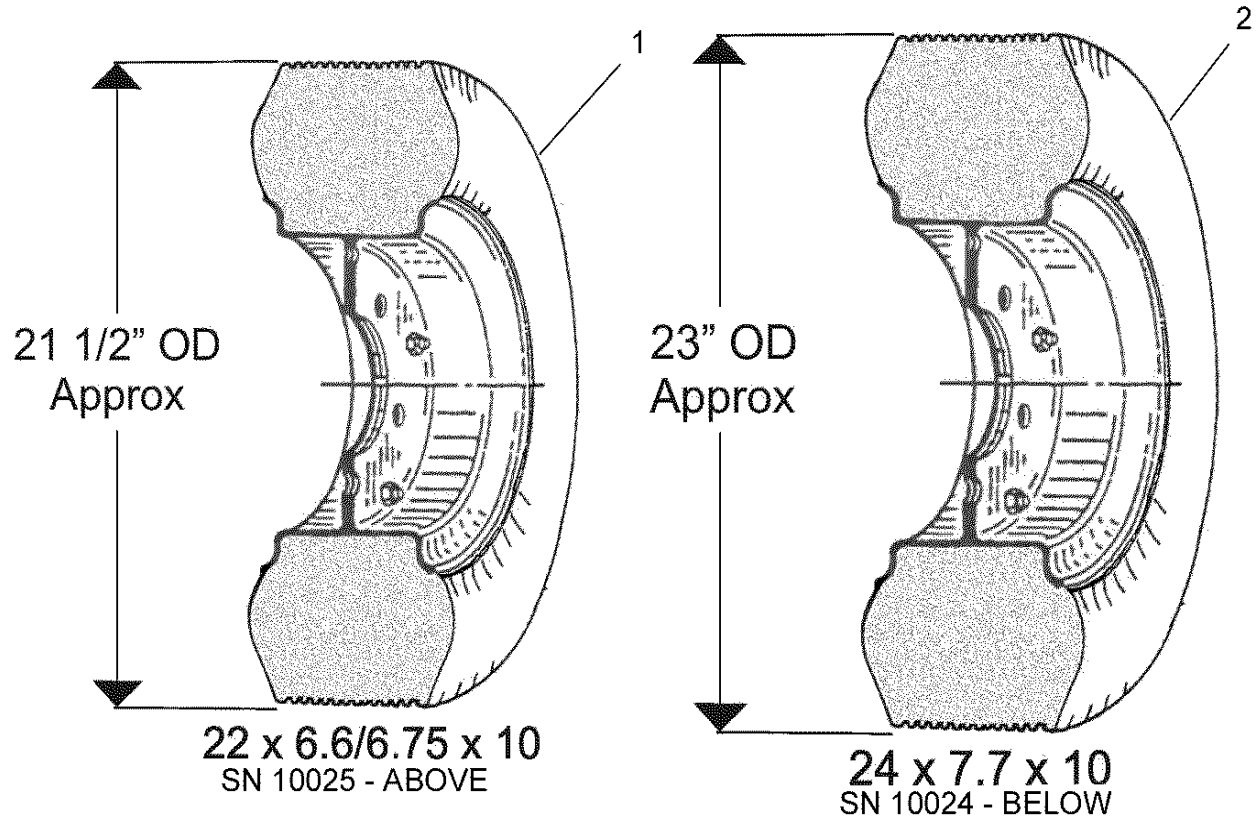
ITEM	PART NO.	QTY.	DESCRIPTION
	00776220	-	CASTER FORK & WHEEL ASSEMBLY
1	373024H	1	TIRE & WHEEL
2	373024A	1	TIRE
3	373024B	1	5" CASTER FORK WELDMENT
4	00776214	1	HUB
5	00776213	2	BEARING CONE & CUP
6	00776219	2	OIL SEAL
7	00772082	1	GREASE FITTING (THREADED)
8	00776216	4	BOLT
9	7A6166	4	BOLT
10	00776215	4	FLATWASHER
11	00012101	4	LOCKWASHER
12	00013901	4	NUT
13	0585020210A	1	CASTER FORK WELDMENT
14	00772017	2	BUSHING
15	00772018	2	DUST CAP
16	00776211	1	SPINDLE BOLT
17	02822500	1	WASHER
18	15B2400	2	FLATWASHER
19	00776212	1	CASTELLATED NUT
20	00771620	1	COTTER PIN
21	00758899	1	COTTER PIN

WHEEL HUB ASSEMBLY



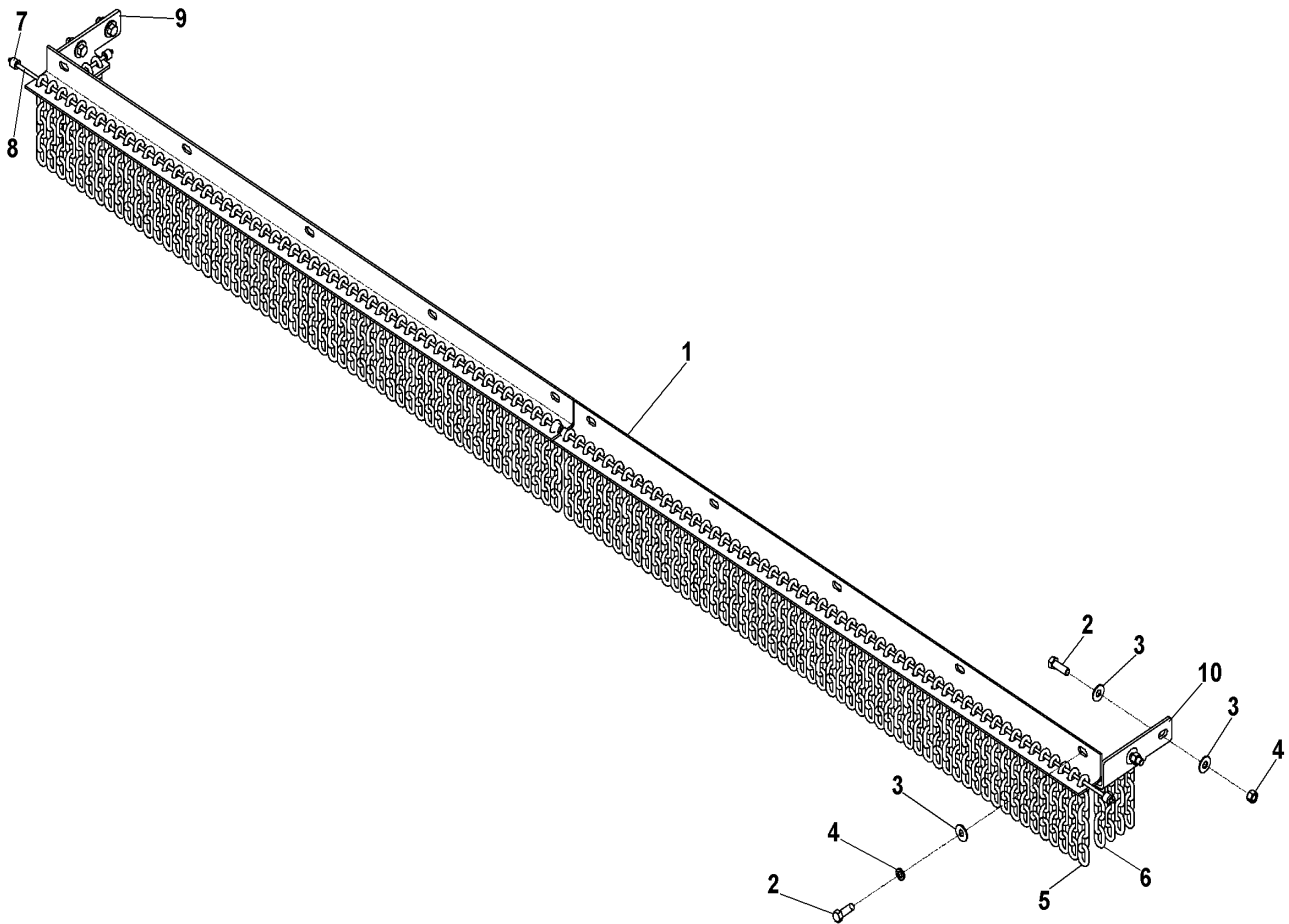
ITEM	PART NO.	QTY.	DESCRIPTION
	00775616A	-	COMPLETE HUB & SPINDLE ASSY.
1	00774821	1	SPINDLE
2	00756000	1	WHEEL HUB CASTING
3	00756492	1	DUST CAP
4	00756488	5	STUD BOLT 1/2" -20 UNF
5	00778108	1	SEAL KIT
6	00756014	5	WHEEL NUT 1/2"-20 UNF
7	00756490	1	BEARING ADJUSTING NUT 1"-14UNS
8	00756793	1	WASHER 1"
9	00026200	1	COTER PIN 1/8" X 2-3/8" LNG
10	00750434	1	BEARING CONE INSIDE
11	00756576	1	BEARING CUP OUTSIDE
12	0371242102	1	BEARING CONE INSIDE
13	00756577	1	BEARING CUP OUTSIDE
14	00003500	1	GREASE FITTING

FOAM FILLED USED AIRCRAFT TIRE



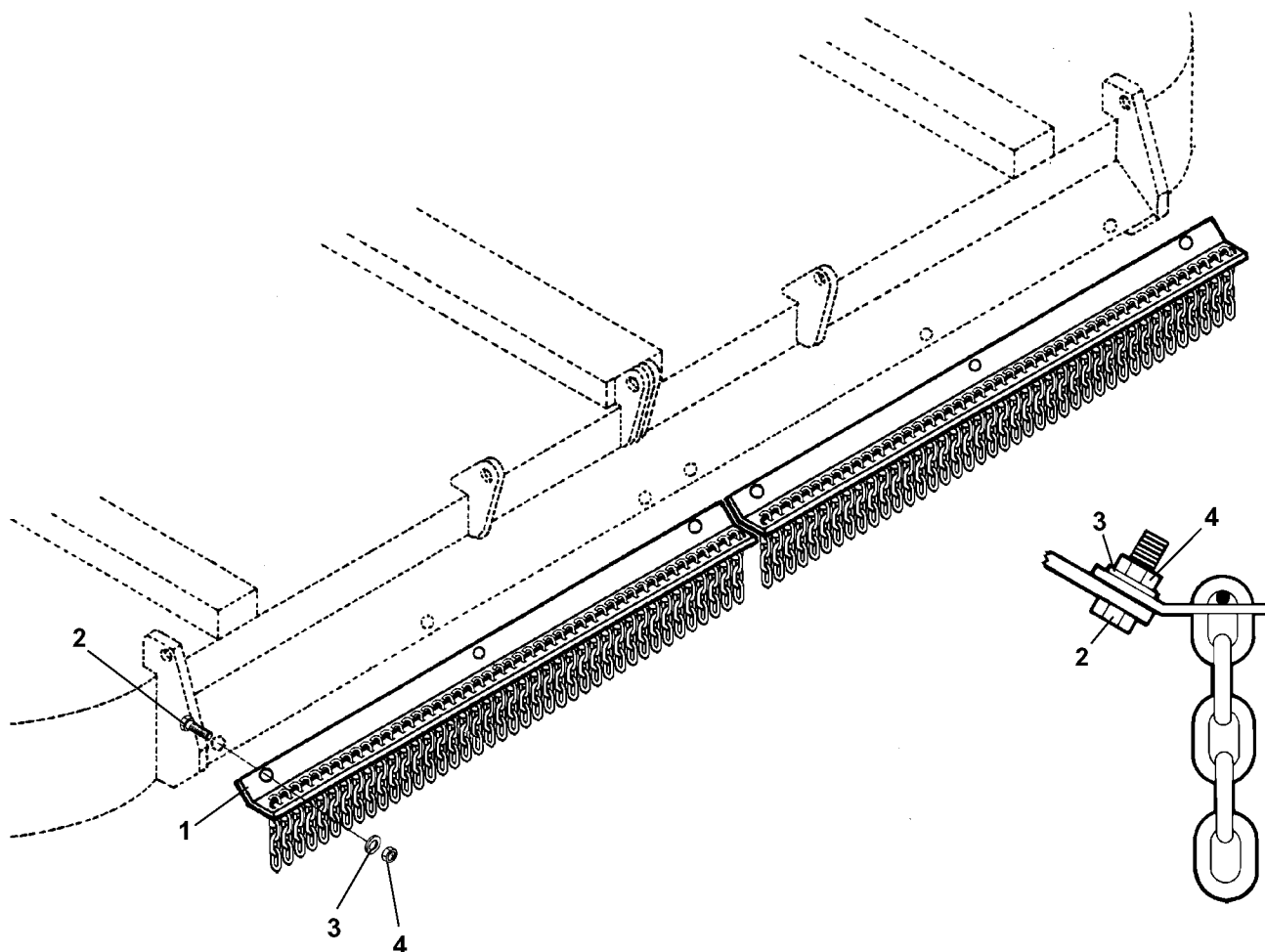
ITEM	PART NO.	QTY.	DESCRIPTION
1	00766911	-	ASY,AIRCRAFT TIRE & WHEEL (CURRENT PRODUCTION)
2	00766911A	-	ASY, AIRCRAFT TIRE & WHEEL (OBSOLETE, NOT CURRENT PRODUCTION)

CHAINGUARD ASSEMBLY-FRONT



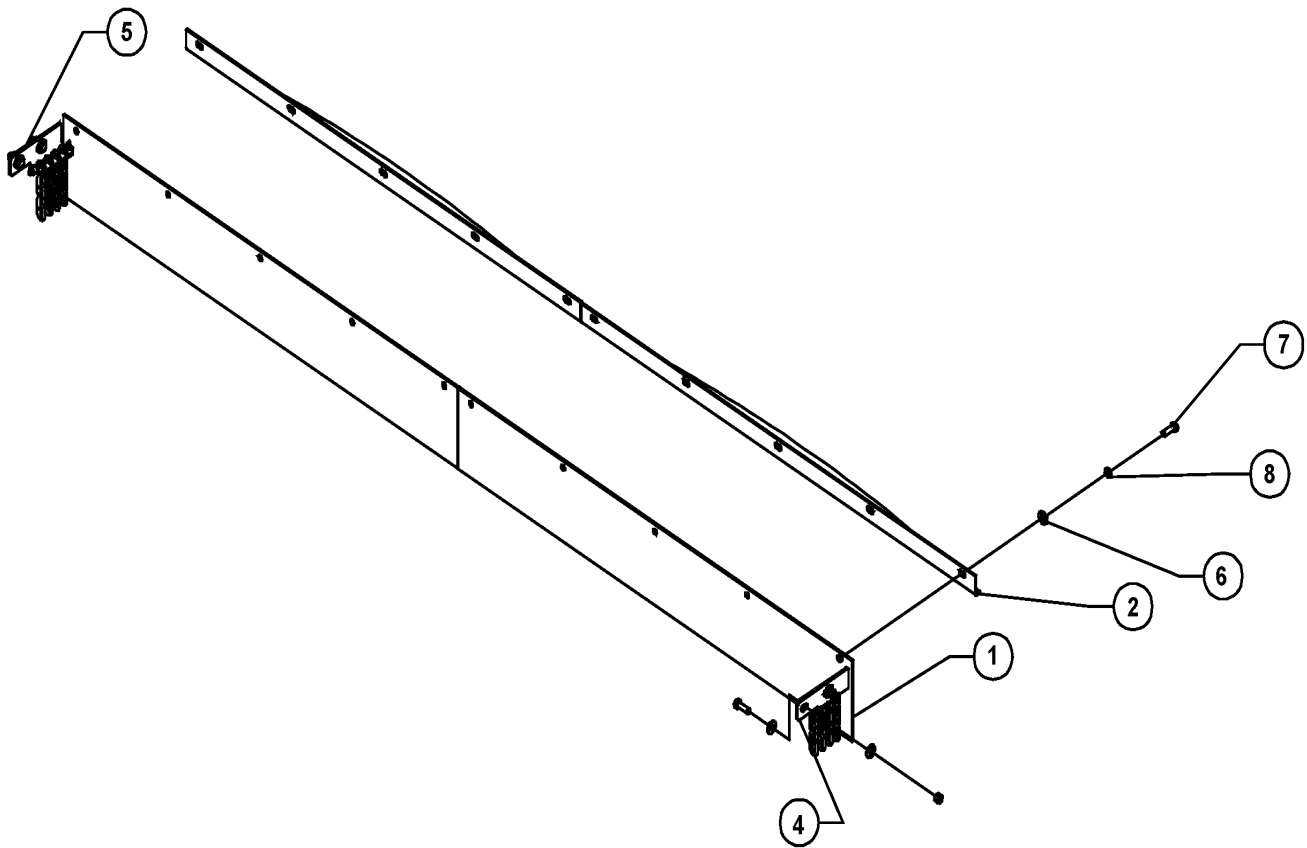
ITEM	PART NO.	QTY.	DESCRIPTION
1	00778093	2	CHAINGUARD BRACKET FRONT
2	00748823	14	BOLT
3	00002700	18	FLATWASHER
4	00001300	10	LOCKWASHER
5	00777370	108	6 LINK CHAIN
6	00777369	8	5 LINK CHAIN
7	00777374	8	ALUMINUM CABLE STOP
8	00992000	1	CABLE
9	00778484	1	CHAINGUARD BRACKET FRONT LEFT
10	00778483	1	CHAINGUARD BRACKET FRONT RIGHT

CHAIN GUARD ASSEMBLY-REAR



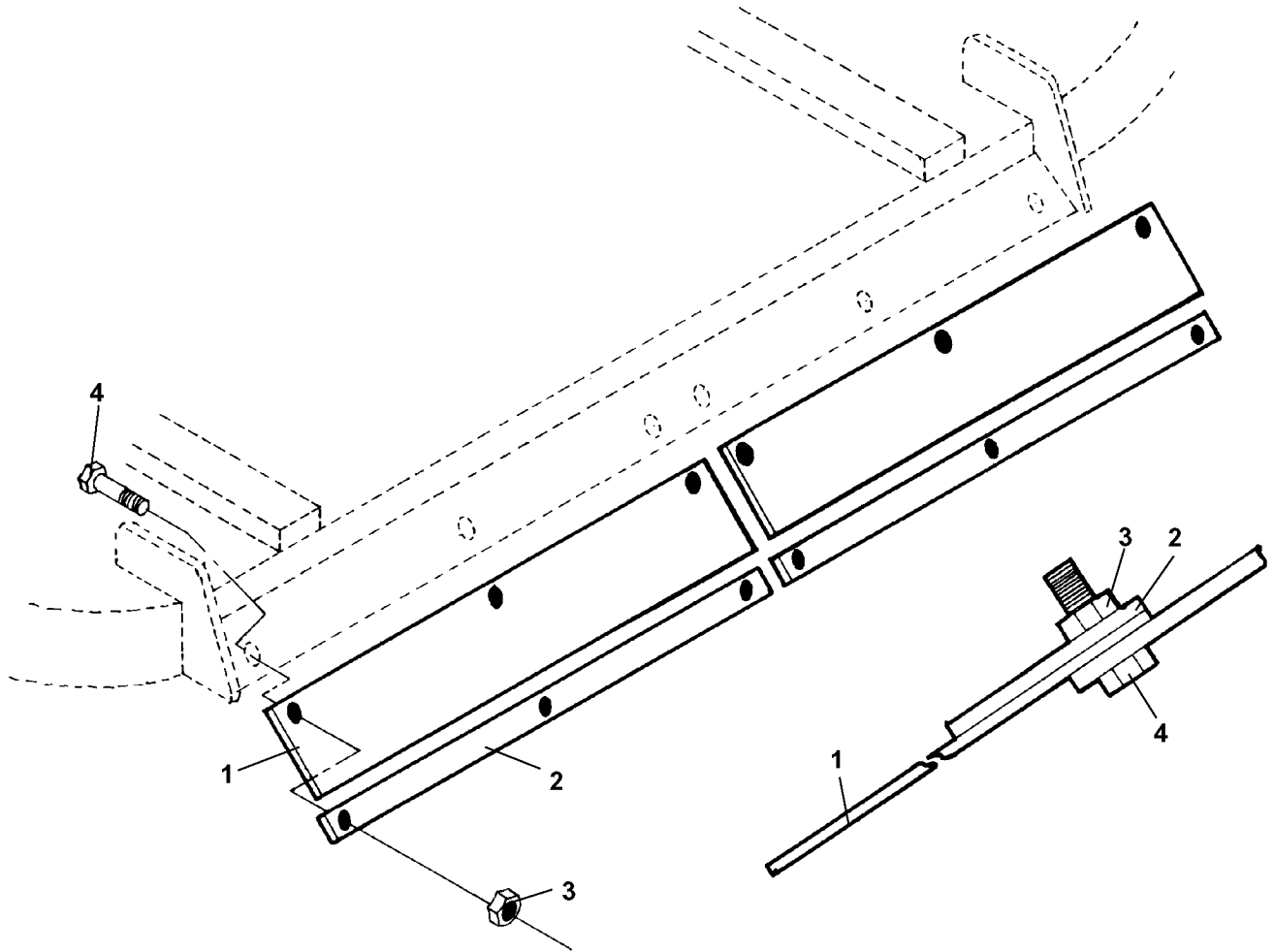
ITEM	PART NO.	QTY.	DESCRIPTION
1	00762182	2	CHAINGUARD ASSEMBLY-REAR
2	02030700	6	BOLT
3	00002700	6	WASHER
4	4526	6	NUT

DEFLECTOR ASSEMBLY- FRONT



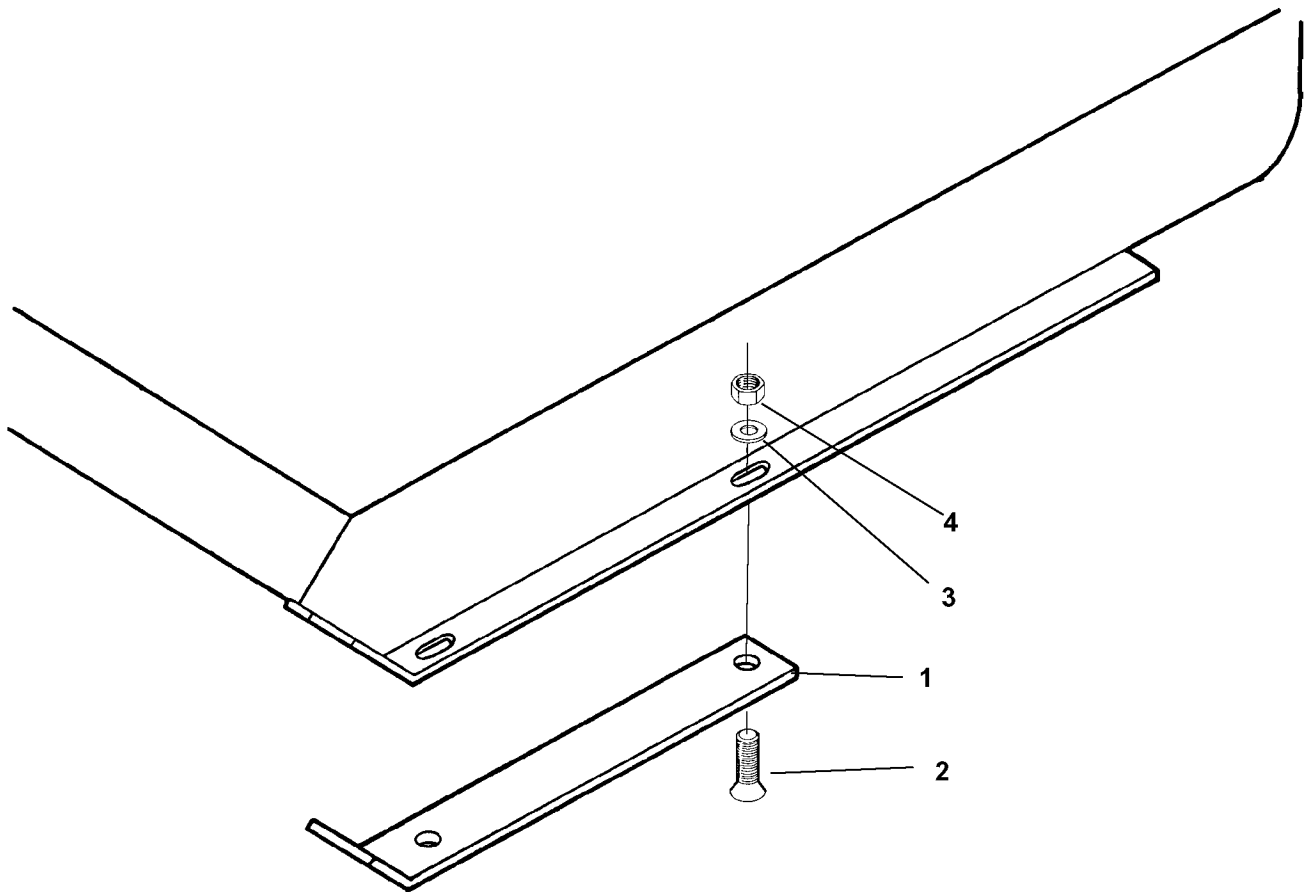
ITEM	PART NO.	QTY.	DESCRIPTION
1	00778092	2	FRONT DEFLECTOR
2	00778091	2	FRONT BRACKET DEFLECTOR
4	00778485	1	SIDE CHAINGUARD ASSY. RIGHT
5	00778486	1	SIDE CHAINGUARD ASSY. LEFT
6	00002700	1	FLATWASHER
7	00748823	1	BOLT
8	00001300	1	LOCKWASHER

DEFLECTOR ASSEMBLY-REAR Rev 01-05



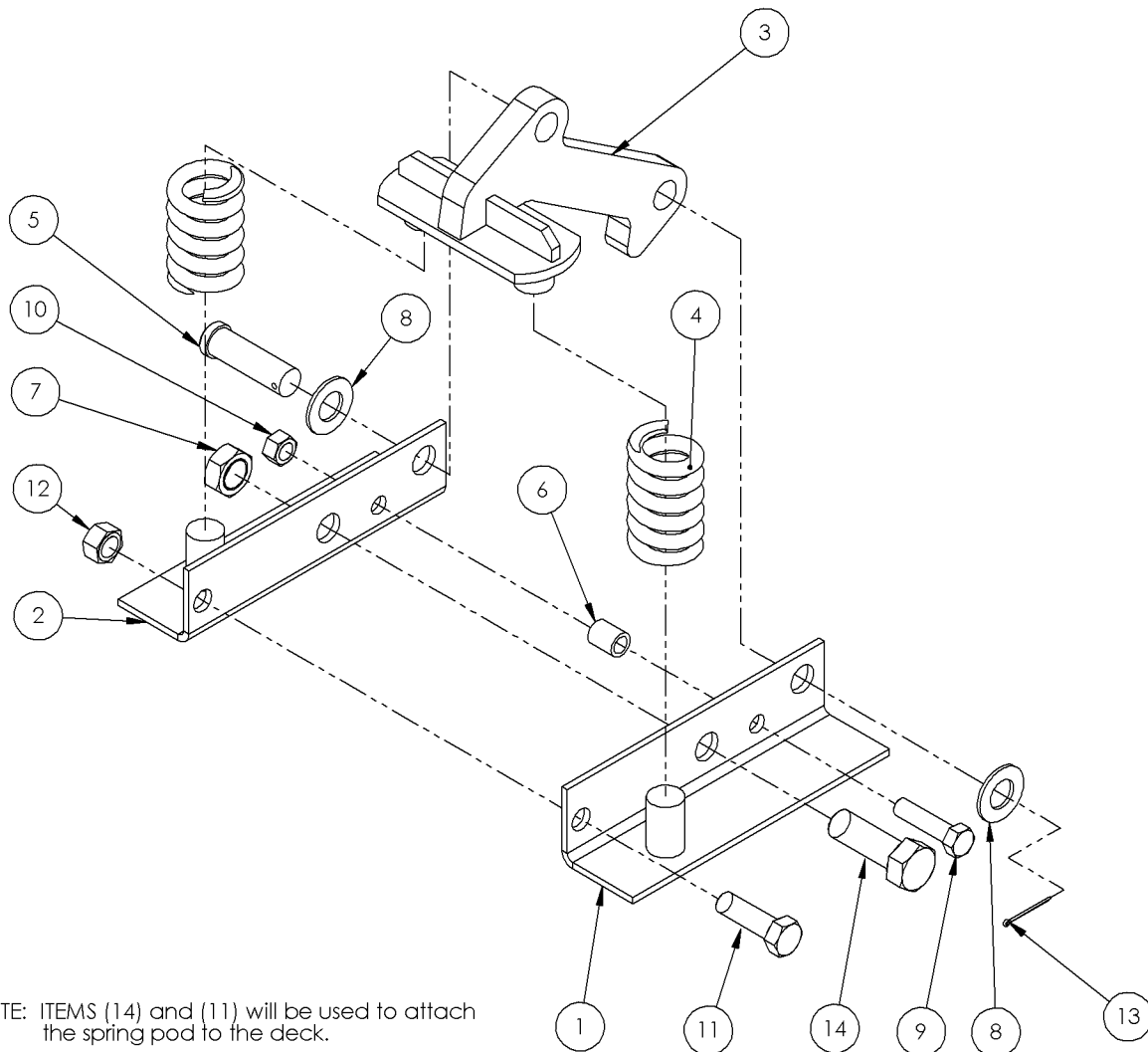
ITEM	PART NO.	QTY.	DESCRIPTION
	00762180	-	DEFLECTOR ASSEMBLY-REAR
1	00762142	2	SHIELD
2	00762144	2	BAR STRAP
3	4526	6	LOCKNUT
4	02030700	6	BOLT

SKID SHOE ASSEMBLY



ITEM	PART NO.	QTY.	DESCRIPTION
1	00776618	2	SKID SHOE
2	2A361612	6	PLOW BOLT
3	00011100	6	FLATWASHER
4	00015800	6	NUT

SPRING POD ASSEMBLY *(OPTIONAL)*



ITEM	PART NO.	QTY.	DESCRIPTION
	00778158	-	SPRING POD ASSEMBLY
1	00778154	1	SPRING POD BASE LH.
2	00778155	1	SPRING POD BASE RH.
3	00759190	1	SPRING SHOCK WELDMENT
4	371063A	2	SPRING
5	8354	1	PIN
6	00761199	1	SPACER TUBE
7	02030300	1	LOCKNUT TLM 1" NC PLB
8	02822500	2	FLAT WASHER 1 PL STD
9	00750952	1	BOLT 5/8 X 2 1/2 NC GR5 PL
10	00695100	1	TOPLOCK NUT, 5/8 NC
11	00037100	1	BOLT 3/4 NC X 2-1/2" PL5
12	00037200	1	LOCKNUT 3/4 NC PLB
13	00606000	1	COTTER PIN 3/16 X 2"
14	7A16824	1	BOLT 1 NC X 3" PL5

SERVIS-RHINO

LIMITED WARRANTY

1. LIMITED WARRANTIES

- 1.01. Servis-Rhino warrants for one year from the purchase date to the original non-commercial, governmental, or municipal purchaser ("Purchaser") and warrants for six months to the original commercial or industrial purchaser ("Purchaser") that the goods purchased are free from defects in material or workmanship.
- 1.02. Manufacturer will replace for the Purchaser any part or parts found, upon examination at one of its factories, to be defective under normal use and service due to defects in material or workmanship.
- 1.03. This limited warranty does not apply to any part of the goods which has been subjected to improper or abnormal use, negligence, alteration, modification, or accident, damaged due to lack of maintenance or use of wrong fuel, oil, or lubricants, or which has served its normal life. This limited warranty does not apply to any part of any internal combustion engine, or expendable items such as blades, shields, guards, or pneumatic tires except as specifically found in your Operator's Manual.
- 1.04. Except as provided herein, no employee, agent, Dealer, or other person is authorized to give any warranties of any nature on behalf of Manufacturer.

2. REMEDIES AND PROCEDURES.

- 2.01. This limited warranty is not effective unless the Purchaser returns the Registration and Warranty Form to Manufacturer within 30 days of purchase.
- 2.02. Purchaser claims must be made in writing to the Authorized Dealer ("Dealer") from whom Purchaser purchased the goods or an approved Authorized Dealer ("Dealer") within 30 days after Purchaser learns of the facts on which the claim is based.
- 2.03. Purchaser is responsible for returning the goods in question to the Dealer.
- 2.04. If after examining the goods and/or parts in question, Manufacturer finds them to be defective under normal use and service due to defects in material or workmanship, Manufacturer will:
 - (a) Repair or replace the defective goods or part(s) or
 - (b) Reimburse Purchaser for the cost of the part(s) and reasonable labor charges (as determined by Manufacturer) if Purchaser paid for the repair and/or replacement prior to the final determination of applicability of the warranty by Manufacturer.The choice of remedy shall belong to Manufacturer.
- 2.05. Purchaser is responsible for any labor charges exceeding a reasonable amount as determined by Manufacturer and for returning the goods to the Dealer, whether or not the claim is approved. Purchaser is responsible for the transportation cost for the goods or part(s) from the Dealer to the designated factory.

3. LIMITATION OF LIABILITY.

- 3.01. MANUFACTURER DISCLAIMS ANY EXPRESS (EXCEPT AS SET FORTH HEREIN) AND IMPLIED WARRANTIES WITH RESPECT TO THE GOODS INCLUDING, BUT NOT LIMITED TO, MERCHANTABILITY AND FITNESS FOR A PARTICULAR PURPOSE.
- 3.02. MANUFACTURER MAKES NO WARRANTY AS TO THE DESIGN, CAPABILITY, CAPACITY, OR SUITABILITY FOR USE OF THE GOODS.
- 3.03. EXCEPT AS PROVIDED HEREIN, MANUFACTURER SHALL HAVE NO LIABILITY OR RESPONSIBILITY TO PURCHASER OR ANY OTHER PERSON OR ENTITY WITH RESPECT TO ANY LIABILITY, LOSS, OR DAMAGE CAUSED OR ALLEGED TO BE CAUSED DIRECTLY OR INDIRECTLY BY THE GOODS INCLUDING, BUT NOT LIMITED TO, ANY INDIRECT, SPECIAL, CONSEQUENTIAL, OR INCIDENTAL DAMAGES RESULTING FROM THE USE OR OPERATION OF THE GOODS OR ANY BREACH OF THIS WARRANTY. NOT WITHSTANDING THE ABOVE LIMITATIONS AND WARRANTIES, MANUFACTURER'S LIABILITY HEREUNDER FOR DAMAGES INCURRED BY PURCHASER OR OTHERS SHALL NOT EXCEED THE PRICE OF THE GOODS.
- 3.04. NO ACTION ARISING OUT OF ANY CLAIMED BREACH OF THIS WARRANTY OR TRANSACTIONS UNDER THIS WARRANTY MAY BE BROUGHT MORE THAN TWO (2) YEARS AFTER THE CAUSE OF ACTION HAS OCCURRED.

4. MISCELLANEOUS.

- 4.01. Proper Venue for any lawsuits arising from or related to this limited warranty shall be only in Guadalupe County, Texas.
- 4.02. Manufacturer may waive compliance with any of the terms of this limited warranty, but no waiver of any terms shall be deemed to be a waiver of any other term.
- 4.03. If any provision of this limited warranty shall violate any applicable law and is held to be unenforceable, then the invalidity of such provision shall not invalidate any other provisions herein.
- 4.04. Applicable law may provide rights and benefits to purchaser in addition to those provided herein.

KEEP FOR YOUR RECORDS

ATTENTION: Purchaser should fill in the blanks below for his reference when buying repair parts and/or for proper machine identification when applying for warranty.

Servis-Rhino Implement Model _____ Serial Number _____

Date Purchased _____ Dealer _____

ATTENTION:
READ YOUR OPERATOR'S MANUAL

RHINO[®]
1020 S. Sangamon Ave.
Gibson City, IL 60936
800-446-5158
Email: parts@servis-rhino.com





TO THE OWNER/OPERATOR/DEALER

To keep your implement running efficiently and safely, read your manual thoroughly and follow these directions and the Safety Messages in this Manual. The Table of Contents clearly identifies each section where you can easily find the information you need.

The OCCUPATIONAL SAFETY AND HEALTH ACT (1928.51 Subpart C) makes these minimum safety requirements of tractor operators:

REQUIRED OF THE OWNER:

1. Provide a Roll-Over-Protective Structure that meets the requirements of this Standard; and
2. Provide Seatbelts that meet the requirements of this paragraph of this Standard and SAE J4C; and
3. Ensure that each employee uses such Seatbelt while the tractor is moving; and
4. Ensure that each employee tightens the Seatbelt sufficiently to confine the employee to the protected area provided by the ROPS.

REQUIRED OF THE OPERATOR

1. Securely fasten seatbelt if the tractor has a ROPS.
2. Where possible, avoid operating the tractor near ditches, embankments, and holes.
3. Reduce speed when turning, crossing slopes, and on rough, slick, or muddy surfaces.
4. Stay off slopes too steep for safe operation.
5. Watch where you are going - especially at row ends, on roads, and around trees.
6. Do not permit others to ride.
7. Operate the tractor smoothly - no jerky turns, starts, or stops.
8. Hitch only to the drawbar and hitch points recommended by the tractor manufacturer.
9. When the tractor is stopped, set brakes securely and use park lock, if available.



Keep children away from danger all day, every day...



Equip tractors with rollover protection (ROPS) and keep all machinery guards in place...



Please work, drive, play and live each day with care and concern for your safety and that of your family and fellow citizens.

